



THE RITZ-CARLTON, DUBAI ROOMS FACT SHEET



THE RITZ-CARLTON

DUBAI

DELUXE ROOM

KING BED



THE RITZ-CARLTON, DUBAI DELUXE ROOM (KING)

50 Square Meters / 538 Square Feet

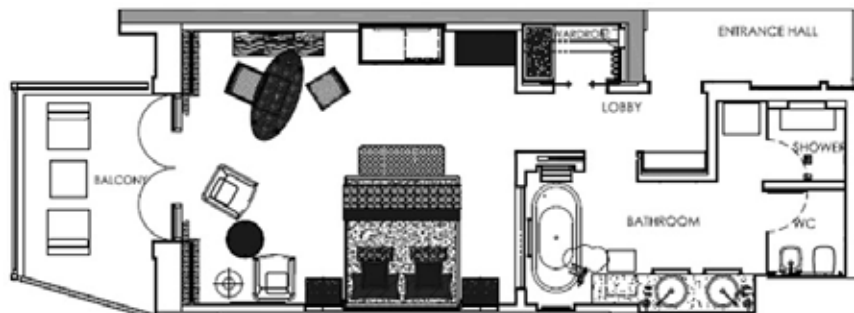
Spacious and beautifully appointed deluxe rooms with their own private balconies or patios.

All rooms are oriented towards the sea and feature the following:

Maximum permitted occupancy: 2 adults + 2 children under 12 years or 1 adult

Possible inter-leading room option available with Deluxe Twin Room

- Luxurious double room with 1 king bed and sitting area
- Private balcony or patio with outside seating
- Ritz-Carlton signature linens and feather-beds
- Spacious walk-in wardrobes
- Marble bath and signature bath essentials
- Separate rain showers
- Double vanities
- Shaving/make-up mirror and hair dryer
- Plush terry robes, towels and slippers
- Laundry and valet services
- Digital room control system
- iPod Docking station
- High-speed wired and wireless Internet access
- Own climate control
- 55" IPTV with a mix of local and international channels
- DVD library for the in-room player
- Honor Bar
- Safety deposit box
- 24-hour in-room dining
- In-room iron and ironing board
- Shoe-shine service
- Beach bag
- Complimentary local newspaper



THE RITZ-CARLTON

DUBAI

AL MAMSHA STREET, JUMEIRAH BEACH RESIDENCES

P.P. BOX 26525, DUBAI, UNITED ARAB EMIRATES +971.4.399.4000 RITZCARLTON.COM/DUBAI

DELUXE ROOM

TWIN BED



THE RITZ-CARLTON, DUBAI DELUXE ROOM (TWIN)

50 Square Meters / 538 Square Feet

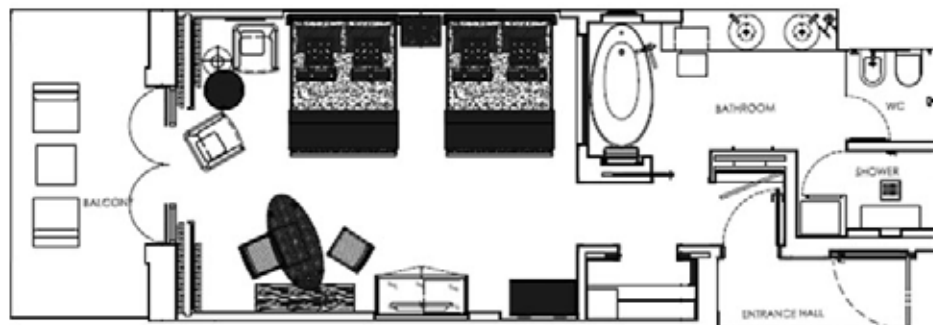
Spacious and beautifully appointed deluxe rooms with their own private balconies or patios.

All rooms are oriented towards the sea and feature the following:

Maximum permitted occupancy: 2 adults + 2 children under 12 years or 1 adult

Possible inter-leading room option available with Deluxe King Rooms and One Bedroom Suite

- Luxurious double room with 2 queen size beds
- and sitting area
- Private balcony or patio with outside seating
- Ritz-Carlton signature linens and feather-beds
- Spacious walk-in wardrobes
- Marble bath and signature bath essentials
- Separate rain showers
- Double vanities
- Shaving/make-up mirror and hair dryer
- Plush terry robes, towels and slippers
- Laundry and valet services
- Digital room control system
- iPod Docking station
- High-speed wired and wireless Internet access
- Own climate control
- 55" IPTV with a mix of local and international channels
- DVD library for the in-room player
- Honor Bar
- Safety deposit box
- 24-hour in-room dining
- In-room iron and ironing board
- Shoe-shine service
- Beach bag
- Complimentary local newspaper



THE RITZ-CARLTON

DUBAI

AL MAMSHA STREET, JUMEIRAH BEACH RESIDENCES

P.P. BOX 26525, DUBAI, UNITED ARAB EMIRATES +971.4.399.4000 RITZCARLTON.COM/DUBAI

OCEAN VIEW DELUXE

KING BED



THE RITZ-CARLTON, DUBAI OCEAN VIEW DELUXE (KING)

(Ghoroub wing) 50 Square Meters / 538 Square Feet

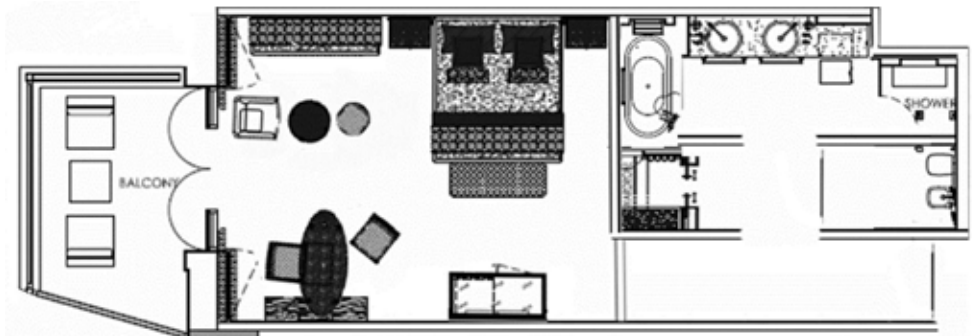
20 spacious and beautifully appointed ocean view rooms with their own private balconies or patios.

All rooms are oriented towards the sea with sea view and feature the following:

Maximum permitted occupancy: 2 adults + 2 children under 12 years or 1 adult

Possible connecting room option available with Ocean View Deluxe Twin

- Luxurious double room with 1 king bed and sitting area
- Private balcony or patio with outside seating
- Ritz-Carlton signature linens and feather-beds
- Spacious walk-in wardrobes
- Marble bath and signature bath essentials
- Separate rain showers
- Double vanities
- Shaving/make-up mirror and hair dryer
- Plush terry robes, towels and slippers
- Laundry and valet services
- Digital room control system
- iPod Docking station
- High-speed wired and wireless Internet access
- Own climate control
- 55" IPTV with a mix of local and international channels
- DVD library for the in-room player
- Honor Bar
- Safety deposit box
- 24-hour in-room dining
- In-room iron and ironing board
- Shoe-shine service
- Beach bag
- Complimentary local newspaper



THE RITZ-CARLTON

DUBAI

AL MAMSHA STREET, JUMEIRAH BEACH RESIDENCES

P.P. BOX 26525, DUBAI, UNITED ARAB EMIRATES +971.4.399.4000 RITZCARLTON.COM/DUBAI

CLUB GARDEN VIEW KING

SHOROQ WING



THE RITZ-CARLTON, DUBAI CLUB GARDEN VIEW KING

(Shoroq wing) 50 Square Meters / 538 Square Feet

13 spacious and beautifully appointed deluxe rooms with their own private balconies or patios.

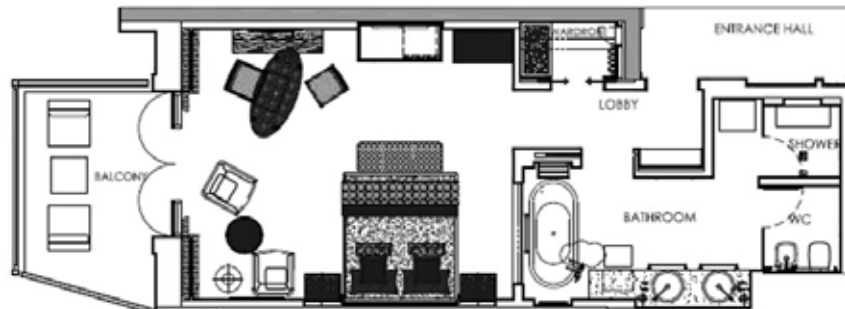
All suites are oriented towards the sea and feature the following:

Maximum permitted occupancy: 2 adults + 2 children under 12 years or 1 adult

Possible inter-leading room option available with Club Garden Twin Room

Exclusive access to The Ritz-Carlton Club® Lounge

- Luxurious double room with 1 king bed and sitting area
- Private balcony or patio with outside seating
- Ritz-Carlton signature linens and featherbeds
- Spacious walk-in wardrobes
- Marble bath and signature bath essentials
- Separate rain showers
- Double vanities
- Shaving/make-up mirror and hair dryer
- Plush terry robes, towels and slippers
- Laundry and valet services
- Digital room control system
- iPod Docking station
- High-speed wired and wireless Internet access
- Own climate control
- 55" IPTV with a mix of local and international channels
- DVD library for the in-room player
- Honor Bar
- Safety deposit box
- 24-hour in-room dining
- In-room iron and ironing board
- Shoe-shine service
- Beach bag
- Complimentary local newspaper



THE RITZ-CARLTON

DUBAI

AL MAMSHA STREET, JUMEIRAH BEACH RESIDENCES

P.P. BOX 26525, DUBAI, UNITED ARAB EMIRATES +971.4.399.4000 RITZCARLTON.COM/DUBAI

CLUB OCEAN VIEW KING

SHOROQQ WING



THE RITZ-CARLTON, DUBAI CLUB OCEAN VIEW KING

(Shoroq wing) 50 Square Meters / 538 Square Feet

38 spacious and beautifully appointed deluxe rooms with their own private balconies or patios.

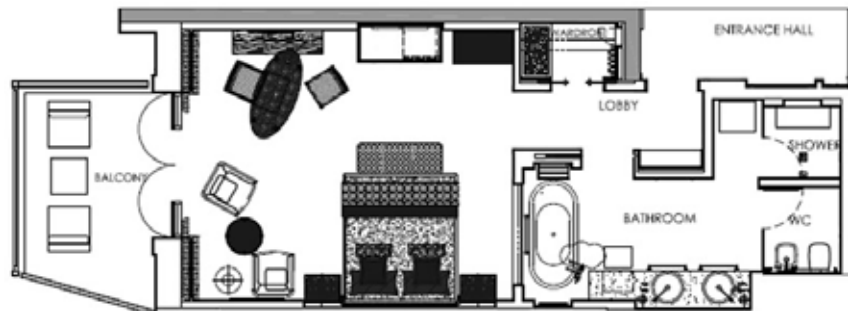
All suites are oriented towards the sea and feature the following:

Maximum permitted occupancy: 2 adults + 2 children under 12 years or 1 adult

Possible inter-leading room option available with Club Ocean Twin Room

Exclusive access to The Ritz-Carlton Club® Lounge

- Luxurious double room with 1 king bed and sitting area
- Private balcony or patio with outside seating
- Ritz-Carlton signature linens and feather-beds
- Spacious walk-in wardrobes
- Marble bath and signature bath essentials
- Separate rain showers
- Double vanities
- Shaving/make-up mirror and hair dryer
- Plush terry robes, towels and slippers
- Laundry and valet services
- Digital room control system
- iPod Docking station
- High-speed wired and wireless Internet access
- Own climate control
- 55" IPTV with a mix of local and international channels
- DVD library for the in-room player
- Honor Bar
- Safety deposit box
- 24-hour in-room dining
- In-room iron and ironing board
- Shoe-shine service
- Beach bag
- Complimentary local newspaper



THE RITZ-CARLTON

DUBAI

AL MAMSHA STREET, JUMEIRAH BEACH RESIDENCES

P.P. BOX 26525, DUBAI, UNITED ARAB EMIRATES +971.4.399.4000 RITZCARLTON.COM/DUBAI

CLUB GARDEN VIEW TWIN

SHOROQ WING



THE RITZ-CARLTON, DUBAI CLUB GARDEN VIEW TWIN

(Shoroq wing) 50 Square Meters / 538 Square Feet

6 spacious and beautifully appointed deluxe rooms with their own private balconies or patios.

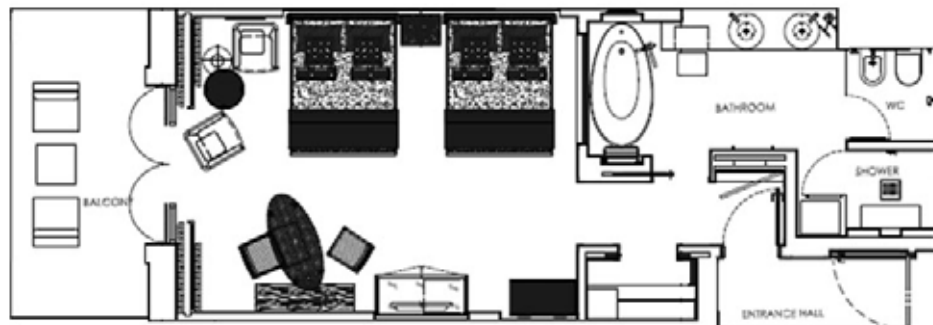
All suites are oriented towards the sea and feature the following:

Maximum permitted occupancy: 2 adults + 2 children under 12 years or 1 adult

Possible inter-leading room option available with Club Garden King Room

Exclusive access to The Ritz-Carlton Club® Lounge

- Luxurious double room with 2 queen size beds and sitting area
- Private balcony or patio with outside seating
- Ritz-Carlton signature linens and featherbeds
- Spacious walk-in wardrobes
- Marble bath and signature bath essentials
- Separate rain showers
- Double vanities
- Shaving/make-up mirror and hair dryer
- Plush terry robes, towels and slippers
- Laundry and valet services
- Digital room control system
- iPod Docking station
- High-speed wired and wireless Internet access
- Own climate control
- 55" IPTV with a mix of local and international channels
- DVD library for the in-room player
- Honor Bar
- Safety deposit box
- 24-hour in-room dining
- In-room iron and ironing board
- Shoe-shine service
- Beach bag
- Complimentary local newspaper



THE RITZ-CARLTON

DUBAI

AL MAMSHA STREET, JUMEIRAH BEACH RESIDENCES

P.P. BOX 26525, DUBAI, UNITED ARAB EMIRATES +971.4.399.4000 RITZCARLTON.COM/DUBAI

CLUB OCEAN VIEW TWIN

SHOROQ WING



THE RITZ-CARLTON, DUBAI CLUB OCEAN VIEW TWIN

(Shoroq wing) 50 Square Meters / 538 Square Feet

18 spacious and beautifully appointed deluxe rooms with their own private balconies or patios.

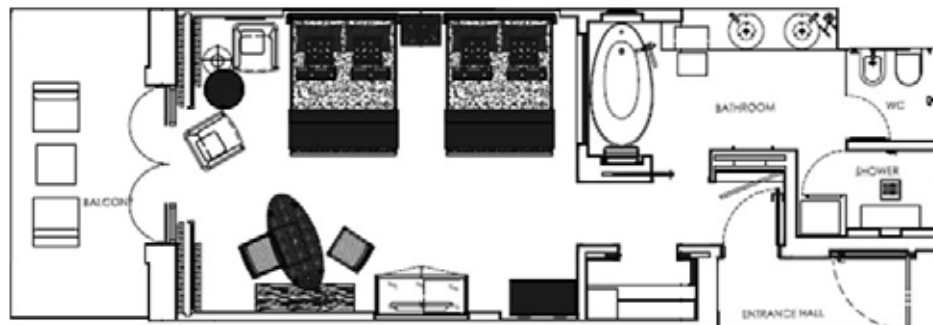
All suites are oriented towards the sea and feature the following:

Maximum permitted occupancy: 2 adults + 2 children under 12 years or 1 adult

Possible inter-leading room option available with Club Ocean King Room

Exclusive access to The Ritz-Carlton Club® Lounge

- Luxurious double room with 2 queen size beds and sitting area
- Private balcony or patio with outside seating
- Ritz-Carlton signature linens and featherbeds
- Spacious walk-in wardrobes
- Marble bath and signature bath essentials
- Separate rain showers
- Double vanities
- Shaving/make-up mirror and hair dryer
- Plush terry robes, towels and slippers
- Laundry and valet services
- Digital room control system
- iPod Docking station
- High-speed wired and wireless Internet access
- Own climate control
- 55" IPTV with a mix of local and international channels
- DVD library for the in-room player
- Honor Bar
- Safety deposit box
- 24-hour in-room dining
- In-room iron and ironing board
- Shoe-shine service
- Beach bag
- Complimentary local newspaper



THE RITZ-CARLTON

DUBAI

AL MAMSHA STREET, JUMEIRAH BEACH RESIDENCES

P.P. BOX 26525, DUBAI, UNITED ARAB EMIRATES +971.4.399.4000 RITZCARLTON.COM/DUBAI

FAMILY ROOM

TWO BEDROOM



THE RITZ-CARLTON, DUBAI FAMILY ROOM (TWO BEDROOM)

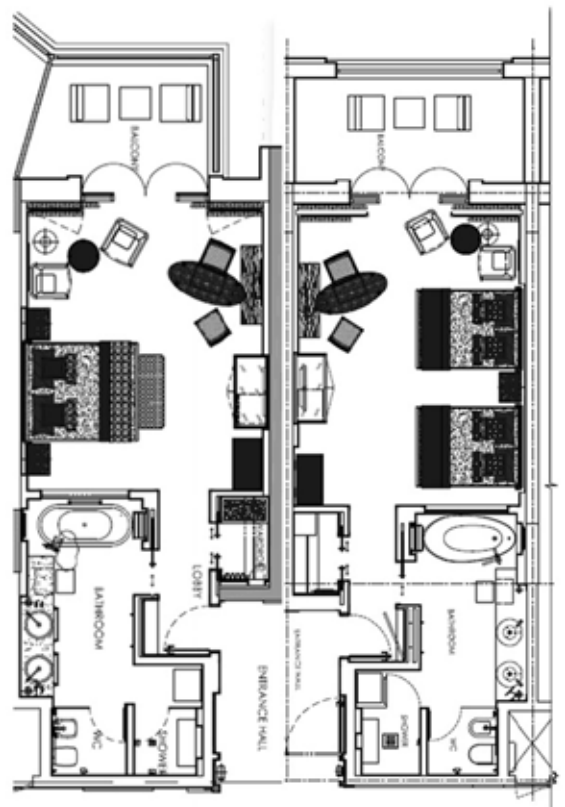
100 Square Meters / 1076 Square Feet

10 strategically appointed Family Rooms

A spacious room of 100 sqm, featuring a king and a twin bedroom with two bathrooms and private balconies offering spectacular views over the resort's manicured gardens.

Maximum permitted occupancy: 6 people with a maximum of 5 adults

- Two-bedroom with king and twin size beds
- Private balcony or patio with outside seating
- 55" IPTVs showing a mix of local and international channels both in the main room and living room
- Spacious walk-in wardrobes
- Ritz-Carlton signature linens and featherbeds
- Marble bath and signature bath essentials
- Separate rain showers
- Double vanities
- Shaving/make-up mirror and hair dryer
- Digital room control system
- Plush terry robes, towels and slippers
- High-speed wired and wireless Internet access
- Own climate control
- DVD library for the in-room player
- Honor bar
- Coffee machine and tea set-up
- 24-hour in-room dining
- In-room iron and ironing board
- Shoe-shine service
- Beach bag
- Laundry and valet services
- Complimentary local newspaper
- iPod docking station



THE RITZ-CARLTON

DUBAI

AL MAMSHA STREET, JUMEIRAH BEACH RESIDENCES

P.P. BOX 26525, DUBAI, UNITED ARAB EMIRATES +971.4.399.4000 RITZCARLTON.COM/DUBAI



THE RITZ-CARLTON, DUBAI CLUB LOUNGE BENEFITS



THE RITZ-CARLTON

DUBAI

THE RITZ-CARLTON

CLUB LEVEL



THE RITZ-CARLTON CLUB LEVEL

For added value luxury, The Ritz-Carlton Club®, located on Level 3 with breath-taking sea views, offers an extra degree of privacy and pampering with a private lounge, light dining and beverages served throughout the day. A dedicated club concierge and complimentary wireless Internet access makes any leisure or business trip a pleasure.

- Exclusive Club Level access with a personal Concierge
- Restaurant reservations and business-related support
- Complimentary Wi-Fi Internet in the Club Lounge
- Full American breakfast and 5 food presentations during the day
- Premium selection of wines, beer and spirits
- Complimentary pressing (2 items per day / per room)

Breakfast	7 am to 11 am
Mid-day snacks	12 pm - 2 pm
Afternoon tea	3 pm - 4.30 pm
Dinner	5.30 pm - 7.30 pm
Chocolates and Digestives	8.15 pm - 10 pm

Please note:

Children under the age of 12 must be accompanied by an adult at all times; no children under the age of 12 are permitted after 7:30 p.m.



THE RITZ-CARLTON
DUBAI

AL MAMSHA STREET, JUMEIRAH BEACH RESIDENCES
P.P. BOX 26525, DUBAI, UNITED ARAB EMIRATES +971.4.399.4000 RITZCARLTON.COM/DUBAI



THE RITZ-CARLTON, DUBAI SUITES



THE RITZ-CARLTON

DUBAI

ONE BEDROOM SUITE



THE RITZ-CARLTON, DUBAI ONE BEDROOM SUITE

(Shorooq wing) 90 Square Meters / 968 Square Feet

7 spacious and signature shaped Junior Suites are the resort's newest room category.

All rooms are oriented towards the sea and feature the following:

Maximum permitted occupancy: 2 Adults + 2 Children under 12 years or 1 extra Adult
Possible inter-leading room option available with Deluxe Rooms

- Luxurious double room with king size bed
- Spacious living room separated from the main room
- Adjoining guestroom can create two-bedroom suite
- Private balcony or patio with outside seating and sun lounge
- Ritz-Carlton signature linens and featherbeds
- Spacious walk-in wardrobes
- Marble bath and signature bath essentials
- Separate oversized rain showers
- Double vanities
- Shaving/make-up mirror and hair dryer
- Digital room control system
- Plush terry robes, towels and slippers
- High-speed wired and wireless Internet access
- Own climate control
- 65" IPTVs showing a mix of local and international channels both in the main room and living room
- DVD library for the in-room player
- Honor bar
- Coffee machine and tea set-up
- 24-hour in-room dining
- In-room iron and ironing board
- Shoe-shine service
- Beach bag
- Laundry and valet services
- Complimentary local newspaper



THE RITZ-CARLTON

DUBAI

AL MAMSHA STREET, JUMEIRAH BEACH RESIDENCES

P.P. BOX 26525, DUBAI, UNITED ARAB EMIRATES +971.4.399.4000 RITZCARLTON.COM/DUBAI

ONE BEDROOM CLUB SUITE



THE RITZ-CARLTON, DUBAI ONE BEDROOM CLUB SUITE

(Shorooq wing) 90 Square Meters / 968 Square Feet

6 spacious and signature shaped One Bedroom Club Suite are the resort's newest room category.

All rooms are oriented towards the sea and feature the following:

Maximum permitted occupancy: 2 Adults + 2 Children under 12 years or 1 extra Adult

Possible inter-leading room option available with Club Deluxe Rooms

Exclusive Access to The Ritz-Carlton Club® Lounge

- Luxurious double room with king size bed
- Spacious living room separated from the main room
- Adjoining guestroom can create two-bedroom suite
- Private balcony or patio with outside seating and sun lounge
- Ritz-Carlton signature linens and feather-beds
- Spacious walk-in wardrobes
- Marble bath and signature bath essentials
- Separate oversized rain showers
- Double vanities
- Shaving/make-up mirror and hair dryer
- Digital room control system
- Plush terry robes, towels and slippers
- High-speed wired and wireless Internet access
- Own climate control
- 65" IPTVs showing a mix of local and international channels both in the main room and living room
- DVD library for the in-room player
- Honor bar
- Coffee machine and tea set-up
- 24-hour in-room dining
- In-room iron and ironing board
- Shoe-shine service
- Beach bag
- Laundry and valet services
- Complimentary local newspaper
- iPod docking station



THE RITZ-CARLTON

DUBAI

AL MAMSHA STREET, JUMEIRAH BEACH RESIDENCES

P.P. BOX 26525, DUBAI, UNITED ARAB EMIRATES +971.4.399.4000 RITZCARLTON.COM/DUBAI

ONE BEDROOM GULF SUITE



THE RITZ-CARLTON, DUBAI ONE BEDROOM GULF SUITE

108 Square Meters / 1162 Square Feet

5 strategically appointed One Bedroom Gulf Suite characterized with its real sense of space.

All suites are oriented towards the sea and feature the following:

Maximum permitted occupancy: 2 adults + 2 children under 12 years or 1 extra Adult

Possible inter-leading room option available with Deluxe Room and One Bedroom Gulf Suite

- Luxurious double room with king size bed
- Spacious living room separated from the main room
- Adjoining room can create two-bedroom suite
- Private balcony or patio with outside seating and sun lounge
- 65" IPTVs showing a mix of local and international channels both in the main room and living room
- Spacious walk-in wardrobes
- Ritz-Carlton signature linens and featherbeds
- Marble bath and signature bath essentials
- Separate oversized rain showers
- Double vanities
- Shaving/make-up mirror and hair dryer
- Digital room control system
- Plush terry robes, towels and slippers
- High-speed wired and wireless Internet access
- Own climate control
- DVD library for the in-room player
- Honor bar
- Coffee machine and tea set-up
- 24-hour in-room dining
- In-room iron and ironing board
- Shoe-shine service
- Beach bag
- Laundry and valet services
- Complimentary local newspaper
- iPod docking station



THE RITZ-CARLTON

DUBAI

AL MAMSHA STREET, JUMEIRAH BEACH RESIDENCES

P.P. BOX 26525, DUBAI, UNITED ARAB EMIRATES +971.4.399.4000 RITZCARLTON.COM/DUBAI

ONE BEDROOM OCEAN CLUB SUITE



THE RITZ-CARLTON, DUBAI ONE BEDROOM OCEAN CLUB SUITE

(Shorooq wing) 108 square meters - 1162 square feet

8 strategically appointed One Bedroom Ocean Club Suite characterized with its real sense of space.

All suites are oriented towards the sea and feature the following:

Maximum permitted occupancy: 2 adults + 2 children under 12 years or 1 extra adult

Possible inter-leading room option available with One Bedroom Ocean Club Suite

Exclusive access to The Ritz-Carlton Club® Lounge

- Plush terry robes, towels and slippers
- High-speed wired and wireless Internet access
- Own climate control
- 65" IPTVs showing a mix of local and international channels both in the main room and living room
- DVD library for the in-room player
- Honor bar
- Coffee machine and tea set-up
- 24-hour in-room dining
- In-room iron and ironing board
- Shoe-shine service
- Beach bag
- Laundry and valet services
- Complimentary local newspaper
- iPod docking station
- Luxurious double room with king size bed
- Spacious living room separated from the main room
- Adjoining suite can create two-bedroom suite
- Private balcony or patio with outside seating and sun lounge
- Ritz-Carlton signature linens and featherbeds
- Spacious walk-in wardrobes
- Marble bath and signature bath essentials
- Separate oversized rain showers
- Double vanities
- Shaving/make-up mirror and hair dryer
- Digital room control system



THE RITZ-CARLTON

DUBAI

AL MAMSHA STREET, JUMEIRAH BEACH RESIDENCES

P.P. BOX 26525, DUBAI, UNITED ARAB EMIRATES +971.4.399.4000 RITZCARLTON.COM/DUBAI

FAMILY SUITE

TWO BEDROOM



THE RITZ-CARLTON, DUBAI FAMILY SUITE (TWO BEDROOM)

158 Square Meters / 1700 Square Feet

5 strategically appointed Family Suites

A spacious suite of 158 sqm, featuring a king and a twin bedroom with two bathrooms, a beautifully appointed living room and private balconies offering spectacular views over the resort's manicured gardens.

Maximum permitted occupancy: 6 people with a maximum of 5 adults

- Two-bedroom suite with king and twin size beds
- Spacious living room separated from the main room
- Private balcony or patio with outside seating and lounge
- 65" IPTVs showing a mix of local and international channels both in the main room and living room
- Spacious walk-in wardrobes
- Ritz-Carlton signature linens and featherbeds
- Marble bath and signature bath essentials
- Separate oversized rain showers
- Double vanities
- Shaving/make-up mirror and hair dryer
- Digital room control system
- Plush terry robes, towels and slippers
- High-speed wired and wireless Internet access
- Own climate control
- DVD library for the in-room player
- Honor bar
- Coffee machine and tea set-up
- 24-hour in-room dining
- In-room iron and ironing board
- Shoe-shine service
- Beach bag
- Laundry and valet services
- Complimentary local newspaper
- iPod docking station



THE RITZ-CARLTON

DUBAI

AL MAMSHA STREET, JUMEIRAH BEACH RESIDENCES

P.P. BOX 26525, DUBAI, UNITED ARAB EMIRATES +971.4.399.4000 RITZCARLTON.COM/DUBAI



THE RITZ-CARLTON, DUBAI PREMIUM SUITES



THE RITZ-CARLTON

DUBAI

THE EMIRATES SUITE

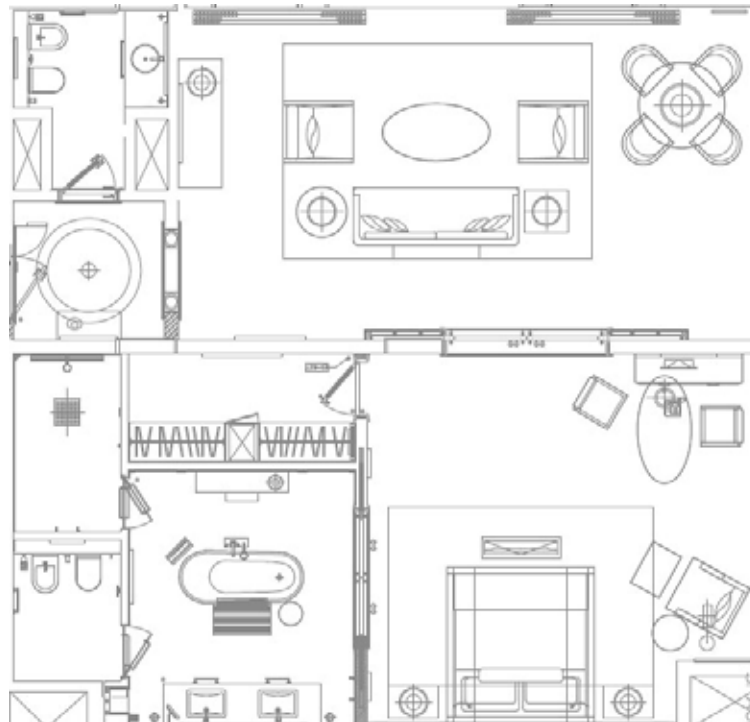


THE RITZ-CARLTON, DUBAI - THE EMIRATES SUITE

*(Ghorroob Wing) 201 Square Meters / 2153 Square Feet
1 Bedroom Suite*

A beautifully appointed Emirates Suite offers breathtaking views of the Arabian Gulf. Located on the fourth floor, it features an oversized 75 m2 private terrace offering the perfect setting to spend time under the Arabian skies in complete exclusivity. The suite extends warm colours of beige and turquoise blended harmoniously with dark woods. While the chic bedroom directly connected to a stylish bathroom is complete with a mesmerizing rain shower and an oversized bathtub.

Maximum permitted occupancy: 2 adults + 2 children under 12 years or 1 extra adult
Exclusive access to The Ritz-Carlton Club® Lounge



THE RITZ-CARLTON
DUBAI

AL MAMSHA STREET, JUMEIRAH BEACH RESIDENCES
P.P. BOX 26525, DUBAI, UNITED ARAB EMIRATES +971.4.399.4000 RITZCARLTON.COM/DUBAI

THE PRESIDENTIAL SUITE



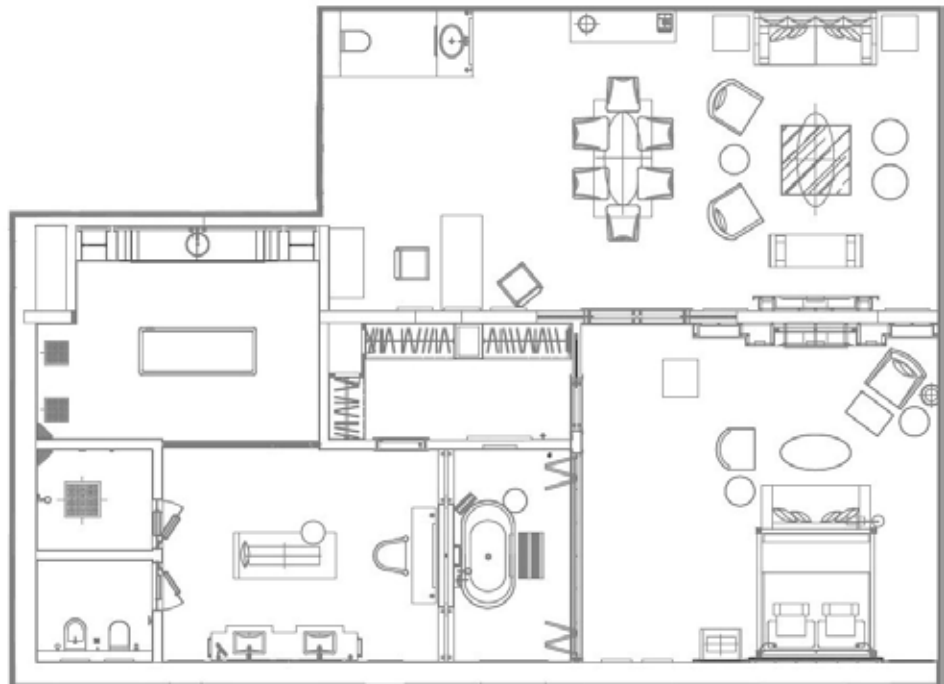
THE RITZ-CARLTON, DUBAI - THE PRESIDENTIAL SUITE

240 Square Meters / 2583 Square Feet

2 Bedroom Suite

2 beautifully appointed Presidential Suites, located on the fifth and sixth floors of the resort's newly restored "Ghoroob" wing, offer breathtaking views of the Arabian Gulf. The Presidential Suites' stand-out feature is a dedicated "Hamman" and steam room, enabling guests to experience a superior wellness and spa journey within the comfort of their own Ritz-Carlton abode.

Maximum permitted occupancy: 6 people with a maximum of 5 adults
Exclusive access to The Ritz-Carlton Club® Lounge



THE RITZ-CARLTON

DUBAI

AL MAMSHA STREET, JUMEIRAH BEACH RESIDENCES

P.P. BOX 26525, DUBAI, UNITED ARAB EMIRATES +971.4.399.4000 RITZCARLTON.COM/DUBAI

THE ROYAL SUITE



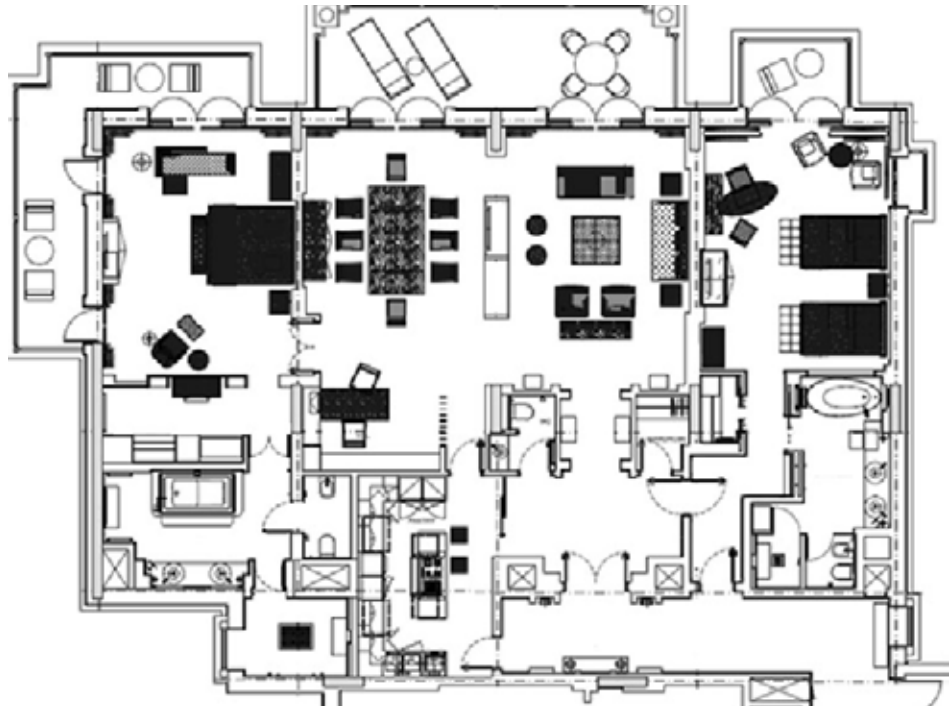
THE RITZ-CARLTON, DUBAI - THE ROYAL SUITE

308 Square Meters / 3315 Square Feet

2 Bedroom Suite

2 beautifully appointed Royal Suites offer breathtaking views of the Arabian Gulf. Located on the highest floor, these magnificent suites feature spacious dressing area with built-in wardrobe leading to an even more spacious marble bathroom with Jacuzzi. The Ritz-Carlton Suite provides a beautifully furnished lounge and dining area plus equipped kitchen.

Maximum permitted occupancy: 6 people with a maximum of 5 adults
Exclusive access to The Ritz-Carlton Club® Lounge



THE RITZ-CARLTON

DUBAI

AL MAMSHA STREET, JUMEIRAH BEACH RESIDENCES

P.P. BOX 26525, DUBAI, UNITED ARAB EMIRATES +971.4.399.4000 RITZCARLTON.COM/DUBAI