

NOVOTEL

PHUKET CITY PHOKEETHRA





THE BEST 5-STAR PHUKET TOWN HOTEL

Spread over 18 floors, each of Novotel Phuket City Phokeethra's 180 rooms and suites offer either impressive city, mountain, or bay views and blend modern décor and Thai accents with luxurious comfort and intuitive service. Guests are welcomed in the grand naturally-lit lobby before being escorted to their accommodation. The spacious and modular rooms, some with balconies, indulge with the signature LIVE N DREAM bed design, premium bathroom amenities, a large rain shower, LCD TV, Minibar and complimentary Wi-Fi. For wellness, fitness and relaxation, the hotel has a spa, 24-hour gym and an intimate covered pool. In Addition To offer guests a sustainable travel experience, the Novotel Phuket City Phokeethra is a plastic-free hotel.

[MORE INFO](#) ▶





PHUKET TOWN AREA

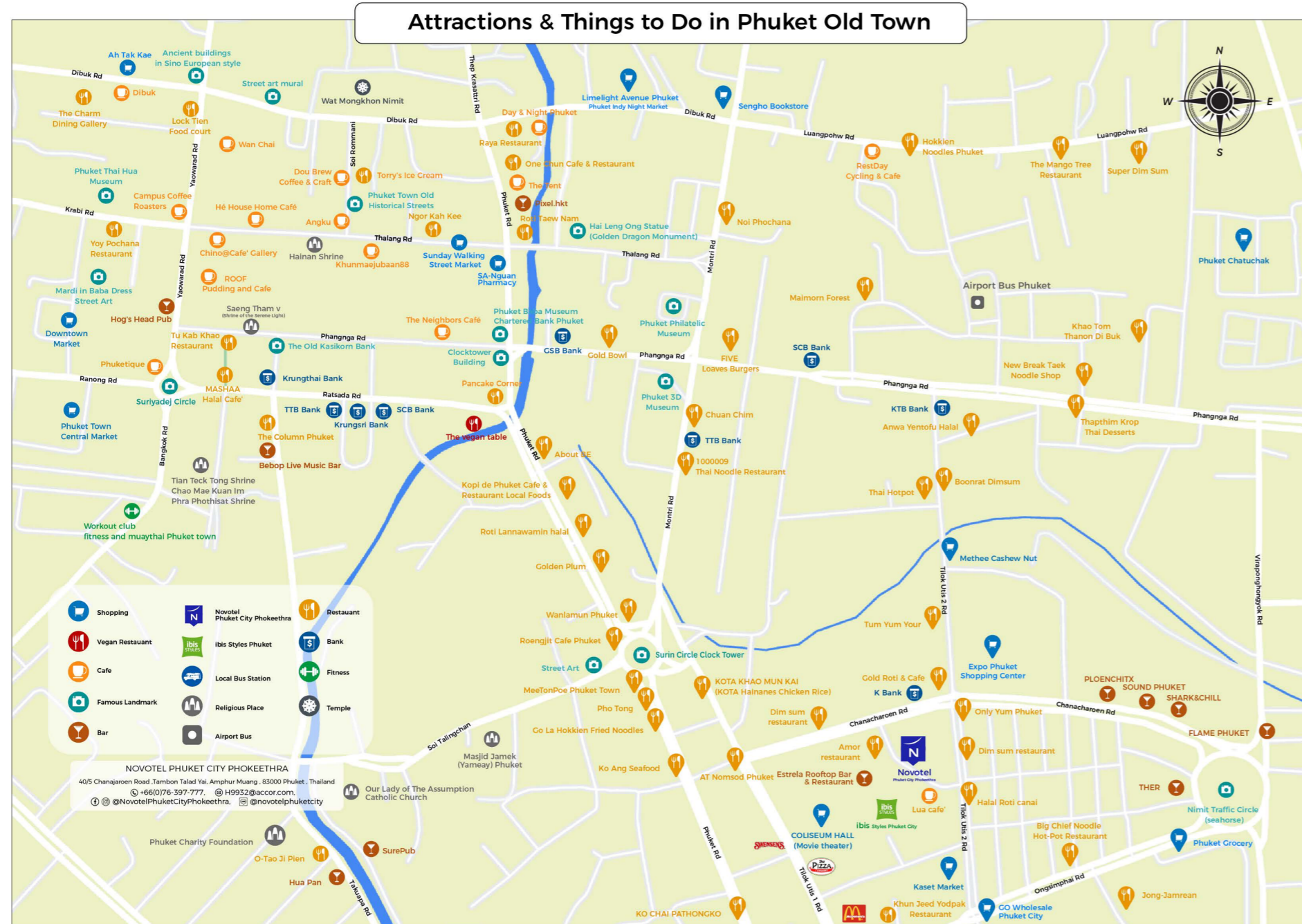
For those who don't know, Phuket Old Town, a stunning blend of Sino-colonial heritage, culture and architecture, is where it all began. For centuries the island's strategic location to the south of Thailand made it an important port of call on the trading routes between India and East Asia.

Phuket Old Town Night Market on Sunday Sino Phuket
Thalang Road

The Phuket Town has undergone a renaissance to restore its old world charm. The century-old shophouses that line many of the streets have been refurbished and repurposed as boutique guesthouses, artisan coffee shops, tiny art galleries showcasing local talent, craft refreshment bars with live music, and restaurants that celebrate the true.

A local initiative also turned the town into an open-air gallery for giant murals, with local artists and some of the country's most famous street artists adding a dash of colour to street corners, restaurant walls and shop facades.

Street art Phuket 1 Street art Phuket 2 Street art Phuket 3
Blending contemporary design, luxurious comfort and Thai charm, the Novotel Phuket City Phokeethra offers intrepid travelers the opportunity to experience the real Phuket City, one beyond the beaches. Designated a "City of Gastronomy" by UNESCO, foodies can enjoy delicious street food authentic Phuket, Hokkien and Thai cuisine at the local market next door to the hotel.



THE PERFECT LOCATION FOR EXPLORING PHUKET

Novotel Phuket City Phokeethra is perfectly located with only a 40-minute drive to Phuket International Airport. We are a mere 5 minutes' walk to all the sights and shopping of Phuket Town and less than 20 minutes from the shopping malls. A 10-minute trip by car takes you to Rassada Pier, the jump-off for exploring the beautiful islands and beaches of the area.

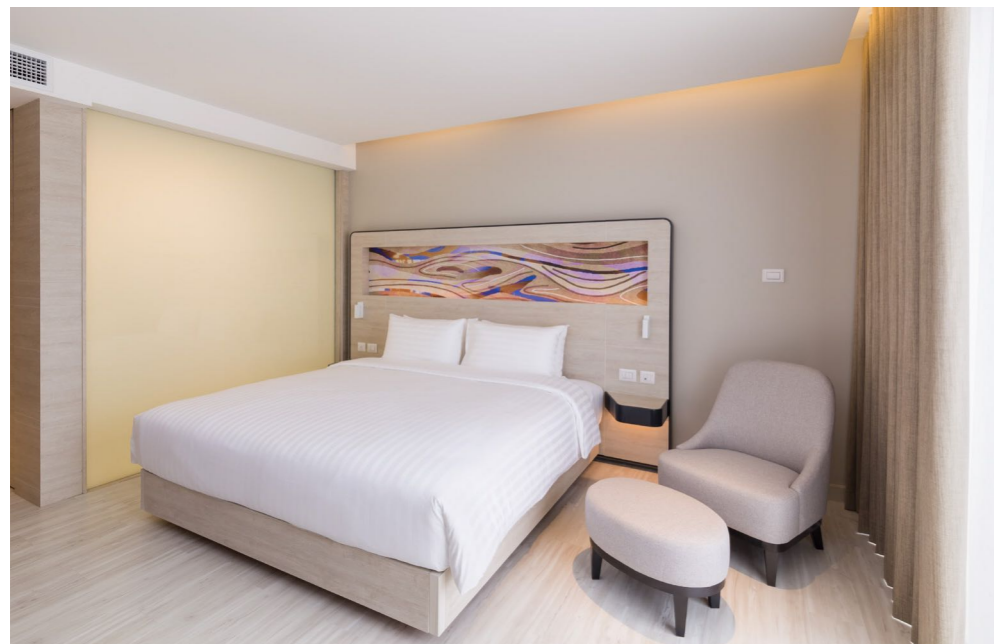
[MORE INFO](#) ▶



GUEST ROOM

Spacious, comfortable and modular, the 180 rooms and suites, some which include private balconies, boast stunning views of the surrounding city, mountains and the bay. The chic East-meets-West interiors complemented by delicate earth tones and hardwood floors are carefully designed to uplift the mood and emotions of the guests. All the five guestroom categories – Superior Room, Executive Room, Junior Suite, Executive Suite, and Presidential Suite – feature the signature LIVE N DREAM bed. Additional room facilities include a large rain shower, premium bathroom amenities, a pillow menu, LCD TV, mini bar, children's cots, clothes rack, 24-hour room service, and free Wi-Fi connectivity. All accommodation in the hotel are non-smoking.





SUPERIOR ROOM

Spacious and stylish, the Superior Rooms are 30 square meters. All feature contemporary décor, double or twin beds dressed with crisp cotton bedding, premium bathroom amenities, shower facilities, a flat-screen TV with satellite channels, and other thoughtful extras for a comfortable stay. The large window allows natural daylight and beautiful views to complement the room's cozy ambiance.

[MORE INFO](#) ▶





DELUXE ROOM WITH BALCONY

Experience a perfect blend of space and style in our Deluxe Rooms, which are 38 square meters. Each room features a private balcony, contemporary décor, and your choice of double or twin beds dressed in crisp cotton bedding. Enjoy premium bathroom amenities and shower facilities, as well as a flat-screen TV with satellite channels. Thoughtful extras ensure a comfortable stay, while large windows let in natural daylight and offer beautiful views to enhance the room's cozy ambiance.

The private balcony is the perfect spot to unwind, allowing you to take in the serene city view of Phuket. Open the doors and let the refreshing breeze in, creating a peaceful retreat amidst the vibrant city.

[MORE INFO](#) ▶





2-BEDROOM DELUXE WITH BALCONY

Relax and unwind in our spacious and stylish 2-Bedroom Deluxe Room, perfect for family travel or a getaway with friends. Covering 60 square meters, these connecting rooms feature two bedrooms and two bathrooms, offering ample space and privacy for everyone. Enjoy the contemporary décor and the comfort of double or twin beds with crisp cotton bedding.

Step out onto your private balcony and take in the beautiful views, or let the natural daylight stream in through large windows, enhancing the room's cozy ambiance. Each room is equipped with a flat-screen TV with satellite channels, premium bathroom amenities, and shower facilities. Thoughtful extras ensure a comfortable and memorable stay.

[MORE INFO ▶](#)





EXECUTIVE ROOM

The 32-40-sqm Executive Rooms offer more space and flexibility combined with modern comforts and convenience. Each one of feature double or twin beds dressed with crisp cotton bedding, ergonomic work space premium bathroom amenities, shower facilities, a flat screen TV with satellite channels, and other thoughtful extras for comfort and convenience. The large window allows natural daylight and beautiful views of the city.

[MORE INFO ►](#)





JUNIOR SUITE

Enhanced by views of Phuket Town, the bay and the mountains, the contemporary 50-55 sqm Junior Suites includes a living area for relaxation, a king-size bed for a restful night's sleep, and a spacious bathroom with premium amenities and shower facilities. Complimentary Wi-Fi allows you to stay connected and work with ease.

[MORE INFO ▶](#)





EXECUTIVE SUITE

Designed for comfort, the generously sized Executive Suite on the Premier Floor offers 78-83 square metres of contemporary living space, a large bathroom with both a bathtub and rain shower, premium amenities, and complimentary Wi-Fi. The modern ambience is complemented by natural daylight and stunning views of over Phuket Old Town from the large picture window.

[MORE INFO ►](#)





FAMILY ROOM

Perfect for families, our 40 square meters. The family room provides ample space and modern comforts. Enjoy a restful sleep on double or twin beds with crisp cotton bedding, while the kids have fun with their own bunk bed. The room also features an ergonomic workspace, premium bathroom amenities, shower facilities, and a flat-screen TV with satellite channels. Thoughtful extras ensure your comfort and convenience. Natural daylight and beautiful city views stream through the large windows, creating a bright and welcoming atmosphere.

[MORE INFO](#) ▶





PRESIDENTIAL SUITE

Evoking a more gracious era, the luxurious 154-sqm Presidential Suite is the perfect retreat for honeymooning couples or families. It indulges guests with a separate living room with a workspace, dining area, a large bedroom with a king-size bed, a bathroom with a lavish marble bathtub and separate rain shower. The well-appointed space is also accentuated by high ceilings, warm hardwood floors, beautiful Phuketian and Thai artefacts, and a mix of colonial style furniture and modern amenities. The large private balcony, overlooking the hotel's lush tropical garden, offers fantastic views of Phuket Town, the bay and the mountains.

[MORE INFO](#) ▶





RESTAURANT & BARS

Living up to its title of UNESCO “City of Gastronomy”, Phuket Town entices with a world of cuisines and flavours. From authentic Thai, the freshest seafood, and an amazing variety of street fare to cuisines from around the world, the historic town does not disappoint. While its central location makes Novotel Phuket City Phokeethra the perfect base to explore the vibrant dining scene, the exceptional food and beverage offerings at the hotel also cater to all palates.

Start your culinary journey at the all-day dining restaurant Amor serving delicious local and international cuisines. Old World Hemingway glamour meets contemporary comfort at Estrela Rooftop Bar & Restaurant with its panoramic view of the town is perfect for pre- or post-dinner drinks. Lua, the contemporary lobby lounge is a stylish venue for afternoon tea, a casual business meeting or to catch up with friends over a refreshment.

[MORE INFO](#) ▶



Amor

AMOR RESTAURANT

A sophisticated counterpoint to the abundant street fare available just outside the hotel, Amor elevates all-day dining to a new level. Authentic Phuket, Hokkien and Thai dishes with international favourites made from premium ingredients feature on its menu. The buffet selection includes a wide variety of soups, salads, hot and cold dishes, desserts and live cooking stations, while the a la carte menu offers creative dishes prepared a la minute.

- Location : Lobby Floor
- Operating Hours : Everyday. 06:30 hrs. – 22:00 hrs.
- Breakfast : Everyday. 06:30 hrs. – 10:30 hrs.

[MORE INFO ▶](#)



Lua

LUA LOBBY BAR

Located in the grand lobby, the stylish contemporary Lua Lobby Bar with comfortable seating creates a warm, friendly atmosphere. This lively and relaxed social hub is the perfect place to begin your stay in Phuket Town, enjoy refreshments before a night on the town with friends, or even arrange a casual business meeting. Enjoy the menu of creative appetisers, tasty savoury snacks, organic salads, and a range of ice cream flavours, or stop by for afternoon tea with delectable French pastries, and authentic Phuket desserts.

- Location : Lobby Floor
- Operating Hours : Everyday : 10:00 hrs. – 18:00 hrs.

[MORE INFO ▶](#)

ESTRELA

Estrela Rooftop Bar & Restaurant

The best viewpoint location to watch the sunset, Phuket Town's first-ever sky lounge offers breathtaking views complemented by an Old World setting on the 17th floor of the hotel. The Estrela Rooftop Bar & Restaurant is the best venue in Phuket Old Town to entertain business clients, plan a romantic evening, or simply unwind with friends. Sip on classic or signature drinks and mocktails expertly mixed by our talented bartenders. Open seven days a week, it also serves a wide selection of fusion tapas, beverages, and soft drinks brewed in Phuket.

- Location : 17th Floor
- Operating Hours : Everyday, 16:30 hrs. – 00:00 hrs.
- A La Carte Menu : Everyday, 16:30 hrs. – 23:00 hrs.

[MORE INFO ▶](#)





DINE IN THE SKY

Feel the love and embrace a night of truly romantic bliss. Indulge your loved one in a memorable 4-course dinner with breathtaking views surrounding Phuket City at Estrela Rooftop Bar & Restaurant.

*Limited for 10 couples per day

[MORE INFO](#) ▶





ROOM SERVICE

Indulge your taste buds with a wide variety of local specialties, a selection of Hokkien dishes, Thai cuisine, international favorites, French pastries and local Phuket desserts in the privacy of your room. A room service menu is available in every room. Contact Reception, Room Service, and the restaurant and bars via the speed dial buttons on your telephone. For all other services or inquiries, please dial "0" for assistance.

- Operation : 24hrs

[MORE INFO](#) ▶





IN BALANCE FITNESS & SWIMMING POOL

Novotel Phuket City Phokeethra offers an extensive range of services and amenities designed to meet your every need. Be it for business or for leisure, our professional heartist team members will strive to make your stay an enjoyable one.

- Location : 3rd floor
- Open : In Balance Fitness - Everyday 24 hrs.
: Swimming Pool - Everyday 08.00hrs. - 19.00hrs.

[MORE INFO ▶](#)





InBalance Spa by NOVOTEL – Leticia THE BEST MASSAGE IN PHUKET OLD TOWN

THE BEST MASSAGE IN PHUKET OLD TOWN
InBalance Spa by NOVOTEL – Leticia: Take some time off to relax, rejuvenate and reconnect body, mind, and soul at this urban wellness sanctuary with private rooms. Restore a sense of harmony in your life with our personalized service and an extensive menu of holistic body treatments, traditional massages, and beauty treatments provided by professionally trained therapists using premium quality products. Services available are provided upon request.

- Location : 3rd Floor
- Open : 12.00 hrs - 22.00 hrs

[MORE INFO ►](#)





WEDDING AND MEETING

From board rooms to banquet halls to offering the largest ballroom in town, Novotel Phuket City Phokeethra, located in the centre of historic Phuket, is the best place for your next event. State-of-the-art, high-tech options and great service in a world-class destination makes us one of the most sought-after venues for meetings, incentives, conferences, events and weddings.

[MORE INFO ▶](#)



A PERFECT PLACE FOR YOUR WEDDING IN PHUKET

Let us make your most precious wedding dreams come true at Novotel Phuket City Phokeethra. Our elegant event spaces are ideal for saying “I do” and celebrating the sweet occasion with family and friends. For large gatherings, our impressive Grande Ballroom is the largest in town, with two giant LED screens, and can accommodate up to 850 guests, while a flexible range of smaller spaces is also available. All our venues offer a convenient pre-function area, bathrooms, and high-tech audiovisual equipment. The rooftop Estrela Rooftop Bar & Restaurant on the 17th floor is excellent for an after-party celebra-tion. You can find more information about wedding packages here.

[MORE INFO](#) ▶



BEST MEETING ROOMS IN PHUKET TOWN

Our impressive 936 sq m pillarless Grand Ballroom is adjacent to the hotel, with 4.7 m high vaulted ceilings and LED displays, and complemented by an expansive foyer that overlooks a lush tropical garden. It can be partitioned into two smaller ballrooms with large LED screens. Within the hotel, four separate meeting rooms, from large to small, offer a flexible arrangement with pre-function areas. The hotel provides covered parking for up to 140 cars.

Our professional team of meeting planners will ensure the success of your event with customized solutions to fit your needs. They will take care of all the details – from organising high-tech equipment, catering to the smooth transfer of your delegates, and preparing everything you need.

[MORE INFO](#) ▶



NOVOTEL

PHUKET CITY PHOKEETHRA

40/5 Chanajaroen Road , Tambon Talad Yai, Amphur Muang , 83000 Phuket , Thailand
Phone: +66 (0) 76 39 77 77 - Fax: +66 (0) 76 39 77 00

www.novotel-phuket-phokeethra.com