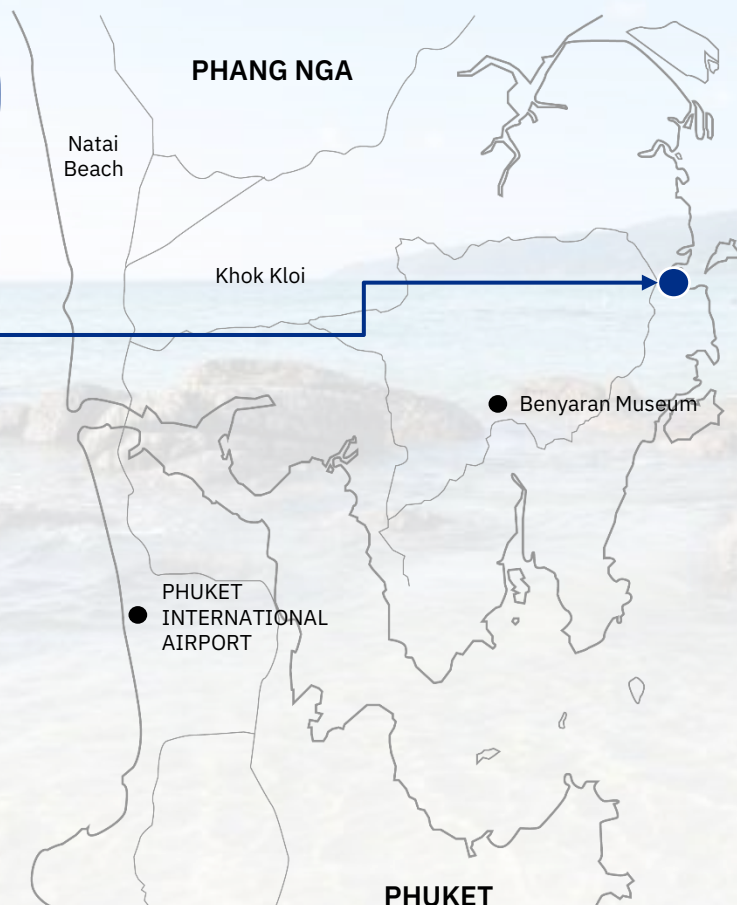


Beyond Skywalk Nangshi
Phang Nga, Thailand





POINT OF INTEREST	km	mins
Ko Tapu (James Bond Island)	7.3	4.5
Koh Yai Noi	22	13.7
Koh Panyee	44.8	44
Khaolak Town	76.3	66
Phuket Town	67.4	76



Phuket International Airport



44.5 km



49 mins



Car/Van

LOCATION

Beyond Skywalk Nangshi your ultimate destination for an unforgettable experience. Choose from sea-view tent, forest tent, sea-view pavilion, or Speciality Explorer Villa all offering stunning view of the sunrise and Samet Nangshe Mountain.

HOTEL DETAIL

Hotel type	Attraction & Resort
Hotel rating	4 star
Number of room (s)	58
Check-in time	15:00 hrs.
Check-out time	12:00 hrs.
Family fun	No
MICE	NO



Beyond Skywalk Nangshi

Phang Nga, Thailand



UNIQUE SELLING POINT

A Million-Dollar View Surrounded by nature, our resort offers breathtaking panoramic views of the Andaman Sea and Samet Nangshe from every vantage point. It is one of Thailand's most exclusive destinations for a truly peaceful escape.

Distinctive Style: Our rooms are designed to let you immerse yourself in the beauty of Phang Nga Bay, from stunning sunrises to starlit nights. Whether you choose our Sea View Tents, Pavilions, Family suite or the Two-Bedroom Pool Villas, there is a perfect space for couples, families, and groups of friends.

Beyond Skywalk: A Must-Visit Landmark Experience Phang Nga's most spectacular "Samet Nangshe" viewpoint on our 180 meter glass skywalk. Hovering 80 meters above sea level, it offers an 'unseen' panoramic perspective that is perfect for every photo enthusiast.



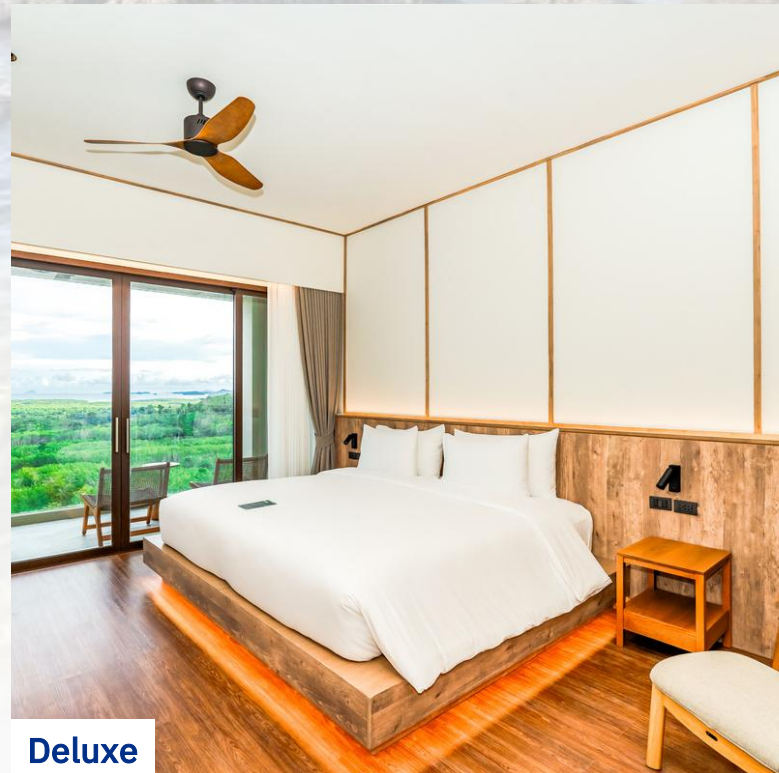
Forest Tent



Seaview Tent



Seaview Pavilion



Deluxe

BEYOND SKYWALK NANGSHI

Accommodation: 58
Room Type: 8

ROOM TYPE	Unit	Sqm (Include Balcony)	Person A+C
Forest Tent	15	73	3
Pavilion	6	30-31	3
Seaview Tent	15	73	3
Seaview Pavilion	16	30-31	3
Deluxe	1	55-60	3
Deluxe Family	1	66	6
Family Seaview	2	66-73	2+2
Two Bedroom Pool Villa	2	240	6

Extra Bed: No

Child Policy:

- Child under 2 years of age, free of charge
- Forest Tent & Seaview Tent guests over 12+ years old are allowed
- Child aged 12+ years counted as an adult



Forest Tent

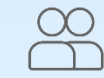
Nestled in the heart of nature, our Forest Tents offer an intimate retreat surrounded by the lush beauty of Samet Nangshe Mountain, blending comfort and tranquility with a private outdoor bathtub on the balcony.



Room size
73 Sqm.



Scenic Views
Seaview



Guest Limits
3



Private En-Suite
1

Amenities



Internet - Free Wifi
for direct bookers



Bathroom - Private
bathroom



Practicle - Phone,
safe, and desk



Hair Dryer



Rain shower with
movable shower head



Slippers



Blackout drapes
and curtains



Bathrobes



Private balcony



Air condition
and daily housekeeping



Non - smoking



Coffee and tea
tray set with kettle



Beach Bag
and Pool towel



Umbrella



Refrigerator and
Complimentary Water



Bean bag



Outdoor Bathtub





Pavilion

Offering the same features as the Seaview Pavilion.



Room size
31 Sqm.



Scenic Views
Seaview



Guest Limits
3



Private En-Suite
1

Amenities



Internet - Free Wifi
for direct bookers



Bathroom - Private
bathroom



Practicle - Phone,
safe, and desk



Hair Dryer



Entertainment - Cable
channels



Rain shower with
movable shower head



Slippers



Blackout drapes
and curtains



Bathrobes



Private balcony



Air condition
and daily housekeeping



Capsule coffee/tea maker



Beach Bag
and Pool towel



Umbrella



Refrigerator and
Complimentary Water





Seaview Tent

Wake up to panoramic sunrise views over the Andaman Sea in our Seaview Tents, offering a peaceful retreat with breathtaking ocean vistas and a private outdoor bathtub on the balcony.



Room size
73 Sqm.



Scenic Views
Seaview



Guest Limits
3



Private En-Suite
1

Amenities



Internet - Free Wifi
for direct bookers



Bathroom - Private
bathroom



Practice - Phone,
safe, and desk



Hair Dryer



Rain shower with
movable shower head



Slippers



Blackout drapes
and curtains



Bathrobes



Private balcony



Air condition
and daily housekeeping



Non - smoking



Capsule coffee/tea maker



Beach Bag
and Pool towel



Umbrella



Refrigerator and
Complimentary Water



Bean bag



Outdoor Bathtub





Seaview Pavilion

Experience a unique stay in our Seaview Pavilions, with panoramic views of limestone mountains.



Room size
31 Sqm.



Scenic Views
Seaview



Guest Limits
3



Private En-Suite
1

Amenities



Internet - Free Wifi
for direct bookers



Bathroom - Private
bathroom



Practicle - Phone,
safe, and desk



Hair Dryer



Entertainment - Cable
channels



Rain shower with
movable shower head



Slippers



Blackout drapes
and curtains



Bathrobes



Private balcony



Air condition
and daily housekeeping



Capsule coffee/tea maker



Beach Bag
and Pool towel



Umbrella



Refrigerator and
Complimentary Water



Deluxe

This cozy room features a king bed for two.



Room size
60 Sqm.



Scenic Views
Seaview



Guest Limits
3



Private En-Suite
1

Amenities



Internet - Free Wifi
for direct bookers



Bathroom - Private
bathroom



Practicle - Phone,
safe, and desk



Hair Dryer



Entertainment - Cable
channels



Rain shower with
movable shower head



Slippers



Blackout drapes
and curtains



Bathrobes



Private balcony



Air condition
and daily housekeeping



Capsule coffee/tea maker



Beach Bag
and Pool towel



Umbrella



Refrigerator and
Complimentary Water



Deluxe Family

Perfect for families or groups, this spacious room features two king beds and a bunk bed.



Room size
66 Sqm.



Scenic Views
Seaview



Guest Limits
4



Private En-Suite
1

Amenities



Internet - Free Wifi
for direct bookers



Bathroom - Private
bathroom



Practicle - Phone,
safe, and desk



Hair Dryer



Entertainment - Cable
channels



Rain shower with
movable shower head



Slippers



Blackout drapes
and curtains



Bathrobes



Private balcony



Air condition
and daily housekeeping



Capsule coffee/tea maker



Bunk bed



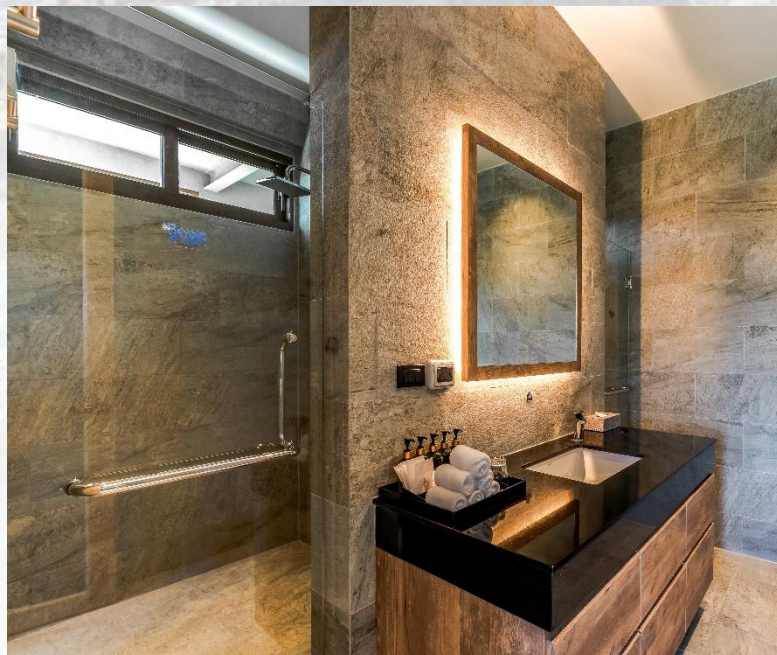
Beach Bag
and Pool towel



Umbrella



Refrigerator and
Complimentary Water



Family Seaview

Ideal for 2 adults and 2 children, this inviting room features a king bed.



Room size
73 Sqm.



Scenic Views
Seaview



Guest Limits
4



Private En-Suite
1

Amenities



Internet - Free Wifi
for direct bookers



Bathroom - Private
bathroom



Practicle - Phone,
safe, and desk



Hair Dryer



Entertainment - Cable
channels



Rain shower with
movable shower head



Slippers



Blackout drapes
and curtains



Bathrobes



Private balcony



Air condition
and daily housekeeping



Capsule coffee/tea maker



Bunk bed



Beach Bag
and Pool towel



Umbrella



Refrigerator and
Complimentary Water



Two Bedroom Pool Villa

Experience elegance and privacy in our Two Bedroom Pool Villa, perfect for large families, groups of friends, or VIP guests. Located at the top for an exclusive retreat, this villa features a private pool, a Jacuzzi on the balcony, two spacious bedrooms, and a large living room with three smart TVs, all with stunning views of the limestone mountains rising from the sea in Phang Nga Bay and breathtaking sunrises—creating a perfect backdrop for your stay.



Room size
240 Sqm.



Scenic Views
Seaview



Guest Limits
6



Private En-Suite
1

Amenities



Internet - Free Wifi
for direct bookers



Bathroom - Private
bathroom



Practicle - Phone,
safe, and desk



Hair Dryer



Entertainment - Cable
channels



Rain shower with
movable shower head



Slippers



Blackout drapes
and curtains



Bathrobes



Private balcony



Air condition
and daily housekeeping



Capsule coffee/tea maker



Comfortable loungers and
a personal swimming pool



Beach Bag
and Pool towel



Umbrella



Refrigerator and
Complimentary Water



Outdoor Jacuzzi





Horizon Restaurant



Kanda Coffee and Bakery



Rub Tawan Restaurant



FACILITY

Facility	Opening Time	Seat
FOOD & BEVERAGE		
Horizon Restaurant	06:30 - 22:00	60-80
Kanda Coffee and Bakery (We proudly serve Starbucks)	06:00 - 19:00	20-40
Pool Bar	10:00 - 18:00	24
Rub Tawan Restaurant	06:30 - 19:00	114
HEALTH & ACTIVITY		
Beyond Skywalk	06:00 - 19:00	-
Swimming Pool	10:00 - 18:00	-
Fitness	07:00 - 19:00	-

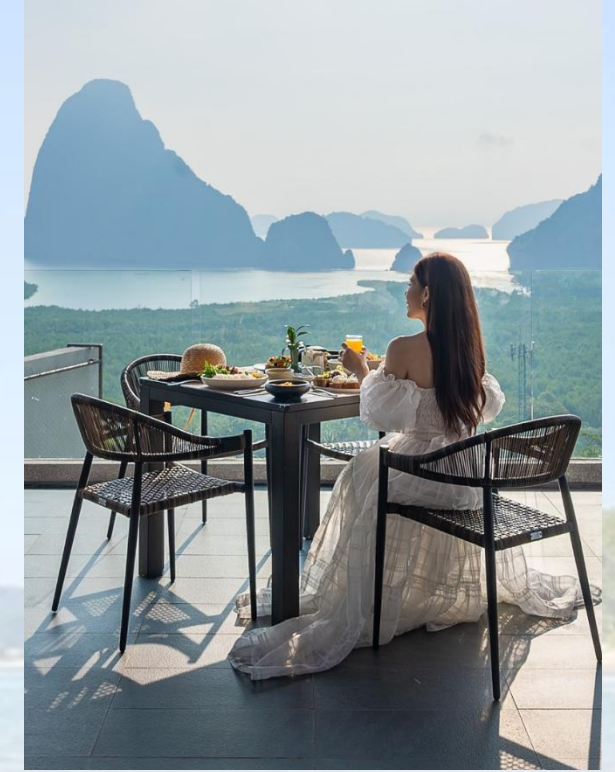
Horizon Restaurant

This all-day dining experience invites you to savor a blend of Thai and international flavors, set against breathtaking views of Samet Nangshi Mountain, the Andaman Sea, and our glass and steel skywalk. Whether enjoying sunrise breakfasts or sunset dinners, every meal here is a journey for the senses.

With our Halal Certification, we proudly adhere to Thailand's national Halal Kitchen Standard, ensuring an inclusive dining experience for all guests. At Beyond Skywalk Nangshi, each moment is a feast for the senses.

Open Daily 06:30 - 22:00 hrs.

Capacity 60-80 seats



Kanda Coffee and Bakery

A haven for relaxation, Kanda Coffee and Bakery invites you to indulge in sweet treats like Bingzu, Honey Toast, Pangchayen, homemade pastries, and Bubble Milk Tea. Enjoy a coffee as you take in the million-dollar view from our outdoor seating, with panoramic vistas of Phang Nga Bay and our stunning glass and steel skywalk.

With our Halal Certification, we proudly adhere to Thailand's national Halal Kitchen Standard, ensuring an inclusive dining experience for all guests. At Beyond Skywalk Nangshi, each moment is a feast for the senses.

Open Daily 06:00 - 19:00 hrs.

Capacity 20-40 seats



Rub Tawan Restaurant

An open-air restaurant offering a 180-degree panoramic view of Phang Nga Bay and our glass and steel skywalk from every seat, Rub Tawan Restaurant is the perfect spot to enjoy authentic southern Thai cuisine in a true buffet style. Ideal for guests visiting the Skywalk, every meal here is a delightful experience, complemented by stunning views.

With our Halal Certification, we proudly adhere to Thailand's national Halal Kitchen Standard, ensuring an inclusive dining experience for all guests. At Beyond Skywalk Nangshi, each moment is a feast for the senses.

Open Daily 06:30 - 19:00 hrs.

Capacity 114 seats

Romantic Private Dinner



Facilities

Discover Extraordinary Facilities at Beyond Skywalk Nangshi

Indulge in extraordinary facilities designed to elevate your stay at Beyond Skywalk Nangshi. Every step you take feels like floating in the sky, with breathtaking vistas at every glance. This is where nature's masterpiece meets human ingenuity, crafting an unforgettable experience that will leave you in awe.

Relax and unwind at our Pool Bar with refreshing cocktails by the pool, surrounded by the serene beauty of Samet Nangshe Mountain and the Andaman Sea.

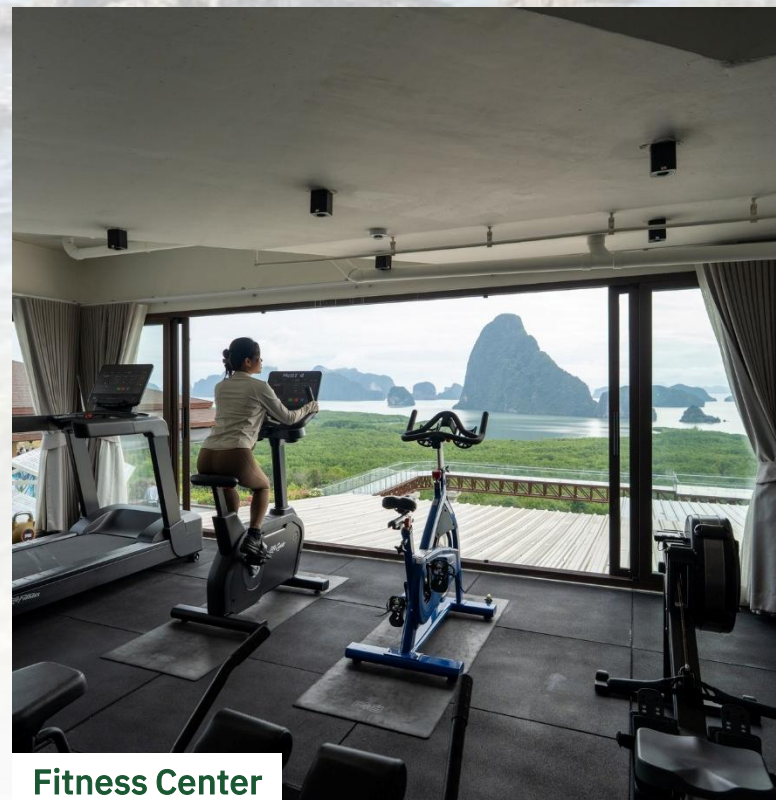
Walk on the Sky at Phang Nga's Beyond Skywalk, where you'll capture million-dollar views. Whether it's the sunrise, sunset, or the Milky Way lighting up the night sky, share the magic with friends and family on social media. Beyond Skywalk Nangshi is a truly awe-inspiring experience.



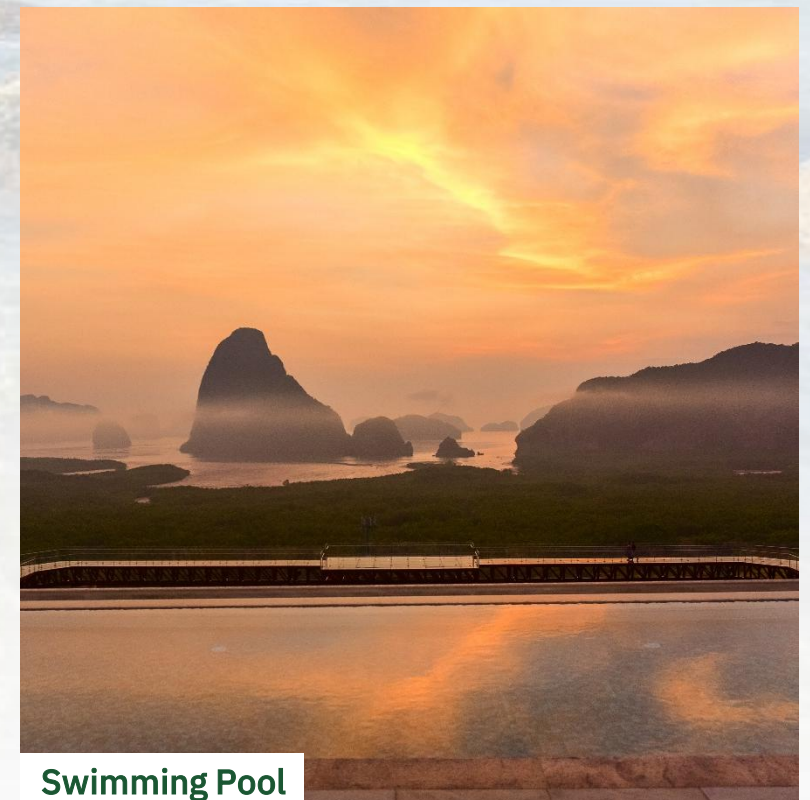
Beyond Skywalk



Open-air Courtyard



Fitness Center



Swimming Pool

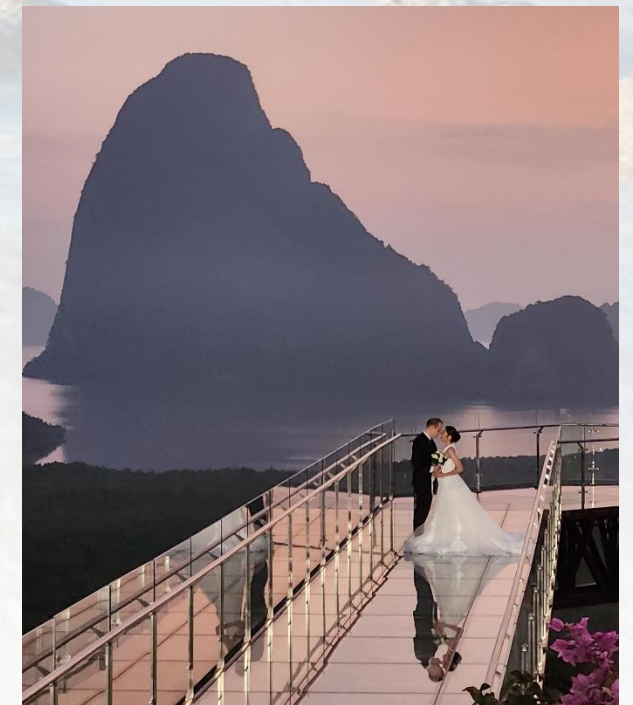
Activity



Monk Ceremony



Wedding





PLEASE HELP US SAVE PRECIOUS WATER AND ENERGY SUPPLIES

WE WOULD APPRECIATE YOUR HELP
Laundering bed linen and towels uses considerable amounts of water and electricity, and reducing in the volume of fabrics sent to the laundry can significantly lessen the use of these resources.
If you wish to continue using the same towels, please hang them on the rack like you do at home.
Should you prefer to have fresh towels, simply place the used ones on the bathroom floor or in the towel basket.
If you wish to change your bed linen, please let us know by placing this card on the bed.
THANK YOU FOR JOINING US IN CONSERVING THE ENVIRONMENT

● 请配合我们节省宝贵的水和电资源。
床单和毛巾的洗涤亦需要消耗大量的水和电资源,降低更换频率可以降低资源消耗。
如果您继续使用毛巾,请将毛巾挂在衣架上。
如果您希望更换毛巾,请将毛巾放到脏衣筐或卫生间地上。
需要换床单,请把床单放在床上。
感谢您参与我们节约资源的行动。

● Пожалуйста, помогите нам сохранить драгоценную воду и источники энергии.
Стира постельного белья и полотенец затрачивает воду и электричество, а также использует природные источники.
Если вы желаете продолжать использовать Ваше полотенце, пожалуйста, развесьте его на крючке в ванной комнате, так, как вы делаете это дома.
Если вы желаете, чтобы Ваше полотенце заменили - оставьте его на полу в ванной комнате или в коридоре для полотенец.
Если вы хотите сменить постельное белье, сообщите нам об этом, положив эту карточку на свою кровать.
Спасибо, что вы присоединились к нашему сохранению окружающей среды.

น้ำและพลังงานมีค่า โปรดช่วยกันประหยัด

เราขอขอบคุณที่ช่วยกันอนุรักษ์ธรรมชาติและสิ่งแวดล้อม
การซักผ้าใช้ทั้งน้ำและไฟฟ้าจำนวนมาก การลดปริมาณผ้าที่ส่งไปซักผ้าสามารถช่วยลดการใช้ทรัพยากรน้ำและไฟฟ้าได้เป็นอย่างมาก การนำผ้าใช้ซ้ำหรือแขวนผ้าที่สะอาดไว้บนราวจะช่วยลดการใช้ผ้าและน้ำได้เป็นอย่างดี
หากคุณต้องการใช้ผ้าและน้ำซ้ำ กรุณาแขวนผ้าที่สะอาดไว้บนราวเหมือนที่คุณทำอยู่ที่บ้าน
หากคุณต้องการเปลี่ยนผ้าปูที่นอน กรุณาให้เราทราบว่าโดยนำการ์ดใบนี้มาวางบนเตียงของคุณ
ขอขอบคุณที่เข้าร่วมกับเราในการอนุรักษ์สิ่งแวดล้อม

WIR WÜRDEN UNS ÜBER IHRE HILFE FREUEN
Das Reinigen von Bettwäsche und Handtüchern verbraucht erhebliche Mengen Wasser und Strom. Die Ressourcen können jedoch deutlich reduziert werden, wenn weniger Wäsche zur Reinigung gegeben wird. Sollten Sie weiterhin die gleichen Handtücher verwenden wollen, hängen Sie diese bitte wie zu Hause an den Handtücherhalter.
Falls Sie Ihr Bett neu bezogen haben möchten, bitte legen Sie diese Karte auf Ihr Bett.
VIELEN DANK, DASS SIE SICH UNS BEIM UMWELTSCHUTZ ANSCHLIESSEN

NOUS VOUS REMERCIONS POUR VOTRE CONTRIBUTION
Les lessives pour le linge de maison, parures de lit et serviettes, consomment de grandes quantités d'eau et d'électricité. Réduire le volume de ces lessives réduit de façon significative leur consommation en eau et électricité.
Si vous souhaitez utiliser les mêmes serviettes, merci de les suspendre comme vous le feriez à la maison.
Si vous souhaitez changer votre linge de lit, veuillez nous le faire savoir en plaçant cette carte sur votre lit.
MERCI DE VOUS JOINDRE À NOS EFFORTS POUR LA PROTECTION DE L'ENVIRONNEMENT.

please scan QR code to get more information about our sustainability policy

please scan QR code to get more information about our sustainability policy

BEYOND GREEN STATEMENT

Beyond Skywalk Nangshi operates on the core philosophy, **"Beyond A Good Place Is A Better Planet ,"** making environmental and social responsibility central to every guest experience. We seamlessly blend luxury with stewardship by implementing initiatives like energy efficiency, rigorous waste reduction, and water conservation. Our commitment to responsible tourism extends to fostering community engagement and achieving international certifications, ensuring these green practices are fully integrated into our daily operation.

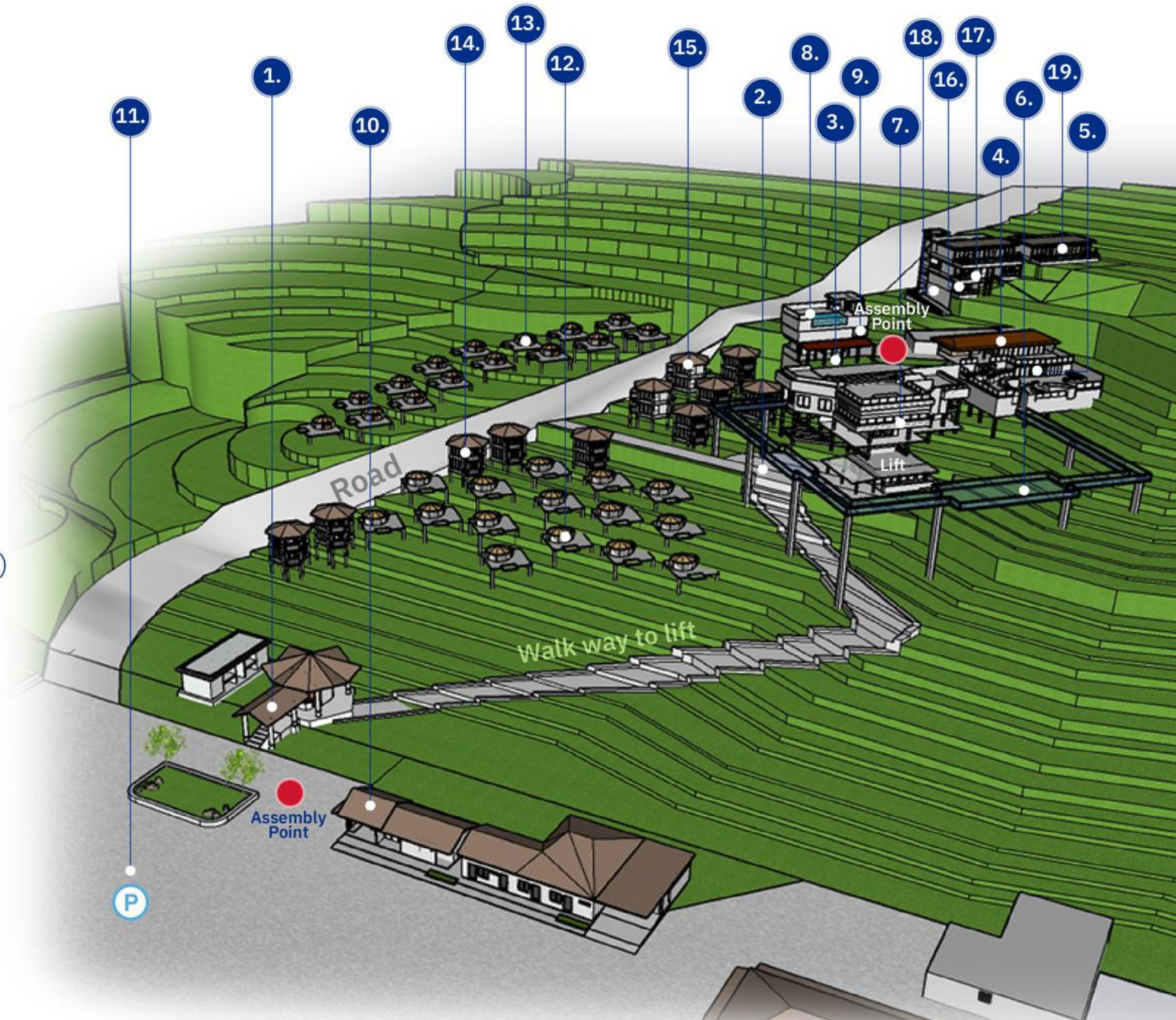


BEYOND SKYWALK NANGSHI

 **Assembly Point**
(Fire, Tsunami, Earthquake
or Other Emergencies)

 **Parking Area**

1. Main Entrance & Lobby
2. Entrance to lift
3. Rub Tawan Restaurant
4. Horizon Restaurant
5. Kanda
6. Skywalk
7. Meeting Room
8. Swimming Pool & Bar
9. Fitness
10. Minimart
11. Parking Area
12. Seaview Tent(Room B0101 - B0403)
13. Forest Tent (Room B0711 - B0752)
14. Seaview Pavilion (Room B1011 - B5042)
15. Pavilion (Room B5021 - B6032)
16. Deluxe Family (Room 8811)
17. Family Seaview (Room 8833 / 8855)
18. Deluxe Forest View (Room 8822)
19. Two Bedroom Pool Villa
(Room 8899 / 9999)



From **Beyond Skywalk Nangshi** to
Phuket International Airport

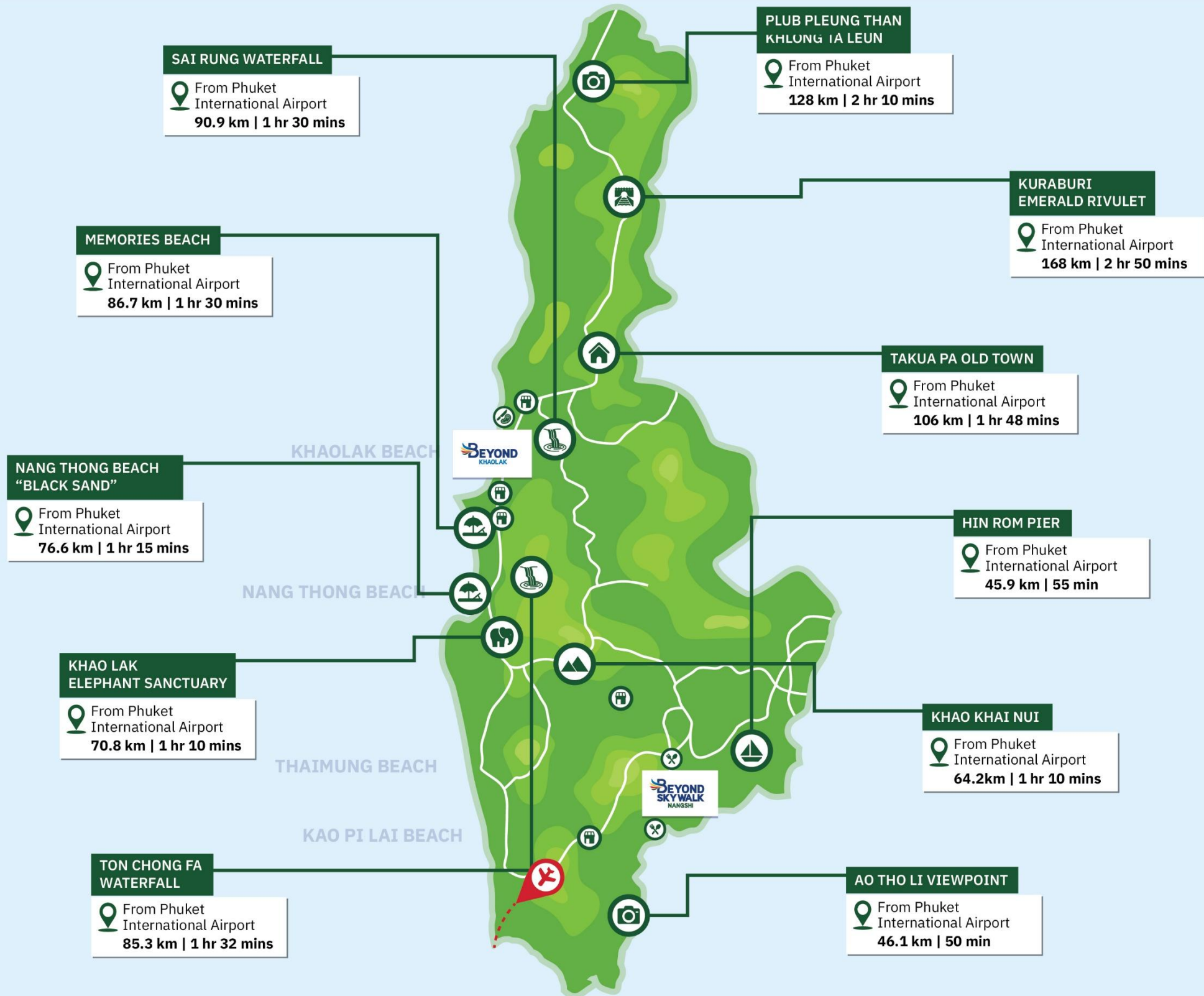
44.5 km. | 49 mins

(เวลาและระยะทางโดยประมาณจาก google map/
Estimated time and distance from google maps.)

PHANG NGA, พังงา

HOTEL MAP WITH TOURIST ATTRACTION

แผนที่โรงแรม กับสถานที่ท่องเที่ยว





Contact us

Pamookkoo Resort

Tel (+66) 7664 3300
Fax (+66) 7664 3333
E-Mail rsvn-pmkr@katagroup.com
Address 70/1 Kata Rd, Tambon Karon
Muang Phuket, 83100

🌐 pamookkoo.katagroup.com
f📷 pamookkooresortphuket

Beyond Karon

Tel (+66) 7633 0006
Fax (+66) 7633 0529
E-Mail rsvn-brkr@katagroup.com
Address 51 Karon Rd, Karon Beach
Tambon Karon, Muang Phuket 83100

🌐 karon.beyondresort.com
f📷 beyondkaron

ananea Beyond Khaolak

Tel (+66) 7659 2333
Fax (+66) 7659 2399
E-Mail rsvn-ananea@beyondkhaolak.com
Address 9/69 Moo 1, Pak Weep Beach,
Khuk Khak, Takua Pa, Phang Nga
82220

🌐 ananeabeyondkhaolak.com
f📷 ananeabeyondkhaolak

Phuket Orchid Resort & Spa

Tel (+66) 7635 8300
Fax (+66) 7635 8399
E-Mail rsvn-pors@katagroup.com
Address 34, Luangphochuan Rd, Karon Beach,
Tambon Karon, muang Phuket 83100

🌐 orchid.katagroup.com
f📷 phuketorchidresort

Beyond Patong

Tel (+66) 7656 2333
Fax (+66) 7656 2333
E-Mail rsvn-bhpt@katagroup.com
Address 8 Sawatdirak Rd, Tambon Patong
Kathu Phuket 83150

🌐 patong.beyondresort.com
f📷 beyondpatong



PHUKET OFFICE

Tel (+66) 7635 8300
Fax (+66) 7635 8399
E-Mail reservations@katagroup.com

BANGKOK OFFICE

Tel (+66) 2616 3140-4
Fax (+66) 2616 3145
E-Mail reservations@katagroup.com

Beyond Kata

Tel (+66) 7636 0333
Fax (+66) 7636 0399
E-Mail info-brkt@katagroup.com
Address 1 Pakbang Rd, Kata Beach
Tambon Karon, Muang Phuket
83100

🌐 kata.beyondresort.com
f📷 beyondkata

Beyond Skywalk Nangshi

Tel (+66) 7642 9965
E-Mail infobsky@katagroup.com
Address Villa Samet Nangshi co., ltd.
9/9 Moo2, Tambon Khlong Khian,
Takuathung, Phang Nga 82130
9/1 Moo2, Tambon Khlong Khian,
Takuathung, Phang Nga 82130

🌐 skywalk-nangshi.beyondresort.com
f📷 beyondskywalknangshi



Kata Group
Media Center



Kata Group and Beyond Resorts has been a distinguished leader in the Thai hospitality industry for **over 45 years**, establishing us as one of the country's longest serving local Thai hoteliers. Our expanding portfolio gracefully extends across the most coveted leisure destinations in Southern Thailand, including Phuket, Phang-Nga, Krabi, and Koh Samui. The collection features seven exquisite Beyond Resorts, two of which are professionally managed by a globally recognised hospitality brand. This extensive brand family also includes one Beyond Resort embodying a unique European lifestyle design under the ananea brand, alongside two cherished, family-centric Kata Group properties. We sincerely invite you to join us in creating new cherished memories and extend our heartfelt gratitude for your continued trust.



Kata Group and Beyond Resorts

