



THE SHELLSEA

K R A B I



The ShellSea is a luxury boutique resort located in an idyllic setting adjacent to Fossil Shell Beach at Krabi, one of only three known such geological formations in the world. The resort has its own extensive frontage on the Andaman Sea, with direct access to a beach of fine golden sand.

There are 72 spacious rooms, 12 luxurious villas with private pool, and a grand pool villa to provide you with the perfect accommodation for a luxurious romantic getaway or a family holiday. Facilities include a lap pool, a family pool, an awe-inspiring ocean-view spa, a spectacular beachfront bar, restaurants, and a selection of non-motorised recreational water sport equipment.

A shaded area on the beach provides space for daytime relaxation, and there is a clustered sunbathing area facing the sea. An abundance of activities await those who want to be more active, and bicycles are available that can be used to explore the paths around the geological site of Fossil Shell Beach or the village life around resort. You can take a kayak or stroll the stretch of sandy beach to Fossil Shell Beach, or simply spend a healthy day poolside and in the fitness centre.

ACCOMMODATION

Rooms & Villas	Size	Total of rooms
ShellSea Garden	45 sqm	48
ShellSea Ocean	45 sqm	12
Seaview Pool Access	45 sqm	12
Garden Pool Villa	118 sqm	8
Sea View Pool Villa	118 sqm	4
Grand Pool Villa	200 sqm	1
Total		85

Note: Room area of 45 sqm includes balcony

SHELLSEA GARDEN

Clustered around our tropical gardens within easy reach of the breezy lobby and Cerulean Restaurant are our collection of 45 sqm ShellSea Garden rooms. Featuring a sofa lounge area and sleeping zone with king-sized or twin beds, and a television that can be tilted for easy viewing from any direction, these rooms are perfect for total relaxation.

SHELLSEA OCEAN

With dreamy views of the Andaman Sea, ShellSea Ocean rooms are light and airy, and represent a wonderful Krabi experience. Awaken to vibrant blues and greens beckoning you to the spacious balcony to enjoy the ocean breezes and a cup of fine tea or coffee.

SEAVIEW POOL ACCESS

Situated on the ground floor next to the two inviting swimming pools, the Seaview Pool Access rooms are the perfect choice for those who love to spend their holidays poolside. Simply step from your private terrace into the pool and let your cares drift away under the wide-open sky.

After a refreshing dip and some Jacuzzi bubbles outside, retreat indoors and sprawl out on the sofa or on the extremely comfortable bed with wonderfully plump pillows.

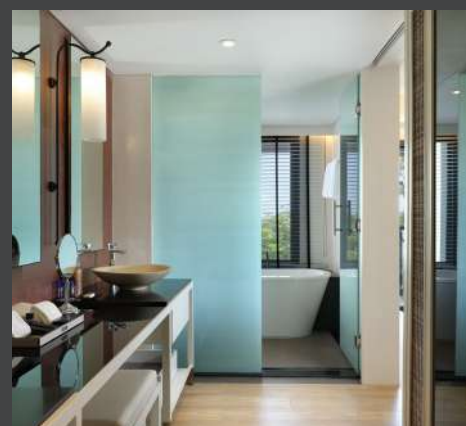
GARDEN POOL VILLA

The Garden Pool Villa has its own tropical garden and a private plunge pool, with the accommodation offering an enormous 118 sqm of personal space with a double bedroom, living room, kitchenette, and a large bathroom with separate bath and rain shower.

Set in the lush private garden is a luxurious outdoor bathtub in which you can relax and enjoy the fresh tropical fragrances and the cool sea breezes.

The private 2.3 x 6.7 m swimming pool has its own sunbathing terrace equipped with a comfortable sunbed.

The luxurious amenities include a sofa bed in the living room, 180-degree swivel smart TV with 48in screen and international satellite channels, motion sensor lighting, Wi-Fi internet connection, steam iron and ironing board, and a kitchenette with refrigerator, microwave, coffee maker and gourmet tea selection, glassware, crockery, cutlery and utensils, and electric kettle.



SEAVIEW POOL VILLA

A luxurious 118 sqm of space is available at the Sea View Pool Villa along with a private plunge pool with Jacuzzi, and 180-degree views of the Andaman Sea through the enormous picture windows that flood the villa with natural light.

The accommodation consists of a double bedroom with separate bathroom, a living room, and kitchenette. In the villa's secluded garden is an outdoor bathtub in which to lay back and enjoy the soothing view and cool ocean breezes.

The private 2.3 x 6.7 m swimming pool has its own sunbathing terrace equipped with a comfortable sunbed. The villa's luxurious amenities include a sofa bed in the living room, 180-degree swivel smart TV with 48in screen and international satellite channels, motion sensor lighting, Wi-Fi internet connection, steam iron and ironing board, and a kitchenette with refrigerator, microwave, coffee maker and gourmet tea selection, glassware, crockery, cutlery and utensils, and electric kettle.

MEETING FACILITIES

NEPTUNE: (W6 m x L16 m x H3.9 m)

Our 96-sqm meeting room with a high ceiling and a fresh and bright ambience provides a perfect setting for private banquets, seminars, receptions and conferences.

The stylish and fully equipped meeting facilities and boardroom offer high class business environments that will cater to all your business needs. Our experienced team will provide professional assistance for all your technical, catering and service requirements to ensure that your business gathering will be one to remember.

GRAND POOL VILLA

Grand Pool Villa offers the ultimate in luxury and privacy with 200 sqm of living space and a private 3.25 x 12 m swimming pool with Jacuzzi providing a breathtaking 180-degree panorama of the Andaman Sea.

There are two bedrooms each with a super king bed and en suite bathroom, while the lounge and dining area is perfect for families and social occasions. The kitchenette is fully equipped and there is a pantry. The villa is complete with entertainment, refreshments, and a range of personal services at the touch of a button.

In the private and secluded garden is a luxurious outdoor bathtub for lazing in perfect peace and contentment against the magnificent backdrop of the ocean.

The villa's amenities provide everything required for luxurious beachside living, including a sofa bed in the living room, 180-degree swivel smart TV with 54 in screen and international satellite channels, motion sensor lighting, Wi-Fi internet connection, steam iron and ironing board, and a kitchenette with refrigerator, pantry with microwave, coffee maker and gourmet tea selection, glassware, crockery, cutlery and utensils, and electric kettle.



DINING

CERULEAN RESTAURANT

Our casual all-day dining restaurant is located on the lobby level and features a cosy lounge-style decor. The day starts with a hearty breakfast and continues through to dinner in the late evening. Thai and international cuisines are served, and there is a broad selection of cocktails, spirits, local and international beers, world wines, and soft drinks and juices.

AZURE BAR

An open-air lounge bar fronted by lush tropical gardens, with comfy seating and sofas for relaxing. Our bartenders serve classic cocktails, premium wines and champagnes, beers, juices and other beverages. Fresh-brewed illy coffee, a selection of teas, and a menu of snacks are available. The smooth chilled music sets the mood for relaxation and great conversation.

FIN BAR

A superb beachfront view of Krabi's Fossil Shell Beach can be enjoyed from under the dramatic tented roof of Fin Bar, located on the headland and serving casual daytime snacks of sandwiches, pastas and pizzas. Unforgettable moments are to be had at this beautiful evening spot, as you end the day with a choice from the selection of cocktails, wines, Italian dishes and fresh char-grilled seafood.



FACILITIES

MANTA POOL

- A free-form swimming pool designed for family use.
- 180-degree view of Andaman Sea, adjacent to Fin Bar and to the beach access point from where it is an easy walk of 300m to Fossil Shell Beach
- Depth: 1.3 m
- Children's pool depth: 0.6m

MULLET POOL

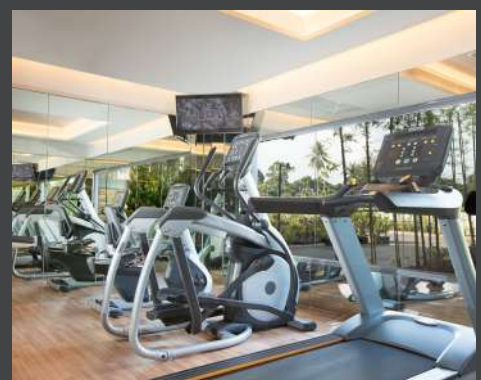
- Adult pool with 180-degree view of Andaman Sea
- Size: W7.6m x L35m
- Depth: 1.2m

OTIUM SPA

Otium Spa is hidden amidst the contours of the resort's lush landscape, a private sanctuary of serenity with a backdrop of awe-inspiring ocean views. White spa suites for singles or couples complete with Jacuzzi bathtubs and steam room offer a sense of purity and calm to indulge in soothing and re-energising head-to-toe treatments.

WAVE FITNESS CENTRE

Keep up with your exercise programme with the latest in workout equipment, including an area for yoga.



GUEST SERVICE

- 24-hour room service
- Complimentary Wi-Fi
- Free daily shuttle to Aonang beach
- Laundry service
- One-touch service telephone operator
- Beach activities
- Fitness centre (Wave)
- Kids' club (Starfish)
- Non-motorised water sport equipment



AREA ATTRACTIONS

- City tour
- Elephant trekking
- Emerald pool and hot spring waterfall
- Fossil Shell Beach
- Four islands
- James Bond discovery tour
- Jungle tour
- Phi Phi Island
- Rock climbing tour
- Snorkelling and diving



LOCATION



The ShellSea is located on the beachfront to the northeast of Fossil Shell Beach.

- 300 metres (5 minutes) beach access to Fossil Shell Beach
- 8 kilometres (15 minutes) to Aonang Beach
- 20 kilometres (20 minutes) from Krabi Town
- 25 kilometres (30 minutes) from Krabi International Airport
- 150 kilometres (2 hours 30 minutes) from Phuket International Airport

The ShellSea
999 Moo 6, Sai Thai, Muang
Krabi 81000, Thailand

T: +66 75 819 519 F: +66 75 819 500
E: info@theshellseakrabi.com
W: www.theshellseakrabi.com