



HOLIDAY INN BANGKOK SILOM

Hotel Presentation



COMFORT and CONVENIENCE Come First

Located on Silom Road at the heart of one of Bangkok's prime commercial, shopping and entertainment locations, the hotel is also next door to the city's jewelry sector, with easy access to Bangkok's suburbs, tourist attractions and Suvarnabhumi International Airport, just a 40 minutes drive away.



HOTEL MAP



Transportation Access

- ▶ **BTS Skytrain**
 - I Surasak Station, Exit 1 (750 m.)
 - 🚶 7 Mins 🚗 4 Mins

- ▶ **Pier**
 - I Sathorn Pier (1.2 km.)
 - 🚶 10 Mins 🚗 6 Mins

- ▶ **Airport**
 - ✈️ **Suvarnabhumi** International Airport
(40 Mins by car)
 - ✈️ **Don Mueang** International Airport
(40 Mins by car)




Holiday Inn Bangkok Silom

BANGKOK'S PRIME COMMERCIAL DISTRICT



A chandelier-lit lobby welcomes you in and envelopes you in laid-back luxury as you make your way to one of the hotel's 684 rooms, which include Standard Rooms, Premium Rooms, and Suites.

All rooms are fitted with high-quality furnishings and free Wi-Fi, while hotel facilities include a 20-metre Swimming Pool, Tennis Court, Executive Club Lounge, Health Club, and a handful of dining options.



ABOUT HOTEL

Accommodations



- Standard Room 346
- Premium Room 286
- Premium Room with Lounge Access 26
- One Bedroom Suite 7
- One Bedroom Premium Suite 18
- Accessible Room 1

Meetings & Events



- Crystal Ballroom
- Silom Ballroom
- Emerald Room
- Topaz Room
- Sapphire Room
- Diamond Room

Restaurants & Bar



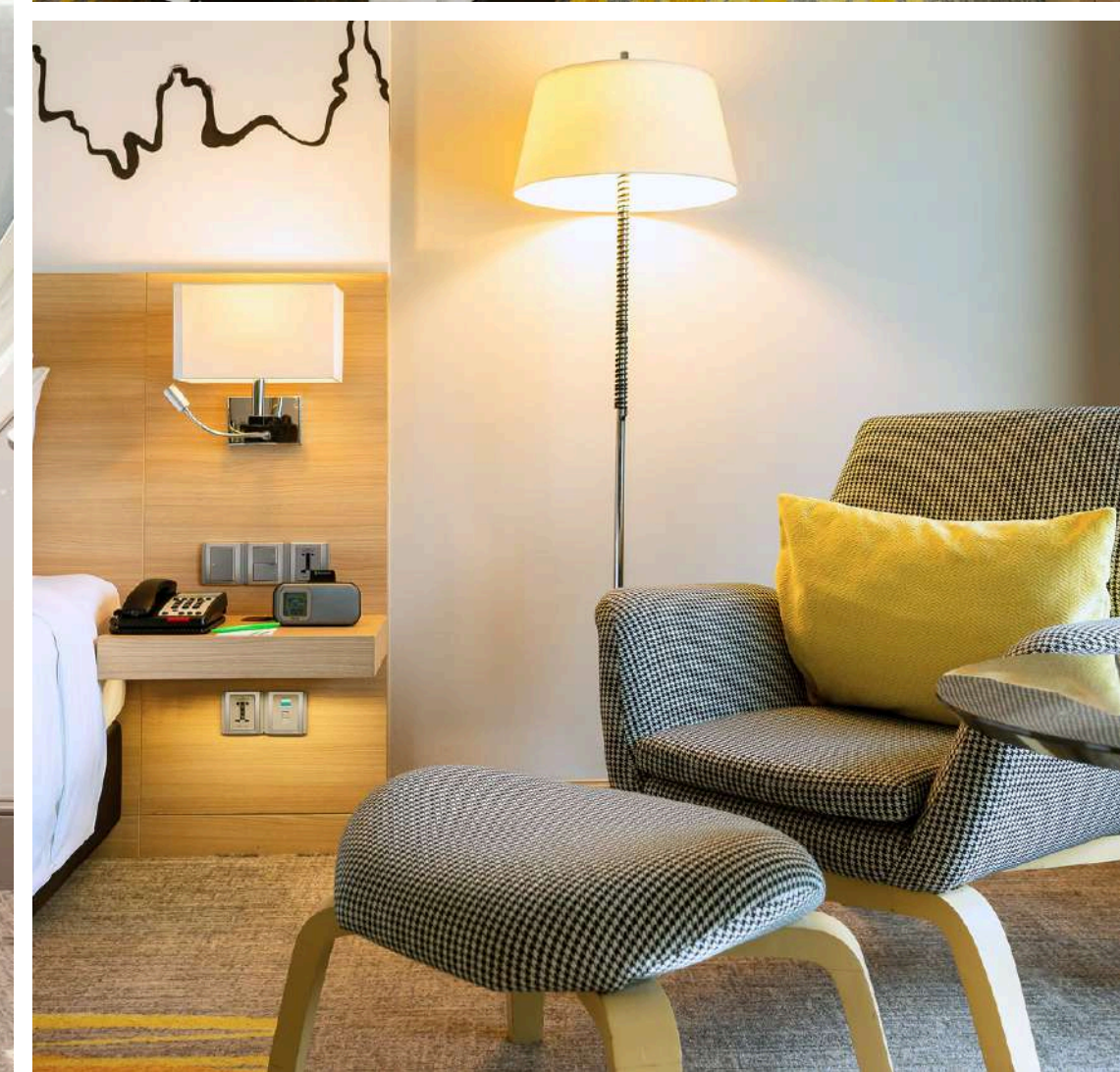
-  The Brasserie
-  Orchid Lounge
-  Hari's Bar
-  The Bakery
-  Aqua Terraza Pool Bar

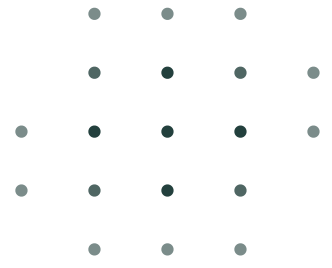
ACCOMMODATIONS



STANDARD ROOM

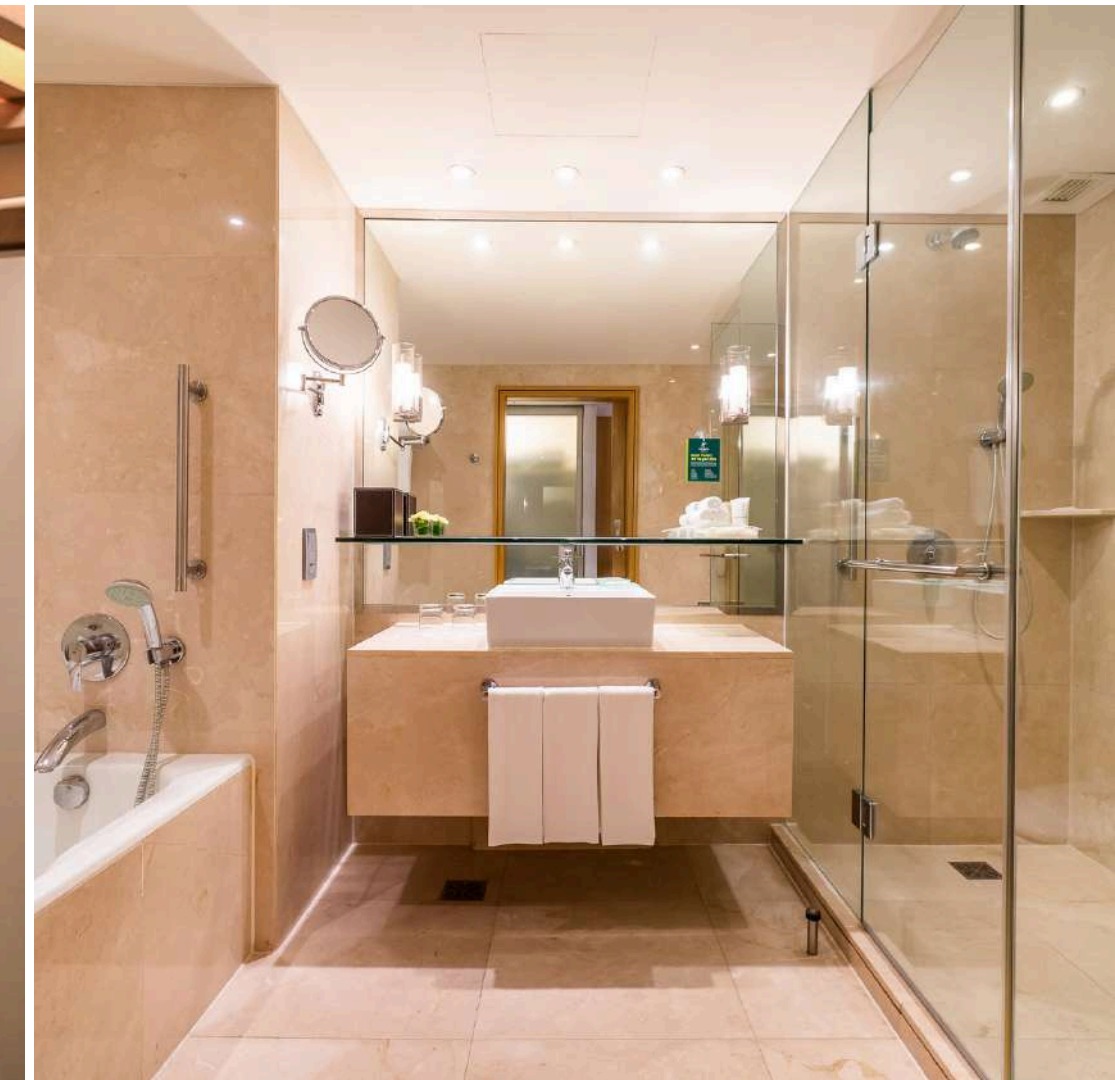
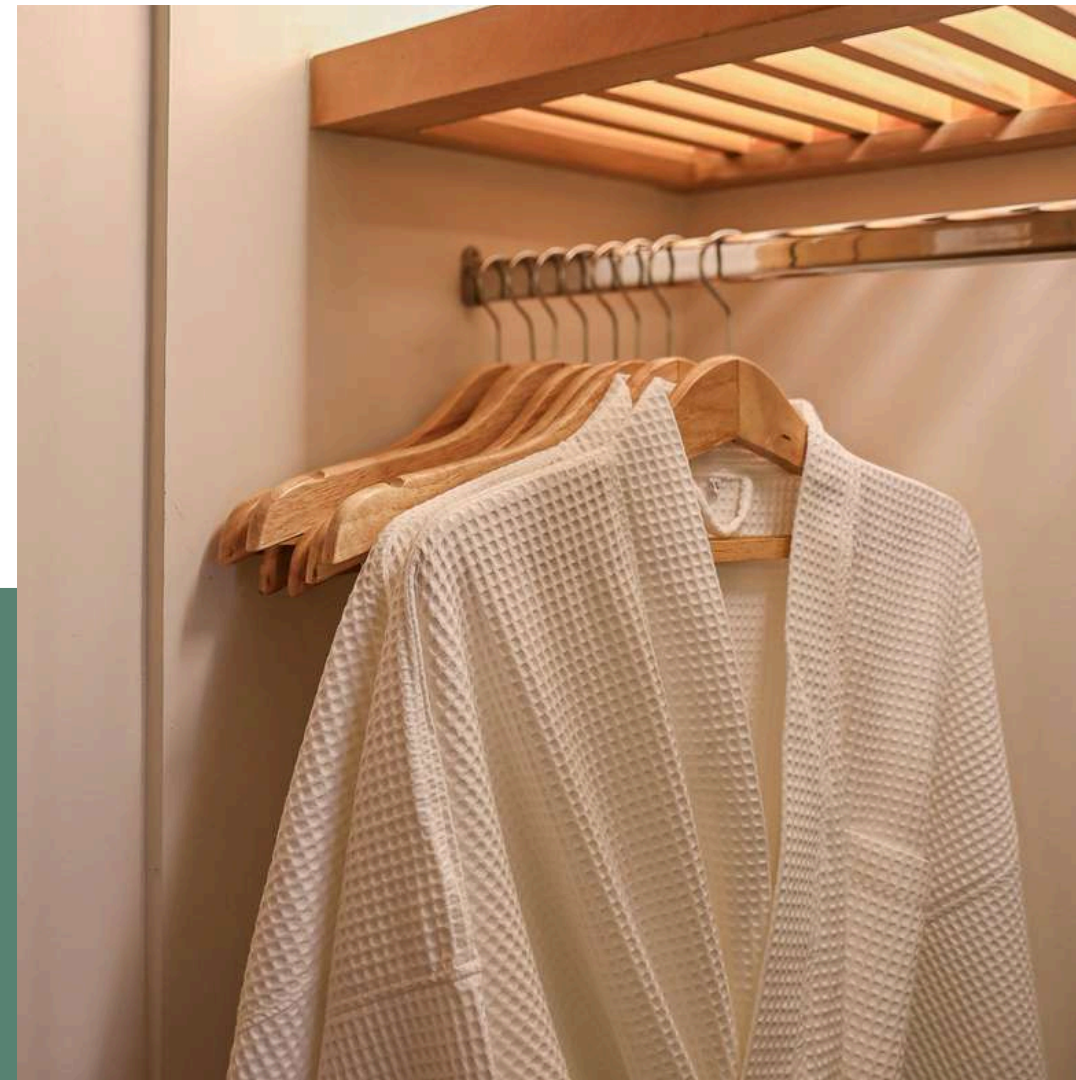
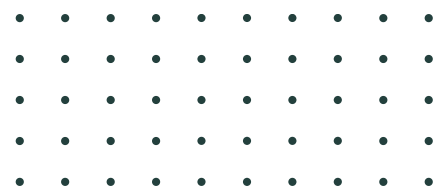
Enjoy a good night's rest in this all-modern 32 sqm room with a soothing colour palette of gold/green and grey. High-quality furnishings, sink-in carpets and an inviting bed with pillow menu are just some of the features, along with a convenient work desk, iron and board, and free Wi-Fi access.

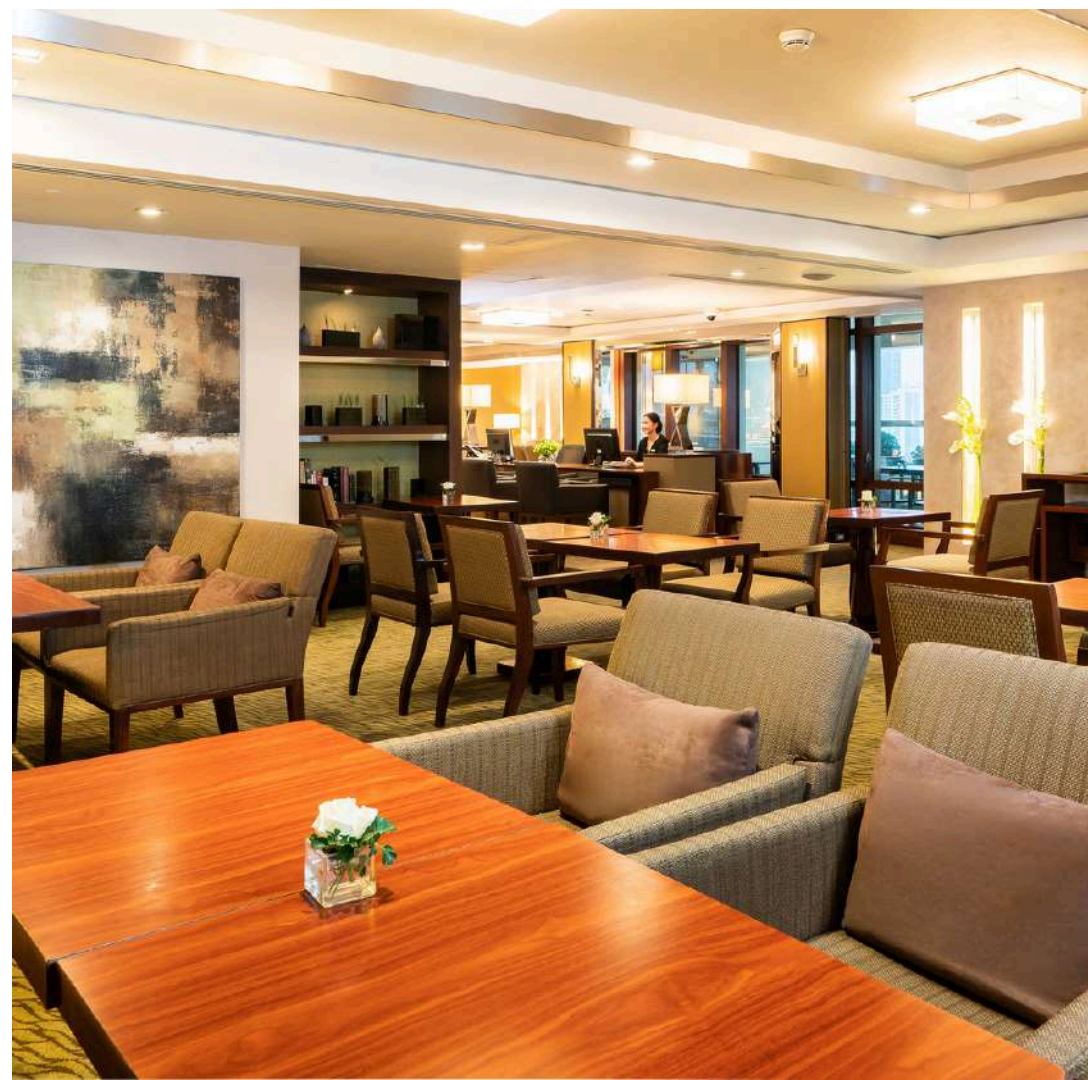
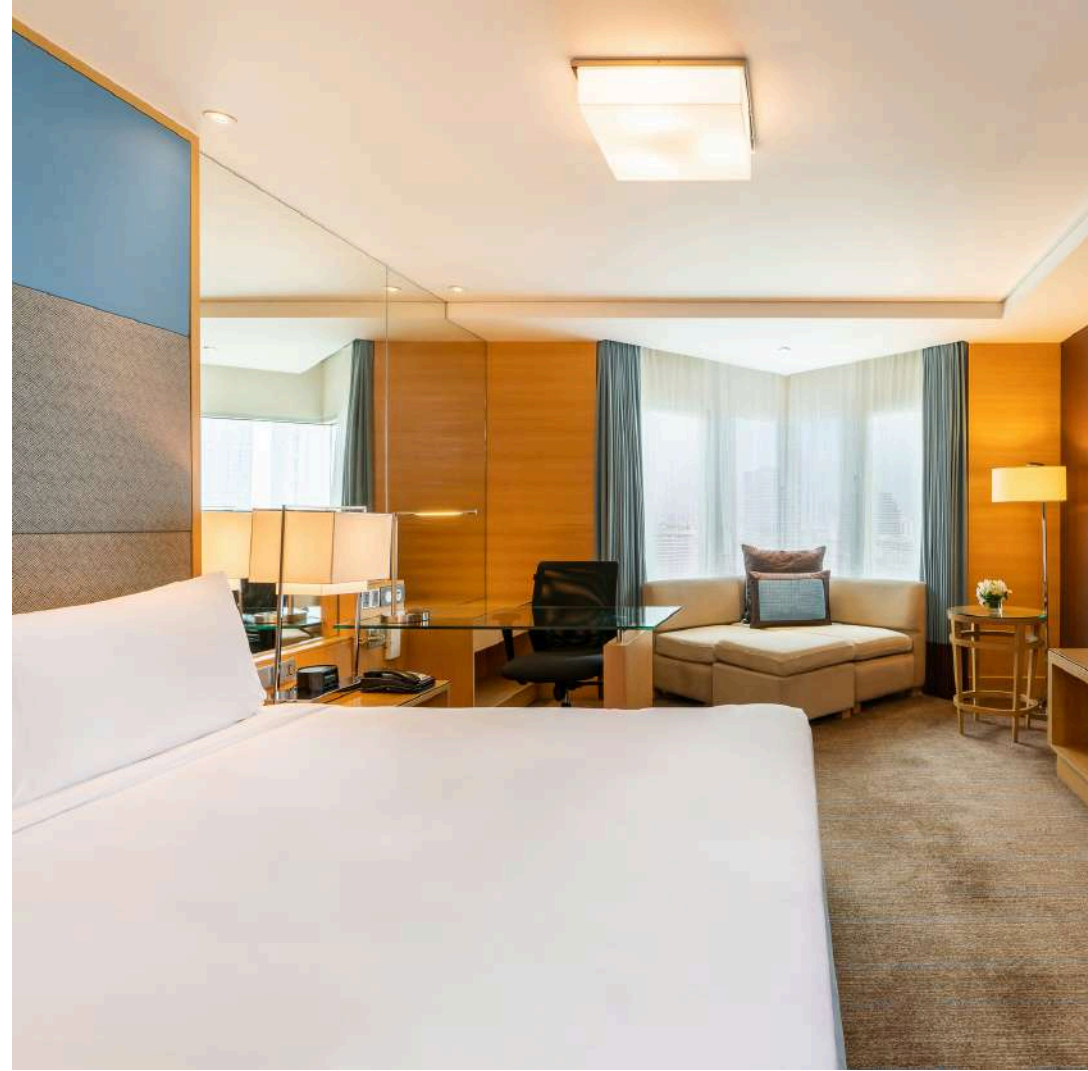




PREMIUM ROOM

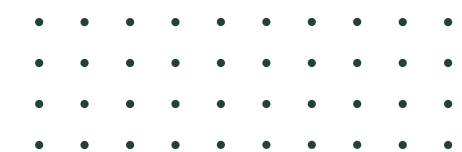
Make your visit to Bangkok a relaxing one, in this spacious 36 sqm room with premium bedding, and a marble-fitted bathroom with separate bathtub and shower room. Also equipped with a spacious working station, iron and board, and free Wi-Fi access.

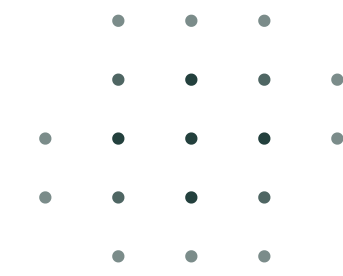
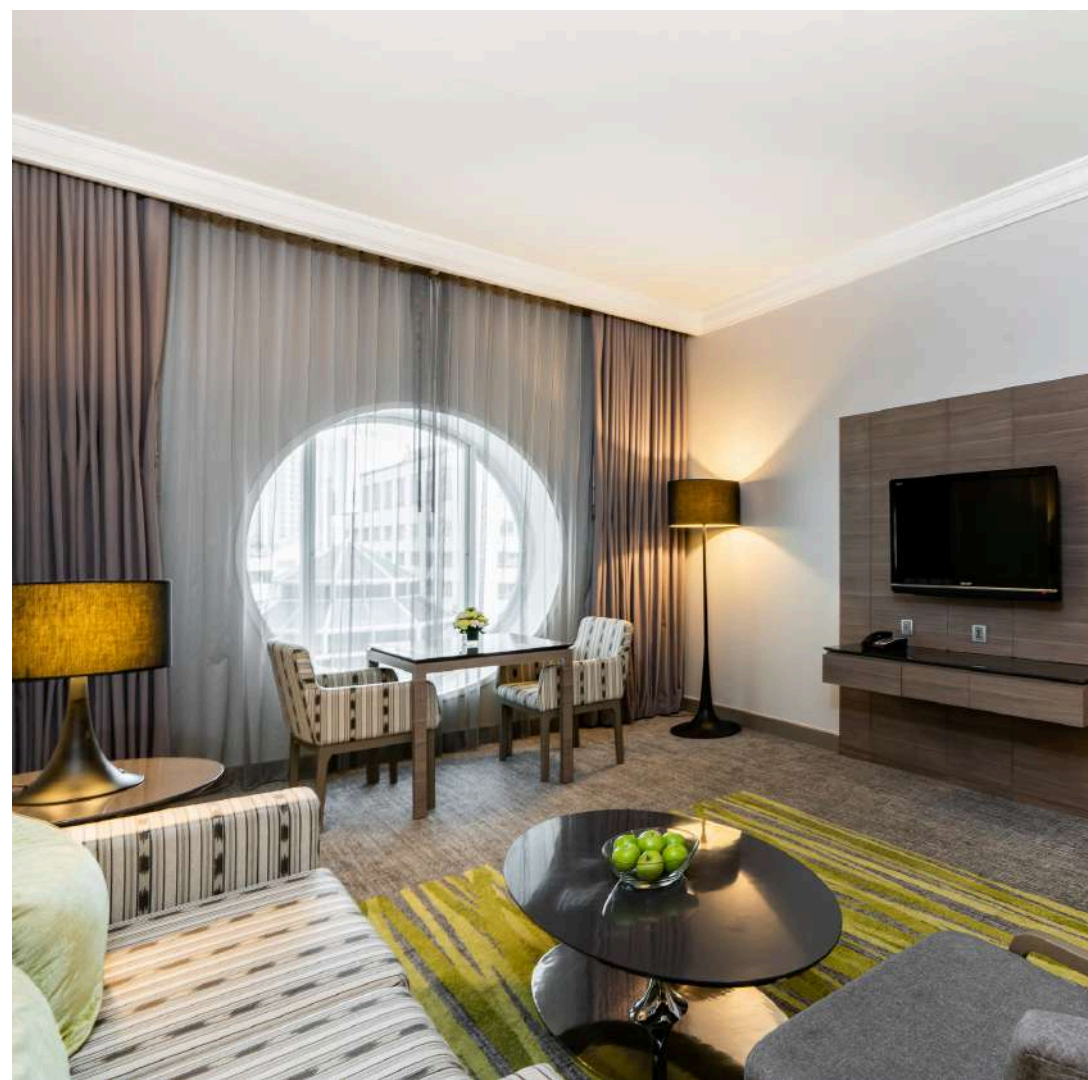




PREMIUM ROOM WITH LOUNGE ACCESS

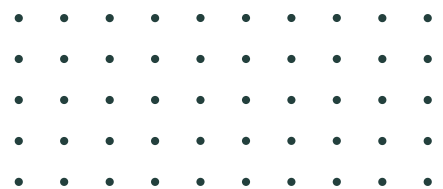
Specially designed for the travelling executive, the 36 sqm Premium Room with Lounge Access is equipped with all the comforts you deserve, including a magnificent city view, premium bedding, and a spacious bathroom. Work or unwind in this inviting space, and enjoy complimentary access to the Executive Club Lounge on the 23rd floor, where you can enjoy breakfast or evening cocktails at your leisure.

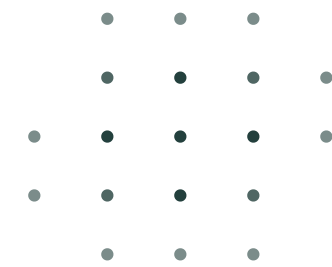




ONE BEDROOM SUITE

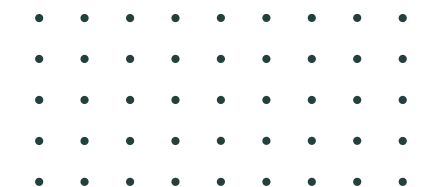
Our fresh and inviting 64 sqm Deluxe Suite includes a separate comfortable living room area includes a dining table which provides extra convenience, as well as cozy sofas with plush pillows. The rooms are also fitted with round windows which overlook the busy city skyline.





ONE BEDROOM PREMIUM SUITE

Treat yourself with our 66 Sqm Premium Suite, complete with separate lounge and master room, as well as premium bedding with a pillow menu. Other features include a spacious desk and free Wi-Fi.



EXECUTIVE CLUB LOUNGE

OPEN DAILY 10:00 AM - 9:00 PM

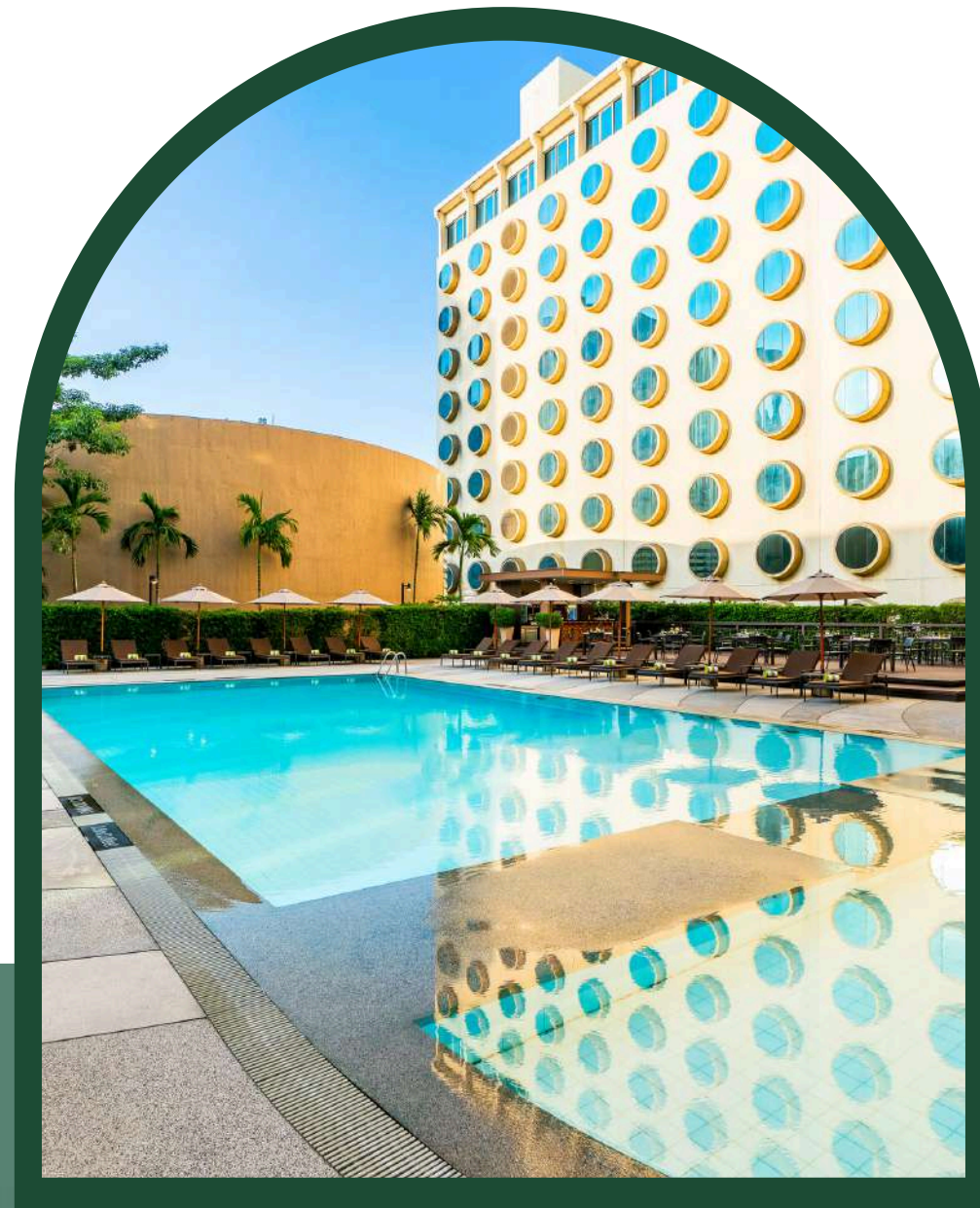


Our stylish retreat is reserved for discerning business travelers and is equipped with a range of additional comforts and privileges. Our lounge offers complimentary refreshing beverages and snacks throughout the day, as well as Social Hours in the evening from 6:00 to 8:00 pm and a meeting room to assist you with your work assignments.

RECREATION FACILITIES



Gym, Sauna
and Steam Room



Swimming Pool



Tennis Court

RESTAURANTS & BAR





the brasserie

THE BRASSERIE

OPEN DAILY

Breakfast: 6:00 am – 10:30 am

Lunch: 12:00 pm – 2:30 pm

Dinner: 6:00 pm – 10:00 pm



Enjoy a sumptuous variety of international cuisine in a fresh and contemporary atmosphere at “The Brasserie”. Every appetite finds the perfect complement inside this fresh and contemporary all-day dining paradise. Live cooking ensures a la minute freshness and our chefs exercise fabulous expertise in Japanese, Chinese, Indian, and other cuisines.

Total Seats: 128

*ORCHID
LOUNGE*

ORCHID LOUNGE

OPEN DAILY 7:00 am – midnight



Serves Asian and international comfort food, lip-smacking light meals and beverages.

Total Seats: 64



HARI'S BAR

OPEN DAILY

4:00 pm – 1:00 am



Hari's Bar provides an inviting ambiance to unwind after a long day, featuring a thoughtfully curated selection of alcoholic and non-alcoholic beverages. Renowned for its exquisite cocktails, the bar also offers an extensive menu of fine drinks, flavorful appetizers, and savory snacks. Adding to the experience, live entertainment sets the perfect mood for an enjoyable and memorable evening.

Total Seats: 59

THE BAKERY

THE BAKERY

OPEN DAILY 7:00 am - 8:00 pm



Luring you in with the aroma of baked bread, the extensive selection at The Bakery features oven-fresh cakes and pastries. The Bakery also features monthly special promotions inspired by different sweet ingredients. Cheesecakes, tiramisu cakes, croissants, and tarts are just some of the sugary delights you'll discover here.



AQUA TERRAZA
Pool Bar

AQUA TERRAZA POOL BAR

OPEN DAILY

11:00 AM – 8:00 PM (Sun-Wed)

11:00 AM - 11:00 PM (Thu-Sat)



Unwind by the pool, sip on refreshing drinks, and treat yourself to a delicious menu of light snacks and beverages. Your perfect poolside escape awaits at Aqua Terraza pool Bar.

Total Seats: 36

MEETINGS & EVENTS



CRYSTAL BALLROOM

Located on the Lobby level, the 355 sqm. Crystal Ballroom features flexible space, vaulted ceilings and wall-to-wall windows.

It accommodates up to 350 persons for a cocktail reception.



SILOM BALLROOM

The 966 square-meter Silom Ballroom, with its modern, sophisticated décor, can be divided into 3 rooms and accommodate up to 650 persons for a cocktail reception.



EMERALD ROOM

The Emerald Room can host up to 200 guests theatre style, and 130 conference style, in a stylishly minimalist atmosphere. One of the top choices for meetings and receptions, it can also be cleverly partitioned into three smaller soundproof function rooms for greater usability; Emerald I, II and III.



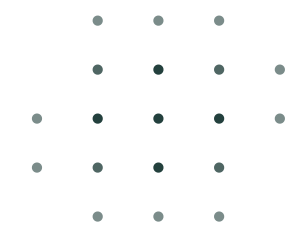
TOPAZ ROOM

Designed for smaller applications that typically see increased face-to-face interactions, the Topaz Room is suitable for meetings, boardroom discussions, training sessions, project proposals and the like.



DIAMOND ROOM & TERRACE

A fresh, exciting event space complete with an indoor area, the Diamond Room & Terrace makes great use of natural light. It also has a cool, sleek terrace with curved roof, which is not only practical, but provides a nice dose of visual flair too. Ideal for cocktail events, buffets or even banquets, the space combines convent garden charm with more than a helping of character normally discerned at stately homes.

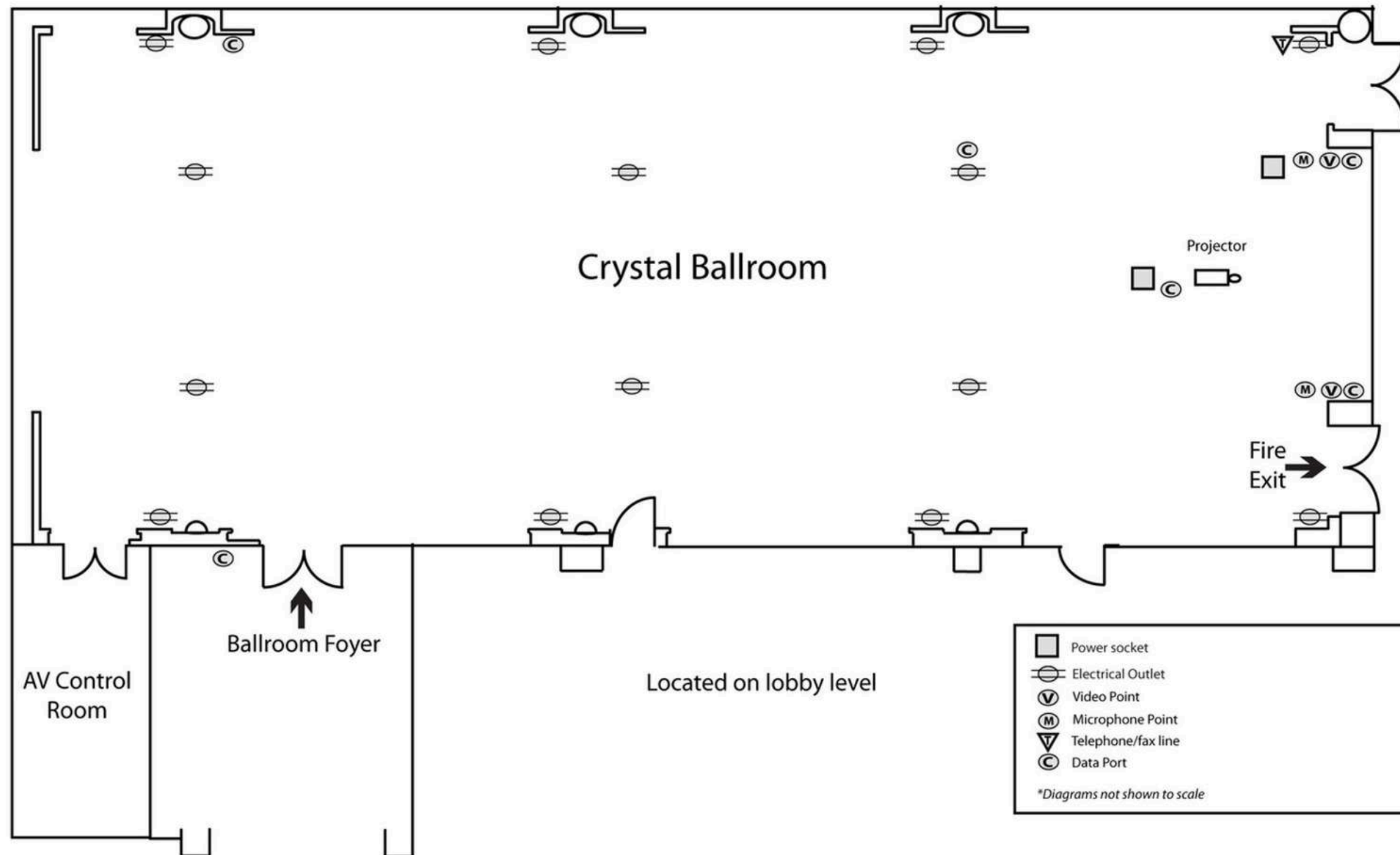


MEETING CAPACITY AND DIMENSIONS

Function Rooms	Area (m2)	Dimension (m) L/W/H	Boardroom	U-Shape	Classroom	Theater	Cocktail	Buffet	Banquet
Crystal Ballroom	308	28 / 11 / 4.5	100	80	200	350	350	200	250
Crystal Ballroom Foyer	38.5	7 / 5.5 / 4	-	-	-	-	-	-	-
Emerald Room	378	36 / 10.5 / 2.4	90	75	110	230	150	120	150
Emerald Room I	126	12 / 10.5 / 2.4	30	25	30	70	50	40	50
Emerald Room II	126	12 / 10.5 / 2.4	30	25	30	70	50	40	50
Emerald Room III	126	12 / 10.5 / 2.4	30	25	30	70	50	40	50
Topaz Room	31.5	7 / 4.5 / 2.4	12	-	-	-	-	-	-
Silom Ballroom	966	46 / 21 / 3	100	-	350	600	700	500	550
Silom Ballroom I	420	20 / 21 / 3	60	50	120	250	200	120	150
Silom Ballroom II	169	13 / 13 / 3	30	25	70	120	80	50	60
Silom Ballroom III	208	13 / 16 / 3	30	25	70	150	100	60	70
Silom Foyer	156	26 / 6 / 3	-	-	-	-	-	-	-
Pre - Function Area	52.5	7 / 7.5 / 2	-	-	-	-	-	-	-
Diamond Room & Terrace	514	-	-	-	-	-	-	-	-
Diamond Room	210	30 / 7 / 3	25	-	-	50	100	80	80
Diamond Terrace	304	32 / 9.5 / 4.5	-	-	-	-	150	15	120

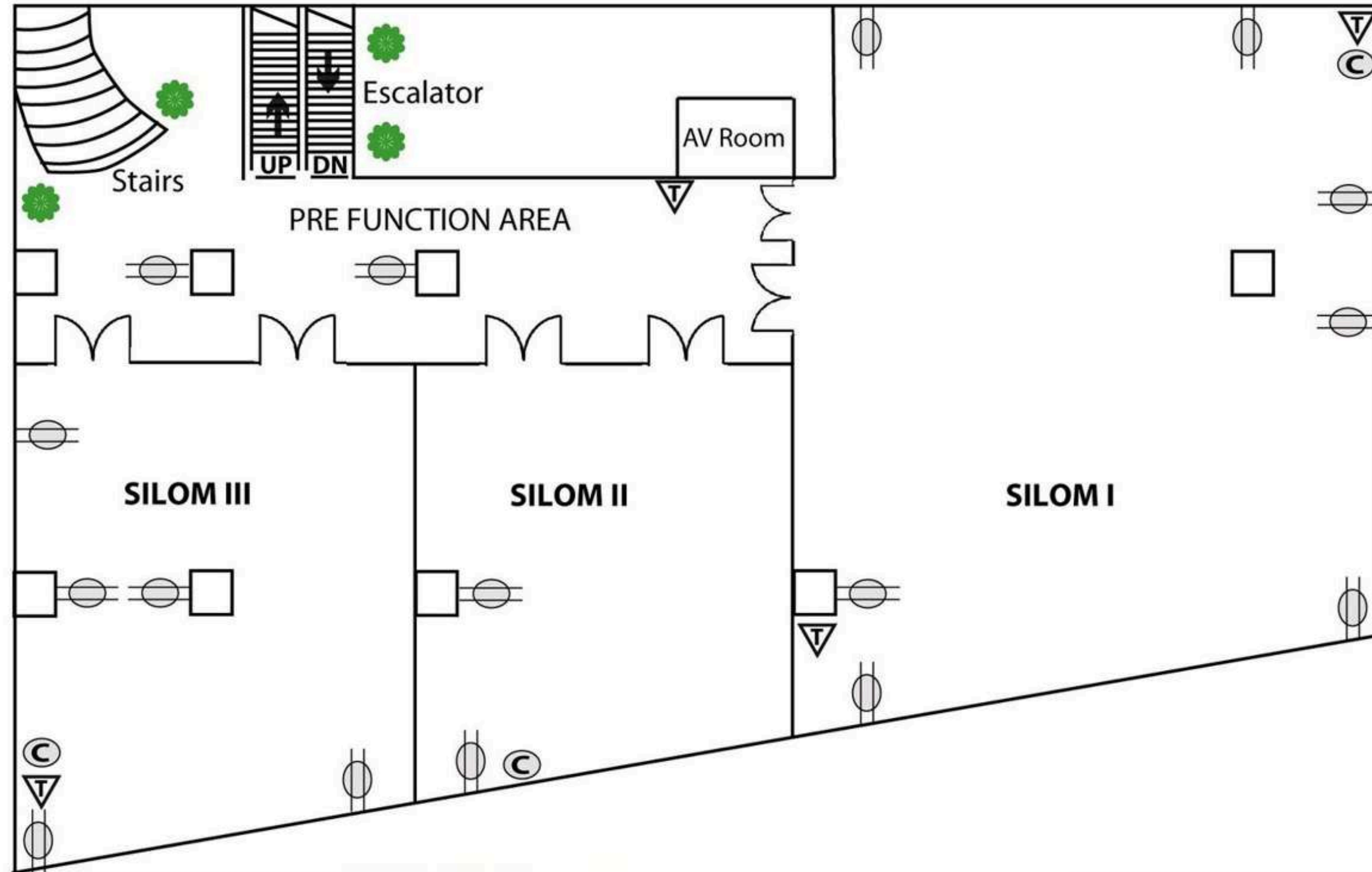
MEETING ROOM FLOOR PLAN

▶ Crystal Room, Lobby Floor



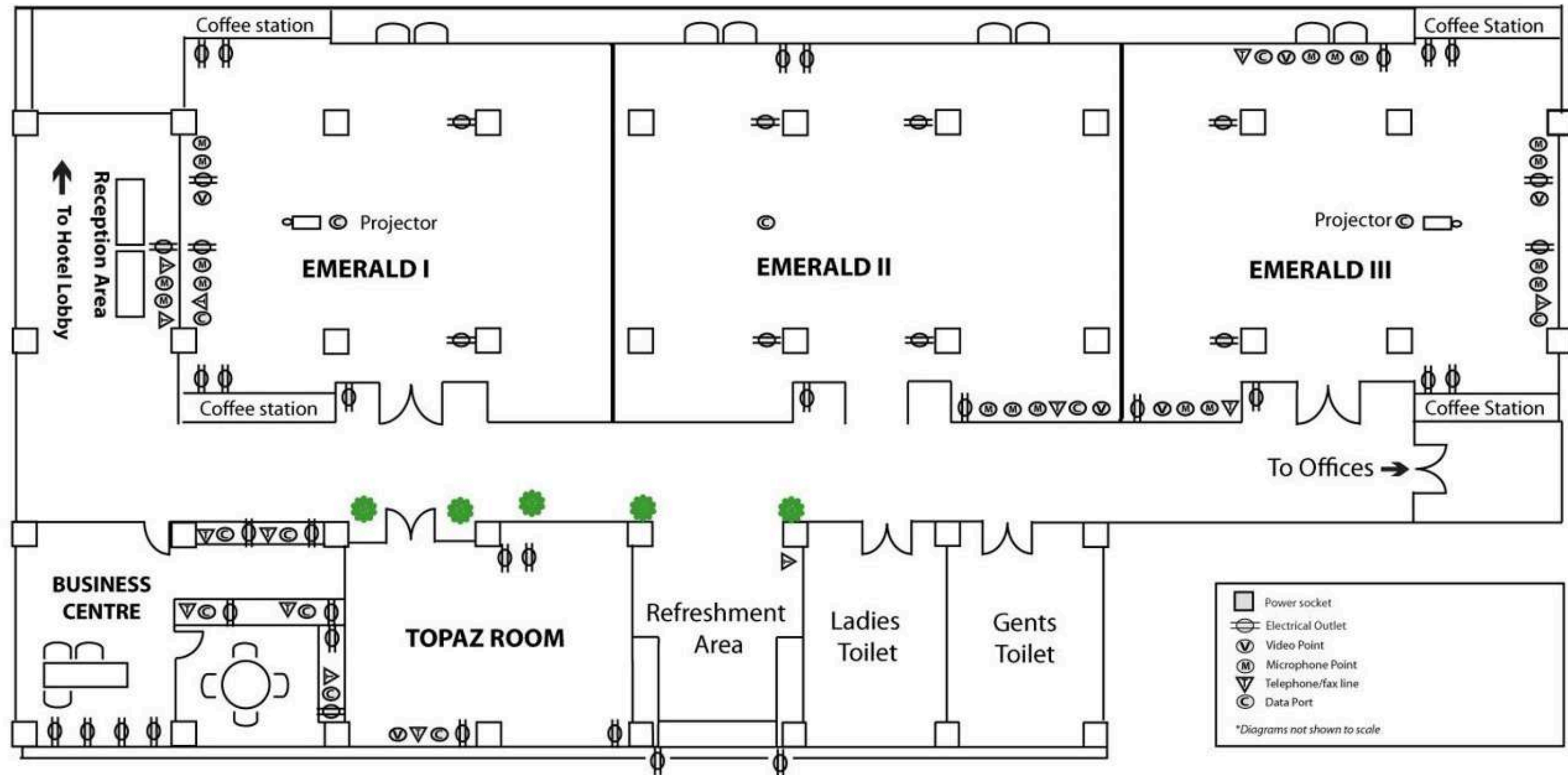
MEETING ROOM FLOOR PLAN

► Silom Ballroom, Ground Floor



MEETING ROOM FLOOR PLAN

► Emerald Room and Topaz Room, Lobby Floor



HOTEL SHOPPING ARCADE



Nadimos
Lebanese Restaurant



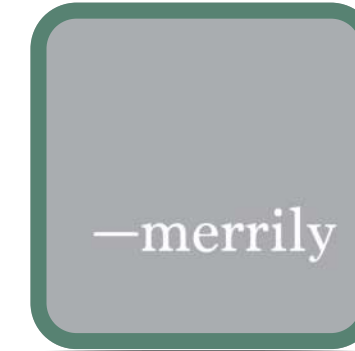
Mustmeat
The Butcher Restaurant



Revolucion
Cocktail bar



Homie
Bar & Restaurant



Merrily
Beauty, Cosmetic
and personal care



Balmy
Nails and Spa



Forever Beauty
Spa



Sukawdee
Beauty and Massage



CALMY CORNER
Head Spa and Salon



Global Doctor
Clinic



Money Exchange



Parich Gems
Gems and Jewelry



Greenhouse
Jewelry Packaging



Sirena
Women Shoes

NEARBY ATTRACTIONS

Tsuruha Drug Store

1st Floor, Holiday Inn
Bangkok Silom



Exta Plus Pharmacy

1 Minute Walk



Tops Market

2 Minutes Walk



Central Bangrak

9 Minutes Walk



7-Eleven Convenience Store

1 Minute Walk



Bangkok Fashion Outlet

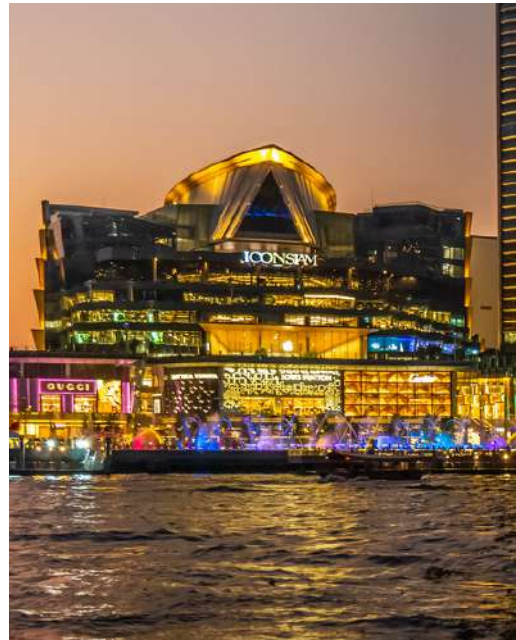
3 Minutes Walk



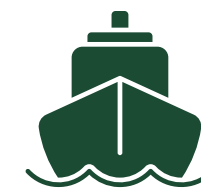
Sri Maha Mariamman Temple (Hindu Temple)

5 Minutes Walk

NEARBY TOURIST ATTRACTIONS



- Sri Maha Mariamman Temple
- Patpong Night Market



- Floating Market
- Grand Palace
- Royal Barge Museum
- Flower Market
- ICONSIAM
- Asiatique The Riverfront



- Siam Paragon
- Central World
- MBK Center
- Jatujak Weekend Market
- National Stadium



- Queen Sirikit National Convention Center (QSNCC)
- Bangkok Railway Station
- Sukhumvit Area



AWARDS



ISO 22000

BUREAU VERITAS
Certification



ISO 14001

BUREAU VERITAS
Certification



- ASEAN MICE Venue Standard by TCEB
- Thailand MICE Venue Standard by TCEB

- Thailand Sustainable event Management Standard (TSEM)
- 2 HY Hybrid & Hygiene MICE Venue

- ISO 22000 : 2005
HACCP CODEX Alimentarius
GMP
- ISO 14001 : 2015
- OHSAS 18001 : 2007

CONTACT US



Holiday Inn Bangkok Silom



holidayinnbangkoksilom



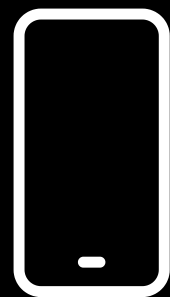
@holidayinnsilom



@holidayinnbangkoksilom



@Hi_Silom



SCAN
ME!

