



**THE LAGUNA
RESORT & SPA
NUSA DUA, BALI**



Accolades

Condé Nast Traveler

Readers' Choice Awards 2022
#18 Best Resorts in the World
#3 Best Resorts in Indonesia



Travel + Leisure

Top 500 Hotels in the World
Asia's Best Awards - #2 Best Beach Resort in Indonesia

Travel + Leisure

Luxury Awards Asia Pacific 2023
Best Hotel General Managers in Indonesia 2023
#4 Lucia Liu, The Laguna, a Luxury Collection Resort & Spa, Nusa Dua, Bali

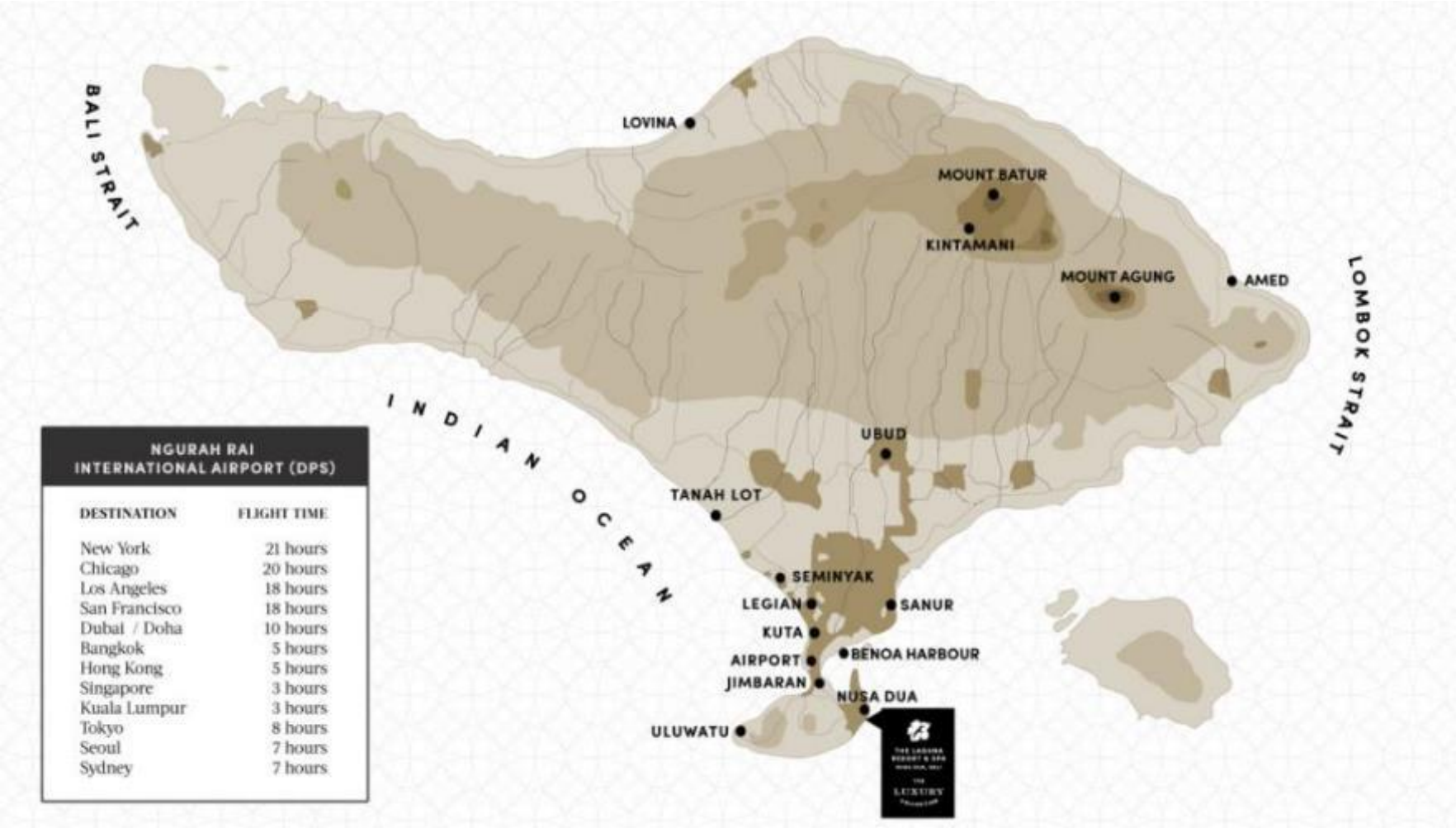




RESORT OVERVIEW

BALI

Situated only 14 km from the Ngurah Rai International Airport, in the tranquil bay of Nusa Dua, the iconic resort is renowned for its enchanting beachfront location and 5000sqm of swimmable lagoons surrounded by radiant tropical gardens.



LAGUNA TIMELINE

1991

Inaugurated under the name Sheraton Lagoon Resort Bali by ITT Sheraton

1993

Changed to Sheraton Laguna based on the government's policy

1997

Starwood Hotels & Resorts Worldwide took over ITT Sheraton

2006

Sheraton Laguna Nusa Dua changed its name to The Laguna Resort & Spa purely to The Luxury Collection from Starwood Hotels & Resort

2008

New logo with name: The Laguna, a Luxury Collection Resort & Spa Nusa Dua, Bali

2016

Marriott International completes acquisition of Starwood Hotels & Resorts

2021

30th anniversary of The Laguna, a Luxury Collection Resort & Spa

2023

Transformation journey

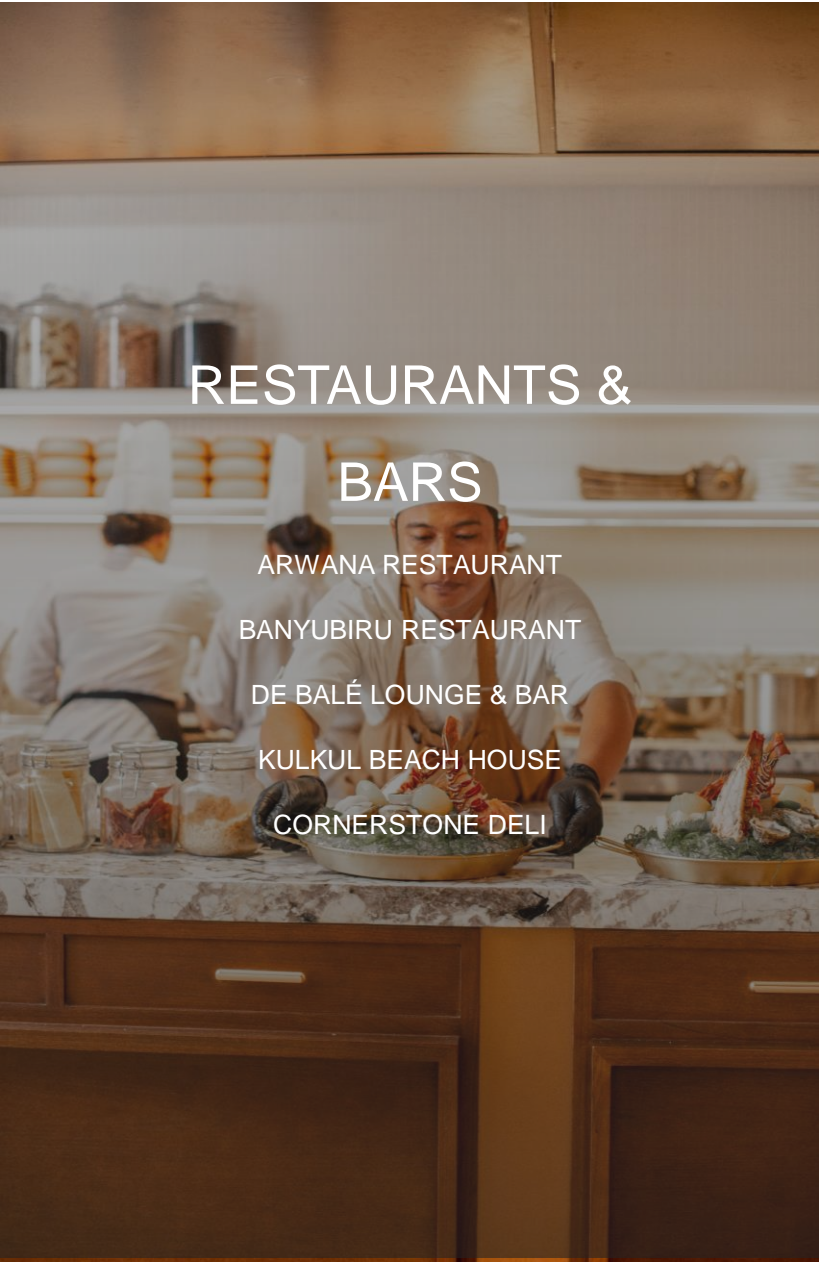
RESORT MAP





ALLURING ACCOMMODATIONS

257 GUESTROOMS
19 SUITES
11 VILLAS



RESTAURANTS & BARS

ARWANA RESTAURANT
BANYUBIRU RESTAURANT
DE BALÉ LOUNGE & BAR
KULKUL BEACH HOUSE
CORNERSTONE DELI



RESORT FACILITIES

SPA & FITNESS CENTER
OVER 5,000 SQM TURQUOISE BLUE LAGOON
CHILDREN'S POOL
MEETING & EVENT VENUES



THE NEWLY TRANSFORMED LAGUNA

LOBBY RECEPTION AREA AT THE LAGUNA, A LUXURY COLLECTION RESORT & SPA

TRANSFORMATIONAL JOURNEY

Laguna, which means lagoon in Indonesian, was what inspired the name – The Laguna, a Luxury Collection Resort & Spa. The resort boasts 7 crystalline lagoons pools, the biggest pool in Nusa Dua when it first opened in 1991. In perfect harmony with lush tropical gardens and pristine beach, the resort's design and ambiance ties in with its surroundings of water, nature and indigenous culture.

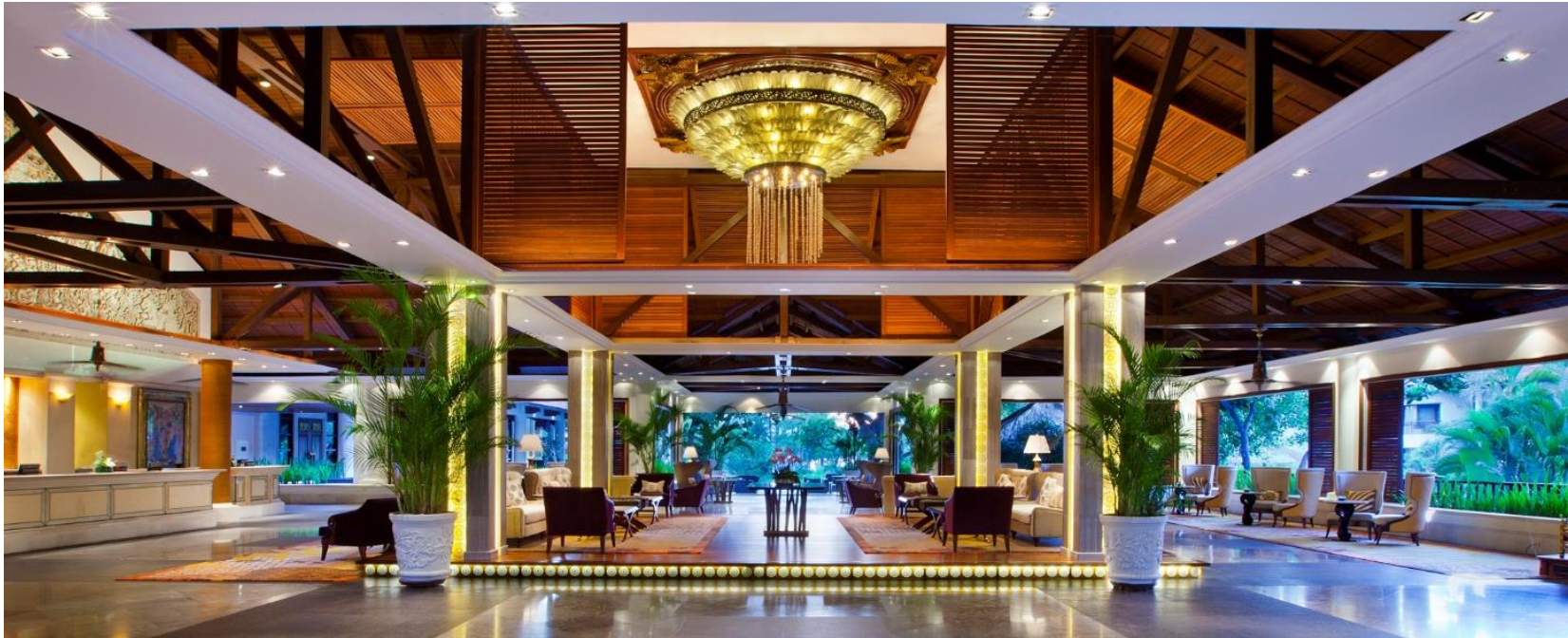
The transformational journey of The Laguna, a Luxury Collection Resort & Spa has gracefully blend past, present, and future to create a destination that is timeless and authentic. Through this transformation, The Laguna will see enhancements made to its 287 rooms, suites and villas, restaurants, and other facilities. Guests senses are evoked with anticipation for what lies ahead during their stay, a luxury and timeless experience.





NEW ARRIVAL EXPERIENCE

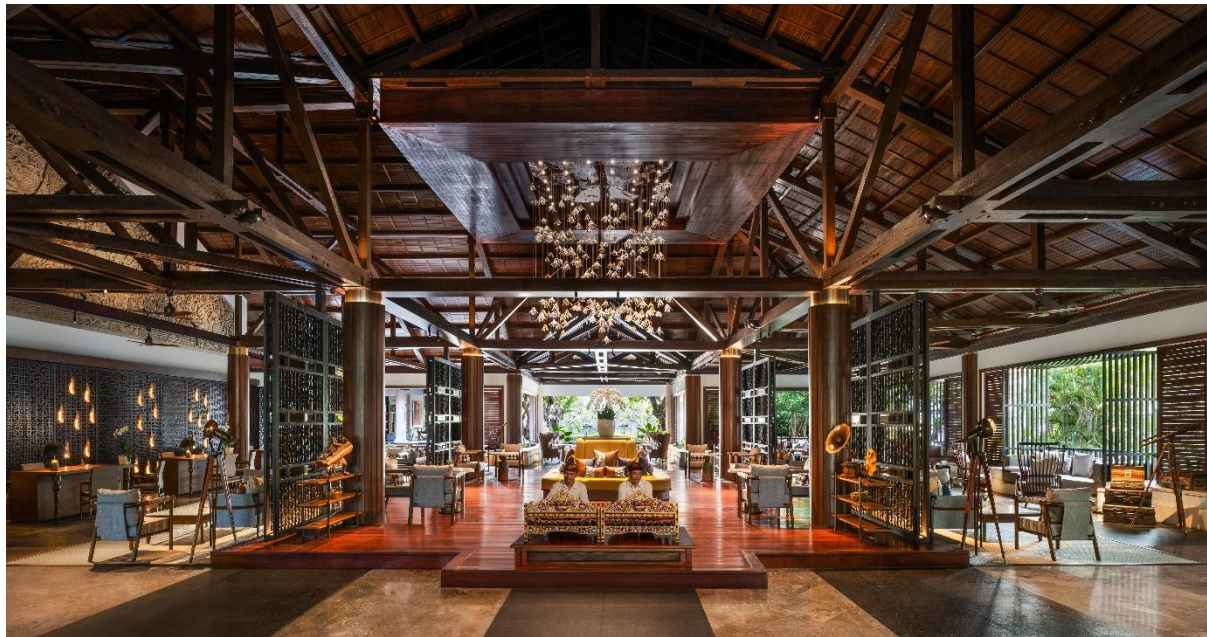
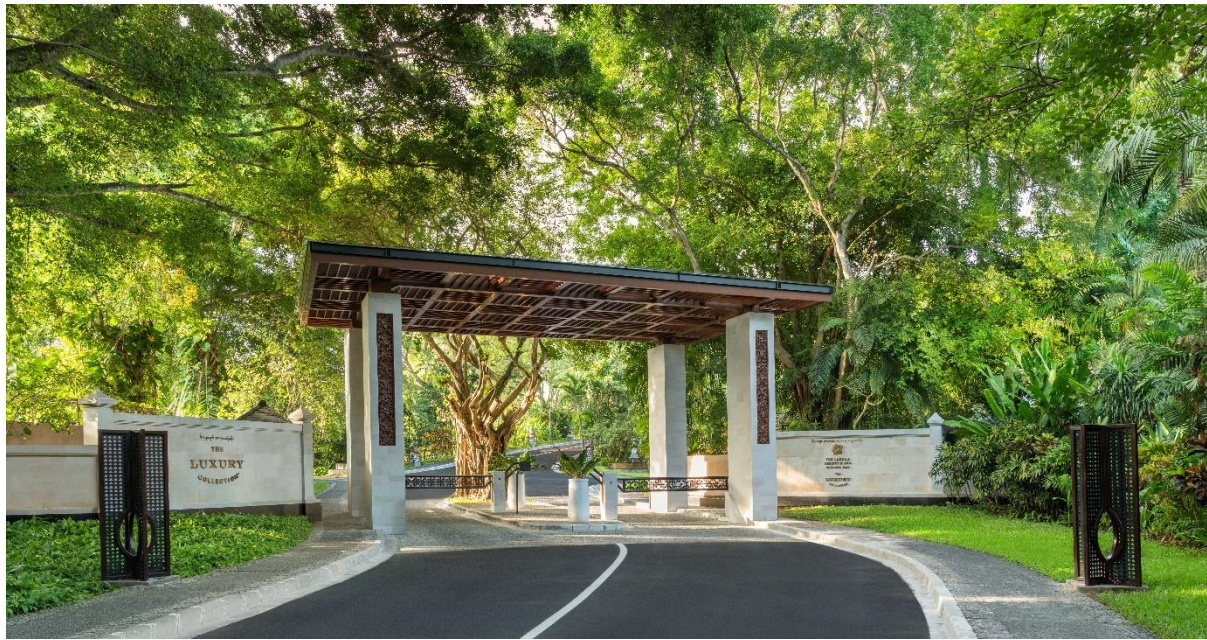
PORTE COCHERE AT THE LAGUNA, A LUXURY COLLECTION RESORT & SPA



Before



After





ROOM CATEGORIES

DELUXE ROOMS	NO. OF ROOMS
Deluxe Garden View	56
Deluxe Lagoon View	116
Deluxe Studio	37
Deluxe Lagoon Access	39
Deluxe Studio Lagoon Access	9
SUITES	NO. OF ROOMS
Executive Suite	13
Lagoon Suite	2
Deluxe Executive Suite	1
Ocean View Suite	2
Imperial Suite	1
VILLAS	NO. OF ROOMS
Hibiscus Villa	1
One-Bedroom Villa	8
Two-Bedroom Villa	2



THE NEWLY TRANSFORMED LAGUNA

ROOM DESIGN INSPIRATION

BALINESE

The main feature of the headboard is a panel of Balinese 'sulaman' embroidery seen in kebaya fabric is evident from the color tone and materials in the room.



NAUTICAL

The story of the lagoon and the nautical experiences around it are celebrated in the room design, with details that conjure memories of nautical experiences, evident in the bespoke selection of lamps and shiplap walls.

TRAVEL

Design details such as the leather detailing of a suitcase next to the bed pay homage to travel and discovery, part of the DNA of the Luxury Collection.



DELUXE GARDEN VIEW / DELUXE LAGOON VIEW / DELUXE LAGOON ACCESS

(36 SQ M | 388 SQ FT)



Before



After

DELUXE STUDIO / DELUXE STUDIO LAGOON ACCESS

(48 SQ M | 517 SQ FT)



Before



After

EXECUTIVE SUITE / LAGOON ACCESS SUITE

(60 SQ M | 646 SQ FT)



Bedroom -
before

Bedroom - after

EXECUTIVE SUITE / LAGOON ACCESS SUITE

(60 SQ M | 646 SQ FT)



Living room -
before

20 THE LUXURY COLLECTION



Living room -
after

DELUXE EXECUTIVE SUITE

(120 SQ M | 1291 SQ FT)



Bedroom - before



Bedroom - after

DELUXE EXECUTIVE SUITE

(120 SQ M | 1291 SQ FT)



Livingroom -
before
22 THE LUXURY COLLECTION



Livingroom -
after

OCEAN VIEW SUITE

(158 SQ M | 1,700 SQ FT)



Living room - before



Living room - after

OCEAN VIEW SUITE

(158 SQ M | 1,700 SQ FT)



Bedroom - before



Bedroom - after

IMPERIAL SUITE

(390 SQ M | 4,198 SQ FT)



Bedroom - before



Bedroom - after

IMPERIAL SUITE

(390 SQ M | 4,198 SQ FT)



Living room - before



Living room - after



THE LAGUNA POOL VILLA – ONE-BEDROOM

(530 SQ M | 5,704 SQ FT)



Bedroom - before



Bedroom - after

THE LAGUNA POOL VILLA – ONE-BEDROOM

(530 SQ M | 5,704 SQ FT)



THE LAGUNA POOL VILLA – TWO-BEDROOM

(850 SQ M | 9,149 SQ FT)



Bedroom - before



Bedroom - after

THE LAGUNA POOL VILLA – TWO-BEDROOM

(850 SQ M | 9,149 SQ FT)



Living room - before



Living room - after

THE LAGUNA POOL VILLA – TWO-BEDROOM

(850 SQ M | 9,149 SQ FT)



A wide-angle photograph of a tropical resort. In the foreground, a calm swimming pool reflects the surrounding palm trees and sky. To the left, a small thatched-roof hut with white curtains sits on a grassy area. Several lounge chairs are scattered on the lawn. The background is filled with a dense forest of tall palm trees under a clear blue sky. The overall atmosphere is serene and luxurious.

RESTAURANTS & BARS



A R W A N A

ARWANA RESTAURANT

Arwana is a lively and transitional grill beachfront restaurant with a distinctly modern and inviting nautical ambiance. Arwana transitions during the day from a laid-back boathouse to an exclusive, high-energy restaurant at night. An imaginative menu is presented with flair, engaging guests in a journey that lasts throughout the entire dining experience. At the forefront of our show kitchen are our Basque grills, flaming up the best seafood and dry-aged cuts of meat, truly delivering an unexpected beachfront experience.





BANYUBIRU RESTAURANT

Located in the heart of the resort overlooking the turquoise lagoon, Banyubiru features western and pan-Asian buffet, with an extensive à la carte menu.







KULKUL BEACH HOUSE

Kulkul, a chic yet laid-back beach house, has newly reopened daily from 10 AM to 11 PM, offering best views to the Indian Ocean on the exotic Nusa Dua Beach. Kulkul provides a relaxed atmosphere and also offers cabanas by the adult-only swimming pool. The all-day menu and cocktails focus on zero-waste dining and inventive menus made with locally sourced ingredients. Encouraging guests to lounge around all day and evening, Kulkul is the perfect destination to experience Bali's serene spirit by the beach.





DE BALÉ LOUNGE & BAR

A theatrical and mystical cocktail bar inspired by centuries of oceanic spice trade. At the bar, surrounded by a lively green atmosphere, it serves fresh spice-infused spirits and cocktails crafted with a large diversity of spices and herbs.





CORNERSTONE DELI

The Cornerstone Deli offers unique al fresco dining in Bali, highlighting daily specialties, homemade treats and a traditional sambal corner.





LAGOON SPA

Blending intricate local rituals with effortless Balinese grace,
the Lagoon Spa offers a serene retreat for the mind, body and
soul. A fitness center is located adjacent to the spa.

LAGOON SPA LOUNGE | TREATMENT ROOM | FITNESS CENTER





RESORT ACTIVITIES

RESORT ACTIVITIES SCHEDULE

MONDAY	ACTIVITIES	MEETING POINTS
8.00 – 8.45	Total Body Workout**	Fitness Center
10.00 – 10.30	Paper Weaving Creation****	Recreation Counter
12.00 – 12.30	Mini Massage	Lagoon Spa
15.00 – 15.45	Treasure Hunt****	Recreation Counter

TUESDAY	ACTIVITIES	MEETING POINTS
7.00 – 7.45	Sunrise Yoga	Temple Garden
10.00 – 10.45	Natural Batik Printing****	Recreation Counter
11.00 – 11.45	Water Volleyball	Main Pool
15.00 – 15.45	Bead Bracelet ****	Recreation Counter

WEDNESDAY	ACTIVITIES	MEETING POINTS
8.00 – 8.20	Core Exercise **	Fitness Center
10.00 – 10.45	Paper Mask Making****	Recreation Counter
12.00 – 12.30	Mini Massage	Lagoon Spa
15.00 – 15.45	Recycle Creation****	Recreation Counter
16.00 – 17.00	Nyurat Lontar	Recreation Counter

THURSDAY	ACTIVITIES	MEETING POINTS
8.00 – 8.45	Circuit Training **	Fitness Center
11.00 – 11.45	Offering Making and Hotel Temple Visit *	Recreation Counter
15.00 – 15.45	Traditional Kite Making****	Recreation Counter
16.00 – 16.45	Simple Wood Carving	Recreation Counter

FRIDAY	ACTIVITIES	MEETING POINTS
8.00 – 8.20	Core Exercise **	Fitness Center
10.00 – 10.45	Clay Bottle Bank Painting****	Recreation Counter
15.00 – 15.45	Fruit Carving Demonstration *	Recreation Counter
16.00 – 17.00	Water Volleyball	Main Pool

SATURDAY	ACTIVITIES	MEETING POINTS
7.00 – 7.45	Sunrise Yoga	Temple Garden
10.00 – 10.45	Bekel Games****	Recreation Counter
12.00 – 12.30	Mini Massage	Lagoon Spa
15.00 – 15.45	Traditional Kite Making****	Recreation Counter

SUNDAY	ACTIVITIES	MEETING POINTS
8.00 – 8.45	Circuit Training **	Fitness Center
10.00 – 10.45	Bead Bracelet****	Recreation Counter
11.00 – 11.45	Balinese Dress Up **	Recreation Counter
15.00 – 16.00	Balinese Hat Making *	Recreation Counter

Changeable activities that require one day in advance reservation:

- * Private Yoga Session
- * Personal Trainer

- * Children 7 years old and above are welcome to join.
- ** Maximum 6 persons.
One day in advance reservation is required.
- *** Weather permitting activity, maximum 12 persons.
One day in advance reservation is required.
- **** Dedicated activity for children

**FOR RESERVATIONS, PLEASE CALL SPA CONCIERGE AT '5587'
OR EMAIL TO LAGOOONSPA.BALI@LUXURYCOLLECTION.COM**

THE LAGUNA, A LUXURY COLLECTION RESORT & SPA, NUSA DUA, BALI
KAWASAN PARIWISATA NUSA DUA LOT N2, PO BOX 77 NUSA DUA, BALI, 80363, INDONESIA
T 62 361 771327 – F 62 361 771326

THELAGUNABALI.COM



YOUNG GLOBAL EXPLORER ACTIVITIES

Discover a fun-filled holiday with your loved ones at The Laguna Resort & Spa, Bali as we invite Young Global Explorers to embark in a selection of personalized recreational activities curated by our trained and knowledgeable Educators.

YOUNG GLOBAL EXPLORER ACTIVITIES SCHEDULE

MONDAY	ACTIVITIES	MEETING POINTS
10.00 – 10.30	Paper Weaving Creation	Recreation Counter
15.00 – 15.45	Treasure Hunt	Recreation Counter

TUESDAY	ACTIVITIES	MEETING POINTS
10.00 – 10.45	Eco Natural Batik Printing	Recreation Counter
15.00 – 15.45	Bead Bracelet	Recreation Counter

WEDNESDAY	ACTIVITIES	MEETING POINTS
10.00 – 10.45	Paper Mask Making	Recreation Counter
15.00 – 15.45	Clay Bottle Bank Painting	Recreation Counter

THURSDAY	ACTIVITIES	MEETING POINTS
11.00 – 11.45	Offering Making and Hotel Temple Visit	Recreation Counter
15.00 – 15.45	Traditional Kite Making	Recreation Counter

FRIDAY	ACTIVITIES	MEETING POINTS
10.00 – 10.45	Clay Bottle Bank Painting	Recreation Counter
15.00 – 15.45	Fruit Carving Demonstration	Recreation Counter

SATURDAY	ACTIVITIES	MEETING POINTS
15.00 – 15.45	Traditional Kite Making	Recreation Counter
19.00 – 20.15	Movie Under the Stars	Temple Garden

SUNDAY	ACTIVITIES	MEETING POINTS
10.00 – 10.45	Bead Bracelet	Recreation Counter
16.00 – 17.00	Table Tennis Games	Recreation Counter

**FOR RESERVATIONS, PLEASE CALL SPA CONCIERGE AT 5587
OR EMAIL TO LAGOOONSPA.BALI@LUXURYCOLLECTION.COM**

THE LAGUNA,
A LUXURY COLLECTION RESORT & SPA, NUSA DUA, BALI
KAWASAN PARIWISATA NUSA DUA LOT N2, PO BOX 77 NUSA DUA, BALI, 80363, INDONESIA
T 62 361 771327 — F 62 361 771326
THELAGUNABALI.COM

A photograph showing a man, a woman, and a local craftsman working together on a traditional Balinese wooden structure, possibly a part of a gamelan or a decorative piece. The man and woman are standing and looking down at the work, while the craftsman is seated and focused on his task. The setting is a well-lit, modern interior with large windows and contemporary furniture in the background.

LUXURY COLLECTION BRAND IDENTITY

DESTINATION DISCOVERY

Enjoy an insight into Balinese culture within the resort as The Laguna Resort & Spa presents a concierge curated program: The Destination Discovery Tour. Our concierge will share stories from Balinese culture and explain various architectural aspects of the resort, conveying Bali's history.



DAILY EPICUREAN MOMENT
JAMU RITUAL

The Laguna offers a daily epicurean journey in the mystical cocktail bar, de Balé. Jamu Ritual at The Laguna is available daily at 5:30 PM.



WEEKLY EPICUREAN MOMENT
**BALINESE BLESSING CEREMONY AND
BUFFET DINNER**

BANYUBIRU RESTAURANT, EVERY THURSDAY,
6:00 PM – 10:00 PM

Immerse yourself in an authentic Balinese evening. The enriching journey commences with a Destination Discovery hosted by The Luxury Collection Concierge. Enjoy the Jamu Ritual and be entertained by the Ramayana Theatrical Performance at de Balé, followed by an indigenous blessing ceremony at the resort's temple garden. A hand-washing ritual precedes the buffet feast that showcases the best of Indonesian and Balinese cuisine, with a rindik and legong dance performance.

IDR 600,000 net per person

Kids Eat Free

Below 12 years old - 2 kids max per family



EPICUREAN JOURNEY

Guest can join our expert chef on a visit to Kedonganan Fish Market, the island's largest source of freshly caught seafood with a scenic view of fishermen's boats. Continued with a hands-on Balinese cooking class and luncheon using very own hand-picked ingredients.

IDR 1,600,000 net per person





MEETING & EVENT VENUES

TEMPLE GARDEN AT THE LAGUNA, A LUXURY COLLECTION RESORT & SPA

BALAI RAYA BALLROOM

SET UP

Theater: 450

Classroom: 360

Banquet: 400

With a meeting space of 722 sqm, the room are divisible into three section, all pillar-less, and features the latest in kinetic mood lighting system as well as a spacious pre-function area.



BALAI DEEPA

SET UP

Boardroom: 12

Surrounded by glass windows overlooking magnificent tropical gardens, Balai Deepa, Natural Day Light boardroom emanates a charming feel and is fully equipped to ensure a smooth running board meeting in an inspiring venue.



BALAI CITRA

SET UP

Theater: 20

Classroom: 12

U-Shape: 15

Featuring a local Balinese “Palimanan” stone ceiling, this meeting space adds a visual appeal and is fully equipped with built-in screen and Wi-Fi connectivity for a seamless experience.



BALAI LOKA

SET UP

Boardroom : 12

The stylish meeting room features parquet flooring and a 42 inch plasma screen providing guests with a sense of added prestige and exclusivity.



BALAI ULU

SET UP

Theater: 90

Classroom: 60

Banquet: 80

With carpeted flooring and surrounded by glass windows overlooking magnificent tropical gardens and the lagoon, Balai Ulu, Natural Day Light meeting room emanates a charming feel.



BALAI NUSA

SET UP

Boardroom : 12

The Balai Nusa Executive Boardroom offers natural daylight and views over the treetops and is fully equipped to ensure a smooth running board meeting in an inspiring venue



MEETING ROOM CAPACITIES

MEETING ROOMS	CAPACITIES						DIMENSIONS		
	U-SHAPE	THEATRE	CLASSROOM	BOARDROOM	BANQUET	STANDING COCKTAIL	LENGTH& WIDTH (M)	TOTAL (SQM)	CEILING HEIGHT (M)
BALAI RAYA A, B, C	168	450	360	84	400	600	38 X 19	722	4.5
BALAI RAYA A	60	130	70	60	120	150	13 X 19	247	4.5
BALAI RAYA B	60	100	60	50	100	120	10 X 19	190	4.5
BALAI RAYA C	70	140	120	70	150	200	15 X 19	285	4.5
BALAI CITRA	15	20	12	10	15	24	7 X 12	84	3.5
BALAI TAMA	-	-	-	10	8	-	5 X 4	22	3.5
BALAI LOKA	-	-	-	12	-	-	7 X 7	49	3.5
BALAI DEEPA	-	-	-	12	-	-	7 X 7	49	2.7
BALAI NUSA	-	-	-	12	-	-	11 X 5	55	3.5
BALAI ULU	30	90	60	30	80	100	13 X 13	169	3.5
BALAI RAYA FOYER	-	-	-	-	-	-	7 X 30	212	3.3



NUSA BAGUS ISLAND

SET UP

Banquet: 70

Reception: 90

An exclusive venue surrounded by water features and offering captivating views of our turquoise lagoon, the Nusa Bagus Island provides a relaxing and soothing backdrop, perfect for welcome receptions.



TEMPLE GARDEN

SET UP

Banquet: 120

Reception: 250

For an enchanting dinner beneath the stars, the Temple Garden with its singular background of a Balinese temple is an ideal venue, allowing guests to immerse in true elements of the island.



ARWANA BEACHFRONT

SET UP

Banquet: 100

Reception: 150

Host the most unforgettable event reception in an unsurpassed beachfront location overlooking the Indian Ocean. This private location can accommodate up to 150 guests.



THANK YOU