



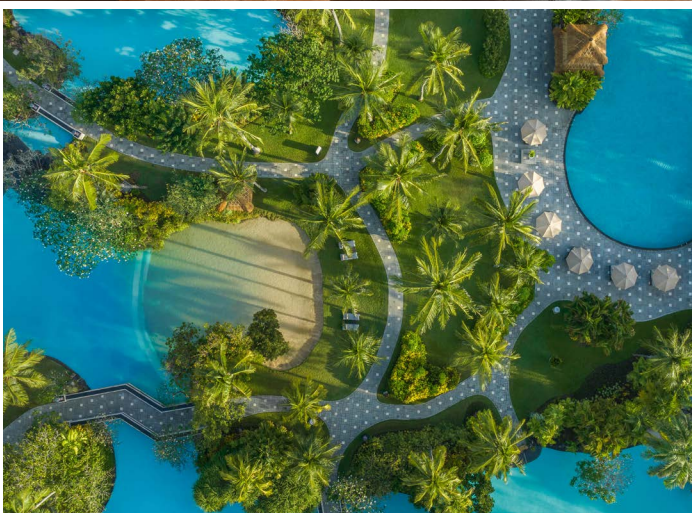
THE LAGUNA
RESORT & SPA
NUSA DUA, BALI

TROPICAL BLISS

AT THE LAGUNA, A LUXURY COLLECTION RESORT & SPA, NUSA DUA, BALI

Bathed in golden sunlight and lapped by the always-warm Indian Ocean, The Laguna now begins a bold new chapter, one that embodies the very best of Bali's arts, history, heritage, cuisine and culture.

However you choose to spend your time, and whether you're here for a big family get-together, a wellness break, a conference or to tie the knot at our beautiful beachside resort, you'll find rooms that set new standards of luxury on the island. All of our accommodations, from comfortable entry-level rooms with balconies, to rambling suites with direct pool access, to our grand villas (some of the largest on the island), invite guests to unwind within a soothing fusion of thoughtful modern design and traditional Balinese arts and crafts.



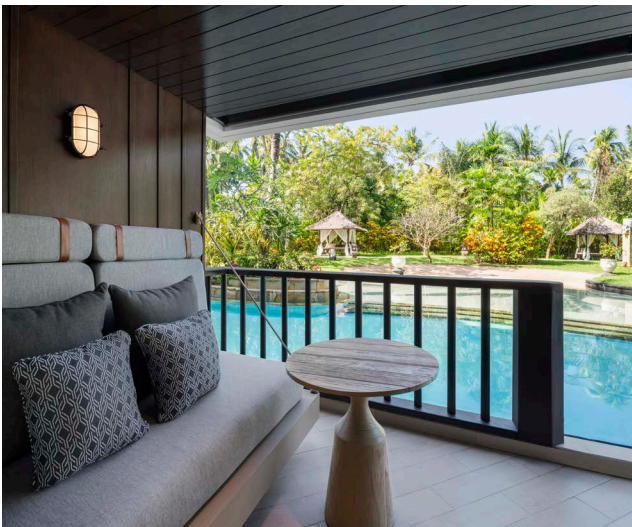
At The Laguna, every spacious bedroom, suite and villa is a sanctuary that tastefully showcases Bali's influence and identity. Traditional décor includes woven keben baskets, typically used to carry offerings at temples, and low-rise dulang tables that carry colourful spreads of local tropical fruits, while specially commissioned artwork pays tribute to the island's arts and crafts.



DELUXE GARDEN VIEW AND DELUXE LAGOON VIEW

Units: 172 (106 King & 66 Twin)
Size: 36 sqm

Overlooking the resort's verdant gardens, Deluxe Garden View rooms are soothing and serene, while The Laguna's Deluxe Lagoon View rooms' point of difference is obvious as soon as you step onto their balconies. Rooms are generously decorated with Balinese handicrafts and come complete with every expected modern amenity.



DELUXE LAGOON ACCESS

Units: 39 (28 King & 11 Twin)
Size: 36 sqm

Ideal for those who love the sun and sea, Deluxe Lagoon Access rooms provide direct access to the resort's lagoons, alongside their loungers and sun pavilions: this is where to stay if you want to swim seconds after you've emerged from sleep.



DELUXE STUDIO

Units: 37 (26 King & 11 Twin)

Size: 48 sqm

Generously sized and a popular choice for longer stays, these rooms overlook either the resort’s lush gardens or its lagoon pools. Interiors blend traditional Balinese décor with modern amenities.



DELUXE STUDIO LAGOON ACCESS

Units: 9 (8 King & 1 Twin)

Size: 48 sqm

Otherwise similar to Deluxe Studio Rooms, this spacious category provides its residents with direct access to the resort’s lagoons, alongside their loungers and sun pavilions. Water lovers will also be pleased to know that beautifully appointed bathrooms feature oversized tubs.

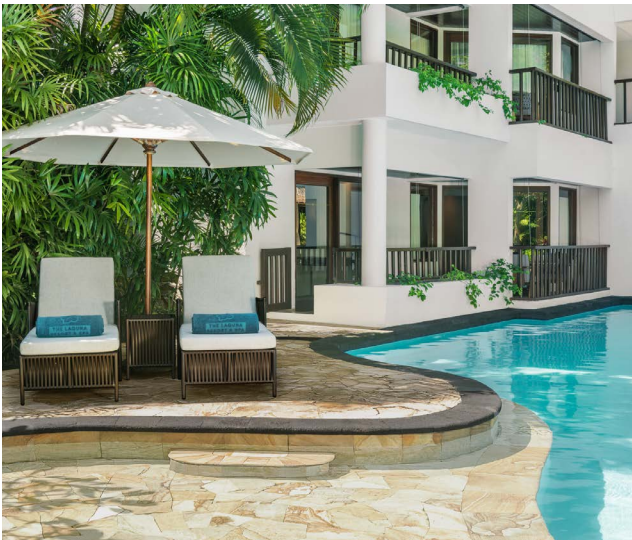


EXECUTIVE SUITE

Units: 13 (13 King)

Size: 60 sqm

A home from home in Bali, each Executive Suite features a separate living room and elegant dining space, alongside a restful bedroom with its own private balcony. Interiors are beautifully finished with Balinese artworks and traditional furniture.



LAGOON ACCESS SUITE

Units: 2 (2 King)

Size: 60 sqm

Each Lagoon Access Suite offers direct access to the resort's lagoons. These generously sized settings also include elegant living rooms and intimate balconies.



DELUXE EXECUTIVE SUITE

Units: 1 (1 King)

Size: 120 sqm

With magnificent views over the lagoon and so much space to spare, this one-of-a-kind suite is a firm favorite with long-stay guests. It features a standalone living room, elegant dining space, and its inviting bedroom offers a large private balcony.



OCEAN VIEW SUITE

Units: 2 (2 King)

Size: 158 sqm

A modern duplex suite, this tasteful retreat features a superb master bedroom, spacious living, and dining area with adjacent kitchen, alongside every conceivable modern amenity. Nonetheless, its most beautiful feature is the hypnotizing view it offers of the sea.



IMPERIAL SUITE

Units: 1 (1 King & Twin)
Size: 390 sqm

This lavish two-bedroom suite makes a superlative setting for special-occasion stays. Sleeping four in unsurpassed comfort, the vast duplex property with its own kitchen and dining room is finished impeccably with exceptional pieces of antique Balinese art and traditional furniture. Its crowning glory is its stylish living room, complete with grand piano, which opens onto an elegant sun terrace and provides direct access to the suite's own private lagoon pool.



THE LAGUNA POOL VILLA ONE-BEDROOM

Units: 8 (8 King)

Size: 530 sqm

Among the most extravagant and exclusive villas in all of Bali, these immense hideaways are immaculately decorated with exceptional Balinese art and best-in-class modern amenities. A generously sized private pool and tranquil gardens abundant with frangipani and other tropical blossoms allow for serene outdoor living, while guests can also access a private stretch of beach available only to villa residents. With a butler on standby, it's possible to arrange private dinners on site - the villa includes a modern kitchen and dining space - alongside in-villa spa treatments.



THE LAGUNA POOL VILLA TWO-BEDROOM

Units: 2 (2 King & Twin)
Size: 850 sqm

Unparalleled in size, this villa extends over a seemingly endless array of beautifully attired rooms that offer every conceivable comfort and amenity. It comprises of a grand master bedroom and a twin bedroom, both en-suite, as well as a huge living and dining area opening directly onto the expansive tropical garden terrace, with its dining table and gazebo.

The generously sized private pool is flanked by loungers, perfect for lazy days spent swimming, sunbathing and reading. Exceptional examples of Balinese art and furniture are found throughout; full catering facilities are on hand for guests who would like to host an in-villa dinner party; a butler is on standby to help with every eventuality; and the villa residents' private stretch of beach is reached in moments by buggy.

IMMERSIVE CULINARY EXPERIENCE



ARWANA RESTAURANT

Arwana is a lively and transitional grill beachfront-grill restaurant with a distinctly modern and inviting nautical ambiance. At the forefront of our show kitchen are our Basque grills, flaming up the best seafood and dry-aged cuts of meat, truly delivering an unexpected beachfront experience.



BANYUBIRU RESTAURANT

Begin your day in Bali at Banyubiru. This delightful buffet restaurant sits beside one of our inviting lagoon pools and offers a gourmet breakfast buffet and decadent weekly themed dinner.



KULKUL BEACH HOUSE

Soundtracked by a mellow mix of house and Mediterranean music, Kulkul Beach House returns to Nusa Dua's white sand shores as an idyllic social setting tailor-made for languid days by the beach.



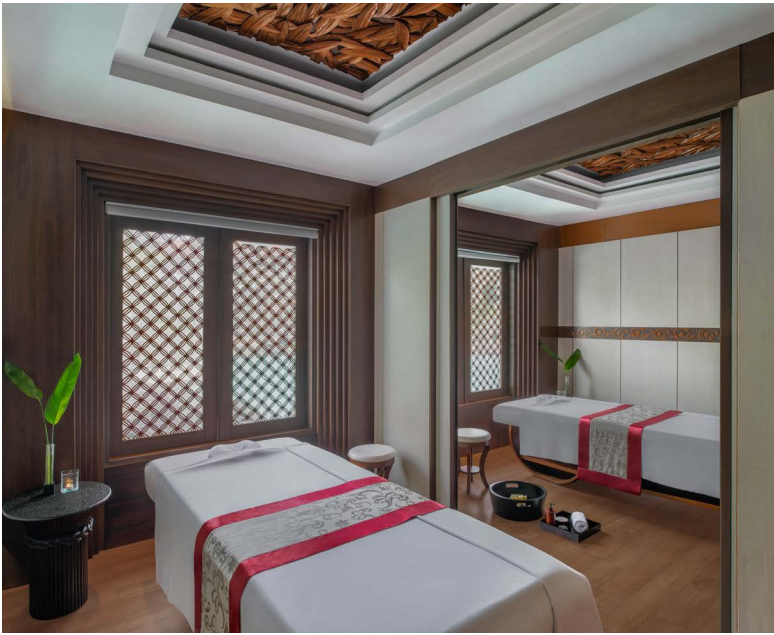
DE BALÉ LOUNGE AND BAR

A theatrical and mystical cocktail bar inspired by centuries of oceanic spice trade. At the bar, surrounded by a lively green atmosphere, it serves fresh spice-infused spirits and cocktails are crafted with a large diversity of spices and herbs.



CORNERSTONE

Cornerstone is an all-day winery, bakery and deli where you can sample and share all the delicious flavours of Bali, freshly baked flaky croissants and rainbow-coloured macarons with a perfectly brewed coffee.



LAGOON SPA

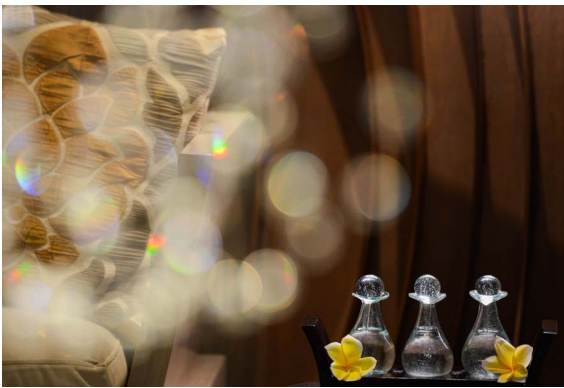
The spa’s design fuses traditional Balinese elements with modern-day flair, featuring warm tonal woods, cool textured granites and flashes of gold, most apparent in the glittering abstract chandelier. Our progressive treatments are carried out by gracious, expert therapists, who are committed to encouraging a deeper connection to health, restoring balance and cultivating calm.

FITNESS CENTER

Complementing the Lagoon Spa is a 24-hour state-of-the-art fitness center offering the latest cardiovascular and strength-training equipment from Life Fitness, as well as exercise bikes, rowing machines and treadmills. Personal trainers are on hand for one-to-one coaching sessions and can even design customized fitness programmes according to your individual needs.

TENNIS COURT

Keep up your game amidst lush tropical gardens. Our experienced tennis coach will show you tips and tricks to improve your strokes in private tennis lessons, or simply be your partner in an exciting rounds of play.



SIGNATURE LAGOON KELAPA RITUAL

Experience a total indulgence with this top-to-toe signature treatment. The ritual includes a soothing coconut milk foot soak and continues with a kelapa body scrub and a traditional Balinese massage using the purest virgin coconut oil.



YOGA

Begin your day with the sunrise yoga in the alluring setting alongside the resort’s shimmering lagoon pool. Meaning union, yoga harmonizes the mind, body, and soul through exercise and breathing.



You're guaranteed to eat and drink wonderfully at The Laguna, a Luxury Collection Resort & Spa, Nusa Dua, Bali where relaxed restaurants and bars with indoor and outdoor seating are enveloped by greenery and so often overlook the immensity of the Indian Ocean. Themed dining events provide even more variety, with a weekly Balinese Cultural Night at Banyubiru offering vibrant immersions into the island's arts and crafts alongside culinary specialties. Those who want to learn more about Bali can join the Laguna's chefs on signature Epicurean Journeys, which tour the bustling Kedonganan Fish Market and include a cookery class. To toast a special anniversary, the Laguna's Romantic Island Dinner invites couples to a starlit meal on a private beach, where they can admire the moon beams' shimmer on the water as they enjoy a specially prepared feast.