



CENTARA KARON RESORT PHUKET

Nestled amidst a lush island hillscape, Centara Karon Resort Phuket unveils an oasis of relaxation and adventure just steps from the stunning Andaman Sea. This newly renovated family resort seamlessly blends contemporary luxury with beachfront elegance, offering a tranquil coastal escape for guests of all ages.

Three distinct zones - The Terrace, Lagoon Wing, and Tropicale Wing - provide unique experiences, from family fun to romantic retreats. With its refreshed design incorporating geometric forms, natural elements, and a vibrant colour palette, the resort invites guests to immerse themselves in sophisticated tropical living. An array of family-friendly accommodation, exceptional dining options, and modern facilities ensure an unforgettable escape for every traveller.



502/3 Patak Road, Karon Beach,
Muang, Phuket 83100, Thailand

centarahotelsresorts.com/ckr

+66 (0) 7639 6200-8

ckr@chr.co.th

ACCOMMODATION

- Indulge in comfort in the spacious rooms of The Terrace featuring balconies with breathtaking sea or mountain views
- Embrace ample living space in the Lagoon Wing, a family-focused zone offering an array of Deluxe options perfect for effortless, family-friendly holidays
- Immerse yourself in the lush surroundings of Tropicale Wing, a relaxing haven designed for couples and romantic escapes

FACILITIES & SERVICES

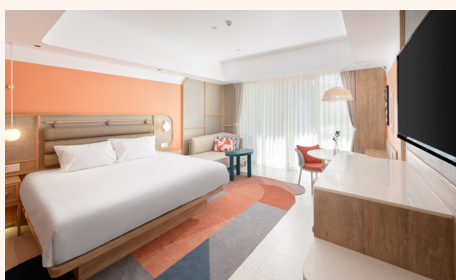
- A pool area of 3,000 square metres with three swimming pools
- Signature SPA Cenvaree offering therapeutic massages
- Fully-equipped fitness centre
- Table tennis, games and activity programmes
- Chang Dee Kids' Club
- Babysitting service available upon request
- Tour desk and airport transfer services
- Broadband and wireless internet access

RESTAURANTS & BARS

- **Bistro Grill & Bar:** a dining venue featuring a selection of international and Thai cuisine, available daily for breakfast and dinner
- **Escape Pool Club:** a dining experience offering a variety of global culinary delights
- **Pink Social:** a daytime coffee lounge to an evening bar, providing an ideal setting for co-working and relaxed socialising.
- **Tropix, Koh Kool, and Splash Deck:** poolside bars serving light fare and refreshing beverages



Location Map



ACCOMMODATION

ROOM FACTS AT A GLANCE		IN-ROOM FEATURES															
ROOM TYPE		Number of rooms	Room size (m ²)	Balcony / terrace size (m ²)	Plunge pool size (m ²)	Total living space (m ²)	Maximum occupancy (AD + CH)	Extra bed capability	Individually controlled air-conditioning	Bathtub	Separate Shower	Minibar	Tea and coffee making facilities	In-room safe	Hairdryer	Satellite TV	Complimentary wireless internet access
Superior City View	King	16	28	3		31	2AD + 1CH										
	Twin	16	28	3		31	2AD + 1CH										
	Double / Double	34	28	3		31	3AD or 2AD + 2CH										
Superior Ocean View	King	32	28	3		31	2AD + 1CH										
	Twin	10	28	3		31	2AD + 1CH										
	Double / Double	17	28	3		31	3AD or 2AD + 2CH										
Deluxe City View	King	6	36	8		44	2AD + 1CH										
Deluxe Ocean View	King	6	36	8		44	2AD + 1CH										
Deluxe Spa Suite Ocean View	King	4	36	42		78	2AD + 1CH										
Deluxe Suite Ocean View	Double / Double	1	56	-		56	3AD + 2CH										
Deluxe Pool View	King	45	36	9		45	3AD or 2AD + 1CH										
	Double / Double	36	36	9		45	3AD or 2AD + 2CH										
Deluxe Family Suite	King + Bunk bed	9	48	9		57	3AD or 2AD + 3CH										
Premium Deluxe Pool View	King	52	38	7		45	3AD or 2AD + 1CH										
	Double / Double	44	38	7		45	3AD or 2AD + 2CH										
Two Bedroom Premium Suite Pool View	King + Double / Double	2	116	7		123	5AD + 2CH or 4AD + 3CH										

RESTAURANTS & BARS

VENUE	TYPE OF CUISINE	CAPACITY (SEATS)	OPENING HOURS	LOCATION
Bistro Grill & Bar	Thai and international	180	06:30 - 10:30 / 18:00 - 22:30	Lagoon wing - ground floor
Escape Pool Club	Global cuisine	140	11:00 - 22:00	Lagoon wing - poolside
Pink Social	Daytime coffee, bakery, and refreshments; evening cocktails and bar service	20	10:00 - 23:30	Terrace lobby
Tropix Pool Bar	Snacks and refreshments	110	10:00 - 19:00	Tropicale Pool
Koh Kool Pool Bar	Snacks and refreshments	70	10:00 - 19:00	Lagoon Pool
Splash Pool Bar	Snacks and refreshments	50	10:00 - 19:00	Terrace Pool
In-room dining	Thai and international	-	11:00 - 22:00	Available in all guestrooms

MEETINGS & EVENTS

VENUE	LOCATION	AREA (M ²)	SIZE (M X M)	CEILING (M)	CLASSROOM	THEATRE	COCKTAIL	BANQUET	CABARET
Kata Noi 1	Near the villas	110	16.78 x 6.00	3.2	50	80	100	70	50
Kata Noi 2	Near the villas	114	16.78 x 6.00	3.2	50	80	100	70	50
Kamala	Near the villas	50	7.90 x 6.30	3.2	20	36	50	30	20
Karon	Near the villas	48	7.90 x 6.30	3.2	20	36	50	30	20