



RHACTUS
HOTEL
NEW ALAMEIN



Rhactus Hotel New Alamein is your business retreat on Egypt's North Coast. Our hotel combines modern rooms, flexible meeting spaces, and exceptional guest services to create a seamless experience for professionals looking for balancing work and relaxation.

QUICK OVERVIEW

- Ideal for shopping, meetings, easy access to several locations at Alamein and North Coast.
- 132 rooms, with variety of rooms, suites and fully furnished apartments.
- Room space starts from 41m² to 130m².
- 4 Restaurants, coffeshop, and lounges.
- Complimentary high speed internet access.



ACCOMMODATION

- Deluxe Rooms.
- Premium Rooms.
- Family Rooms.
- Triple Rooms.
- Studio Apartment.
- Superior Apartment.
- Executive Suite.
- Royal Suite.

RESTAURANTS & LOUNGES

- KOUZÍNA RESTAURANT
- HELLEN'S CAFÉ.
- OLYMPIA LOUNGE.
- PISÍNA CAFÉ.



OUR FACILITIES

- Indoor swimming pool.
- Gym.
- Sauna & Jacuzzi.
- Gaming facilities including Pool Tables, Table Tennis, and Chess.

LOCATION

- 70 km from Burg El Arab Intel. Airport.
- 70 km from E-Alamein Intel. Airport.
- 5 minutes from the heart of New Alamein city
- Minutes away from El-Alamein War Cemeteries (German, Italian, and English)
- 5 minutes from El-Alamein World War II Military Museum
- Opposite to Marina 4 and 5

HERE FOR A MEETING

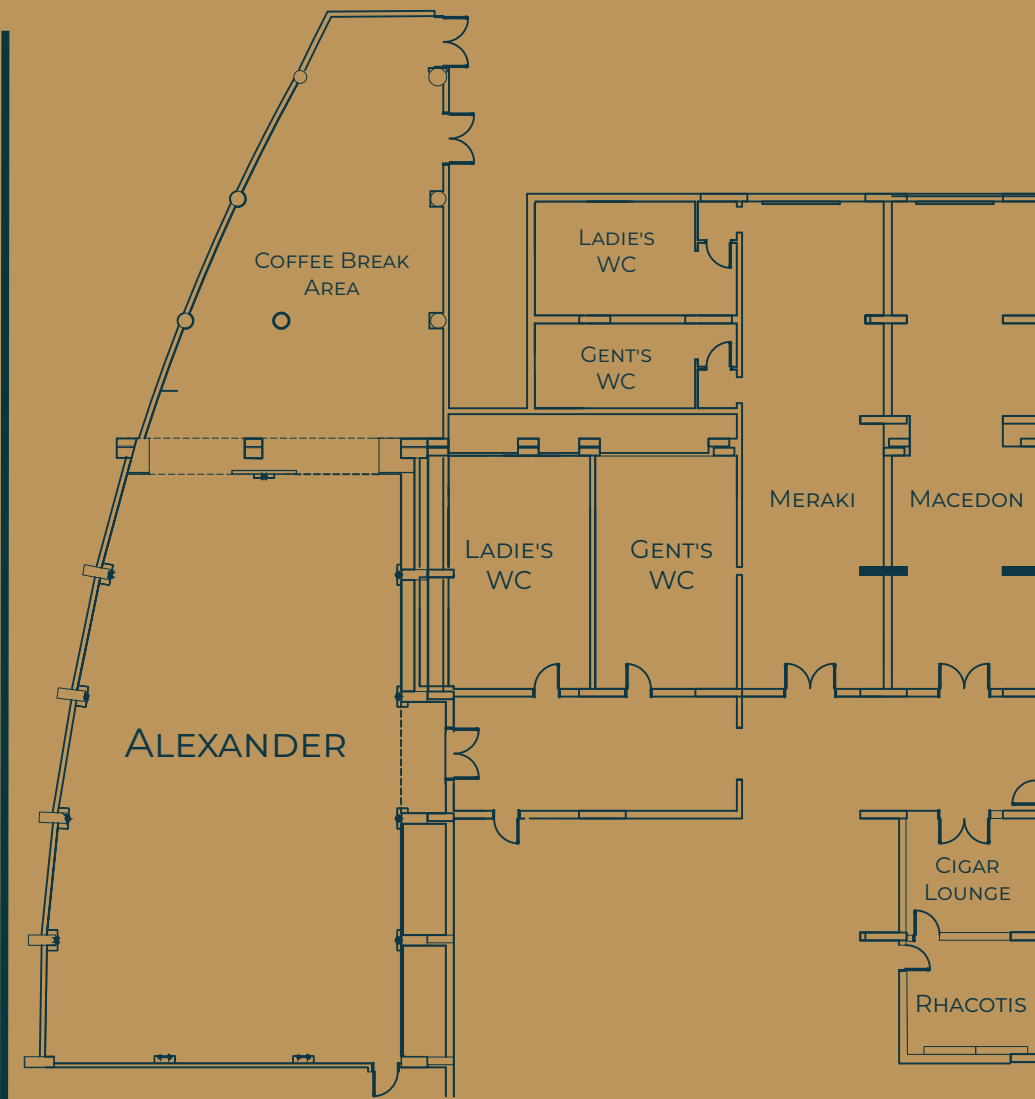
Offering a range of versatile meeting space facilities designed to cater to various corporate events. Equipped with modern audiovisual technology.

Our spacious conference rooms can accommodate from small groups to larger gatherings. Flexible seating arrangements are available to suit your needs.

Our expert catering team is dedicated to creating customized menus for corporate events, conferences, and catering for in-site projects. Choose from a range of delectable dishes, accommodating dietary preferences and restrictions.

We provide flexible dining styles, including buffet spreads for casual gatherings and elegantly plated meals for formal occasions, ensuring an unforgettable culinary experience.

Whether for a corporate retreat, a training seminar, or a special event, our hotel provides the perfect setting for productive and memorable gatherings.



| BALLROOM | CLASSROOM | THEATER | CONFERENCE ROUND OF 6 | BANQUET ROUND OF 10 | RECEPTION | U-SHAPE | BOARDROOM | AREA (SQM) | DIMENSIONS LxWxH (m) |
|----------------------|-----------|---------|-----------------------|---------------------|-----------|---------|-----------|------------|------------------------|
| ALEXANDER BALLROOM | 90 | 220 | 180 | 180 | 200 | 50 | 60 | 276 | 22.71x10.66-13.68x5.65 |
| MACEDON MEETING ROOM | 60 | 100 | 70 | 50 | 70 | 40 | 60 | 105 | 18.70x5.58x2.80 |
| MERAKI BOARD ROOM | — | — | — | — | — | — | 22 | 102 | 18.80x5.46x2.80 |
| CIGAR LOUNGE | — | — | 6 | — | — | — | — | 22 | 4.99x4.41x2.80 |
| RHACOTIS BOARD ROOM | — | — | — | — | — | — | 6 | 22 | 4.99x4.41x2.80 |