

  
EXOTICA RESORT & SPA  
THE PALM, DUBAI



A DISTINCTIVE ISLAND OASIS  
WHERE THE EXOTIC IS CELEBRATED



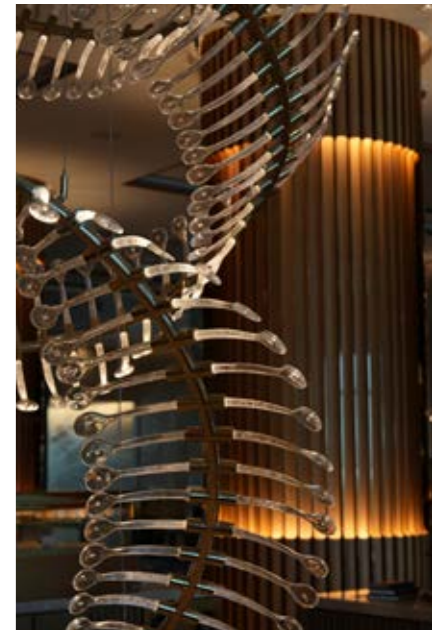
## INTRODUCTION

Nestled on the shores of Dubai's iconic Palm Jumeirah, Taj Exotica Resort & Spa, The Palm, Dubai is a distinctive island oasis where guests can celebrate the exotic side of life.

Gastronomy is carefully curated and guests are taken on a sensorial culinary journey across the resort's seven dining and bar options. From the progressive Indian cuisine of Varq to the Arabic fusion of Raia and classic gastropub dishes of Roaring Rabbit, each concept is unique and inspired by a mix of cultures, with modern twists on traditional recipes prepared with the highest quality ingredients.

Families can create indelible memories with 230 metres of private white sand beach, the longest swimming pool on Palm Jumeirah's East Crescent, the full of joy Popsicle Kids Club, a Game Room for teens, and well-appointed sporting facilities including two tennis courts, state-of-the-art fitness centre, putting green, a padel court and Surf & Snack foodtruck.

The award-winning J Wellness Circle Spa is the perfect retreat. The profundity of this experience reaches its peak with invigorating session of Bihar School of Yoga. The holistic wellness discovery continues with rooms exclusively assigned for Ayurvedic massage and couples' therapy. Gold-infused oils offer indulgent luxury, while herb-dyed linen and lead-free pottery combines eco-friendly with elegance.



## DINING

---

### VARQ

Every dish surprises even the most discerning enthusiast with delectable interpretations of traditional Indian recipes. Enjoy handcrafted cocktails and boutique spirits along with exclusive experiences such as our chef's table, whisky tasting and immersive chef's classes. Book private dining rooms for intimate occasions, family celebrations or corporate events.



### RAIA

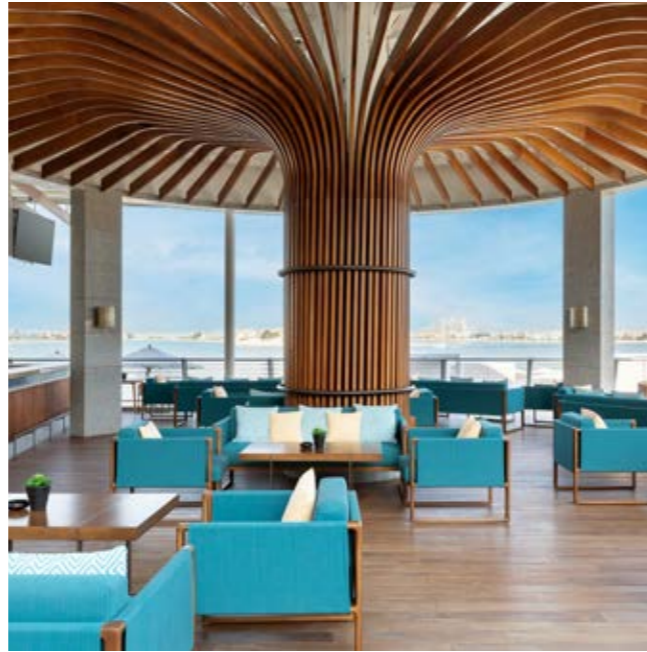
With its elegant style and panoramic views of the Palm's horizon and Dubai's iconic skyline, Raia offers sophisticated comfort within a vibrant Arabesque atmosphere. Socialize in style while enjoying tantalizing Middle Eastern sharing plates and inventive cocktails.



## DINING

### THE COAST

This bistro experience is set against the shoreline with stunning views of The Palm as the incomparable backdrop for days well spent. Indulge in some of the world's most celebrated international cuisines and order a handcrafted cocktail as a refreshing accompaniment in this entirely al fresco experience that leaves no boundaries between you and the enchanting coastline you have come to enjoy



### LIME POOL BAR

Swim up to the Lime Pool Bar to enjoy fresh beverages in the sun or in the cool shade. There is no need to choose between friendly banter by the bar or luxuriating in the water, because here you can experience the best of both worlds.





## DINING

### PALM KITCHEN

Enjoy a bright, airy breakfast setting or a casual dining destination boasting à la carte lunch and dinner. An international menu featuring cuisine from all around the world satisfies every palate, with traditional and exotic flavours, making it ideal for hosting special events.



### ROARING RABBIT

A family-friendly gastropub inspired by the whimsical character of the White Rabbit from Alice in Wonderland. From the eccentric ambience to the adjacent game room, Roaring Rabbit is a fantastical experience for the whole family offering live sport matches, inventive cocktails, meticulously selected draught brews and classic pub grub.





## DINING

---

### EMPEROR LOUNGE

---

At the heart of Taj Exotica's lobby is the Emperor Lounge, an inviting indulgence with an atmosphere and menu that make relaxation an irresistible prospect. Gourmet coffee and a variety of soothing tea blends are accompanied by a tantalizing selection of pastries and baked delicacies. Our traditional English or Mumbai Afternoon Tea is all about leisurely luxury, while a classic cocktail selection makes for a vibrant discovery of refreshing mixology at this sophisticated lounge.



### TAJ CLUB LOUNGE

---

Exclusive to guests staying in rooms with Club Lounge access and suites, Taj Club Lounge is where guests can enjoy hot beverages and baked delicacies throughout the day, as well as traditional afternoon tea and a spirited cocktail hour. Gourmet coffees and petits fours are also on offer.



## ACCOMMODATION

### LUXURY ROOM KING BED

These luxury rooms in Dubai are beautifully styled in burnished wood tones and accented with the gold and sea blue hues.

SIZE: 45 SQM



### LUXURY ROOM TWIN BED

These luxury rooms in Dubai are beautifully styled in burnished wood tones and accented with the gold and sea blue hues.

SIZE: 45 SQM





## ACCOMMODATION

### LUXURY SEA VIEW ROOM KING BED

Boasting views of the Arabian Gulf and the iconic Dubai skyline from their private balconies, Our luxury sea view rooms are a serene blend of sophistication and inspiration for couples seeking a perfect getaway, these rooms also cater to business travelers with a spacious desk for comfort and productivity. The ensuite marble bathrooms are a luxurious sanctuary, complete with a walk-in shower, standalone tub and equipped with luxury amenities. These rooms feature plush king-sized bedding with a comfortable sofa bed completing an elegant sanctuary of relaxation and style

SIZE: 45 SQM



### LUXURY SEA VIEW ROOM TWIN BED

Boasting views of the Arabian Gulf and the iconic Dubai skyline from their private balconies, Our luxury sea view rooms are a serene blend of sophistication and inspiration for guests seeking a perfect getaway, these rooms also cater to business travelers with a spacious desk for comfort and productivity. The ensuite marble bathrooms are a luxurious sanctuary, complete with a walk-in shower, standalone tub and equipped with luxury amenities. these rooms feature plush twin beds with a comfortable sofa bed completing an elegant sanctuary of relaxation and style

SIZE: 45 SQM





## ACCOMMODATION

### LUXURY PALM SEA VIEW ROOM KING BED

With stunning views of the iconic Palm Jumeirah's Arabian Gulf and the resorts pool and beach surroundings, our Luxury rooms offer a refined escape. The rooms feature a soothing palette of blue and gold hues, evoking tranquility and elegance. Ideal for both vacationing couples and business travelers, each room includes a spacious desk for effortless work, alongside a plush king-sized bed, a comfortable sofa bed, and a cozy seating area. The ensuite marble bathrooms are a luxurious sanctuary, complete with a walk-in shower as well as a standalone tub equipped with luxury amenities, ensuring an unforgettable stay in Dubai.

SIZE: 45 SQM



### LUXURY PALM SEA VIEW ROOM TWIN BED

With stunning views of the iconic Palm Jumeirah's Arabian Gulf and the resorts pool and beach surroundings, our Luxury rooms offer a refined escape. The rooms feature a soothing palette of blue and gold hues, evoking tranquility and elegance. Ideal for both vacationing couples and business travelers, each room includes a spacious desk for effortless work, alongside a plush twin beds, a comfortable sofa bed, and a cozy seating area. The ensuite marble bathrooms are a luxurious sanctuary, complete with a walk-in shower as well as a standalone tub equipped with luxury amenities, ensuring an unforgettable stay in Dubai.

SIZE: 45 SQM



## ACCOMMODATION

---

### LUXURY FAMILY ROOM KING BED

---

Elegantly spread across 60sqm, this luxurious family room provides an exceptional haven for families visiting Dubai. A private balcony overlooking the resort's surroundings, while the interiors are thoughtfully designed with plush king sized bedding to ensure restful evenings. This spacious room features a comfortable sofa bed, dedicated workspace, perfect for both relaxation and productivity. The opulent bathroom is a sanctuary of comfort, with a separate soaking tub and walk-in shower, providing the ultimate in convenience and luxury. Every detail of this room is crafted to offer families a serene, spacious and refined retreat in the heart of Dubai

SIZE: 60 SQM



### LUXURY FAMILY PALM SEA VIEW ROOM KING BED

---

Elegantly spread across 60sqm, this luxurious family room provides an exceptional haven for families visiting Dubai. A private balcony with stunning views of the iconic Palm Jumeirah's Arabian Gulf and the resorts pool and beach surroundings, creating a serene backdrop for relaxation. Inside, the interiors are thoughtfully designed with plush king sized bedding to ensure restful evenings. The spacious room features a comfortable sofa bed, dedicated workspace, perfect for both relaxation and productivity. The opulent bathroom is a sanctuary of comfort, with a separate soaking tub and walk-in shower, providing the ultimate in convenience and luxury. Every detail of this room is crafted to offer families a serene, spacious and refined retreat in the heart of Dubai

SIZE: 60 SQM



## ACCOMMODATION

### EXOTICA PALM SEA VIEW ROOM KING BED WITH CLUB LOUNGE ACCESS

Experience unparalleled elegance in our Exotica Sea View rooms, adorned in signature blue and gold tones. Located on the upper floors, these rooms offer stunning views of Palm Jumeirah's skyline from private balconies. Each room features plush king beds, sofa beds, and a generous workspace, blending luxury with functionality. The marble bathroom is a sanctuary of relaxation with a walk-in shower and soaking tub. Guests enjoy exclusive access to the Taj Club Lounge, featuring High Tea, evening cocktails, and butler service to enhance your stay.

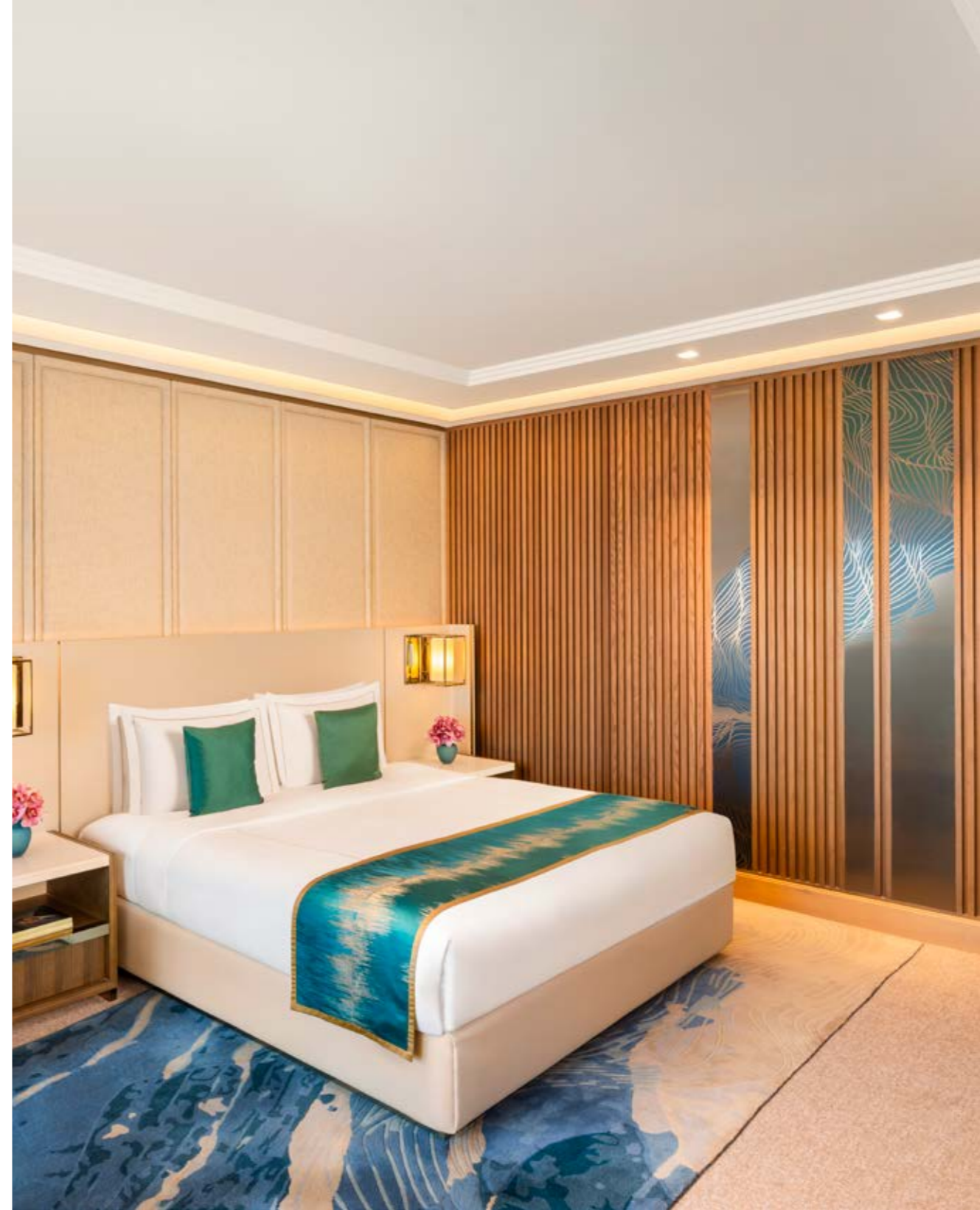
SIZE: 45 SQM



### EXOTICA PALM SEA VIEW ROOM TWIN BED WITH CLUB LOUNGE ACCESS

Experience elegance in the Exotica Sea View rooms, featuring our signature blue and gold tones and situated on the upper floors with breathtaking views of Palm Jumeirah from private balconies. Each room offers plush twin beds, sofa beds, a generous workspace, and a marble bathroom with a walk-in shower and soaking tub. Guests enjoy exclusive access to the Taj Club Lounge, featuring benefits like High Tea, evening cocktails, and butler service, enhancing your stay to create an unparalleled experience.

SIZE: 45 SQM





## ACCOMMODATION

### LUXURY SUITE SEA VIEW WITH CLUB LOUNGE ACCESS

Discover our opulent luxury suites, showcasing sea views from a private balcony. Each suite features a king-size bedroom with an en-suite bathroom, a spacious living area with a sofa bed, and a guest powder room. Enjoy exclusive benefits, including complimentary butler service and access to the Taj Club Lounge with High Tea and evening cocktails. Ideal for families, the luxury suites also offer the option of interconnecting rooms for added space.

SIZE: 90 SQM



### LUXURY SUITE PALM SEA VIEW WITH CLUB LOUNGE ACCESS

Discover our opulent luxury suites, showcasing sea views from a private balcony. Each suite features a king-size bedroom with an en-suite bathroom, a spacious living area with a sofa bed, and a guest powder room. Enjoy exclusive benefits, including complimentary butler service and access to the Taj Club Lounge with High Tea and evening cocktails. Ideal for families, the luxury suites also offer the option of interconnecting rooms for added space.

SIZE: 90 SQM



## ACCOMMODATION

### GRAND LUXURY SUITE SEA VIEW WITH OPEN JACUZZI

Our Grand Luxury Suites offer meticulous craftsmanship and indulgent features, including marble bathrooms and impeccable butler service. Situated on the upper floors, these suites boast expansive living areas for relaxation and refinement. Unwind in the private jacuzzi on the terrace while enjoying stunning sea views. Guests also benefit from complimentary access to the exclusive Taj Club Lounge for private meetings, afternoon tea, and evening cocktails, elevating their experience to new heights of sophistication.

SIZE: 120 SQM



### EXOTICA SUITE SEA VIEW WITH OPEN JACUZZI

Perched on the upper floors of our resort, the Exotica Suite epitomizes refined luxury in 165 square meters of light-filled spaces and contemporary design. It features an elegant living room with a dining area and kitchenette, and a private terrace with a jacuzzi overlooking the Arabian Gulf. With personalized butler service and exclusive access to the Taj Club Lounge, this suite provides an unparalleled level of sophistication and comfort.

SIZE: 165 SQM





## ACCOMMODATION

### TWO BEDROOM GRAND LUXURY SUITE SEA VIEW



The Two-Bedroom Grand Luxury Suites at Taj Exotica Dubai span 140 square meters, offering unrivaled comfort and elegance with breathtaking Arabian Gulf views from each balcony. Accommodating up to 7 guests, the suite features 2 spacious bedrooms with plush king beds, a walk-in closet, and an opulent living room with separate seating and dining areas in soft blue and gold hues. The marble bathrooms include luxurious amenities, and additional storage ensures convenience. Butler service and exclusive access to the Taj Club Lounge enhance this extraordinary experience.

SIZE: 140 SQM

### PRESIDENTIAL SUITE FOUR BEDROOM SEA VIEW

Experience the pinnacle of opulence in our Presidential Suite at Taj Exotica Dubai, a prestigious retreat spanning 500 square meters and accommodating up to 10 guests across 4 expansive bedrooms. Enjoy panoramic views of the Arabian Gulf from multiple private balconies, relax in the elegantly appointed living area, and gather in the grand dining room. Additional luxuries include a separate kitchenette, walk-in closet, and ample luggage storage. With indulgent amenities in all bathrooms, personalized butler service, and exclusive access to the Taj Club Lounge, every detail exceeds

SIZE: 500 SQM





## AMENITIES

### BATHROOM AMENITIES

Each room is thoughtfully appointed with refined amenities designed for comfort and indulgence. Guests can enjoy plush bathrobes, soft slippers, and signature beach bags for days under the sun, along with an elevated in-room dining experience featuring carefully curated amenities that reflect the resort's spirit of understated luxury.



### ENSUITE BATHROOM

The ensuite marble bathrooms are a luxurious sanctuary, complete with a walk-in shower, standalone tub, equipped with luxury amenities and design elements inspired by tranquil blues and golds of the Arabian Gulf, these rooms provide a serene haven for both solo travellers and couples, offering ultimate comfort and sophistication during your Dubai stay.

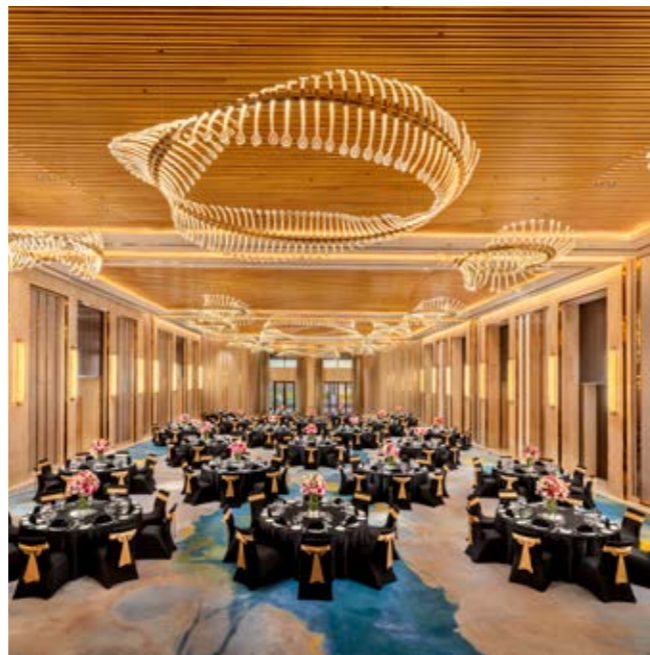


## MEET & CELEBRATE

### ROYALE BALLROOM 1

With sumptuous décor and chandelier lighting, our biggest ballroom is a sublime venue for large-scale conferences, cutting-edge events or lavish family parties and wedding celebrations.

SIZE: 615 SQM  
MAX CAPACITY: 500



### ROYALE BALLROOM 2

Stunning decor, expansive space and distinct interior palm-leaf motif makes this elegant space ideal for smaller gatherings such as engagement celebrations or corporate business events.

SIZE: 250 SQM  
MAX CAPACITY: 200

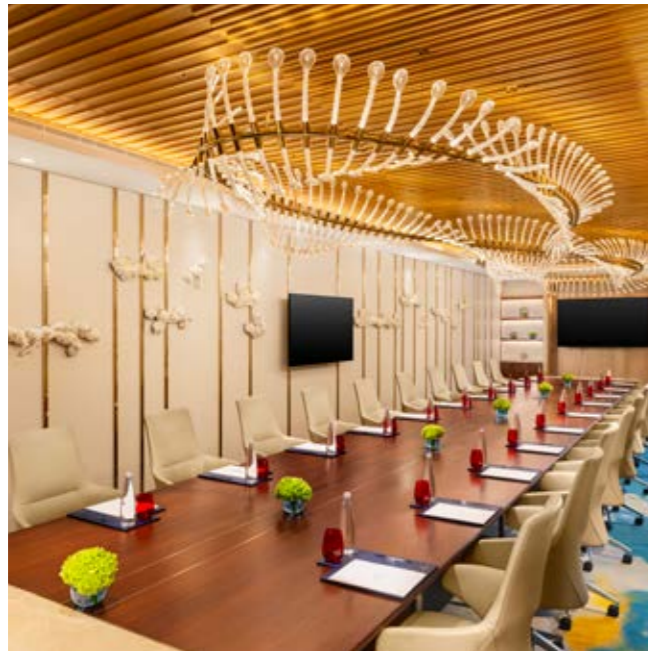


## MEET & CELEBRATE

### AZURE

An intimate VIP boardroom Style set up with contemporary meeting facilities for a private group of 10 members.

SIZE: 30 SQM  
MAX CAPACITY: 10



### AQUA

Exceptionally equipped for power decisions with modern meeting room facilities with a 20 members VIP boardroom setting.

SIZE: 80 SQM  
MAX CAPACITY: 20





## MEET & CELEBRATE

---

### TERRACE NORTH DECK

The Terrace North Deck offers a breathtaking outdoor venue overlooking the serene waters — an exquisite setting for weddings, celebrations, and elegant evening parties. With its open-air charm and panoramic views, it provides a romantic and versatile space where every occasion becomes truly unforgettable, exclusive social gatherings.

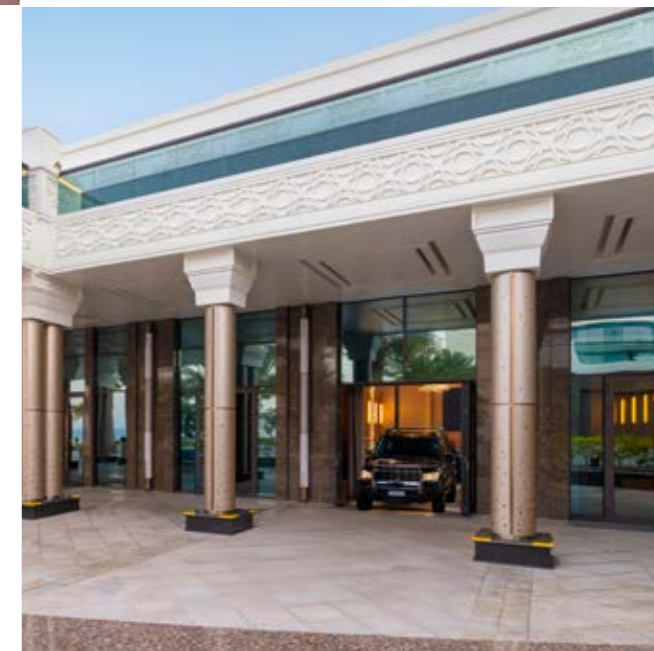


MAX CAPACITY: 150

### ROYAL BALLROOM OUTDOOR TERRACE

Surrounded by the soothing sounds of cascading water and open skies, the Outdoor Fountain Area offers an elegant al fresco setting ideal for cocktail receptions, automobile launches, and intimate private dinners. It's striking fountain backdrop and expansive layout create a sophisticated atmosphere that elevates every occasion into a memorable experience.

MAX CAPACITY: 150





## MEET & CELEBRATE

### SAPPHIRE

A natural light-flooded boardroom with seating for 12 and cutting-edge AV presentation facilities, which can be combined with neighbouring Tiffany to form a larger space for sizable corporate meetings.

SIZE: 40 SQM  
MAX CAPACITY: 12



### TIFFANY

A bright room with AV equipment and seating for 12 delegates. For larger business events, it combines with neighbouring Sapphire to double the dimensions of the space.

SIZE: 40 SQM  
MAX CAPACITY: 12





## MEET & CELEBRATE

### OCEANA

Indigo's twin, with space for up to 12 delegates in boardroom mode and equipped with contemporary audio-visual facilities, this versatile room also seats up to 25 members when arranged in theatre format.

SIZE: 35 SQM  
MAX CAPACITY: 25

### INDIGO

Equipped with contemporary AV facilities, this compact event space is ideal for small board meetings seating up to 12 members, and can be adapted for receptions.

SIZE: 35 SQM  
MAX CAPACITY: 25



## MEET & CELEBRATE

---

### LAPIS

Seating up to 40 guests, with state-of-the-art audio visual and internet facilities, this adaptable space is recommended for larger board meetings or theatre-style presentations.

SIZE: 72 SQM  
MAX CAPACITY: 40



### LAGUNA

---

A spacious layout adjacent to Lapis, ideal for board meetings or presentations, it comes equipped with a large TV screen and the ultimate in AV equipment.

SIZE: 72 SQM  
MAX CAPACITY: 40





## MEET & CELEBRATE

### COAST LAWN

Nestled within the luxurious Taj Exotica Resort & Spa The Palm Dubai, our stunning outdoor garden venue offers the perfect setting for intimate weddings, birthday celebrations, and sophisticated cocktail receptions. Surrounded by meticulously manicured greenery and boasting views of the iconic Palm Jumeirah skyline, this serene space combines natural elegance with seaside charm.

SIZE: 2,255 SQM  
MAX CAPACITY: 400



### SOUTH BEACH

Taj's stretch of private beach with golden sands has a magical backdrop of the Arabian Gulf and the city skyline, providing a wonderfully romantic setting for couples' photoshoots, engagement celebrations and family weddings. And of course, here in Dubai year-round sunshine for al fresco ceremonies is virtually guaranteed.

SIZE: 325 SQM  
MAX CAPACITY: 300

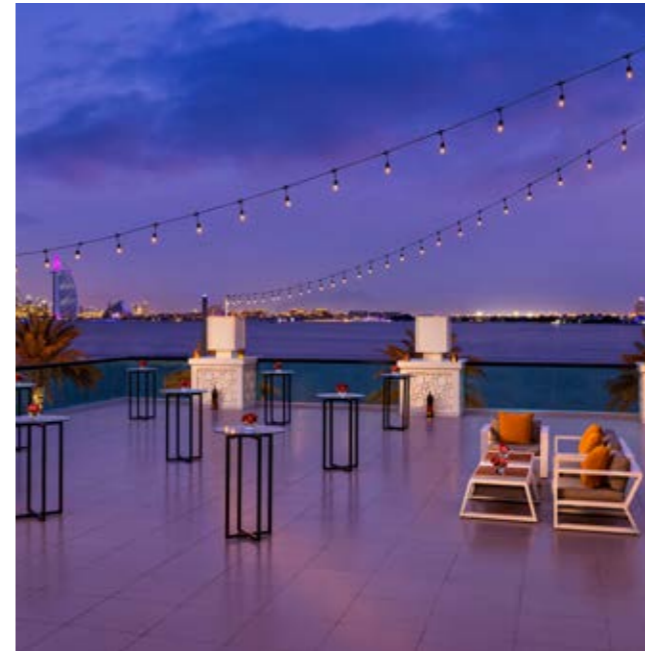




## MEET & CELEBRATE

### TERRACE

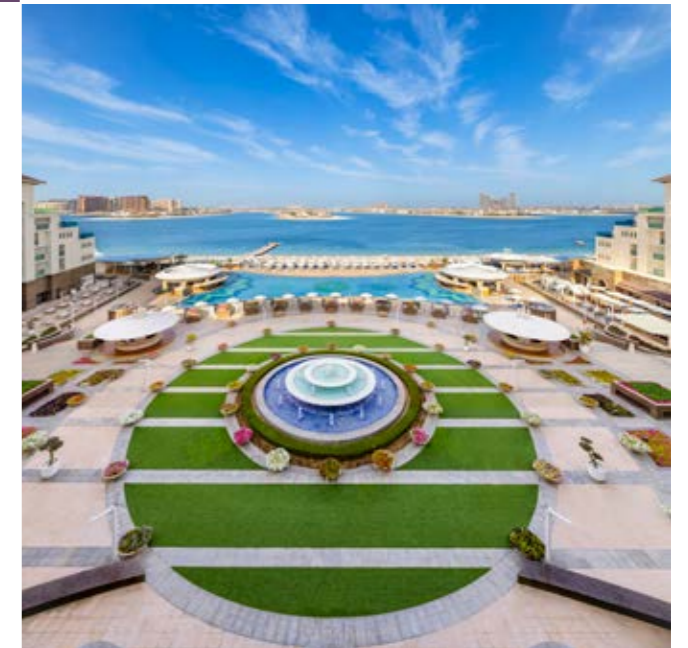
Located on the first floor, The Terrace is a refined open-air venue that overlooks the tranquil waters, offering a captivating ambiance under the open sky. With its elegant setting and seamless flow of space, it provides the perfect backdrop for cocktail receptions, private dinners, and exclusive social gatherings.



MAX CAPACITY: 150

### COURTYARD

Nestled at the heart of the resort, The Courtyard offers a charming al fresco venue surrounded by lush landscaping and serene architecture. Ideal for intimate gatherings, elegant soirées, and cultural celebrations, it exudes a sense of warmth and sophistication in every detail.



MAX CAPACITY: 1500

## SPA & WELLNESS

### AYURVEDA

Inspired by traditional Indian healing wisdom, we believe that a spa unfolds path of life that opens out channels to nurture one's life force. J Wellness Circle embraces a deep understanding of mind, body and spirit, their individual needs and their interdependences. The ethos of our carefully recreated treatment is drawn on the rich and ancient wellness heritage of India, the fabled lifestyle and culture of Indian royalty and the healing therapies that embrace Indian spirituality.



### YOGA

Maintaining the ancient traditions and practices, our certified yoga instructor bring you the teachings of Bihar School of Yoga, providing practical techniques and methods to bring simplicity, harmony and balance into life in the modern world. Explore the Yoga not just a practice, but a lifestyle which offers an experience of complete integration of the human personality and nature.





## SPA & WELLNESS

---

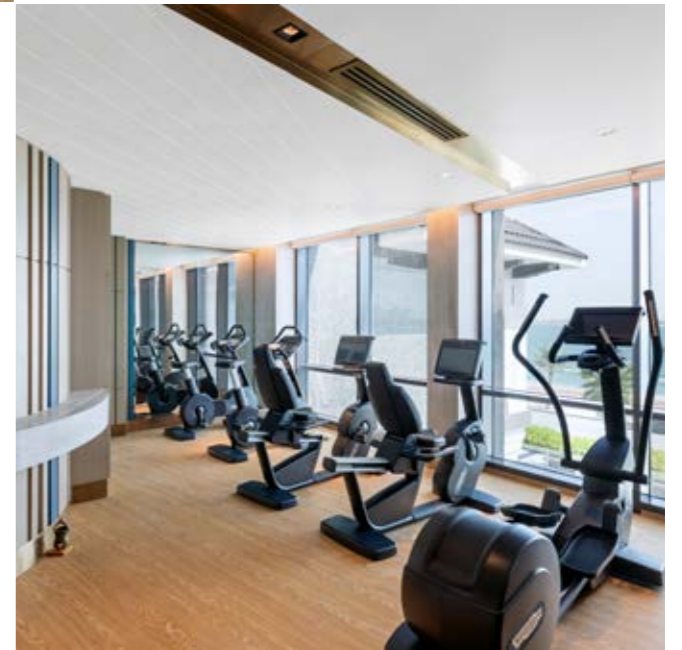
### J WELLNESS CIRCLE

Discover the restorative power of Indian healing, an ancient wisdom enriched by old-world opulence, in the sanctuary of J Wellness Circle. Achieve harmony with the universe's five sacred elements – Akash (Space), Vayu (Wind), Agni (Fire), Jal (Water), and Prithvi (Earth) through a holistic healing journey with its nine treatment rooms, a yoga studio, steam room, sauna and dedicated spaces for Ayurvedic massage and couples therapy. Immerse yourself in multisensory therapies, artfully blending soothing scents, tranquil sounds, and a gentle yet transformative touch.



### HOUR-24 FITNESS CENTRE

The spacious well-appointed gym boasts the latest exercise equipment with ample options for a range of workouts. It has a variety of fitness classes that include gender-exclusive sessions and a professionally trained, enthusiastic staff at your service.



## EXPERIENCES

---

### TENNIS COURTS & PUTTING GREEN

For guests keen to indulge in outdoor sports, Taj Exotica offers two tennis courts and a putting green. Residents can rent out the spaces from morning to evening, and better their game by inviting their friends or coaching instructors.



### POPSICLE KIDS' CLUB

Filled with colour and joy, Popsicle Kids Club is where children can enjoy hours of fun with soft play areas, games and more at their disposal. With a well-planned calendar of activities such as popsicle making kids stay entertained and engaged throughout the day. Parents enjoy the peace of mind knowing that kids from ages four to eleven are supervised by attentive and thoughtful staff. Babysitting services are also available.





## EXPERIENCES

### GAME ROOM

Teenagers 12 to 18 years old get their own recreation centre with age-appropriate games such as foosball, air hockey and a range of exciting video games. They can keep themselves entertained and spend time with peers, while their parents do the same.



### FOOD TRUCK

Our Foodtruck offers delicious bites and refreshing beverages closer to our guests basking by the pool and beach, where the sea breeze and the aroma of delicious delights help create unforgettable memories. Discover the menu bursting with flavours paired with the coolest sips served in a grab and go for a comfortable feast by the pool and beach.



## RITUALS

At Taj Exotica Resort & Spa, The Palm, Dubai, we ensure that your stay is a holistic experience from your arrival to your next visit. Feel the expression of Tajness in each of our six signature rituals.



## OCEAN BLISS WELCOME

Immerse into the island oasis with our ocean inspired welcome and discover what awaits.



## AFTERNOON TEA

Taste the blend of Arabian allure with Indian hospitality in this afternoon tea experience.





## EXPERIENCES

---

### PADEL COURT

A Padel aficionado's haven, where guests relish the Padel excitement on our premier beachside court, while gazing at the stunning vistas of Palm Jumeirah. Our facility caters to both seasoned players aiming to elevate their skills and beginners eager to embrace something novel.



### SWIMMING POOL & PRIVATE BEACH

Welcome to seclusion and space in a little piece of personal paradise with a 70 metres long pool and 230 metres of exclusive white sand offer guests a seaside retreat while remaining close to discerning service, refreshing cocktails and the comfort of a hotel room. Escape to serenity and soak in the sunshine with 70 metres, the longest pool in the Palm Jumeirah. Designed with Mandala accents and blue tones mirroring the azure blue sea, the impressive pool is cornered by Lime Pool Bar where refreshing cocktails, decadent bites and heavenly views of The Palm provide the perfect retreat to unwind and luxuriate. A separate dedicated kids pool is also available for the young ones to enjoy.



# RITUALS

---

## MORNING WELLNESS

Begin the day with a revitalizing stretch or the mind and soul enriching Bihar School of Yoga session.



## CHERISHED FAREWELL

Take home sweet memories to reminisce and look forward to staying with us again during your next visit.





## RITUALS

---

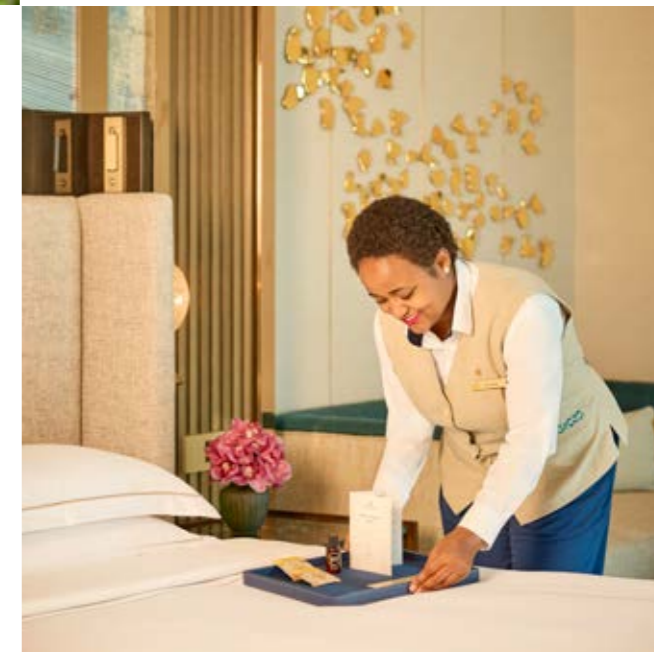
### SUNSET RITUAL

Experience the majestic energy as the day turns into night as we dim the lights and light the candles.



### SLEEP RITUAL

Feel the benefits of a restful sleep with the best practices we have curated for you.





  
**TAJ**  
EXOTICA RESORT & SPA  
THE PALM, DUBAI

---

EAST CRESCENT ROAD, PALM JUMEIRAH, PO BOX 566737, DUBAI, UNITED ARAB EMIRATES  
T: +971 4 275 4444 | [EXOTICA.DUBAI@TAJHOTELS.COM](mailto:EXOTICA.DUBAI@TAJHOTELS.COM) | [TAJEXOTICAPALMDUBAI.COM](http://TAJEXOTICAPALMDUBAI.COM)

  @TAJPALMDUBAI