



CHATEAU  
DU VILLAGE  
PATONG





## LOCATION

### **The best jumping spot to explore Patong and all that the neighborhoods**

The hotel is located on Phangmuang Sai Kor Road, the 3rd main road in Patong, surrounded by various amenities for tourists, including international restaurants, markets, and shopping areas. Guests will enjoy the convenient location and the neighborhood which is easy to navigate on foot.

Chateau Du Village Patong offers guests a free shuttle service to Patong Beach.

#### Hotel distancing

1.5 km	Patong Beach
1.6 km	Jungceylon and Central Malls
2 km	Bangla walking street
5 km	Paradise Beach
9 km	Kata Beach
11 km	Kamala Beach
16 km	Phuket Old Town
12 km	Bangkok Phuket Hospital
22 km	Phuket International Airport



PATONG -PHUKET BUS

AIRPORT SMART BUS

IMMIGRATION

KALIM BAY

BANGLA WALKING STREET

PATONG HOSPITAL

CENTRAL MALL

BANZAN FRESH MARKET

JUNGCELON MALL

RESTAURANTS & BARS

BANGKOK BANK

BIKE TO RENT

TOKI 24-HR WASH







# HOTEL EXTERIOR

---

**ENTRANCE**

---

**CHATEAU  
DU VILLAGE**





ENTRANCE



24-HOUR SOLUTION CENTER

# LOBBY

Guests can take advantage of complimentary WiFi throughout the property.



# LOBBY LOUNGE

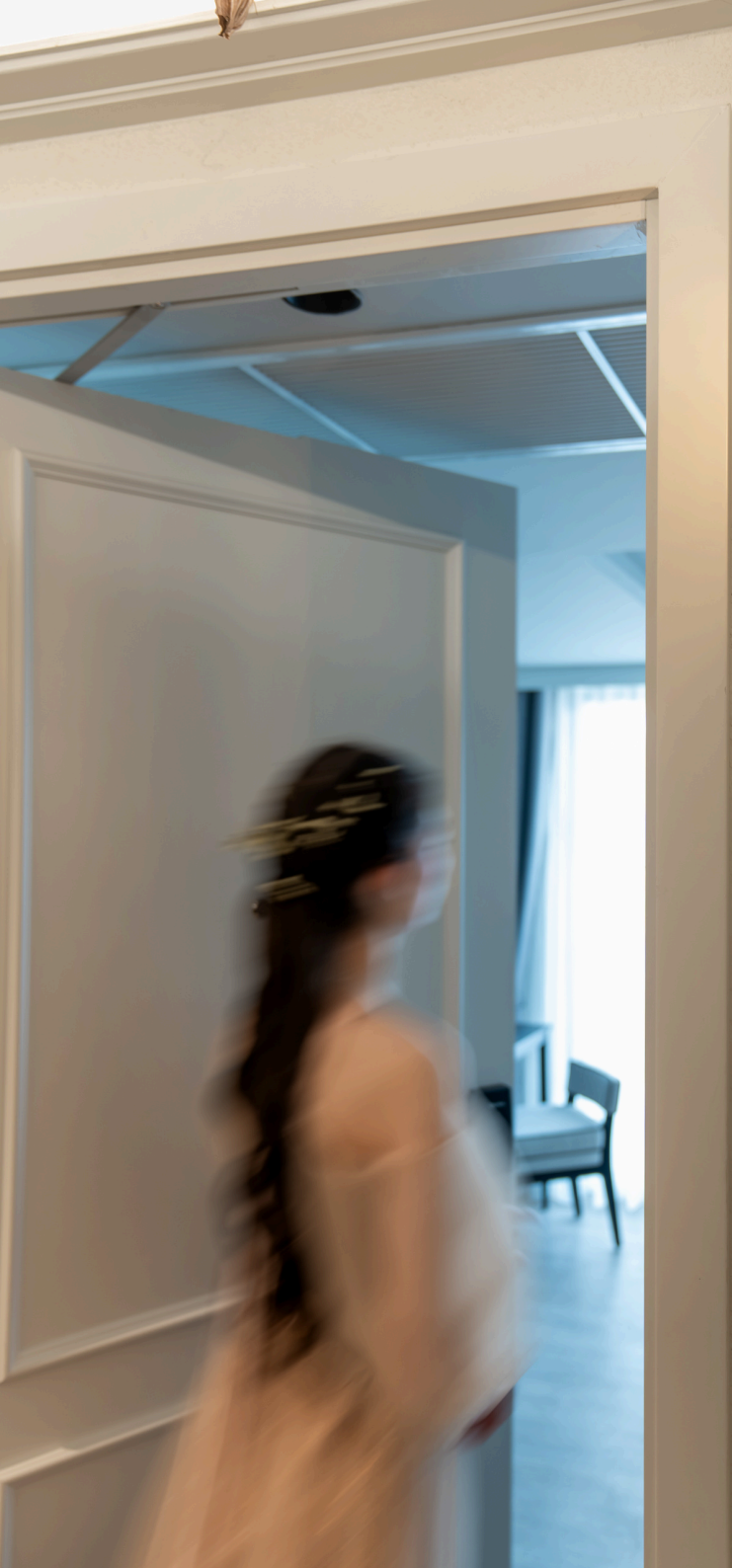
Our 2nd-floor Lobby Lounge transforms from an elegant setting for afternoon tea and coffee during the day



**CORRIDOR**

---





## ROOMS AND SUITES

Elegance meets comfort of 219 rooms and including suites with private balcony, have modern residential styling living space with open kitchenette and dining area with the view of city and mountain of Patong village comprises 200 double and 19 suites with the categories included room concept offering:

Each room and suite has a private balcony, open kitchenette and dining area as well as spectacular views of the surrounding neighborhood and verdant mountains. Highlights of each room and suite include comfortable furniture, blackout curtains and state-of-the-art amenities.

## INROOM AMENITIES

- Double or twin beds
- Air conditioning
- Free Wifi
- Connecting rooms
- Private balcony
- Housekeeping
- Room service
- Wake up call service
- Seating area
- Desk and chair
- Smart tv
- Inroom telephone
- Safe deposit box
- Closet
- Beach towels
- Beach bag
- Umbrella
- Slippers
- Kitchenette
- Microwave
- Refrigerator
- Bottled water
- Kettle
- Capsule coffee machine
- Coffee / tea maker
- Kitchen sink
- Bath / shower
- Hot/ cold water
- Bathrobe
- Shower gel / Shampoo / Conditioner / Hand gel
- Towels
- Hair dryer
- Complimentary toiletries
- Clothes rack





SUPERIOR STUDIO





STUDIO POOL VIEW



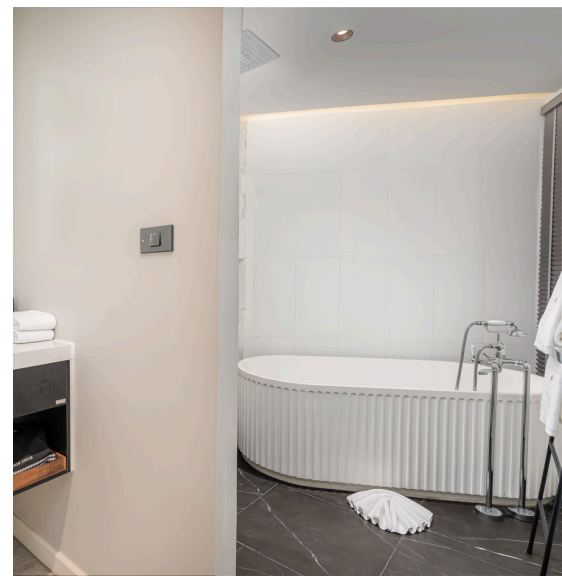


DELUXE





DELUXE POOL VIEW





DELUXE ONE BEDROOM





JUNIOR SUITE





CHATEAU SUITE





## RESTAURANTS AND BARS

5 restaurants and bars including a convenient all-day dining restaurant, an exclusive bar and lounge, exciting rooftop pool bar, an additional pool bar on the first floor, and a laidback coffee and tea shop.

There are also two refreshing swimming pools including the rooftop pool which is a great spot to enjoy the city views of Patong. Located on the first floor, this pool bar has a sundeck area for sheer relaxation.

# LA VACHE STEAKHOUSE

The 2-storey all day dining restaurant, located near the first floor swimming pool and bar. Breakfast is served here daily and offers a lavish buffet spread. Breakfast offer Buffet Menu opens from 06:00 AM - 11:00 AM

🕒 Everyday 06:00 AM - 11:00 PM

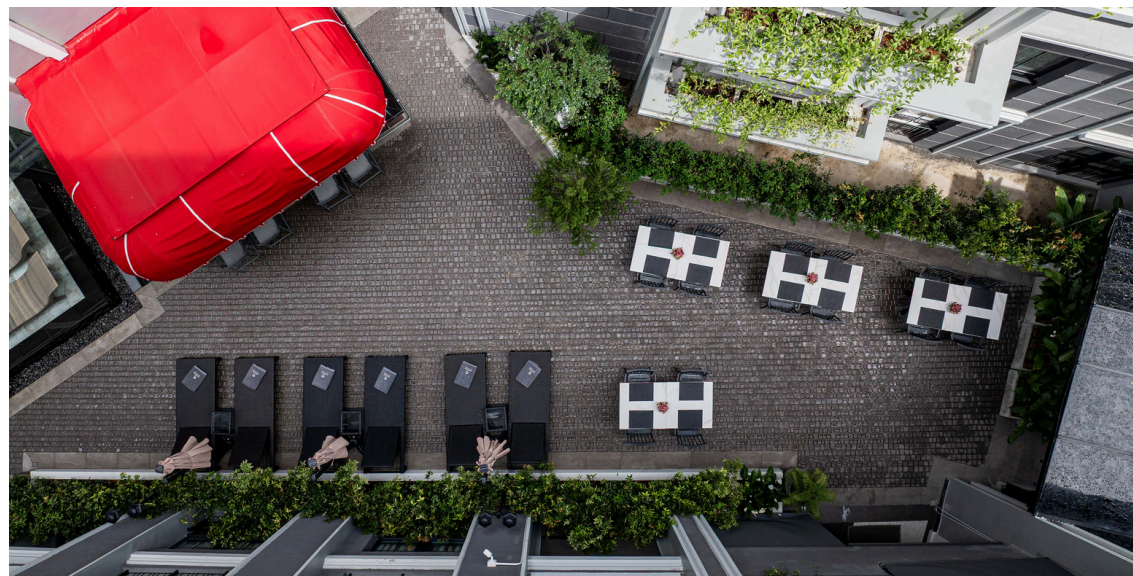




## SOL BAR

The first-floor pool bar lets guests swim up to the sunken bar and enjoy drinks and refreshments from a comfortable seat.

🕒 Everyday 11:00 AM - 10:00 PM



# THE KNIGHT' S WHISPER

Chateau Du Village presents its  
Signature red and white wine

🕒 Everyday 04:00 PM - 01:00 AM





## LUNE BAR

Our Lune Bar located on rooftop next to the roof-top swimming pool. The has remarkable city views of Patong, and is the perfect spot to enjoy a cocktail as the sun sets and grab a light bite.

🕒 Everyday 10:00 AM - 7:00 PM





## LOBBY LOUNGE

Comfortable plush armchairs and sofas are arranged in cozy seating areas. A stylish coffee and pastry. Relax and enjoy freshly brewed coffee or tea in our elegant lounge.

🕒 Everyday 10:00 AM - 7:00 PM

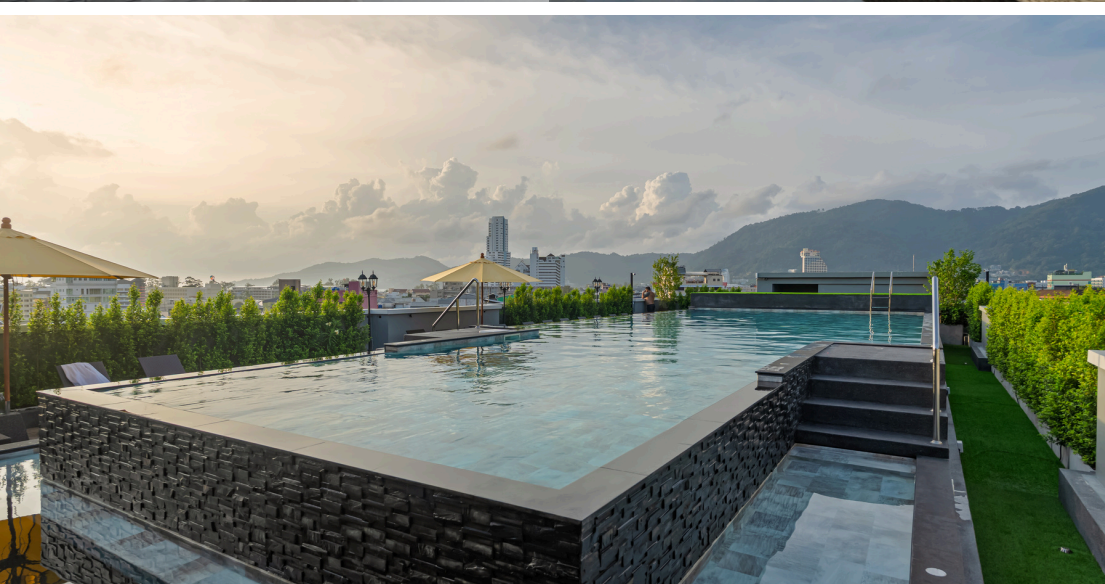




## ROOFTOP POOL

A stunning infinity pool located on the rooftop floor, offering swimming experience with perfect the mountain and the city views of Patong

🕒 Everyday 08:00 AM – 08:30 PM





## FIRST-FLOOR POOL

This is the First-Floor Pool is a relaxing spot to laze on the sundeck during your holiday.

🕒 Everyday 08:00 AM – 07:00 PM



## ROOFTOP GYM

This is the First-Floor Pool is a relaxing spot to laze on the sundeck during your holiday.

🕒 Everyday 08:00 AM – 07:00 PM





## EVENT & MEETING SPACES

Meetings and events can be arranged and facilitated at our all day dining restaurant, and offer a variety of seating capacity on both the lower and upper floors for a unique space for product launches, corporate meetings or team building.

🕒 Everyday 08:00 AM – 07:00 PM





## PARKING

Up to 64 auto smart parking and 30 normal parking spots. Free smart parking for hotel guest and rental parking available.

# CHATEAU DU VILLAGE



## PARKING

Up to 64 auto smart parking and 30 normal parking spots.  
Free smart parking for hotel guest and rental parking available.



**CHATEAU**  
DU VILLAGE  
PATONG

**ADDRESS:** 178/9 Phangmeang Sai Kor Road, Patong, Kathu, Phuket 83150

**TEL:** +66 (0)76 602 999      **EMAIL:** [info@chateauduvillagepatong.com](mailto:info@chateauduvillagepatong.com)

**[WWW.CHATEAUDUVILLAGEPATONG.COM](http://WWW.CHATEAUDUVILLAGEPATONG.COM)**