



# THE HOTEL



## The First Collection Business Bay

Experience a harmonious blend of sophisticated city life and tranquil retreat at The First Collection Business Bay, featuring 437 stylish rooms and suites in the vibrant heart of Dubai's Business Bay district. Revel in panoramic vistas of Dubai's skyline and Burj Khalifa, and embrace your urban adventures while enjoying exclusive access to Soluna Restaurants and Beach Club The Palm. Our convenient shuttle bus services ensure a smooth transition from energetic city exploration to peaceful beachside escapades. Savor a stay where retail therapy at nearby Dubai Mall and serene beach vibes coexist in perfect harmony.

- ROOMS
- RESTAURANTS
- FACILITIES
- LOCATION



# ROOMS

The First Collection Business Bay's 437 spacious guest rooms and suites, which feature a comprehensive range of guest amenities and facilities, are ideal for business and leisure travelers

## DELUXE ROOM

- Up to 37 sqm
- Two adults, one child
- King or twin beds available
- Premium and sustainable guest amenities
- Stables views
- Downtown views
- Lake views

## PREMIER ROOM

- 32 sqm
- Two adults, one child
- King-size bed
- Extra-large balcony with views of Burj Khalifa

## CLUB ROOM

- Up to 37 sqm
- Two adults + one child or three adults
- Situated on the 14th floor and above
- King or twin beds available
- Extra-large balcony with views of Burj Khalifa
- Complimentary access to the hotel's VIP lounge
- Stables views
- Lake views

## EXECUTIVE SUITE

- Up to 66 sqm
- Up to three adults + one child
- King-size bed
- Separate living room
- Two bathrooms
- Extra-large balcony
- Complimentary access to the hotel's VIP lounge
- Stables views
- Lake views

## COLLECTION SUITE

- 69 sqm
- Up to four adults + one child
- King-size bed
- Separate living room
- Two bathrooms
- Extra-large balcony with views of Burj Khalifa
- Complimentary access to the hotel's VIP lounge



# RESTAURANTS

## VYNE

Enjoy the finest Mediterranean-inspired cuisine at Vyne, The First Collection Business Bay's comfortable and relaxed all-day dining venue, which is perfect for families.

## THE BLACKSMITH BAR & EATERY

Dubai's famous homegrown smokehouse eatery, The Blacksmith, is the star of the show at The First Collection Business Bay, delivering a succulent and exciting menu inspired by the American South.

## POOLSIDE BAR

Kickback and relax with a healthy snack and delicious beverage at The First Collection Business Bay's poolside bar, while soaking in the panoramic views of Downtown Dubai and the world's tallest building, Burj Khalifa.

## RISEN CAFÉ & ARTISANAL BAKERY

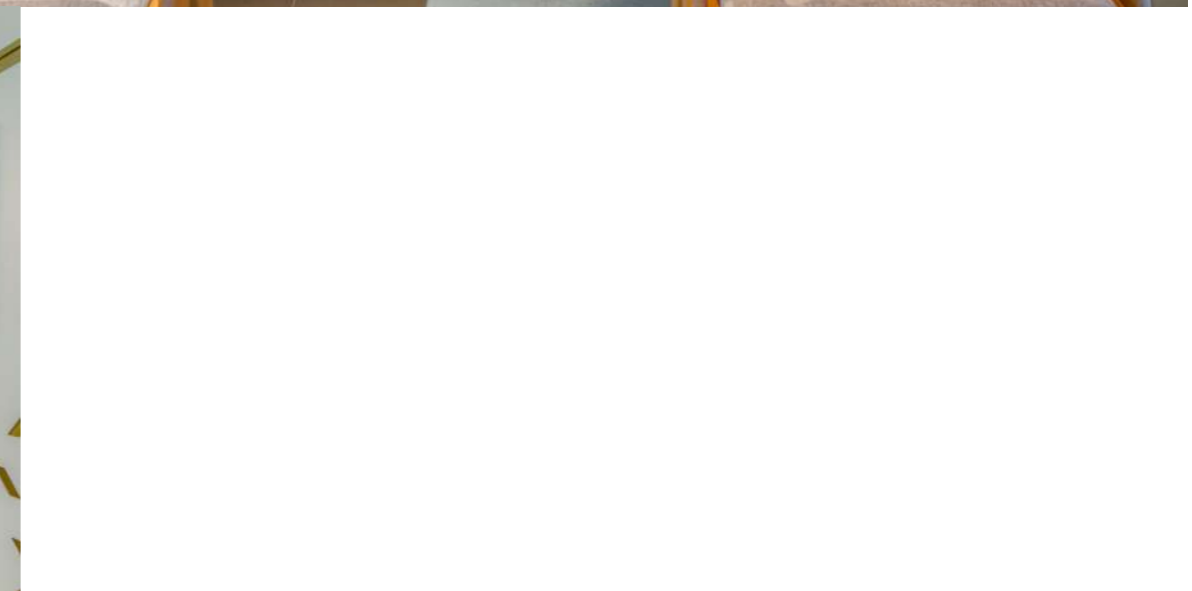
Dubai's best artisanal bakery offers the finest coffee and healthy breakfast & lunch menus for guests on the go.

## AALIYA LOUNGE

The First Collection Business Bay's Shisha Lounge is the perfect late-night venue to chill out and enjoy a refreshing cocktail and shisha with friends.

## IN-ROOM DINING

Choose from an extensive and eclectic menu of popular dishes sourced from across the hotel's restaurant portfolio.





# FACILITIES

## SWIMMING POOL & DECK

Take a dip in our stunning 25sqm swimming pool and enjoy a refreshing beverage or delicious snack on the sundeck while taking in the incredible panoramic views of Downtown Dubai and Burj Khalifa, a global icon and the world's tallest building. A smaller adjacent pool is the perfect option for families with toddlers.

## GYM

Our ultra-modern gym features a vast range of cardio equipment and weights, making it the ideal destination for fitness enthusiasts.

## SPA

Enjoy the ultimate in relaxation with a rejuvenating treatment or massage at our exclusive spa, which caters separately to male and female guests.

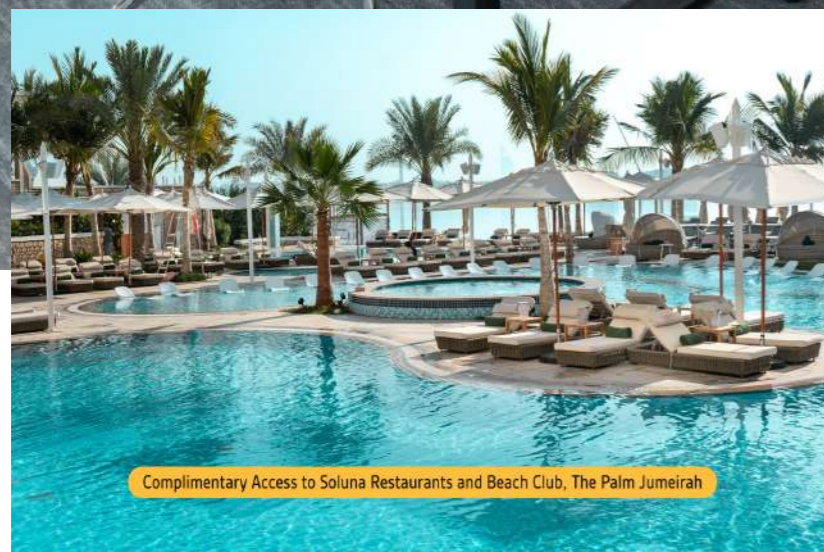
## MEETINGS & EVENTS

With four fully equipped meeting rooms including a spacious boardroom and extensive business friendly facilities, The First Collection Business Bay is the ideal destination for board meetings, mini conferences or intimate corporate events.

## SOLUNA RESTAURANTS AND BEACH CLUB THE PALM

Situated on The Palm Jumeirah, there lies an oasis where warm-hearted hospitality, sublime interiors and restorative beach days await.

With an array of sun loungers and private cabanas neatly scattered around its Mediterranean-style pool, and access to a private beach, Soluna offers endless sun-kissed views and signature dining experiences.



Complimentary Access to Soluna Restaurants and Beach Club, The Palm Jumeirah



# LOCATION



The First Collection Business Bay is situated in the heart of the action, moments away from famous attractions including Burj Khalifa and Dubai Mall in neighbouring Downtown Dubai. It is also located within walking distance of the stunning Dubai Canal, with its growing collection of marinas, riviera-style restaurants, cafes and retail outlets.

- 5-10 minutes from Downtown Dubai, home to Dubai Mall, Burj Khalifa, and Dubai Aquarium
- 10 minutes from Jumeirah Beach
- 15 minutes from Dubai International Airport
- 20 minutes from Dubai Marina and Palm Jumeirah
- 35 minutes from Dubai World Central and Jebel Ali Free Zone

The First Collection  
Business Bay, Al Amal Street,  
Business Bay, Dubai, UAE,  
P.O BOX 215373

T. +971 4 873 4445  
[businessbay@thefirstcollection.ae](mailto:businessbay@thefirstcollection.ae)  
[thefirstcollection.ae/business-bay](http://thefirstcollection.ae/business-bay)