

# HOTEL LOCAL

DUBAI – JUMEIRAH VILLAGE TRIANGLE

---

AUTOGRAPH COLLECTION®  
HOTELS



# YOUR KEY TO THE CITY

## Welcome to Hotel Local Dubai, Jumeirah Village Triangle, Autograph Collection

Celebrate the unique spirit of Jumeirah Village Triangle with a stay at Hotel Local Dubai, proudly part of Marriott International's Autograph Collection — a curated portfolio of distinctive, design-led hotels.

Designed for effortless comfort, our welcoming spaces suit business travellers, families, and leisure guests alike. The hotel balances Dubai's vibrant energy with the calm, community feel of JVT, offering a relaxed and connected stay. Guests can enjoy a diverse range of dining experiences, including Farmers Commons, Neighbourhood Brew, Orilla, our upcoming Risen Café & Artisanal Bakery, and the Poolside Restaurant & Bar — each adding its own flavour to every visit. Families can enjoy our dedicated Kid's Club and outdoor playground, while adults unwind with rejuvenating spa treatments or time by the pool.

Discover a signature Autograph Moment with our Bee Ritual, featuring Hatta honey tasting, honey-infused creations, and a visit to the hotel's beehives. Guests also enjoy exclusive access to Soluna Restaurants & Beach Club on Palm Jumeirah, with complimentary shuttle service. With convenient proximity to shopping malls, tourist hotspots, and the city's hidden gems, Hotel Local offers seamless access to Dubai — delivering serenity, exploration, and authentic local experiences.

*A Stay Exactly Like Nothing Else.*



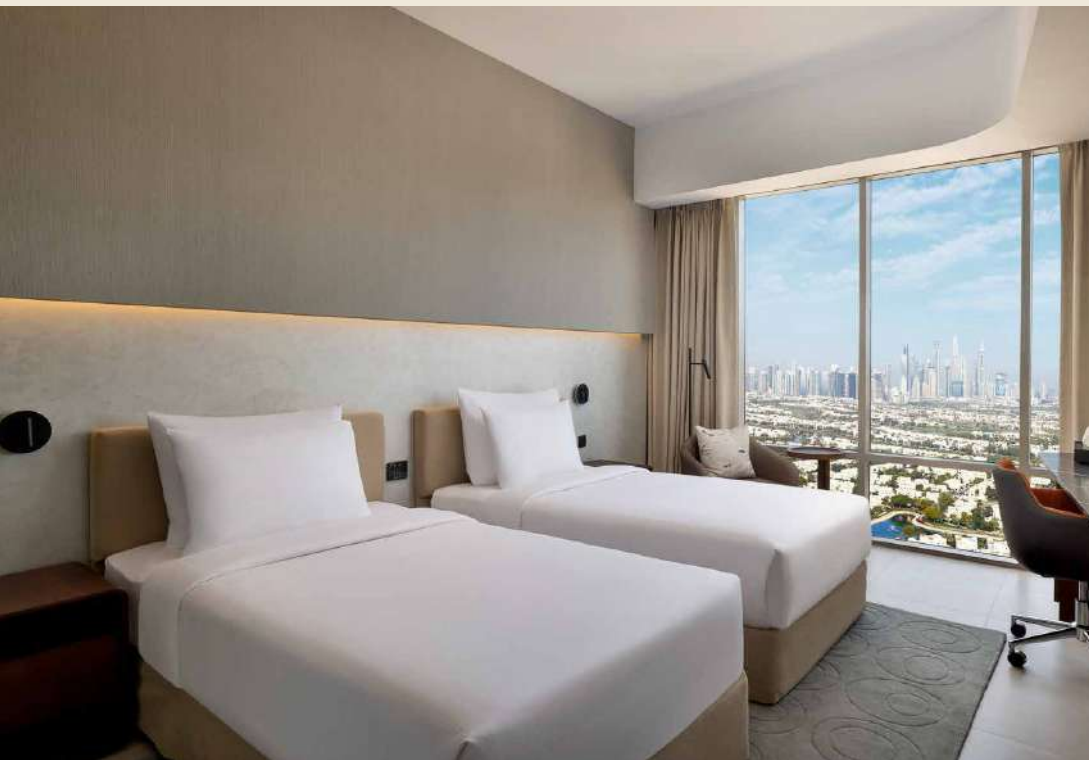


# ROOMS

## Relax & Recharge

Hotel Local Dubai offers a range of Classic, Premium, and Suite rooms designed with your comfort in mind.

Each room features modern interiors and thoughtful amenities, creating a welcoming retreat after a day of exploration.



### Deluxe King or Twin

26 SQM | 2 ADULTS + 1 CHILD

These contemporary rooms in JVT are available with a choice of a king-size or twin bed setup for varied preferences. They feature complimentary Wi-Fi, a 55-inch smart TV, minibar, tea and coffee facilities, a safe, and the option of a bathtub or shower.

### Skyline Deluxe King or Twin

26 SQM | 2 ADULTS + 1 CHILD

Overlooking the stunning skyline of Dubai, these contemporary rooms in JVT are available with a choice of a king-size or twin bed setup for varied preferences. They feature complimentary Wi-Fi, a 55-inch smart TV, minibar, tea and coffee facilities, a safe, and the option of a bathtub or shower.

### Premium King

30 SQM | 2 ADULTS + 1 CHILD

These rooms are designed with additional space for guests, are fitted with modern interiors, and provide stunning 180-degree views of Dubai. Each room includes a king-size bed and all the amenities, including a shower and a safe. Guests enjoy exclusive access to Soluna Restaurants & Beach Club on Palm Jumeirah, with complimentary shuttle service.

### Club King or Twin

26 SQM | 2 ADULTS + 1 CHILD

Located on the higher floors, these rooms offer a choice of king or twin beds and exclusive access to the Club Benefits for an enhanced experience, including the option of a bathtub or shower. Guests enjoy complimentary breakfast at Farmers Commons amongst other benefits like Happy Hour, along with regular amenities.

### Club Suite

55 SQM | 2 ADULTS + 2 CHILD

Found on the higher floors for added privacy, these suites combine comfort and style with a separate living area and a king-size bed, ideal for families. Guests enjoy exclusive access to the Club Benefits, including complimentary breakfast at Farmers Commons, soft drinks, tea, and coffee served from 6:30 AM to 10:30 PM as well as Happy Hour.

### Family Room

2 ADULTS + 2 CHILDREN | UP TO 4 ADULTS

Ideal for families, these interconnected rooms combine a deluxe king and a twin setup, comfortably accommodating 2 children and 2 adults or up to 4 adults. Guests can enjoy complimentary Wi-Fi, 55-inch smart TVs, tea and coffee facilities, a minibar, a safe, and both a bathtub and a shower.

## Room Amenities:

- 55" Flat-Screen LED TV
- Electric Kettle
- Iron/Ironing Board
- In-Room Safe
- Plush Bedding
- Work Desk
- Connecting Rooms
- Accessible Options
- Complimentary Wi-Fi
- Bathrobe and Slippers
- Contemporary Interior Design
- Minibar
- Touch Panel Room Controls
- In-Room Streaming
- Toiletries & Bed Linen
- Hair Dryer
- Safe Lockers
- Air Conditioning
- Power Socket Near Bed

# RESTAURANTS

## Dine with Us

Savour a diverse selection of dining experiences at Hotel Local Dubai catering to every palate and occasion.



## FARMERS COMMONS

Local Produce | Comfort Food | Community-Inspired  
Daily from 6:30 AM

A community-inspired, farm-to-table restaurant offering all-day dining in a relaxed, contemporary setting. Farmers Commons redefines comfort food through sustainable sourcing and partnerships with local growers, producers, and artisans, featuring hydroponically grown herbs and farm-fresh produce. The menu blends international favourites with Texas-inspired flavours, creating authentic, hearty, and flavourful dishes that celebrate both global tastes and rustic Southern charm.



## ORILLA

Mediterranean | Asian  
Daily from 12:00 PM

Orilla is a heartfelt tribute to the sunlit coastal towns of the Mediterranean, where food, music, and good company come together in harmony. Inspired by Chef Saradhi Dakara's travels and memories, the menu brings together the bold simplicity of Mediterranean flavours with delicate Asian touches — a fusion that feels both familiar and new.



## NEIGHBOURHOOD BREW

Artisanal Coffee | Craft Beer  
Daily from 10:00 AM

Serving craft brews, speciality beverages, and feel-good food throughout the day — from vibrant salads to flame-grilled favourites and late-night bites. Enjoy relaxed open-air dining while kids make the most of the on-site splash pad and playground. With live entertainment, big-screen sports, and a warm neighbourhood vibe, Neighbourhood Brew is the perfect spot to gather, unwind, and enjoy good times any time of day.



## RISEN CAFÉ & ARTISANAL BAKERY

Coffee | Pastries | Grab & Go

Risen, our award-winning, homegrown café and artisanal bakery in Dubai is the perfect spot to start your day with freshly brewed coffee and handcrafted pastries. Enjoy light bites and wholesome meals throughout the day in a relaxed setting, where quality and flavour are at the forefront. Thanks to our diverse selection and dedication to traditional artisanal methods, we are proud to be considered as one of the best bakeries in Dubai.

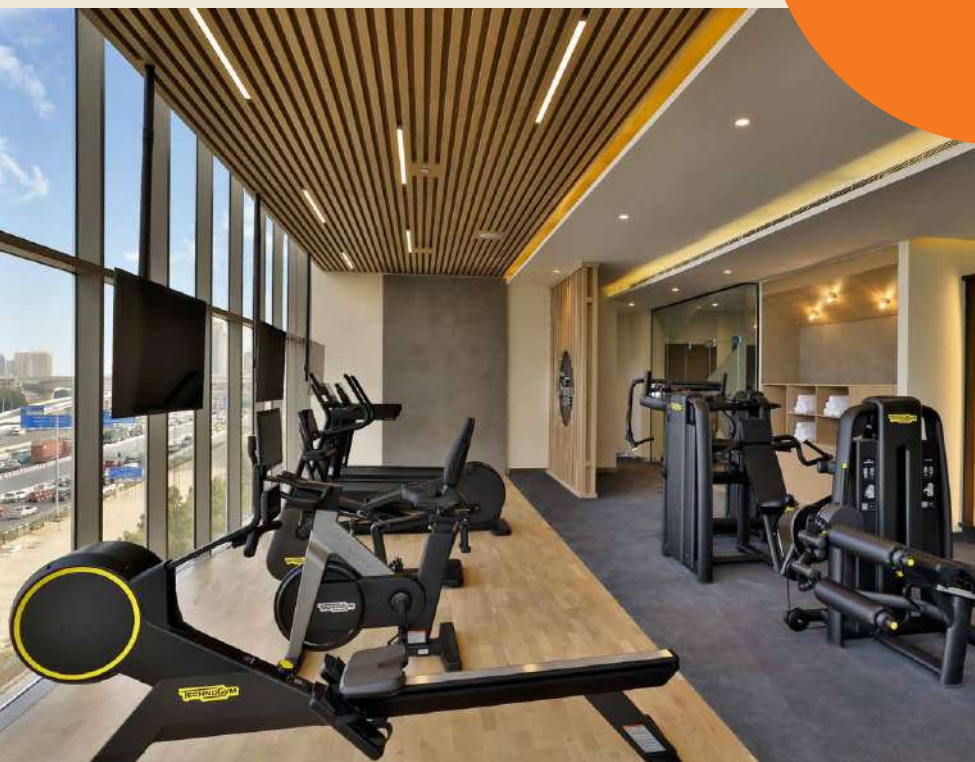


# FACILITIES

## A Community For Everyone

Our spaces are a meeting point for storytellers, digital nomads, friends, family, strangers, and everyone in between. Let the little ones explore our Kid's Corner, get down to business in our meeting rooms, or find calm at Rayya Wellness Spa.

Need a break? Lounge by our pool with a drink in hand or escape to our beach club in Dubai, on the Palm Jumeirah for sun, sand, and the sea.



## Soluna Restaurants & Beach Club

Elevate your stay with exclusive access to our Mediterranean-inspired beach club on the Palm Jumeirah, featuring private cabanas, dining, stunning views, and watersports in Dubai. Complimentary shuttle service is provided for all guests.

## Outdoor Pool

Open Daily from 8:00 AM - 8:00 PM

Enjoy a relaxing swim or lounge by the pool for the perfect escape.

An adjacent mini playground offers a fun area for the children to play in, ensuring fun for the whole family.

## Kid's Club and Splash Pad

Open Daily from 9:00 AM - 6:00 PM

Our dedicated indoor playroom provides a safe and entertaining space for younger guests to explore and enjoy. Designed with comfort and security in mind, the Kid's Corner ensures a memorable and enjoyable experience for the little ones, while parents sit back and relax.

## Rayya Wellness Spa

Open Daily from 10:00 AM - 10:00 PM

Indulge in restorative treatments, from hot stone massages to skin therapies, in a serene and calming environment. Guests can expect a peaceful and personalised experience.

## Fitness Centre

Open 24/7

Stay active with a selection of modern cardio and strength-training equipment in a bright, inviting space designed to support your wellness journey.

## Meeting Rooms

Host corporate events, workshops, or private gatherings in our four versatile meeting spaces, equipped with modern amenities and dedicated support.

Contact us at - [Meeting.RoomsHL@hotellocaldubai.com](mailto:Meeting.RoomsHL@hotellocaldubai.com)

## Hotel Facilities:

- 24/7 Front Desk
- Tourism & Activity Desk
- Express Check-in/Check-out
- 24/7 In-room Dining (Please call Ext. #2020)
- In-room Safe
- Restaurants & Coffee Shop
- Fitness Centre
- Souvenir Shop
- Doorman
- Concierge Desk
- Breakfast Available (\$)
- Laundry Facilities
- Dry Cleaning Service
- Outdoor Swimming Pool
- Business Centre
- Currency Exchange
- Accessible Facilities
- Free Wi-Fi
- Key Access
- Wake-up Calls
- Poolside Bar
- Soluna Restaurants and Beach Club

# THE GUEST EXPERIENCE JOURNEY

At Hotel Local Dubai, the guest experience is shaped by local character, meaningful rituals, and genuine human connections—thoughtfully designed to reflect the rhythm of the neighbourhood from arrival to departure.

- Neighbourly arrival with our signature **Bee Cool** welcome drink
- Locally curated Arabic chocolates presented as a warm welcome amenity
- **Autograph Moment:** The **Bee Ritual**, connecting guests to our local honey story
- Rooftop **beehives** and sustainability-led practices embedded into daily operations
- Farm-to-table dining and **hydroponic growing at Farmers Commons**
- Locally inspired guestrooms and wellness touchpoints
- **Hidden Gems Map** highlighting neighbourhood sights and authentic Dubai experiences
- Community-focused spaces and family-friendly experiences designed for connection
- Post-stay engagement through crafted **Hotel Local Dubai playlists** and shared guest stories



# LOCATION

## PERFECTLY LOCATED IN JUMEIRAH VILLAGE TRIANGLE

Nestled in the serene neighbourhood of JVT, Hotel Local Dubai is a gateway to Dubai's most exciting attractions. Whether you're seeking retail therapy, cultural experiences, or vibrant nightlife, our hotel offers convenient access to it all.



Hotel Local Dubai, Jumeirah Village Triangle, Autograph Collection, District 7, Dubai, UAE

## CONTACT

**Direct:** +971 4 545 2000

**Reservations:** +971 4 545 2001

**Email:** [reservations@hotellocaldubai.com](mailto:reservations@hotellocaldubai.com)  
[info@hotellocaldubai.com](mailto:info@hotellocaldubai.com)

**MARRIOTT  
BONVOY®**



SCAN TO FIND OUT MORE

## NEARBY HOTSPOTS & HANGOUTS:

### Hidden Gems & Cultural Spots

- Al Seef Heritage Area – 35 minutes
- Arabian Tea House Restaurant & Café – 35 minutes
- Coffee Museum – 35 minutes
- Alserkal Avenue – 15 minutes

### Attractions & Landmarks

- Burj Khalifa – 20 minutes
- Dubai Fountain – 20 minutes
- Museum of the Future – 18 minutes
- Dubai Frame – 25 minutes
- Ain Dubai – 26 minutes

### Nature, Leisure & Activities

- Dubai International Cricket Stadium – 12 minutes
- Miracle Garden – 15 minutes
- Dubai Polo & Equestrian Club – 20 minutes
- Dubai Autodrome – 20 minutes
- The Green Planet Dubai – 20 minutes
- Global Village – 25 minutes
- Dubai Parks & Resorts – 30 minutes

### Airports

- Al Maktoum International Airport – 35 minutes
- Dubai International Airport – 45 minutes

### Shopping Destinations

- Dubai Hills Mall – 15 minutes
- Dubai Mall – 20 minutes
- Mall of the Emirates – 25 minutes
- Dubai Marina Mall – 20 minutes
- The Palm Jumeirah Mall – 20 minutes
- Gold & Diamond Park – 26 minutes
- The Walk & Beach at JBR – 25 minutes