



FOUR  
SEASONS  
HOTEL

*the finest on the island*

CYPRUS



The prestigious independently owned and operated Four Seasons Hotel lies on a sandy beach east of Limassol approximately midway between the airports of Larnaca and Paphos and only a few minutes' drive from the city centre. This five-star resort is the pinnacle of luxury & style, combining impeccable facilities with world class hospitality and service.

**Ownership:** Muskita Hotels Ltd.

**Opening Year:** 1993

**Major Renovation:** 2023, Building Improvements Annually

**Category:** 5 Star Deluxe



FOUR SEASONS





# Rooms

---

- [Superior Inland View](#)
- [Superior Sea View](#)
- [Family Rooms Sea View](#)
- [Family Rooms Seaview with large patio](#)
- [Beach Studios Upper floor](#)
- [Family Beach Studios – Outdoor Jacuzzi & Terrace](#)
- [Garden Studios Upper Floor – “Adults Only”](#)
- [Garden Studios Lower Floor – “Adults Only”](#)
- [Disabled Access](#)
- [Compare Room Types](#)



# Suites

---

- [One Bedroom Inland View Suite](#)
- [Junior Family Suites – Sea View](#)
- [Family Suites](#)
- [The Signature Suites](#)
- [Two Bedroom Family Suites – Sea view](#)
- [Penthouse Suites Sea View](#)
- [Executive Penthouse Suite Sea View](#)
- [Garden Suites – “Adults Only”](#)
- [One Bedroom Luxury Suites – Sea View](#)
- [One Bedroom Grand Suite – Sea View](#)
- [Royal Suite – Sea View](#)
- [Compare Suites Types](#)



# Dining Facilities

---

- [Sera by Ettore Botrini](#)
- [Seasons Oriental](#)
- [M Fusion](#)
- [Tropical Restaurant](#)
- [Colors Café](#)

## *Bars*

---

- [Vista Bar & Terrace](#)
- [Splash Bar](#)
- [Beach Café Bar](#)
- [Garden Pool Bar](#)
- [Garden Court](#)



# Conferences, Weddings and Events

For nearly three decades our event facilities have hosted some of the most notable corporate, social & cultural events from Cyprus & overseas. With over 800 sq. meters of space and two distinctive convention rooms, events of any scale can be accommodated from a small meeting to a multinational conference, festive banquets or hi-impact product launches.

- [The Four Seasons Ballroom](#)
- [The Summit Room](#)
- [The Executive Boardroom](#)
- [The Chairman's Suite](#)
- [The Four Seasons Private Room](#)
- [Weddings](#)





# *Four Seasons Spa*

The Four Seasons Spa features superb luxury treatment rooms and a unique circular dedicated relaxation area.

Offering Anne Semonin treatments to our guests, the Four Seasons spa is indeed the most exclusive spa in Cyprus.



# Family Facilities

## Kindergarten

Fully supervised by qualified personnel for children 3-8 years old. Open all year around.

Operating hours:

10:00 hrs. – 17:00 hrs. in winter

10:00 hrs. – 21:00 hrs. in summer

## Kids Club

For children 7-13 years old with daily and evening activities. Open during Easter, Whitsun, July, August and UK school autumn half term holidays.

## Other children's facilities

Include table tennis, high chairs, babysitting on request, kids' bathrobes slippers and activity back packs on arrival

## Outdoor Play Frame

Available daily from 11am till 6pm (May – October).



# ***Facilities & Services***

## ***Leisure Facilities***

Two outdoor freshwater swimming pools one for “Adults Only”.

Indoor pool heated all year with hydrotherapy. Sauna, two steam rooms & ICE room.

Floodlit tennis court and Padel Tennis court, fully equipped gym with personal trainer, aerobics & aqua classes, activity programme.

## ***Guest Services***

Concierge: General Info, travel assistance, car rental, excursions, site seeing tours, taxi service, restaurant reservations.

Four Seasons Flower Boutique open 24-hours

24-hour room service, laundry & Valet service, hairdresser, foreign exchange, wheelchairs, medical service on call, covered & uncovered parking at no charge, complimentary electric vehicle charging, multi-lingual staff, reception safes for valuables, Internet facilities, secretarial service, twice daily maid service





A modern hotel bedroom featuring a large bed with a grey textured duvet and white pillows. The headboard is composed of vertical panels, with the outer sections having a dark grey diamond-patterned fabric. Two bedside tables with white tops hold vases of red flowers. The room is dimly lit, with a light source visible above the headboard.

# *Four Seasons Rooms & Suites*



## *Superior Inland View*

Our superbly appointed Superior Inland view rooms provide a relaxing & comfortable space to their guests. These elegant smart rooms are luxuriously furnished and feature a spacious marble bathroom offering either walk-in shower with Chroma therapy lights, or both bathtub and walk-in shower with Chroma therapy lights and are ready to accommodate the most demanding guests.

**Room Size:** from 28 sq.m

**Sleeps:** 2 adults and 1 child

**Suitable for:** Couples, Single travellers

**Floors:** 1<sup>st</sup> – 6<sup>th</sup>





## Superior Sea View

The Superior Seaview rooms offer guests the ultimate sense of luxury. Praised by convenience and high-tech equipment, decorated with the finest furniture and soft color touches, luminous marble bathrooms with walk-in shower including Chroma therapy lights, but most importantly, an elegant furnished balcony to enjoy the stunning view of the deep blue Mediterranean Sea at all times.

**Room Size:** from 28 sq.m

**Sleeps:** 2 adults and 1 child

**Suitable for:** Couples, Single travellers

**Floors:** 1<sup>st</sup> to 6<sup>th</sup> floor





## *Disabled Access*

All areas of the hotel are wheelchair accessible; we have 4 rooms specially equipped for guests with restricted mobility, 2 inland view and 2 sea view. These rooms feature roll in showers additional grab rails and drop-down shower seats, drop down support rails are also fitted by the toilets. The rooms have low level light switches, safe boxes and spy holes. The hotel now offers a 45-meter-long lift for wheelchair users and guests with limited mobility providing easy access to the beach.





## Family Room Sea View

The ideal guestroom for families with up to two children or for couples seeking a spacious elegant room to exceed their expectations. Offering the ultimate comfort, elegantly decorated with a cosy living room including an office desk, a spacious bathroom with both bathtub and walk-in shower and of course a comfortable furnished balcony with the splendid view of the limitless deep blue Mediterranean Sea.

**Room Size:** 39 sq.m

**Sleeps:** 2 adults + 2 children or up to 3 adults

**Suitable for:** Couples, Families of up to four persons





## ***Family Room Sea View with large patio***

Combining space, style and functionality, the family rooms with large patio are the perfect guestrooms for families or couples looking for a spacious elegant room to exceed their expectations. Those advantageous rooms are offering the ultimate comfort while being tastefully decorated with a restful living room including an office desk, a spacious bathroom with both bathtub and walk-in shower. The greatest asset of this room, its' immense private balcony where you can sunbathe on your sunbeds while savouring the splendid view of the deep blue Mediterranean Sea.

**Room Size:** 39 sq.m

**Sleeps:** 2 adults + 2 children or 3 adults

**Suitable for:** Couples, Families of up to four persons





## *Beach Studio* *Upper floor*

Ideal for romantic couples, the completely renovated Beach Studios feature the latest luxurious touch accompanied by modern amenities. An atmosphere of tranquillity, a comfortable place to relax your senses, each Beach Studio is a sanctuary. Enjoy your stay at a vast guestroom with a spacious luminous marble bathroom with both a bathtub and a walk-in shower with Chroma therapy lights and a furnished private balcony offering unique views across the gardens to the sea.

**Room Size:** 39 sq.m

**Sleeps:** 2 adults + 1 child

**Suitable for:** Couples, Single travellers





## ***Family Beach Studios*** ***Outdoor Jacuzzi & Terrace***

Combine privacy and relaxation while enjoying the outstanding brand-new wooden terrace furnished with a salon, individual sunbeds and your own private outdoor Jacuzzi. At the inside of the Beach Studios you will find a luxurious living room with sophisticated décor and a spacious marble bathroom with both bathtub and walk-in shower. These Beach Studios situated on the Ground level with immediate access to the gardens and the beach area, represent luxury at its best.

**Room Size:** 39 sq.m

**Sleeps:** 2 adults + 2 children or 3 adults

**Suitable for:** Couples, Families with up to four persons

**Floors:** Ground Floor





## Garden Studios Upper Floor “Adults Only”

Garden Studios are located in the adult only wing of our hotel. Featuring an innovative luxurious design and smart room technology, they are ideal for couples or business people who seek a more sophisticated and private environment. Garden Studios occupy two floors with a river-like pool along the private verandas of the ground floor level. All Garden Studios on the Upper Floor have a private Jacuzzi which is located on the balcony. Finely tuned with the needs of our adult guests, the Garden Studios feature a number of facilities that cover every aspect of comfort: king-size bed, a wooden multi-functional desk, large wardrobe and coffee making facilities including a Nespresso machine. The all-marble bathrooms feature a large vanity area, a Villeroy and Boch spa bath with remote control operation and a separate walk-in shower with Chroma therapy. Besides the excellent facilities, guests staying in Garden Studios enjoy upgraded top quality services such as: complimentary drinks and canapés every evening, Valet service for unpacking of luggage, deluxe fruit basket replenished daily.

**Room Size:** 36 sq.m

**Sleeps:** 2 adults

**Suitable for:** Couples, Single Travellers





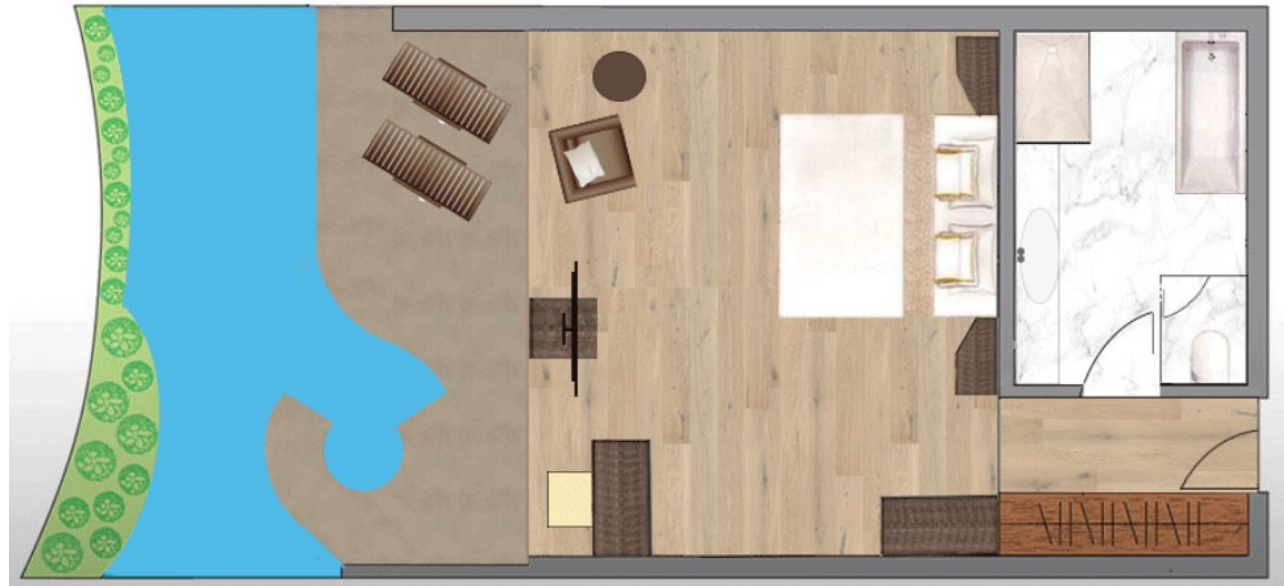
## Garden Studios Lower Floor “Adults Only”

All Garden Studios on the Ground floor have a private Jacuzzi in their balcony within the river-like pool. Finely tuned with the needs of our adult guests, the Garden Studios feature a number of facilities that cover every aspect of comfort: king-size bed, a wooden multi-functional desk, large wardrobe and coffee making facilities including a Nespresso machine. The all marble bathrooms feature a large vanity area, a Villeroy and Boch spa bath with remote control operation and a separate walk-in shower with Chroma therapy. Besides the excellent facilities, guests staying in Garden Studios enjoy upgraded top quality services such as: complimentary drinks and canapés every evening, Valet service for unpacking of luggage, deluxe fruit basket replenished daily.

**Room Size:** 36 sq.m

**Sleeps:** 2 adults

**Suitable for:** Couples, Single Travellers



Type	View	Hotel Location	Sq. meters	Bath/ Shower	Balcony	Ideal for Single Travellers	Ideal for Couples	Ideal for Families	Extra Bed	Max. Occupancy
<b>Superior Inland View</b>  <b>Superior Sea View</b>  <b>Family Seaview</b>  <b>Beach Studio Upper Floor</b>  <b>Family Room Large Patio</b>  <b>Beach Studio Lower Floor</b>  <b>Garden Studio Upper Floor</b>  <b>Garden Studio Lower Floor</b>	Landview	Main Building	From 28	Bath or Shower		✓	✓		Full Size	2 adults & 1 child
	Seaview	Main Building	From 28	Bath or Shower	✓	✓	✓		Full Size	2 adults & 1 child
	Seaview	Main Building	39	Bath and Shower	✓			✓	Sofa Bed	3 adults or 2 adults & 2 children
	Seaview	Annex Building	39	Bath and Shower	✓	✓	✓		Full Size	2 adults & 1 child
	Seaview	Main Building	39	Bath and Shower	✓			✓	Sofa Bed	3 adults or 2 adults & 2 children
	Seaview	Annex Building	39	Bath and Shower	✓		✓	✓	Sofa Bed	3 adults or 2 adults & 2 children
	Garden	Main Building/ Adults Only wing	36	Bath and Shower	✓	✓	✓			2 adults
	Garden	Main Building/ Adults Only wing	36	Bath and Shower	✓	✓	✓			2 adults



## One Bedroom Inland View Suite

Our Inland view Suite is the ideal Suite for business executives, families and couples. The heavenly master bedroom with a super king bed is separated by sliding doors from a spacious area that serves both as living and dining room and includes a work desk. The spacious all marble bathroom of the Inland view Suite features a spa bath and separate walk-in shower with Chroma therapy. Complimentary Wi-Fi, Molton Brown amenities, Nespresso machine. A sofa bed in the living room can accommodate up to 2 children.

Special services offered to guests:

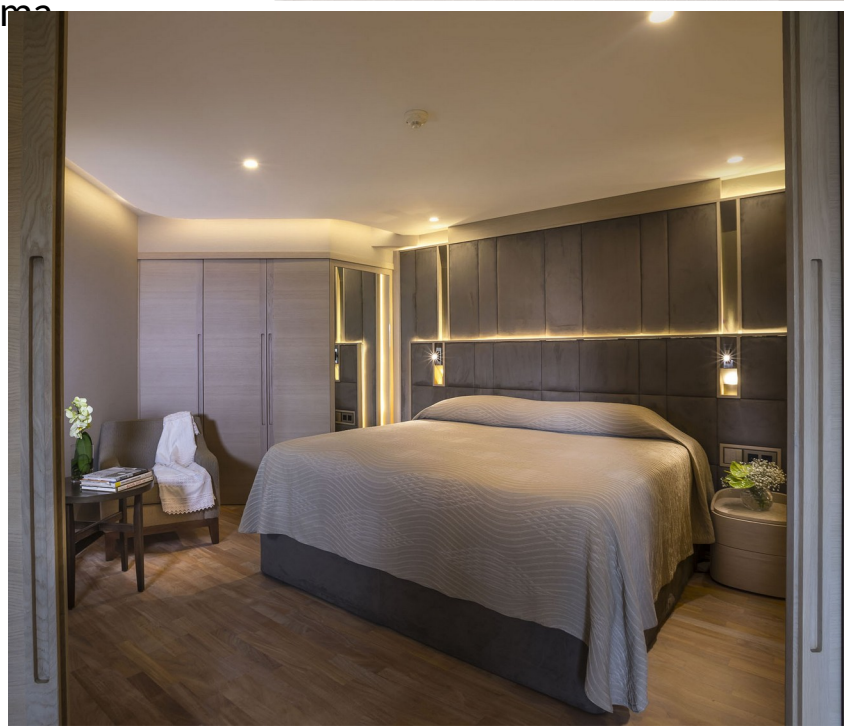
- Daily pre-dinner drink and canapes
- Fruit Basket replenished daily

**Room Size:** 48 sq.m

**Sleeps:** 2 adults or 2 adults + 2 children

**Suitable for:** Couples, Families, Single travellers

**Location:** 2<sup>nd</sup> floor





## *Junior Family Suites Sea View*

Our high-tech Junior Family Suites consist of two main rooms separated by sliding doors; a spectacular modern design master bedroom and an outrageous warm living room with a cosy salon. The Suites also feature two luxurious marble bathrooms: one accessible from the living room area and one interconnected with the master bedroom. The private seafront furnished balcony guarantees you a remarkable experience.

**Room Size:** 54 sq.m

**Sleeps:** 2 adults + 2 children or 3 adults

**Suitable for:** Couples, Families of up to four persons





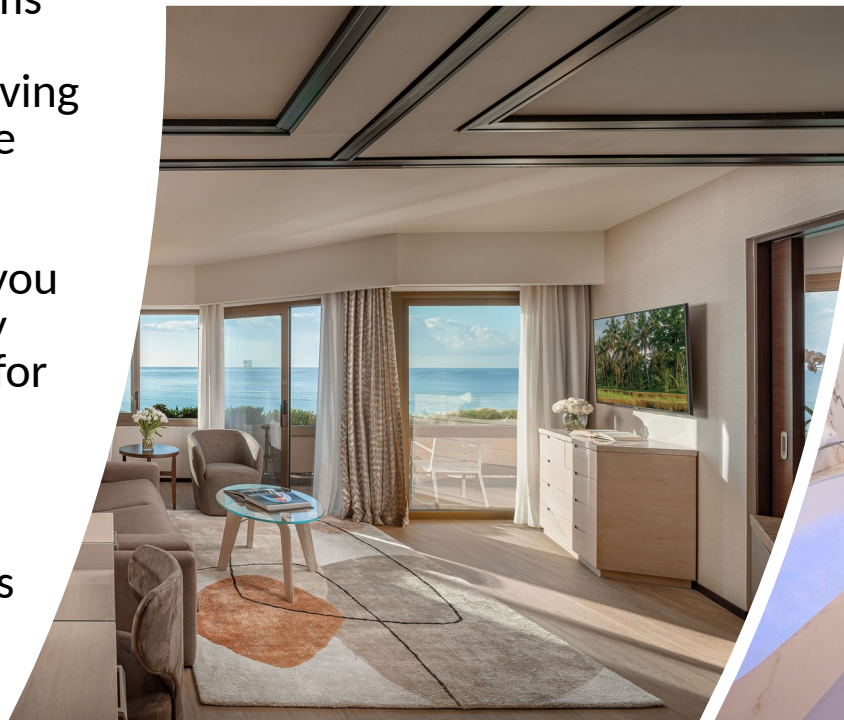
## Family Suites

Our Family Suites are offering a comfortable and luxurious option to families seeking for an extra spacious luxury Suite to exceed their expectations. These magnificent sea view Suites are larger than the Junior Family Suites and comprise of two main rooms separated by sliding doors; a spectacular modern design master bedroom and an outrageous warm living room with cosy sitting areas. The room features one spacious marble bathroom with bathtub, but its' greatest asset remains the spacious double private terrace furnished with two salons that guarantees you an unforgettable experience. Our Family Suites may feature a connecting double room, an ideal choice for large families.

**Room Size:** 57 sq.m

**Sleeps:** 2 adults + 2 children or 3 adults

**Suitable for:** Couples, Families of up to four persons





# Signature Suites

Our brand new luxury suites available as from May 2023.

**Room Size:** 56 sq.m

**Sleeps:** 2 adults + 2 children

**Suitable for:** Couples, Families of up to four persons





## Two Bedroom Family Suites Sea view

The Two Bedroom Family Suites are the newest addition to our family accommodation. The spacious suites are suitable for families of up to 6 persons and consist of two bedrooms, separate living room and two bathrooms with a total area of 90m<sup>2</sup>. These suites have opulent fully marbled bathrooms, tables with smart room technology and a state of the art Villeroy & Boch Hydro Bath-Invisible Combi pool. The living room is well-appointed with a pull-out double sofa bed (suitable for 1 adult or 2 small children).

**Room Size:** 90 sq.m

**Sleeps:** 2 adults + 4 children or 5 adults

**Suitable for:** families of up to 6 persons





## Penthouse Suites Sea View

These breath-taking seafront suites are situated on the highest floor of the main building, offering a unique view of the deep blue Mediterranean Sea to their guests. A master bedroom separated by sliding doors from a high-tech spacious living room that can accommodate all needs, a fully equipped dressing room, a spacious bathroom with both a Jacuzzi bathtub and a walk-in shower offering Chroma therapy lights and a double balcony with two salons are ready to accommodate all your needs and exceed your expectations.

**Room Size:** 56 sq.m

**Sleeps:** 2 adults

**Suitable for:** Couples, Single travellers

**Floors:** 6<sup>th</sup> floor





# Executive Penthouse Suite

## Sea View

Innovative in concept and design, the Executive Penthouse Suite is designed to deeply satisfy all your needs without limits. This Executive Suite is larger than the Penthouse Suite, with a spacious double-sink marble bathroom featuring both a colorful Jacuzzi bathtub and a walk-in shower offering Chroma therapy. The wide ergonomic master bedroom is separated with sliding doors from the chic minimal decorated living room and dining area that is made to accommodate both business and leisure guests by providing a separate guest toilet as well. The double balcony offering a direct view of the deep blue Mediterranean Sea will ensure that your stay is more enjoyable than ever.

**Room Size:** 77 sq.m

**Sleeps:** 2 adults

**Suitable for:** Couples, Single travellers

**Location:** Main Building, 6<sup>th</sup> floor





## ***Garden Suites*** ***“Adults Only”***

Innovative in concept and design the Garden Suites are on two floors with a river-like pool along the private veranda of the ground floor level. Our luxurious Garden Suites are beautifully sheltered in green surroundings, featuring an innovative luxurious design and smart room technology, they are ideal for couples or business people who seek a more sophisticated and private environment. Finely tuned with the needs of our adult guests, the Garden Suites feature a number of facilities that cover every aspect of comfort: luxury living room, functional bedroom with king-size bed, a wooden multi-functional desk, large wardrobe and coffee making facilities including a Nespresso machine. The all marble bathrooms feature a large vanity area, a Villeroy and Boch spa bath with remote control operation and a separate walk-in shower with Chroma therapy.

Besides the excellent facilities, guests staying in the Garden Suites enjoy additional VIP amenities and upgraded top quality services such as: complimentary drinks and canapés every evening, Valet service for unpacking of luggage, deluxe fruit basket replenished daily. Molton Brown amenities.





## ***One Bedroom Luxury Suite Sea View***

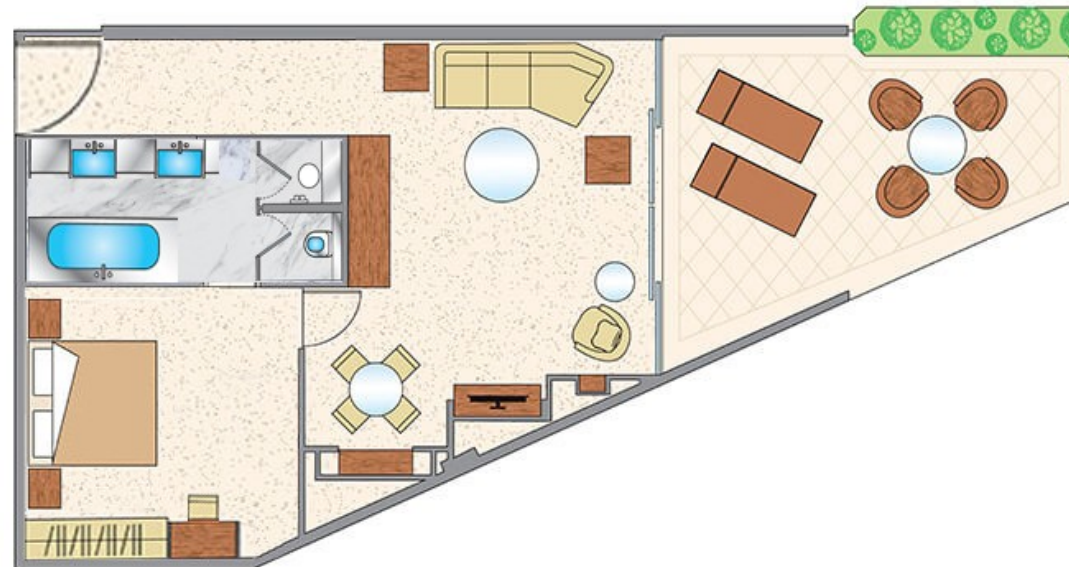
This One Bedroom Luxury Suite without any doubt is a masterpiece of living space giving you a unique homely feel through custom designed soft furnishings. An eclectic living room in "earthen" colors, a noteworthy tranquil master bedroom, a spacious marble-panelled bathroom with double sinks and both a luxurious Villeroy & Boch spa bath and a walk-in shower with chromatherapy. A large private terrace with gorgeous sea view and wooden furniture is waiting to satisfy the most demanding needs.

**Room Size:** 69 sq.m

**Sleeps:** 2 adults

**Suitable for:** Couples, Single travellers

**Location:** Main Building











## ***One Bedroom Luxury Suite Sea View***

This One Bedroom Luxury Suite blends traditional Four Seasons high standards with luxury references in a stylish, glamorous setting. The Suite comprises a master bedroom, a large living room, a bathroom and a washroom. From the spacious dining and living area, you can access your super king-size bedroom and from there you can enter the spacious marble-panelled bathroom that features a free standing Villeroy & Boch spa bath and separate shower room. The Suite offers a large private balcony where you can relax on your sunbed or enjoy breakfast taking in the view of the deep blue Mediterranean Sea.

**Room Size:** 69 sq.m

**Sleeps:** 2 adults

**Suitable for:** Couples, Single travellers

**Location:** Main Building







# One Bedroom Grand Suite

## Sea View

The feeling of comfort and well-being that the One Bedroom Grand Suite radiates will make your holiday a memorable one. This unique Suite consists of a master bedroom, a spacious living and dining area, a dressing room, one spacious marble-panelled double sink bathroom featuring a Villeroy & Boch Spa bath, a separate shower room and an additional guest washroom. The luxurious Prince Suite has a wide Mediterranean Sea view from both the master bedroom and the spacious living and dining area. It features a large wrap round balcony accessible from the living room and another private balcony accessible from the master bedroom. The Prince Suite may feature a connecting double room with sea view that makes it an ideal choice for family use.

**Room Size:** 80 sq.m

**Room Size with additional bedroom:** 113 sq.m

**Sleeps:** 2 adults or 4 adults (additional bedroom required)

Suitable for: Single travellers, Couples or Families of up to 4 persons  
(additional bedroom required)

**Location:** Main Building











# Royal Suite

## Sea View

The jewel of the Four Seasons and one of the largest Suites in Cyprus, an ultimate extravagance, a true masterpiece of the island that guarantees an unforgettable experience to its guests. Favoured by Royals and celebrities and lying in more than 330m<sup>2</sup> this unique Suite is designed to offer luxury at its best. A glamorous master bedroom with a handmade VISPRING high-quality mattress, an open-plan living room and dining area for up to eight guests, an executive office area with desk and library, a white marble bathroom with both a Jacuzzi bathtub and a private steam room with jet shower consist the interior part of the Royal Suite. At the 180m<sup>2</sup> private wooden-decked terrace, you can find a shallow fun private swimming pool and an outdoor Jacuzzi, a fully equipped section with sunbeds, a dining area and a luxuriously stylish salon surrounded by lush greenery. At the same time, you will be enjoying the panoramic views of the deep blue Mediterranean Sea, the hotels' Lagoon, swimming pools and beach area.

**Room Size:** 334 sq.m (180m<sup>2</sup> indoor and 154m<sup>2</sup> outdoor area)

**Room Size with additional bedroom:** 374 sq.m

**Sleeps:** 2 adults or 4 adults (additional bedroom required)

Suitable for: Single travellers, Couples, Families of up to 4 persons (additional bedroom required)

**Location:** Main Building







Type	View	Hotel Location	Sq. meters	Bath/ Shower	Balcony	Ideal for Single Travellers	Ideal for Couples	Ideal for Families	Extra Bed	Max. Occupancy
One Bedroom Inland View Suite	Landview	Main Building	48	Jacuzzi Bath and shower	✓	✓	✓			3 adults or 2 adults & 2 children
Junior Family Suite	Seaview	Main Building	54	Bath and Shower	✓			✓	Sofa Bed	3 adults or 2 adults & 2 children
Family Suite	Seaview	Main Building	57	Bath and Shower	✓			✓	Sofa Bed	3 adults or 2 adults & 2 children
Two Bedroom Family Suite	Seaview	Main Building	90	Jacuzzi Bath and shower	✓			✓	twin beds and sofa bed	5 adults or 2 adults and 4 children
Penthouse Suite	Seaview	Main Building	56	Jacuzzi Bath and shower	✓	✓	✓			2 adults
Executive Penthouse	Seaview	Main Building	77	Jacuzzi Bath and shower	✓	✓	✓			2 adults
Garden Suite Upper Floor	Garden	Main Building/ Adults Only Wing	77	Jacuzzi Bath and shower	✓	✓	✓			2 adults
Garden Suite Lower Floor	Garden	Main Building/ Adults Only Wing	77	Jacuzzi bath and shower	✓	✓	✓			2 adults

Type	View	Hotel Location	Sq. meters	Bath/ Shower	Balcony	Ideal for Single Travellers	Ideal for Couples	Ideal for Families	Extra Bed	Max. Occupancy
One Bedroom Luxury Suite	Seaview	Main Building	69	Jacuzzi Bath and shower	✓	✓	✓			2 adults
One Bedroom Grand Suite	Seaview	Main Building	80	Jacuzzi Bath and shower	✓	✓	✓			2 adults
Royal Suite	Seaview	Main Building	334	Jacuzzi Bath and shower	✓	✓	✓			2 adults
Two Bedroom Royal Suite	Seaview	Main Building	374	Jacuzzi Bath and shower	✓	✓	✓	✓	Double bed	4 adults

A modern restaurant with a waterfront view at dusk. The restaurant features a multi-level design with a prominent wooden slat ceiling and warm, ambient lighting. The dining area is furnished with tables and chairs, and is surrounded by lush tropical plants and palm trees. The restaurant is situated on a wooden deck overlooking a body of water, which reflects the warm lights and the twilight sky. The overall atmosphere is sophisticated and serene.

# *Four Seasons Gastronomy*



## *Sera by Ettore Botrini*

Offers the best in fresh, fine Italian cuisine. In conjunction with the renowned Greek/Italian 'Michelin Starred' Chef, Ettore Botrini, owner of the renowned Botrini's in Athens. Botrini has always created his culinary offerings with respect to seasonality, quality and the use of locally sourced fresh raw ingredients. Open for dinner only, also outdoors during the summer months (May to October).

Children: All welcome  
Dress Code: Smart Casual





# Seasons Oriental

The most famous Chinese restaurant on the island will surprise you with its unrivalled selection of the finest Cantonese taste sensations. The culinary delicacies from the Far East together with the stunning interior design preserve the restaurant's opulent heritage and elegant environment. Our Seasons Oriental Chef and Maitre'D invite you on a culinary journey with personal service and exquisite new Cantonese dishes that blend tradition with modern flair. Seasons Oriental is awarded as 'Top Notch' Restaurant at the Toque D'or Awards 2019, 2020 and best Asian Restaurant at the Cyprus Eating award 2021 & 2022

Children: 5 years and over only  
Dress Code: Smart Casual (no shorts allowed)





## **M Fusion**

M Fusion combines cuisines from East and West, including Sushi, grills, delectable salads and Ceviche. The restaurant is adjacent to the Vista Terrace, on a large deck overhanging the KOI lagoon and providing gorgeous outdoor sea views. The dining concept is based on small dishes created for sharing whilst accompanied by your favourite wine. M Fusion is awarded with one 'chefs hat' at the Toque D'or Awards 2022

**Children:** All welcome  
**Dress Code:** Smart Casual





## Tropical Restaurant

Lush green living walls really accentuate the tropical surroundings of our spacious all-day dining venue. The perfect setting for a meal or snack in a relaxing indoor or outdoor environment. Buffet breakfast, lunch & dinner. A la carte all day dining. Healthy options, vegetarian/vegan and children's' menu and buffet are available.

Cyprus BBQ Feast every Tuesday from June to October at the pool & lagoon area at the Tropical Restaurant. No charge for Half Board guests.





## ***Colors Café***

The most popular venue in Limassol. Trendy and casual, this fine Café Patisserie and Gelateria is the place to relax with friends and family. The new menu with signature cakes and ice cream as well as croissants, salads, sandwiches and a variety of home baked fresh bread will keep you coming back for more!



## **Colors Café**

The most popular venue in Limassol. Trendy and casual, this fine Café Patisserie and Gelateria is the place to relax with friends and family. The new menu with signature cakes and ice cream as well as croissants, salads, sandwiches and a variety of home baked fresh bread will keep you coming back for more!



## *Vista Bar & Terrace*

This is the main Cocktail Bar of the Hotel. Its intimate yet lively ambience with live entertainment in the evenings makes it a favourite amongst guests. The smart & sophisticated Vista Terrace is Limassol's Summer hot spot with DJ sounds 5 nights a week.





## Outdoor Bars

### ***Beach Café Bar***

Features a practical seating area for around 30 persons where guests can enjoy drinks refreshments and light snacks without venturing too far from their sunbeds on the lawns and beach (May - October)

### ***Garden Pool Bar***

Situated in the quiet area of the Garden pool is open all day (weather permitting) serving refreshments, ice creams & snacks. Reserved for “Adults Only”.

### ***Splash Bar***

Situated by the main pool, is open all day (weather permitting) serving refreshments, ice creams & snacks.





## *Garden Court*

Situated on the 1st floor Atrium, provides a comfortable setting to relax, meet, browse on your laptop or just enjoy a drink whilst watching your favorite sports on one of the large LED TV's.



# Four Seasons Conference & Event Facilities





# *The Four Seasons Ballroom*

Maximum capacity: 500 persons  
theatre style, 340 Classroom, 350 gala  
dinner, 600 Reception. The Ballroom  
now features a 6m x 3m Video wall for  
ultimate presentations.





## *The Chairman's Suite*

---

Consists of two separate Boardrooms (A & B) interconnecting to a reception secretarial area.  
**Boardroom A** has a capacity of 12 persons.  
**Boardroom B** has a capacity of 10 persons.

## *The Summit Room*

---

Maximum capacity: 150 theatre style, 100 Gala Dinner, 180 Reception.

## *The Executive Boardroom*

---

Situated on the first floor, this luxury meeting room with sea view, features an executive board table for up to 18 persons with the technical back-up to satisfy the most demanding delegates.

## *The Four Seasons Private Room*

---

A fully renovated multi-function room with modern design and amazing sea and pool view is ideal for private cocktails for up to 150 persons and luxurious private dinners for up to 80 persons.









## *Weddings*

The hotel features St George's Chapel which offers a unique setting for both Civil and Anglican wedding ceremonies and blessings, with bench seating for around 10 people and space for further seating outside. It is available to all our guests at certain times of the day for private moments of solitude, prayer or just peaceful contemplation. Wedding receptions can be arranged on the lawns in front of the chapel after the ceremony and of course wedding dinners can follow in one of our many private function areas.





**Commercial Director:**

Nicholas Aristou  
[n.aristou@fourseasons.com.cy](mailto:n.aristou@fourseasons.com.cy)

**Hotel Manager:**

Costas Nicolaou  
[costas.n@fourseasons.com.cy](mailto:costas.n@fourseasons.com.cy)

**F&B Group Manager:**

Yiannos Gregoriou  
[y.gregoriou@fourseasons.com.cy](mailto:y.gregoriou@fourseasons.com.cy)

**F&B Manager:**

Leonidas Leonidou  
[l.leonidou@fourseasons.com.cy](mailto:l.leonidou@fourseasons.com.cy)

**Telephone:**

+357 2585 8000

**WhatsApp:**

+357 9985 8588

**Email:**

[enquiries@fourseasons.com.cy](mailto:enquiries@fourseasons.com.cy)

**Website:**

[www.fourseasons.com.cy](http://www.fourseasons.com.cy)

**Instagram:**

[s/](https://www.instagram.com/fourseasons/cyprus/)

<https://www.instagram.com/fourseasons/cyprus/>

