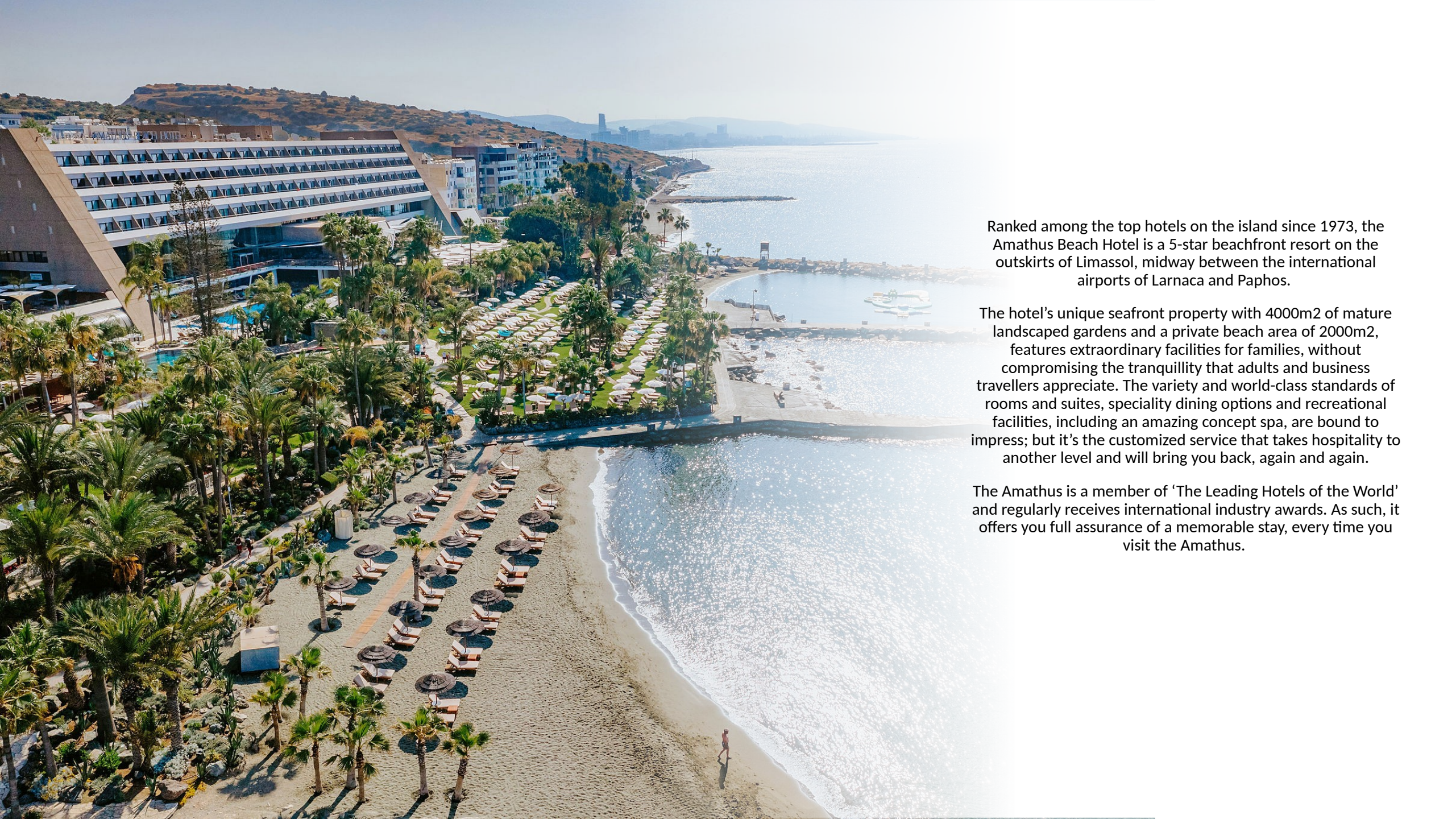



AMATHUS
BEACH HOTEL
CYPRUS


LEADING
HOTELS®



Ranked among the top hotels on the island since 1973, the Amathus Beach Hotel is a 5-star beachfront resort on the outskirts of Limassol, midway between the international airports of Larnaca and Paphos.

The hotel's unique seafront property with 4000m2 of mature landscaped gardens and a private beach area of 2000m2, features extraordinary facilities for families, without compromising the tranquillity that adults and business travellers appreciate. The variety and world-class standards of rooms and suites, speciality dining options and recreational facilities, including an amazing concept spa, are bound to impress; but it's the customized service that takes hospitality to another level and will bring you back, again and again.

The Amathus is a member of 'The Leading Hotels of the World' and regularly receives international industry awards. As such, it offers you full assurance of a memorable stay, every time you visit the Amathus.







Rooms - Suites

- [Superior Inland View](#)
- [Superior Sea View](#)
- [Luxury Sea View Room](#)
- [Luxury Sea View Suite](#)
- [Junior Suites Ground Floor With Private Pool](#)
- [Junior Suites Sea View Upper Floor](#)
- [Two Bedroom Suite](#)
- [One Bedroom Grand Sea View Suite](#)
- [Amathus Residences](#)
- [Compare Roomtypes](#)



Dining Facilities

- [Kalypso Restaurant](#)
- [Kalypso Garden](#)
- [Limanaki Fish Restaurant](#)

Bars

- [Athina Lounge & Lobby](#)
- [Helios & Fresh Bar](#)



Conferences, Weddings and Events

The multi-purpose function hall with an area of 618m² can be arranged, equipped and decorated to accommodate any corporate or social event. One day it could serve as an elegant ballroom, and the next day as an international conference venue with a business centre. Equally formal and functional, it is equipped with the latest sound and lighting system. Maximum capacity is 300 conference delegates theatre style, 350 guests for a banquet or a dinner dance. For smaller gatherings, the hall can be subdivided using moveable, sound-proof partition walls. Alternatively, a number of meeting rooms can be booked for 10 to 50 guests and can be combined to accommodate up to 200 guests. All the hotel's function rooms enjoy natural daylight, and many face the sea.

A proven track record of hosting successful high-profile functions and events demonstrates the balance of outstanding facilities and the services of an experienced food & beverages and banqueting team.







A
AMATHUS
BEACH HOTEL





Amathus Spa & Wellness Centre

At the Amathus Spa & Wellness Centre, 2000m² are dedicated to beauty, health and wellbeing. The designer spa is a world in itself, inspired by wellness philosophies from East and West. Based on a concept that embraces the four elements – air, earth, fire and water – the spa's menu includes single face and body treatments, and full-day spa journeys. Specialized treatments contribute to a healthy pregnancy, stress relief, or optimized athletic performance.

The separate Gym with a huge glass wall looking over the hotel's pool and beach, includes state-of-the-art Technogym strength and cardiovascular equipment.

The Spa & Wellness Centre can add an element of wellness to any holiday – or even be the main purpose of your visit to the Amathus.





Pools

Four pools are designed for all ages and all seasons:

- The main outdoor pool
- Indoor pool
- Adults only pool
- Family pool with fun features





Family Facilities

The hotel's slogan - 'Indoor luxury, outdoor paradise' - is not just reserved for couples, but also applies to families with children of all ages. All family facilities are concentrated in one area of the hotel's vast property, so parents can allow their children to enjoy themselves freely without disrupting the tranquillity of the adult areas. To make travelling with the family easier and to minimize luggage, the hotel provides special family assistance upon request, including bottle warmer, sterilizer, baby bath, changing table, plug safety sockets and a highchair in your room. Any necessary baby supplies can be ordered in advance and will be available upon arrival.



Pelican Kids Club

The Pelican Kids Club welcomes younger children, offering them fun and educational activity in a supervised environment. The facility includes an outdoor playground and meets the highest safety standards.







A modern hotel room with a large bed, a woman on a balcony, and a view of the ocean. The room features a large bed with white linens, a desk with a chair, and a balcony with a view of the ocean. A woman in a white dress stands on the balcony. The room is well-lit with warm lighting.

Amathus Rooms & Suites



Superior Inland View

The 31 m² Superior inland view rooms offer a haven of comfortable space ideal for families with young children. Well-appointed with quality furnishings and stylish décor in sandy gold, brown and cream colour nuances, these beautiful rooms offer quality accommodation and discreet luxury to 2 adults and 2 children (max). Please note that this room does not feature a balcony.





Superior Sea View

The 26 m² Superior sea view rooms offer breath-taking panoramic view of the Mediterranean Sea and the hotel's celebrated grounds and gardens. With the latest design and technology, these Superior rooms accommodating up to 2 adults and 1 child, add another dimension to the Amathus experience. Their balconies, appointed with teak furnishings, are perfect for intimate dining and catching the last of the afternoon sun.





Luxury Sea View Room

Our newest room type is a spacious 47m², on the 1st floor, with fabulous views of the gardens and sea. These rooms come with a sofa bed so can accommodate 2 adults and 2 children comfortably, the luxurious bathroom runs the entire length of the room and boasts a sea view facing bathtub placed tantalisingly in front of the balcony.





Luxury Sea View Suite

Located on the 3rd floor with 2 balconies, our brand new one Bedroom Luxury Seaview Suite of 52m², consists of two rooms separated by a sliding door, a spectacular modern design master bedroom and a warm living room with a cosy salon.

These Suites feature a luxurious marble bathroom with separate bath, shower, and double sinks as well as a matching guest toilet accessible from the living room area. The sofa bed in the living room can be transformed to a double bed, making these suites ideal for families with up to 2 children as well.

The private furnished balconies facing the Mediterranean, guarantee a remarkable experience

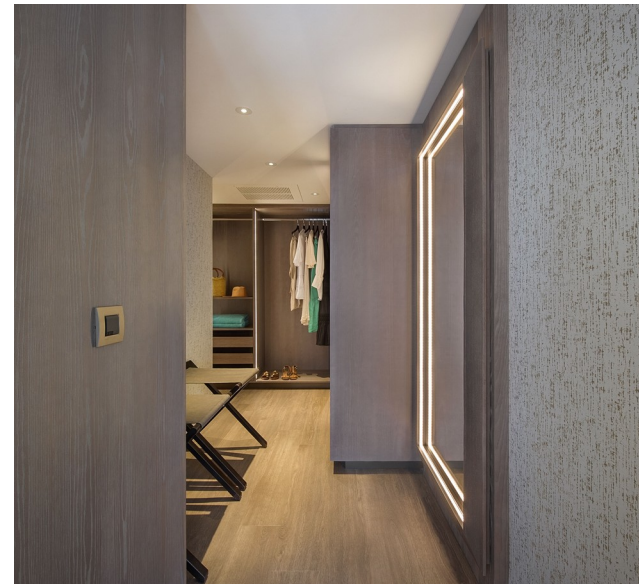






One Bedroom Grand Sea View Suite

Located on the 3rd floor, occupying 78m², this Suite represents luxury living at its best. It features an exceptionally designed and furnished bedroom and an ensuite bathroom with separate jacuzzi bath and shower. The living area consists of a dining room, a bar with stools, seating area, large walk-in wardrobe as well as a washroom for guests. A second bedroom can be added to the suite by booking it together with an interconnecting superior sea view room. The 3 verandas offer panoramic views to the sea and hotel gardens. Sleeps 2 Adults.











Two Bedroom Suite

Class, elegance and contemporary convenience meet at the beautiful Two Bedroom Suites of the Amathus 5 star hotel in Cyprus. Situated on the second and fourth floor of this wonderful beach hotel in Limassol, the Two Bedroom suites offer a luxurious retreat of sheer relaxation. Each luxury suite with sea view is brilliantly designed and decorated embracing an elevated sense of comfort with elegant Cassina furnishings and white marble floors.

Sleeps up to 4 adults & 1 child or 2 adults and 3 children. Occupying an area of 78 m² every luxury suite with sea view ensures a tranquil escape.





Junior Suites Ground Floor With Private Pool

Located on the ground floor of our brand-new Residence building, our new Junior Suites are a superb accommodation product, unique in Limassol. The modern yet homely design consists of a bedroom and sitting area within the room leading to an outdoor private pool with an extended private garden area.

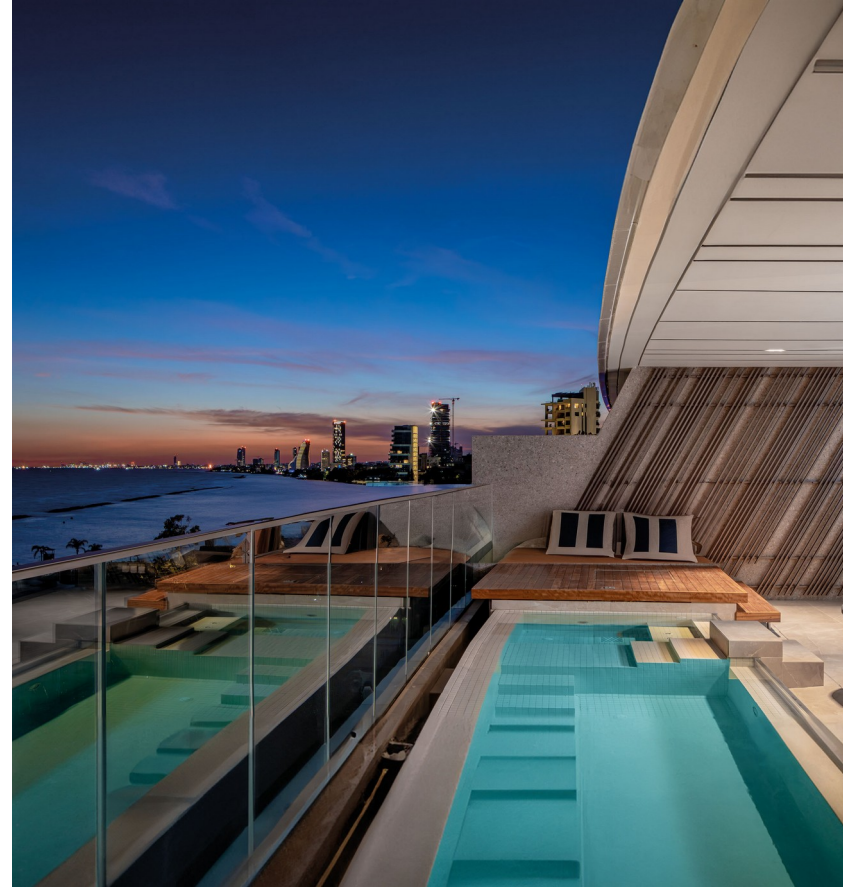
These Suites feature a luxurious marble bathroom with separate bath and shower. The sofa bed in the living room can be transformed to a double bed, making these suites ideal for families with up to 2 children as well. The elevated private facilities offered by these suites, facing the Mediterranean, provide a remarkable experience second to none. Capacity: Max. 3 adults or 2 adults & 2 children



Junior Suites Sea View Upper Floor

Located on the first floor of our brand-new Residence building, our new Junior Suites are a superb accommodation product, unique in Limassol. The modern yet homely design consists of a bedroom and sitting area within the room leading to an outdoor private pool.

These Suites feature a luxurious marble bathroom with separate bath and shower. The sofa bed in the living room can be transformed to a double bed, making these suites ideal for families with up to 2 children as well. The elevated private facilities offered by these suites, facing the Mediterranean, provide a remarkable experience second to none.



Amathus Residences

The Amathus Residences building opened in 2024 features one, two & three bedroom residences all with en-suite and some with private pool. The elegant interior captures the essence of contemporary Mediterranean living right on the beach, offering to its residents a secluded place where they can indulge in a truly unique living experience. High ceilings create a unique sense of space. Each Residence has a fully equipped kitchen, superlative finishes & materials match quality with finesse, and after sunset ambient lighting replaces the warmth of abundant natural daylight with stunning views across the city and sea.

Type	View	Hotel Location	Sq. meters	Bath/ Shower	Balcony	Ideal for Single Travellers	Ideal for Couples	Ideal for Families	Extra Bed	Max. Occupancy
Superior Inland View	Landview	Main Building	31	Bath or Shower		✓	✓	✓	Sofa Bed	2 adults & 2 children or 3 adults
Superior Sea View	Seaview	Main Building	26	Bath or Shower	✓	✓	✓		Full Size	2 adults & 1 child
Luxury Sea View Room	Seaview	Main Building	47	Bath and Shower	✓		✓	✓	Sofa Bed	3 adults or 2 adults & 2 children
Luxury Sea View Suite	Seaview	Main Building	52	Bath and Shower	✓	✓	✓	✓	Sofa Bed	3 adults or 2 adults & 2 children
Junior Suite Upper Floor, Private Pool	Seaview	Amathus Residences	70	Bath and Shower	✓	✓	✓	✓	Sofa Bed	3 adults or 2 adults & 2 children
Junior Suite Ground Floor, Private Pool	Seaview	Amathus Residences	102	Bath and Shower	✓ Terrace & Garden	✓	✓	✓	Sofa Bed	3 adults or 2 adults & 2 children
Two Bedroom Sea View Suite	Seaview	Main Building	78	Bath and Shower	✓			✓	Full size	4 adults & 1 child or 2 adults & 3 children
One Bedroom Grand Suite	Seaview	Main Building	78	Bath and Shower	✓	✓	✓			2 adults

An outdoor dining area at dusk, featuring a large white canopy structure supported by white pillars. The floor is made of dark wood. Numerous wooden tables and chairs are arranged, each set with glassware and plates. In the background, there are palm trees and a view of the ocean under a twilight sky. A large, vibrant pink bougainvillea bush is on the right side of the frame.

Amathus Gastronomy



Kalypso Restaurant

Kalypso Restaurant is an all-day dining room on the pool level. The new refined and sophisticated design combines elegant wood, marble and lush greenery hanging from the ceilings, making the restaurant the perfect setting for a snack or meal. The lavish breakfast spread with live cooking stations is included in your terms of stay. Lunch features an international selection of flavours.





Kalypso Gardens

(Open May - October)

Enter the Kalypso Gardens Restaurant and let its natural environment provide you with a memorable experience. A blend of glass and stainless steel is offset by the timeless aesthetic of the blossoming bougainvillea plants that fan out in their unique steel structures complementing the uninterrupted views to the Mediterranean Sea. Seven different theme nights during the week, each one with its own character, dishes and live cooking stations, will enhance your dining experience.





Limanaki Fish Restaurant

(Open May - October)

Situated just steps away from the Mediterranean Sea, the Limanaki is the ultimate fish restaurant of Cyprus. The fish served for dinner at the restaurant, is the morning catch of the day from the local fishermen. Beyond the fresh fish you can also enjoy a wide array of oysters and seafood dishes always prepared with the simplicity of pure Mediterranean cuisine, yet at the highest levels of gastronomy.

- Children policy: All welcome
Dress Code: Smart Casual





Athina Lounge & Lobby

The new signature lobby bar and terrace at the Amathus will attract you with its chic décor and the panoramic terraces – even before you notice the sea view or explore the comprehensive all-day menu. It's the place to meet for anything from a midmorning coffee to evening drinks, for a light lunch, a salad or sushi bites. After sunset, the lounge becomes trendier and its ambience is enhanced by the tunes of live music or DJ.







Helios & Fresh Bar

(Open May - October)

Even the best beach is not complete without a well-stocked beach bar. Helios was created to offer you healthy refreshment, including freshly squeezed juices and smoothies, while you absorb the sun. For something more filling without leaving the beach and gardens, the Fresh Bar hits the spot. Crisp salads, sandwiches, and homemade ice creams are served on the new deck or delivered to your sunbed.





General Manager:

Giorgos Daskalakis, gdaskalakis@amathushotel.com

Group Commercial Director:

Nicholas Aristou, n.aristou@fourseasons.com.cy

Rooms & Revenue Manager:

Antonio Cassera, acassera@amathushotel.com

Group F&B Manager:

Mr. Yiannos Gregoriou, y.gregoriou@fourseasons.com.cy

Telephone:

(+357 – 25) 832000

Email:

amathuslim@amathushotel.com

Website:

<https://www.amathuslimassol.com>