



# Signature Suites & Club Suites

A World Away From Your Everyday

ATLANTIS  
THE PALM, DUBAI





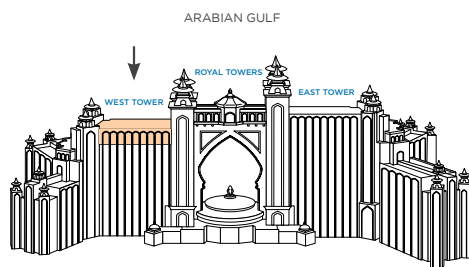


# Presidential Suites (220sqm)

## At a Glance

- 22sqm stretch of balcony with views of Palm Island
- Sun loungers, table and chairs for outdoor dining
- Dining table seating 8
- 24-hour dedicated butler
- Butler's pantry
- Hallway and half bathroom
- Large living room
- Master bedroom
- Luxurious en-suite his and hers bathrooms with jetted tubs
- Interconnecting room
- Part of the seven Signature Suites

## Floor Plan



SITUATED ON THE 18 AND 19 FLOOR  
IN THE WEST TOWER  
PALM ISLAND

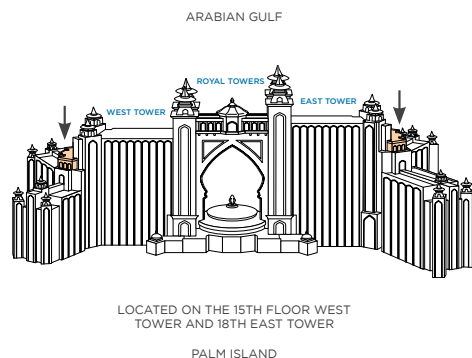


# Grand Atlantis Suites (429sqm)

## At a Glance

- Balcony (246sqm) stretching three corners offering unique views of Palm Island and Arabian Sea
- Grand lobby
- Corridor entrance
- Fully equipped kitchen
- 24-hour dedicated butler
- Dining table seating 8
- Hallway and half bathroom
- Large living room
- Master bedroom
- Luxurious en-suite his and hers bathrooms with jetted tubs
- Guest accommodation
- Interconnecting room
- Part of the seven Signature Suites

## Floor Plan

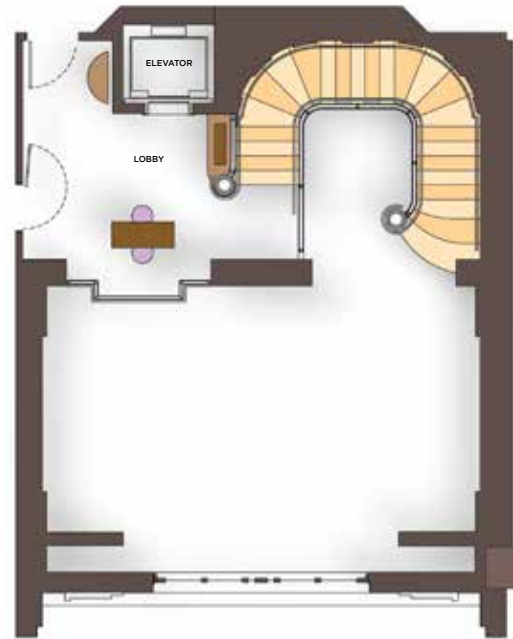




# The Underwater Suites (165sqm)

## At a Glance

- Suites cover three floors
- Living room view overlooks The Ambassador Lagoon
- Bedroom/bathroom floor-to-ceiling windows looking directly into The Ambassador Lagoon
- Private elevator
- 24-hour dedicated butler
- Butler's pantry
- Hallway and half bathroom
- Large living room
- Separate TV room/Majlis
- Part of the Seven Signature Suites



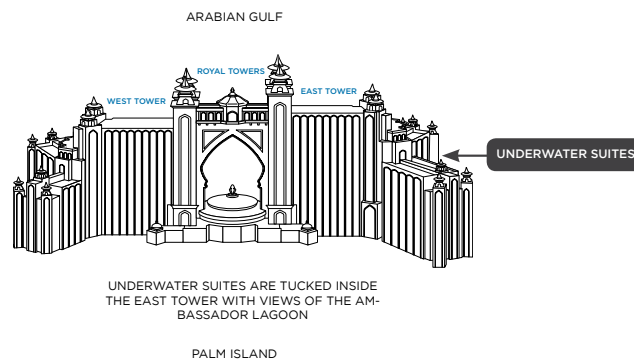
1<sup>ST</sup> FLOOR



2<sup>ND</sup> FLOOR



3<sup>RD</sup> FLOOR



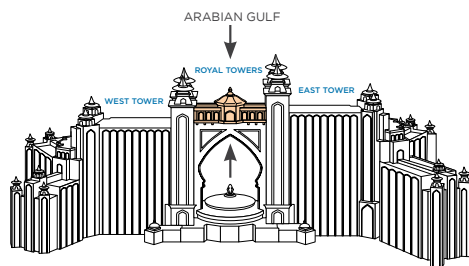
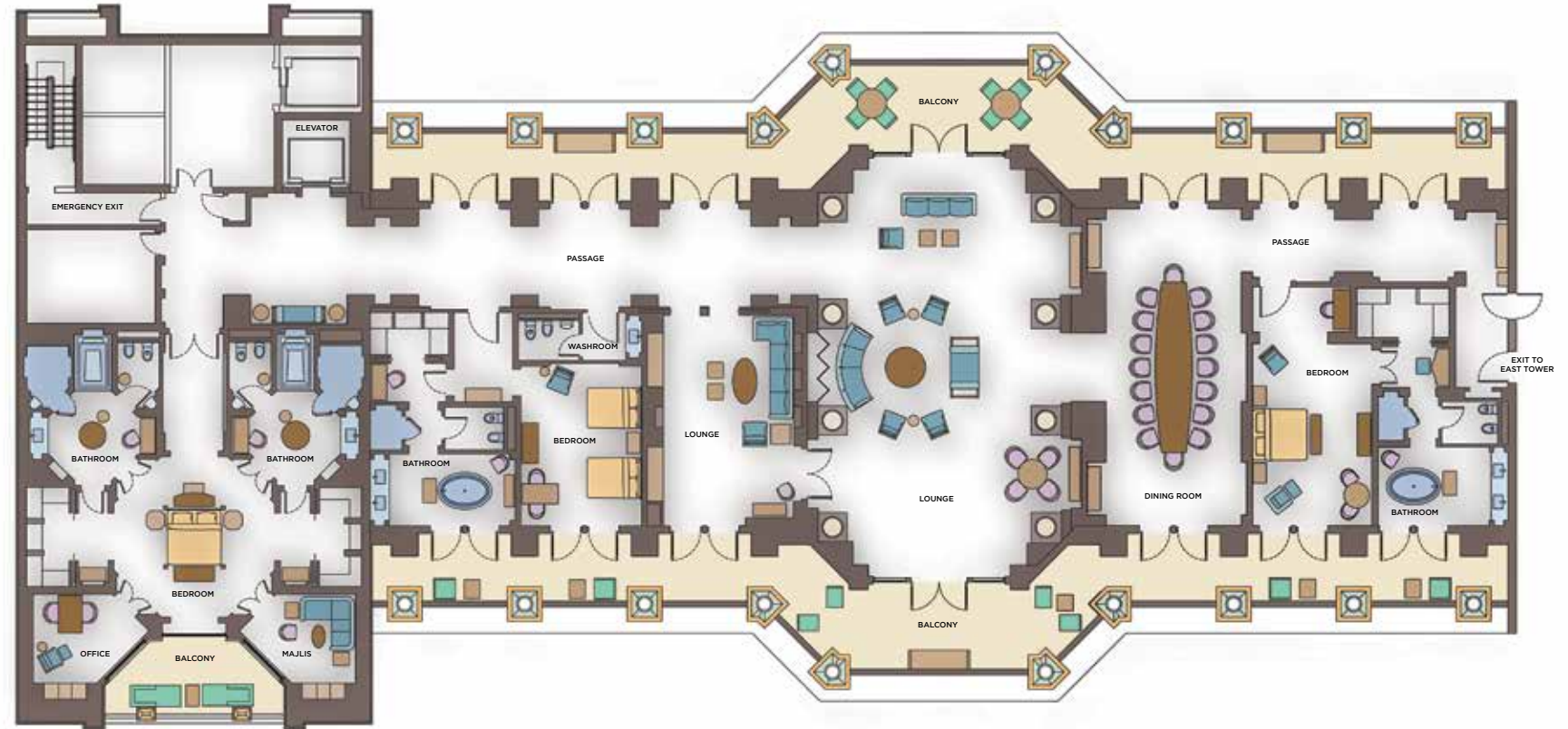


# Royal Bridge Suite (924sqm)

## At a Glance

- Floor-to-ceiling views of Palm Island and Arabian Gulf from every window
- Interlinks the two Royal Towers
- Private elevator
- Bar set up prior to arrival as per guest's request
- Private chef
- Fully equipped kitchen
- Gold Leaf dining table seating 16
- In-room dining, plated and buffet services available
- Two 24-hour dedicated butlers
- Library/media centre
- Master bedroom
- Luxurious en-suite his and hers bathrooms with jetted tubs
- Three bedroom suites all with en-suite bathrooms
- Large living room
- Option to book out 22nd floor
- Part of the seven Signature Suites

## Floor Plan



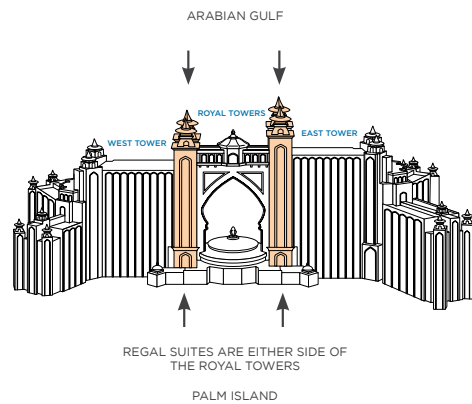


# Regal Club Suites (164sqm)

## At a Glance

- Balcony with chairs and sun loungers
- Spacious living and dining area
- Master bedroom
- Majlis in the bedroom
- Luxurious double vanity bathroom with large oval free standing bath
- Office area with partition
- Private pantry
- Separate cloakroom
- Interconnecting room

## Floor Plan



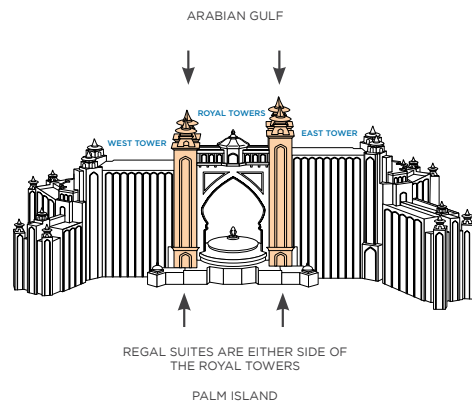


## 2 Bedroom Regal Club Suites (209sqm)

### At a Glance

- Separate guest room and private terrace
- Two queen size beds with a beautifully fitted full bathroom
- Balcony with chairs and sun loungers
- Spacious living and dining area
- Master bedroom
- Majlis in the bedroom
- Luxurious double vanity bathroom with large oval free standing bath
- Office area with partition
- Private pantry
- Separate cloakroom
- Interconnecting room

### Floor Plan



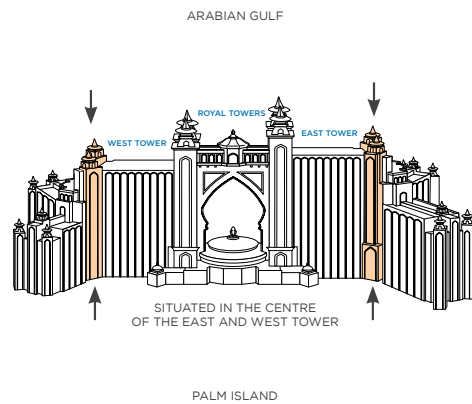


# Terrace Club Suites (94sqm)

## At a Glance

- Spacious balcony with dining table for Alfresco dining and sunbeds
- Luxurious double vanity bathroom with large oval free standing bath
- Spacious living room
- Separate cloakroom
- Interconnecting room
- Tea/coffee maker

## Floor Plan



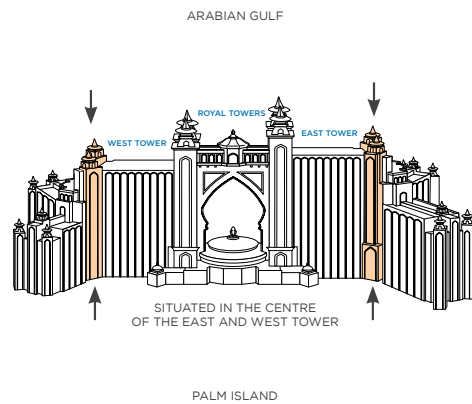
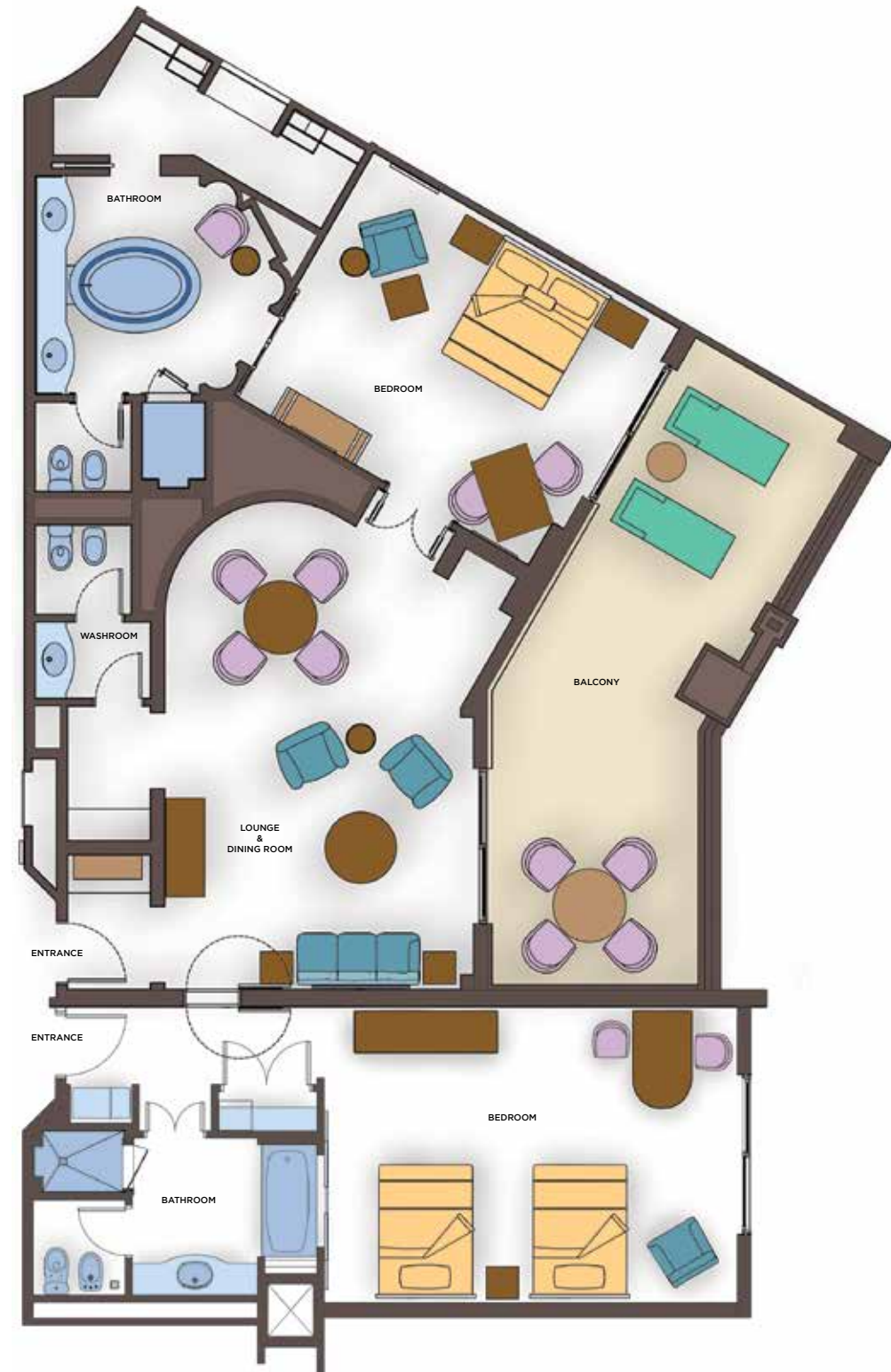


## 2 Bedroom Terrace Club Suites (139sqm)

### At a Glance

- Complete sun loungers and al fresco dining area
- Two queen size beds with a beautifully fitted full bathroom
- French balcony with seating
- Luxurious double vanity bathroom with large oval free standing bath
- Spacious living room
- Separate cloakroom
- Interconnecting room
- Tea/coffee maker

### Floor Plan



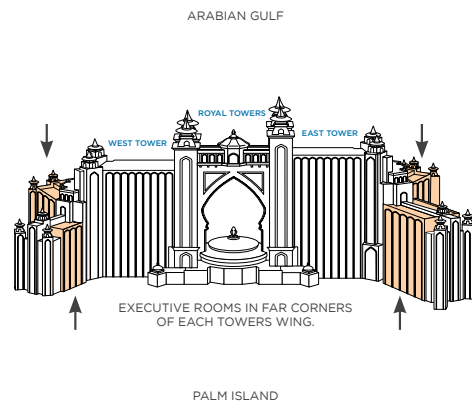


# Executive Club Suites (101sqm)

## At a Glance

- Master bedroom
- Luxurious double vanity bathroom with large oval free standing bath
- Spacious living room
- Dining table seating 4
- Balcony with dining area
- Separate cloakroom
- Interconnecting room

## Floor Plan



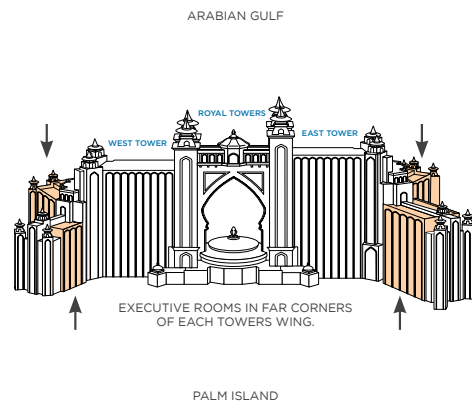
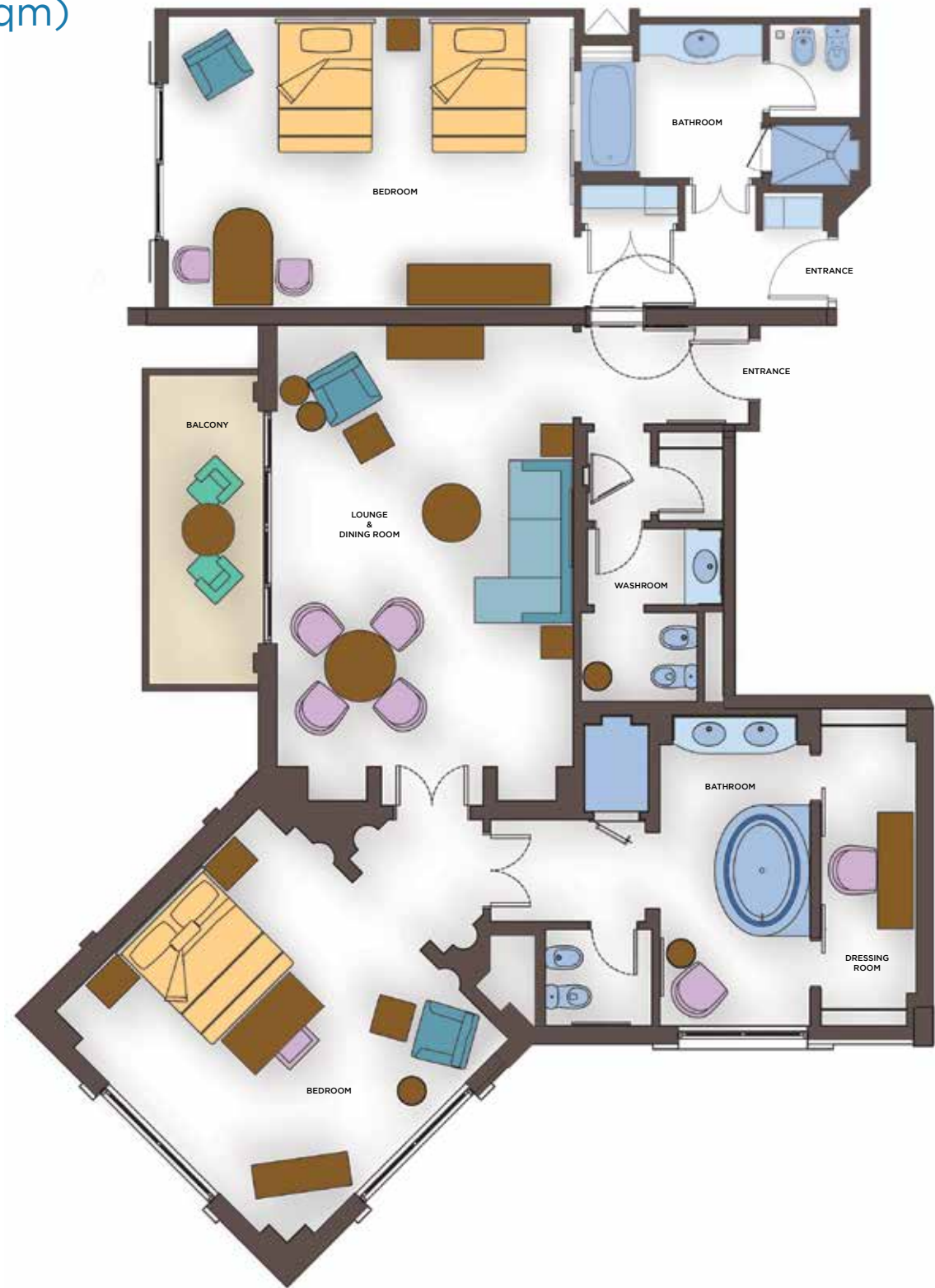


## 2 Bedroom Executive Club Suites (146sqm)

### At a Glance

- Two queen size beds with a beautifully fitted full bathroom
- Master bedroom
- Luxurious double vanity bathroom with large oval free standing bath
- Spacious living room
- Dining table seating 4
- Balcony over looking the beach or the Arabian Sea
- Separate cloakroom
- Interconnecting room

### Floor Plan





# ATLANTIS

THE PALM, DUBAI

For more information visit [atlantisthepalm.com](http://atlantisthepalm.com)

 Atlantis The Palm  @atlantisthepalm  @ATLANTIS

P.O. Box 211222, Dubai, U.A.E. Crescent Road, The Palm Island, Dubai  
Tel: +971 4 426 0000 | Fax: +971 4 426 0005 | Email: [info@atlantisthepalm.com](mailto:info@atlantisthepalm.com)