

ATLANTIS

THE PALM, DUBAI

Meetings. Incentives. Conferences. Events



Atlantis, The Palm is a 1,544-room ocean-themed destination resort that will take you a world away from your everyday. Spectacularly situated on the crescent of Dubai's iconic Palm Island, this majestic resort is home to mesmerising experiences that will give you a holiday of a lifetime.

Thrill-seekers can enjoy record-breaking rides at Atlantis Aquaventure Waterpark, the world's largest waterpark with a total of 105 slides, attractions, and experiences. Take the Leap of Faith and slide through a shark-filled lagoon or enjoy over 2 kilometres of river rapids in the Lazy River. Children can play at Splashers, the biggest kid's only waterpark experience in the Middle East.

Those looking to discover our spectacular marine animals can wander through The Lost Chambers Aquarium and witness the myth of Atlantis brought to life through a maze of underground tunnels offering underwater views of 65,000 marine animals. Those looking to make new friends can head down to the most sophisticated marine mammal habitat on the planet and interact with our charming Indo-Pacific bottlenose dolphins at Dolphin Bay or our furry South African fur seals at Sea Lion Point. Guests staying at Atlantis, The Palm benefit from daily complimentary access to Atlantis Aquaventure Waterpark and The Lost Chambers Aquarium and enjoy exclusive rates at Dolphin Bay and Sea Lion Point during their stay.

For food lovers, Atlantis, The Palm is an extraordinary culinary destination, with award-winning restaurants and celebrity chef experiences from Gordon Ramsay, Nobu Matsuhisa. Kids and teens can take a break from their parents with Atlantis Explorers Club for children ages 4 to 12. Mum and dad unwind from the daily grind in one of the 27 treatment rooms at the award-winning AWAKEN Spa & Fitness. For those looking to bring a piece of Atlantis, The Palm home, The Avenues takes care of all your shopping needs with some of the world's finest luxury boutiques to stores that cater for all the family holiday essentials.

Hotel Features

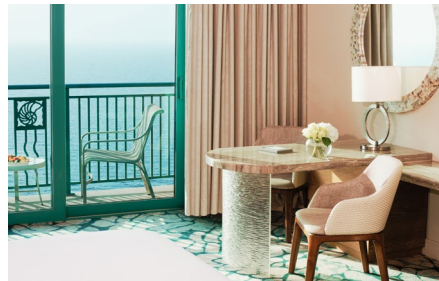
- 1,544 Rooms and Suites
- 166 Suites
- 31 physically challenged rooms
- 24-hour reception
- 24-hour concierge
- 22 accommodation floors
- Imperial Club Lounge and Beach
- 7 elevators in the East Tower
- 6 elevators in the West Tower
- 36 Restaurants, Bars & Lounges
- 24-hour Room Service
- Conference & events facilities
- Aquaventure Waterpark – Largest waterpark in the world
- The Lost Chambers Aquarium
- 3 outdoor swimming pools
- Dolphin Bay
- Sea Lion Point
- Tennis courts & academy
- 2 outdoor playgrounds
- Atlantis Explorers Club (ages 4 to 12)
- Babysitting services
- AWAKEN Spa and Fitness Centre
- AWAKEN Style
- Acqua Di Parma & Barber Services
- Nailology
- Covered valet parking
- Helipad
- Complimentary shuttlebus service to Malls
- Limousine services
- Porter/bellman and in-house luggage storage
- International plug
- Retail shopping
- Hospitality Lounge and Business Centre
- 2 kilometres of pristine beach
- Dry cleaning and laundry service

Guest Rooms and Suites

NO. OF ROOMS: 1,544

ROOM TYPE	NO. OF ROOMS	ROOM SIZE
Ocean Guest Room	532	46 sqm
Palm Guest Room	460	
Family Room	60	92 sqm
Imperial Club Room	326	46 sqm
Terrace Suite	30	94 sqm
Skyline Suite	19	101 sqm
Regal Suite	8	164 sqm
Two Bedroom Terrace Suite	52	140 sqm
Two Bedroom Skyline Suite	23	147 sqm
Two Bedroom Regal Suite	28	210 sqm
Presidential Signature Suite	2	220 sqm
Underwater Signature Suite	2	165 sqm
Grand Atlantis Signature Suite	2	429 sqm

All rooms offer either partial views of the Arabian Sea or Palm Island.
All rooms equipped with safes, iron, iron board, tea and coffee making facilities, bath robes, separate bath and shower, 24hr room service.



Guest Rooms

Our Ocean and Palm Rooms offer partial or full views of the tranquil Arabian Sea or iconic Palm Island. These rooms come with a king bed or two-queen beds, elegant bathrooms with a walk-in shower and separate bath as well as a host of amenities:



Comfortable seating area



Free Wi-Fi



Blow dryer



Full Balconies



Digital Cable on Flat Screen TV



24-hour room service



Iron



Mini Bar and tea/coffee facilities



Shower and separate bath

Ocean King Room – 45 – 47 sqm

Let the tranquillity of the Arabian Sea elevate your stay. Our Ocean King Rooms come with partial or full views of the Arabian Sea and a spacious king-sized bed.

Ocean Queen Room – 45 – 47 sqm

Soak-in the views of the deep blue waters of the Arabian Sea. Our Ocean Queen Rooms come with partial or full views of the Arabian Sea and two queen-sized beds.

Palm King Room – 45 – 47 sqm

Stunning views of Palm Island make for an iconic Dubai experience. Our Palm King Rooms come with partial or full views of Palm Island and a spacious king-sized bed.

[VIEW VIRTUAL TOUR](#)

Palm Queen Room – 45 – 47 sqm

Breath-taking by day and dazzling by night, make the most of our exclusive vantage point on Palm Island. Our Palm Queen Rooms come with partial or full views of Palm Island and two queen-sized beds.

[VIEW VIRTUAL TOUR](#)

Two Bedroom Family Room

Guaranteed interconnected Ocean King and Ocean Queen rooms.



Imperial Club

Our Imperial Club rooms offer guests the chance to add a little luxury to their stay. In addition to the benefits of our Ocean and Palm Rooms, Imperial Club rooms come with exclusive benefits across the resort. Guests will enjoy exclusive all-day access to the Imperial Club Lounge which includes complimentary morning refreshments and selected alcoholic beverages, all-day snacks, afternoon tea and happy hour with canapes and drinks. Relaxation awaits with exclusive access to the Imperial Club Beach and extra pampering time with access to the sauna, steam room and jacuzzi. Our Imperial Club rooms come with either one king or two queen beds.



Comfortable seating area



Free Wi-Fi



Blow dryer



Full Balconies



Digital Cable on Flat Screen TV



24-hour room service



Iron



Mini Bar and tea/coffee facilities



Shower and separate bath

Imperial Club King Room

Our Imperial Club King Rooms come with a spacious king bed and partial or full views of the tranquil Arabian Sea or the iconic Palm Island. As an Imperial Club guest, you are entitled to exclusive Imperial Club benefits across the resort.

Imperial Club Queen Room

Our Imperial Club Queen Rooms come with two queen-sized beds and partial or full views of the tranquil Arabian Sea or the iconic Palm Island. As an Imperial Club guest, you are entitled to exclusive Imperial Club benefits across the resort.





Regal Suite



Terrace Suite



Skyline Suite

Suites

You will experience a new world of luxury when staying in one of our Suites, available in 1 and 2-bedroom (including connecting queen room) options, including connecting queen rooms. With complimentary luxury airport transfer and a private check-in lounge, you'll enjoy priority service from our dedicated VIP team. In addition to all Imperial Club benefits, Suite guests enjoy the privilege of access to the steam, sauna and jacuzzi within the spa facilities.



Comfortable seating area



Free Wi-Fi



Blow dryer



Full Balconies



Digital Cable on Flat Screen TV



24-hour room service



Iron



Mini Bar and tea/coffee facilities



Shower and separate bath

Terrace Suite - 94 sqm

Enjoy a comfortable and scenic stay, with a luxurious living space and the largest furnished terrace balcony of our Suites range. The private terrace offers a perfect base to gaze at the uninterrupted views of the Arabian Sea or Palm Island while sunbathing on sun loungers or watching the sunset with the perfect al fresco dining set up.

[VIEW VIRTUAL TOUR](#)

Skyline Suite - 101 sqm

Relax, unwind and feel right at home in this luxurious furnished suite, featuring an expansive living and dining area. Enjoy the panoramic views from your balcony, bedroom or bathroom, this Suite has the best view of the Dubai glittering skyline.

[VIEW VIRTUAL TOUR](#)

Regal Suite - 164 sqm

Go beyond the depths of luxury with a stay in the Regal Suite for the full royal experience. Spanning 164 square metres, this lavish suite features plush, spacious living areas, a large balcony with sweeping views and a magnificent master bedroom with its own majlis. The suite is sure to take your breath away, featuring a free-standing oval bathtub and chaise lounge creating a space for absolute relaxation and indulgence.

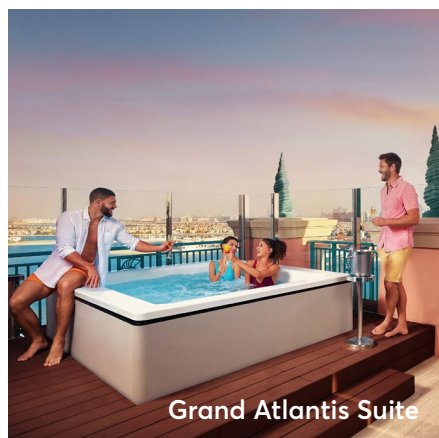
[VIEW VIRTUAL TOUR](#)



Underwater Suite



Presidential Suite



Grand Atlantis Suite

Signature Suites

Imagine waking up to 65,000 marine animals or experiencing the truly iconic Grand Atlantis Suite with a private jacuzzi on the terrace. Atlantis Signature Suites redefine luxury, boasting the most lavish interiors and 24-hour dedicated butler service to fulfil every need and desire.



Comfortable seating area



Free Wi-Fi



Blow dryer



Full Balconies



Digital Cable on Flat Screen TV



24-hour room service



Iron



Mini Bar and tea/coffee facilities



Shower and separate bath

Presidential Suite - 220sqm

Presidential Suite balances elegance and grandeur in a truly remarkable setting. With an expansive living room, lavish dining area, separate office space and a walk-in closet, this signature suite is ideal for those seeking an extra level of comfort and luxury.

[VIEW VIRTUAL TOUR](#)

Underwater Suite - 165sqm

Enter into the most romantic hideaway imaginable, surrounded by the majestic waters of the Ambassador Lagoon. With floor-to-ceiling windows in the bedroom and bathroom, you will be simply mesmerised by the dramatic ancient ruins of the mythical lost city and its 65,000 marine inhabitants.

[VIEW VIRTUAL TOUR](#)

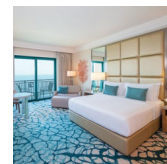
Grand Atlantis Suite - 429sqm

Grand by name and by nature, it commands breath-taking views from five spectacular balconies and private jacuzzi. The lavish living space exudes opulence and includes a dining table for 8 and a separate office. This 2-bedroom suite is great for families or friends looking for extra comfort.

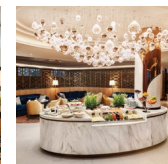
[VIEW VIRTUAL TOUR](#)

Complimentary Stay Benefits

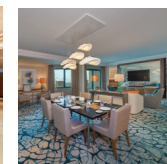
Guest Rooms



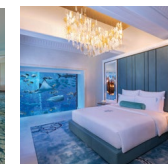
Imperial Club Rooms



Club Suites



Signature Suites



Marine and Waterpark Benefits	Daily access to Aquaventure Waterpark	✓	✓	✓	✓
	Daily access to The Lost Chambers Aquarium	✓	✓	✓	✓
Resort Benefits	Access to private beach across property	✓	✓	✓	✓
	Access to Atlantis Explorers Club	✓	✓	✓	✓
	Daily access to the Imperial Club Lounge inclusive of daily continental breakfast, afternoon tea and evening canapes		✓	✓	✓
	Daily access to the private Imperial Club Beach		✓	✓	✓
	In-suite check-in			✓	✓
	Return transfers to and from Dubai Airports			✓	✓
	Room service breakfast			✓	✓
	Butler Services				✓
Spa and Fitness Benefits	Complimentary access to wet facilities at AWAKEN Spa			✓	✓
	Complimentary access to AWAKEN Fitness Centre	✓	✓	✓	✓
Dining and Entertainment Benefits	Exclusive in-room dining experiences from signature restaurants				✓
	AED 50 gaming credit at Wavehouse for children		✓	✓	✓

ATLANTIS AQUAVENTURE





Aquaventure Waterpark

All stays at Atlantis, The Palm include complimentary access to Atlantis Aquaventure, one of the largest waterparks in the world and the place to enjoy a total of 105 slides, attractions and experiences.

At 48-metres tall, Trident Tower (the newest and biggest) boasts 12 record-breaking slides. Tackle the world's tallest waterslide of its kind on Odyssey of Terror, ride Shockwave, the longest family rafting water coaster in the world, or brave the tallest vertical drop body slide in the Middle East on Blackout.

For a gravity-defying feat, head to Immortal Falls and encounter the region's first cliff jumping experience or ride the Raging Rapids and travel through a number of roaring water elements and different zones of wave intensity.

Every time thrill seekers visit Atlantis Aquaventure there will be something new and exciting to experience.



@AquaventureDubai

Operating Hours: Daily from 10:00am to sunset (Closing hours subject to change depending on the time of year).



The Lost Chambers Aquarium

The legend of Atlantis truly comes alive amidst the intriguing passageways and tunnels of The Lost Chambers Aquarium. With over 20 marine exhibits to explore, containing over 65,000 marine animals including piranhas, giant arapaimas, jellyfish and more, Atlantis is home to one of the largest marine habitats in the Middle East. Guests can enjoy guided tours, interactive shows and marine nursery. The Ambassador Lagoon provides a window into the ruins of the ancient city of Atlantis, mesmerizing guests as a stunning display of fish, stingrays and agile sharks gracefully glide through the relics of this long-lost civilization.

Through The Lost Chambers Aquarium, the fascinating myth becomes a spectacular reality where guests can experience a true sense of wonder at a remarkable underwater world.

Activities

- Dive Discovery
- Shark Safari
- Ultimate Snorkel
- Dive Explorer
- Aquatrek Xtreme
- Predator Dive

Operating Hours: Daily from 10:00am to 10:00pm (Closing hours subject to change depending on the time of year)





Dolphin Bay

Since the opening of Dolphin Bay at Atlantis, The Palm, resort guests and day visitors alike have been delighted to interact with the family of IndoPacific Bottlenose dolphins that call Atlantis home. As the largest coastal dolphin habitat in the world, Dolphin Bay is a 4.5-hectare environment with large crystal-clear lagoons complete with sandy beaches and a tropical setting, offering the perfect location for this once-in-a-lifetime experience. The unique interactions range from a quick encounter in shallow water to swimming or snorkelling alongside dolphins and behind the scenes tours. Each dolphin encounter begins with an informative introduction to dolphin training, physiology, and the importance of marine life conservation. Our aim is to build a life-long appreciation for marine life and encourage our guests to act on behalf of nature.

Activities

- Dolphin Dip & Play
- Dolphin Dive & Discover
- Dolphin Swim & Explore
- Dolphin Meet & Greet

Operating Hours: Daily from 10:00am to sunset (Closing hours subject to change depending on the time of year)





Sea Lion Point

Imagine swimming with sea lions in a safe and indoor environment, a dream that can become a reality. With a range of interactive experiences, you can get up close with these amazing marine mammals and show you how we take care of them while helping you to develop a greater appreciation and respect for marine life. This interaction takes place in shallow water and non-swimmers are welcome to participate.

Activities

- Sea Lion Dip & Play
- Sea Lion Meet & Greet

Operating Hours: Daily from 10:00am to sunset (Closing hours subject to change depending on the time of year)

Conference Centre





Indoor Events

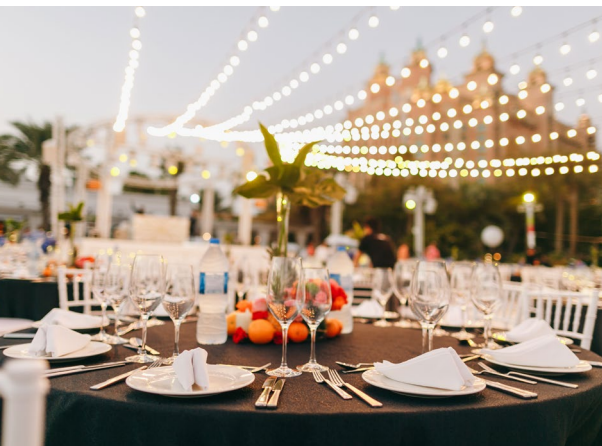
- The Conference Centre consists of 13 meeting rooms, three ballrooms and a boardroom providing flexible solutions to any event
- The largest function room, the Atlantis Ballroom, can accommodate up to 2,000 guests or can be subdivided specifically to your needs. With its own private entrance, it gives guests easy access and convenience to enter and leave the property
- The Spice Ballroom and the Silk Ballroom are two smaller function rooms that can equally be subdivided to provide you with just the right amount of space for your function. Equipped with the latest technical equipment and a private bathroom, the Andes Boardroom is an ideal setting for corporate meetings





Outdoor Events

- Under the dreamy Dubai sky, with a view of Palm Island and the spectacular skyline, Atlantis, The Palm offers outdoor venues that wow
- The Royal Terrace, with a private entrance in the West Tower, is an exclusive spot for a pre-function gathering, an afternoon break or a stand-up reception
- Choose from a beach or a pool side for fun festivities under the stars. For the young at heart, Atlantis, Aquaventure's Tower of Neptune is an edgy backdrop for an out-the-box event
- Whether your event is dressed up or dressed down with toes in the sand, our captivating outdoor venues are havens of hospitality



Overview of Conference Facilities

13 MEETING ROOMS

- Total meeting area – 5544sqm (60,278 sq ft)
- Ballrooms are divisible in up to 5 separate rooms
- Ceiling area spans 2,100 sqm
- 3-phase power
- Adjustable mood lighting
- High-speed Internet access

ATLANTIS BALLROOM

- 8m high ceilings
- Themed décor
- No pillars obstructing view
- Accommodates gala dinner for up to 1,500 guests
- Direct access to Royal Terrace
- LCD screens outside each door
- Full in-house rigging services
- Plentiful hanging points
- Can be divided into 5 sections

SPICE BALLROOM

- Bright and airy
- Pre-function area
- Andes Boardroom adjacent
- Private terrace
- LCD screens outside each door
- Can be divided into 3 sections

SILK BALLROOM

- Conveniently located between 2 ballrooms
- Can be used with Spice & Atlantis Ballroom for breakout rooms
- LCD screens outside each door
- Can be divided into 3 sections

ASATEER

- Seats 1,500 for dinner and 2,500 cocktail style
- 11 metre high ceiling
- Spacious lobby lounge
- Ample car parking via a private entrance

ANDES BOARDROOM

- Natural daylight
- Private bathroom
- Ideal for important meetings
- Adjacent to Spice Ballroom - ideal breakout room
- Direct access to Royal Terrace
- LCD screens outside each door

ROYAL TERRACE

- Spectacular view of Dubai's Skyline
- Views of Dubai Marina

ROYAL BEACH

- Large expanse of beachfront for tailor-made events
- Views of Dubai's Skyline

THE LOST CHAMBERS AQUARIUM

- Unique cocktail receptions / product launches

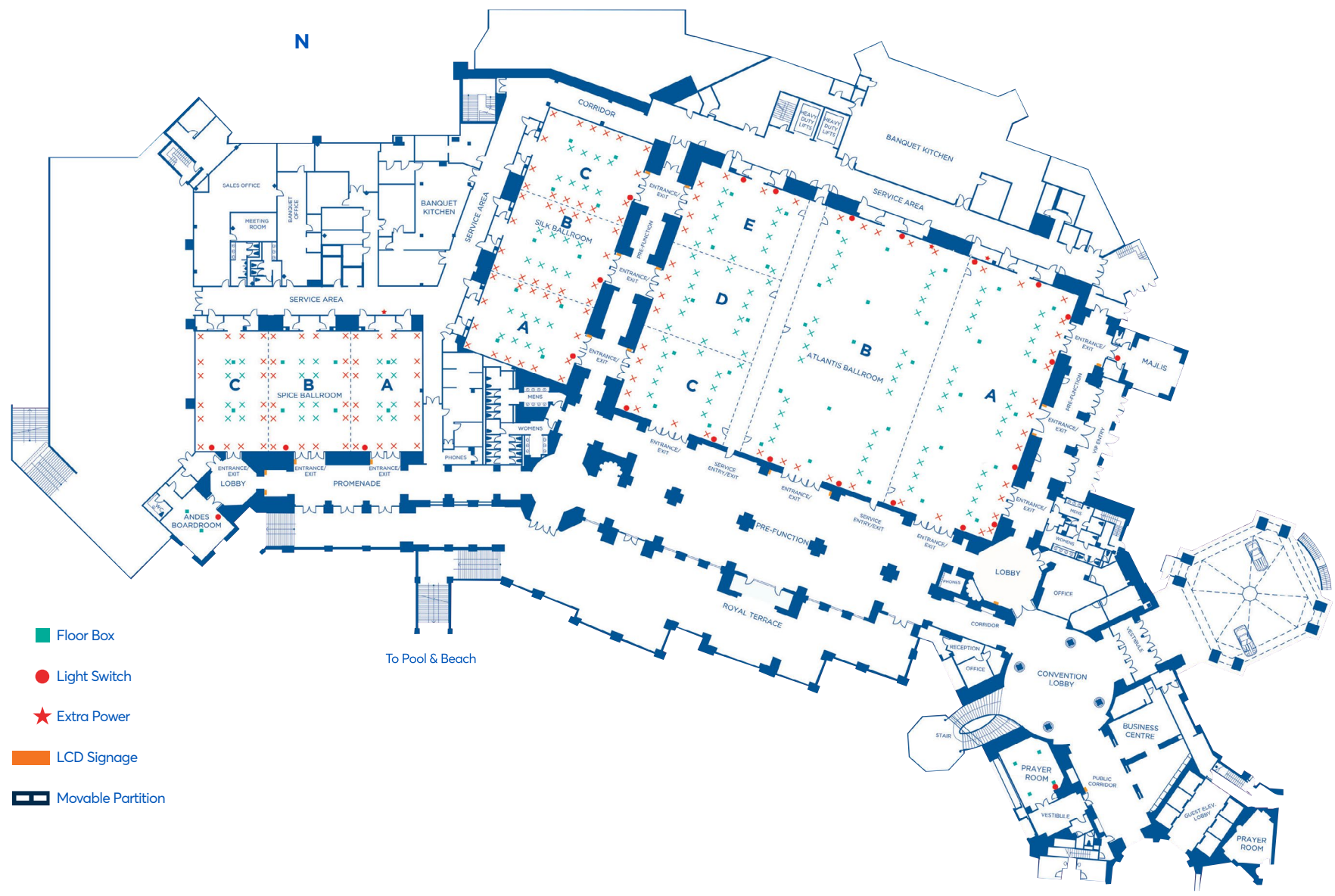
AQUAVENTURE WATERPARK

- Ideal for a team building or gala dinner

OTHER VENUES

- 20 restaurants for private events

Conference Centre



	Dimensions				Capacities							
	Area	Height	Length	Width	Reception	Set Dining	Buffet	Cabaret	Theatre	Classroom	Boardroom	U Shape
A Atlantis Ballroom	2100m ²	8.75m	36.9m	56.9m	2500	1500	1200	1050	2050	1050	360	400
Divisible by 3												
A	601m ²	8.75m	36.9m	16.3m	675	390	305	273	450	300	100	120
B	797m ²	8.75m	36.9m	21.6m	975	540	440	378	600	450	160	180
CDE	601m ²	8.75m	36.9m	16.3m	675	390	305	273	450	300	100	120
CDE divisible by 3												
C	200m ²	8.75m	12.3m	16.3m	240	130	100	91	150	80	30	40
D	200m ²	8.75m	12.3m	16.3m	240	130	100	91	150	80	30	40
E	200m ²	8.75m	12.3m	16.3m	240	130	100	91	150	80	30	40
B Silk Ballroom	540m ²	3.7m	15m	36m	600	250	210	175	300	195	75	90
Divisible by 3												
A	177m ²	3.7m	15m	11.8m	200	70	70	56	100	65	25	30
B	177m ²	3.7m	15m	11.8m	200	70	70	56	100	65	25	30
C	177m ²	3.7m	15m	11.8m	200	70	70	56	100	65	25	30
C Spice Ballroom	538m ²	3.7m	16.8m	32m	600	250	210	175	300	195	75	90
Divisible by 3												
A	176m ²	3.7m	16.8m	10.5m	200	80	70	56	100	65	25	30
B	176m ²	3.7m	16.8m	10.5m	200	80	70	56	100	65	25	30
C	176m ²	3.7m	16.8m	10.5m	200	80	70	56	100	65	25	30
D Prayer Room	56m ²	3.6m	8m	7m	-	-	-	-	-	-	-	-
E Andes Ballroom	52m ²	4.4m	6.5m	8m	-	12	10	-	-	-	12	-
F Majlis	36m ²	5m	6m	6m	30	10	10	7	10	-	-	-
G Pre-function	1000m ² ^	8.75m	-	-	700	-	-	-	-	-	-	-
H Royal Terrace	630m ² °	-	-	-	250	200	150	-	-	-	-	-
I Asateer	2400m ² §	3m*	60m	40m	2100	1200	1000	-	-	-	-	-

^ usable space, including corridors, ° depends on section, supplied upon request. § comprises Internet booth 30m², reception area 45m². * Minimum ceiling height – 9.2 max
NB: The capacities are based on empty rooms. Dimensions listed are strictly for guide purposes only.

A woman with dark hair in a bun lies on a white surface, eyes closed. Above her head, a person's hands hold a wooden bowl and a pestle. The background is softly blurred, showing warm lights and floral arrangements.

AWAKEN

ATLANTIS, THE PALM



AWAKEN Spa & Fitness Centre

AWAKEN is a truly different holistic spa and well-being experience designed to cleanse your body, clear your mind, lift your emotions and stir your spirit. Achieve inner harmony in the most luxurious setting imaginable and reveal the most powerful version of yourself.

Whether it's physical fitness, mental wellness or emotional happiness, guests' experience at AWAKEN will unlock a part of them that is waiting to be found. With separate his & hers areas and sessions, every guest can find an ideal and personalised treatment or therapy. Walk on the earth-hued natural stone steps along steaming water pathways to one of the 27 treatment rooms or find romance in one of our couples' suites.

Consult with the spa team for assistance in personalising your treatment or simply enjoy a workout in the state-of-the-art fitness centre overlooking the pool and outdoors.

Operating Hours:

Spa: Daily from 9:00am - 9:00pm

Fitness Centre: Daily from 6:00am - 9:00pm





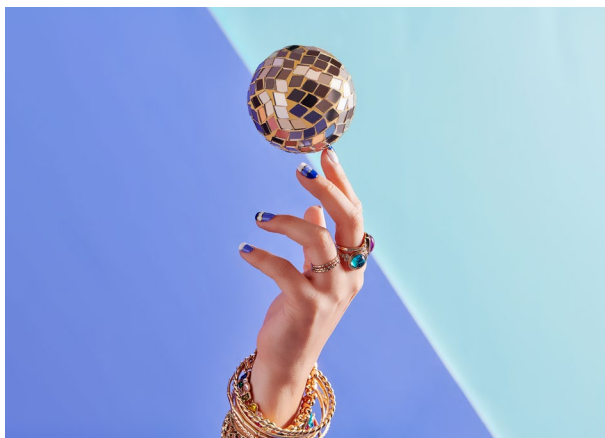
Nailology

Nailology is the sassiest nail bar in town, offering nail treatment services that go beyond basics. Discover creative, innovative services with drinks and bites to pass away the time. Dial your nails up a notch with the latest fashion statements in nail art, cosmetics and jewellery – we do it all.

Did you know Nailology is the only nail bar in Dubai where guests can enjoy mocktails and cocktails while being pampered?

Operating Hours:

Nailology: Daily from 9:00am - 9:00pm





ALKEMY Salon

Guests can achieve the perfect makeover at the hands of our expert stylists. Whether they are looking to repair, trim or revitalize their hair, our specialists will make sure that they look and feel their best.

Operating Hours:

Open daily from 10:00am to 8:00pm



ALKEMY Man

Our expertly trained barbers have created a high-quality service where all guests will enjoy a range of specially crafted grooming experiences that will guarantee they look and feel their finest.

Operating Hours:

Open daily from 10:00am to 8:00pm

Restaurants, Bars & Lounges

With 32 world-class restaurants, bars and lounges to choose from, Atlantis, The Palm is Dubai's supreme culinary destination.



Celebrity Chef Restaurants



Bread Street Kitchen – British – Bar - Indoor & Outdoor – Children’s Play Area – Ice-cream Parlour

Mirroring the lively warehouse style of Gordon Ramsay’s Bread Street Kitchen in London, a selection of British favourites can be enjoyed indoors or outdoors in the beautiful garden. Try Gordon’s famous Beef Wellington served with truffle mash and spiced carrots or opt for a British classic like fish and chips with mushy peas. Visit the chic bar for an innovative cocktail menu featuring a selection of ‘Build your Own’ gin and tonics. Satisfy your sweet tooth at the Bread Street Kitchen ice cream counter with a large selection of treats and toppings that make for a very instagrammable photo.



Bread Street Kitchen Dubai



@breadstreetkitchendubai



Street Pizza – British – Indoor – Bottomless Pizza – Ice-cream Parlour

Street Pizza Dubai is the first to open outside the UK. Gordon Ramsay’s restaurant offers bottomless pizza and free-flowing drinks in a relaxed and casual setting complete with graffiti and street art. Choose from five unique pizza combinations or the daily specials using the freshest ingredients, seasonal toppings and expert pizzaiola craftsmanship to create a Neapolitan style sourdough pizza. Signatures include Margherita, pepperoni, charred aubergine, and corn and chorizo.

Celebrity Chef Restaurants



Nobu – Japanese - Indoor & Outdoor Japanese Garden – Bar & Lounge – Sushi Lounge – Private Dining

World renowned Chef Nobu Matsuhisa continues to redefine Japanese cuisine in a contemporary space combining traditional and modern Japanese elements. At Atlantis, Nobu infuses his cutting-edge style with South American influences to create a distinctly urban experience. Incorporating Nobu's signature dishes as well as new surprises, the menu is complemented by a sushi bar and sake lounge.



Nobu Dubai



@nobudubai

Signature Restaurants



Ossiano Underwater Restaurant & Bar – Fine Dining – Set Menus – Indoor

Ossiano underwater restaurant and bar is widely considered to be one of the most unique settings in the world. Be mesmerised with tranquil views of The Ambassador Lagoon from the comfort of your ambient lit table.



Ossiano Dubai



@ossianodubai

Hakkasan – Bar – Indoor

Hakkasan at Atlantis, The Palm incorporates a restaurant and bar, segregated by intricate carved wooden screens and latticing that echo the rich and glamorous interiors of the London flagship restaurant. Calmness, tranquillity and humility are translated into an elegant atmosphere true to Hakkasan's Chinese roots. Experience an entirely unique and enticing dining experience with a menu that has been awarded multiple Michelin stars at locations throughout the world. The menu is a modern interpretation of authentic Cantonese cuisine, using the finest ingredients and expert techniques to create timeless yet innovative signature dishes.



Hakkasan Dubai



@hakkasandubai



Signature Restaurants



Seafire Steakhouse & Bar –Indoor

A modern New York style steakhouse boasting exceptional butchery from Australia, an open theatrical kitchen and huge walk in wine cellar with more than 3,500 bottles. Enjoy dishes such as our Savoury Short Rib Donuts, Rangers Valley Cross Bred Wagyu and Smores Oreo Chocolate Lava Cake.



Seafire Steakhouse & Bar



@seafiresteakhouse

WHITE Beach Restaurant – Mediterranean- Indoors and Outdoors

Enjoy a sophisticated lunch or dinner at Atlantis, The Palm's newest hot spot. Offering, Mediterranean dishes, ornate desserts made to satisfy anyone's sweet tooth and reinvented cocktails, WHITE Beach and restaurant is the place to unwind.



White Beach Club



@whitebeach



Casual Restaurants



Wavehouse – Indoor & Outdoor – Bar – Bowling – Arcade – Soft Play

Wavehouse is the perfect blend of entertainment and dining for all generations under one massive industrial-meets-rustic beachside-themed spot. Enjoy the weather on the gorgeous garden style roof top terrace, ride the waves on the Surf's Up wave rider or visit the coolest technologically advanced bowling alley you have ever seen. LEVELS is a revolutionary creation of entertainment and adventure, blending a traditional children's soft-play area and an extensive arcade with the world's largest Pac Man and Space Invader games.



Wavehouse Dubai



@wavehousedubai

Kaleidoscope – Buffet – Indoor & Outdoor

Kaleidoscope appeals to a wide range of international tastes by celebrating the palate. Sample dishes from many regions around the world with an open buffet of starters, mains, desserts and live cooking stations.

Saffron – Buffet – Indoor & Outdoor

Enjoy an array of dishes at Saffron with a focus on South-East Asian cuisine prepared at 20 theatrical cooking stations. A buffet like no other, with over 220 dishes from starters to desserts.





The Shore – Mexican - Outdoors

Serving delicious Tex-Mex cuisine and located right next to the Royal Beach and Royal Pool, The Shore is the perfect place to spend a lazy day.

The Edge – Mediterranean – Outdoors

The Edge is a family friendly restaurant offering mouth-watering Mediterranean cuisine with an Italian twist including healthy salads, soups, Arabic mix grills, delicious pizzas and pastas as well as a variety of seafood specials and desserts.

Asia Republic – East Asian – Indoors

Drawing inspiration from the rich culinary history of the Far East, Asia Republic is filled with a host of bold colours and aromas. Pad Thai is a classic Thai noodle dish bursting with the salty, sweet and tangy notes of tamarind, shrimp, eggs and bean sprouts. Its complex and pleasing flavours make it one of our top dishes.

Shawafel – Lebanese – Indoors

Try the best Shawarma and Falafel in Dubai. Fast and flavoursome Arabic street food with all the fun and originality of a street to side eatery.





Sharkbites – Atlantis Aquaventure Waterpark – Indoor & Outdoor

Choose a variety of yummy foods such as burgers, hot dogs, salads, pizza, sandwiches and fried chicken accompanied by a fresh smoothie or FLOR Italian gelato.

Barracudas – Atlantis Aquaventure Waterpark – Indoor & Outdoor

Satisfy your cravings with a selection of different hearty foods from around the world like juicy burgers at The Burger Joint, Arabic shawarma at Shawafel, tandoori at The Dosa Factory, pizza at Peetza, fried chicken at Rooster 66 or chow down on noodles at Asia Republic. Finish with a sweet ending with candy from the Haribo shop or cool down with Flor Italian gelato. A selection of smaller restaurants and kiosks are available throughout Aquaventure Waterpark.

Beach Buns – Burgers and Signature Shakes – Indoors and Outdoors

Signature burgers and freak shakes that are famous for their Instagram worthy looks. Turn lunch time into a photoshoot with these tasty larger than life burgers and sweet shakes.

Snappers – Located at the new Trident Tower in Aquaventure Waterpark –Outdoor

Snappers offers a variety of food such as burgers, chickens & waffle burgers , hotdogs, salads, beverages, and fresh juices



Café and Lounges

Plato's – Patisserie – Bar – Lounge – Indoor – Afternoon Tea

Dynamic tea lounge by day, sophisticated bar lounge by night. From signature breakfasts, afternoon tea and pastries to a night full of signature Gin and Tonic Cocktails, dive into Plato's drinking philosophy, expand the mind and come out enlightened.

X Bar and Terrace – Lounge – Indoor & Outdoor – Shisha

Set against the backdrop of contemporary design, and overlooking The Palm, X Bar and Terrace is the perfect spot to enjoy one of our signature cocktails while you nibble from our small dish menu. At night take in the views and unwind on the terrace with an extensive menu of shisha flavours.

Brand Guidelines

Do's and Don'ts

Do's

- Do** - Use the brand names in full:
Atlantis The Palm, Dubai | Atlantis, The Palm |
The Lost Chambers Aquarium | Atlantis Aquaventure
Aquaventure Waterpark | AWAKEN Spa & Fitness |
Atlantis Explorers Club | The Avenues
- Do** - Use the building image as the key Hero image for your brochures and collateral
- Do** - On listings or collateral featuring multiple images, always have a waterpark image and an aquarium image as your second and third image choice (respectively).

Don'ts

- Don't** - Abbreviate the brand names:
Aquaventure | Lost Chambers | Kids Club | Atlantis
- Don't** - Use the word 'Jumeriah' in any copy involving Atlantis, The Palm. To describe 'Palm Jumeirah', you may use The Palm or Palm Island.
- Don't** - Include savings messages above 40%. For any savings above 40%, kindly use phrases such as Exclusive Rates, or Special Offer.
- Don't** - Amend the treatment of any of our imagery.
- Don't** - Include any mention of competitors within copy related to Atlantis, The Palm:
Dubai Parks & Resorts | Madinat Jumeirah | Jumeirah Beach Hotel | Wild Wadi Waterpark | YAS Island

A World Away From Your Everyday