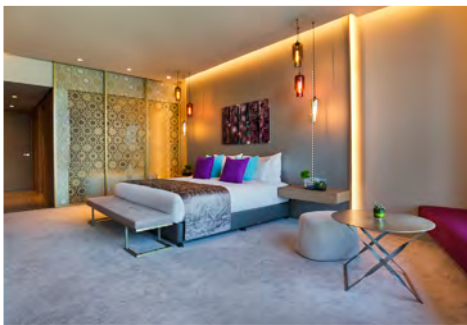


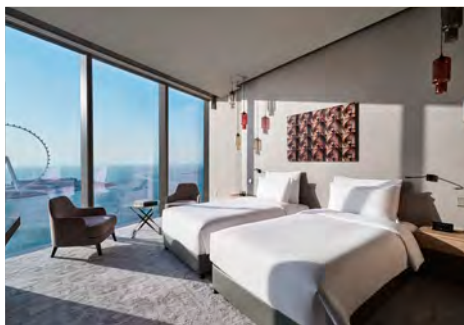


At Rixos Premium Dubai, every stay is now even more rewarding.

Nestled along the shimmering coastline of Jumeirah Beach Residence, this urban beachfront resort introduces an expanded range of benefits, amenities, and services, ensuring your clients enjoy an elevated experience no matter what room category you offer.



DELUXE ROOM



PREMIUM ROOM



PANORAMA ROOM

- Complimentary breakfast on arrival
- Complimentary access to the World's Largest Waterpark (minimum stay 3 nights)
 - Tea & coffee amenities, 2 espresso capsules daily
 - Turndown service
 - Premium bathroom amenities

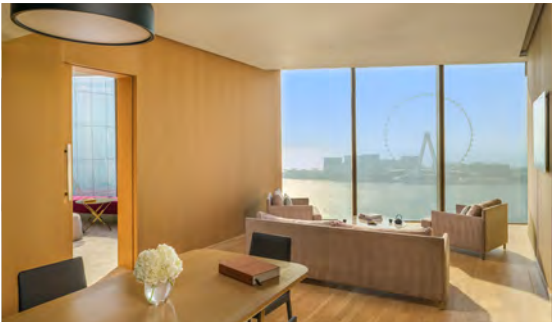
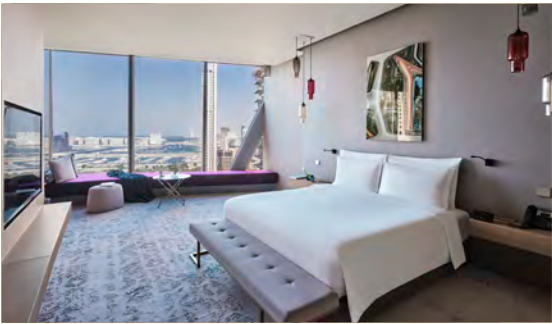


JUNIOR SUITE

- Complimentary breakfast on arrival
- Complimentary access to the World's Largest Waterpark (minimum stay 3 nights)
- Early check-in & late check-out (subject to availability)
- Tea & coffee amenities, 2 espresso capsules daily
- Complimentary tea time at Godiva Lounge (minimum stay 6 nights) – once per stay
- Turndown service
- Premium bathroom amenities

ONE BEDROOM DELUXE SUITE

- Complimentary airport transfer (from/to DXB - (minimum stay 6 nights)
- Complimentary breakfast on arrival
- Complimentary access to the World's Largest Waterpark (minimum stay 3 nights)
- Early check-in & late check-out (subject to availability)
- VIP check-in & check-out
- Complimentary breakfast in-room dining (until 12 pm - minimum stay 6 nights) - once per stay
- Tea & coffee amenities, 2 espresso capsules daily
- Complimentary tea time at Godiva Lounge (minimum stay 6 nights) - once per stay
- Turndown service
- Premium bathroom amenities
- Complimentary laundry service (max 5 pieces - minimum stay 6 nights) - once per stay



ONE BEDROOM PREMIUM SUITE

- Complimentary airport transfer (from/to DXB - minimum stay 6 nights)
- Complimentary breakfast on arrival
- Complimentary access to the World's Largest Waterpark (minimum stay 3 nights)
- Early check-in & late check-out (subject to availability)
- VIP check-in & check-out
- Complimentary breakfast in-room dining (until 12 pm - minimum stay 6 nights) - once per stay
- Tea & coffee amenities, 2 espresso capsules daily
- Complimentary tea time at Godiva Lounge (minimum stay 6 nights) - once per stay
- Turndown service
- Premium bathroom amenities
- Complimentary laundry service (max 5 pieces - minimum stay 6 nights) - once per stay

TWO BEDROOM PREMIUM SUITE

- Marhaba service on arrival or departure (minimum stay 6 nights) - up to 4 pax
- Complimentary airport transfer (from/to DXB - minimum stay 6 nights)
- Complimentary breakfast on arrival
- Complimentary access to the World's Largest Waterpark (minimum stay 3 nights)
- Early check-in & late check-out (subject to availability)
- VIP check-in & check-out
- Complimentary breakfast in-room dining (until 12 pm - minimum stay 6 nights) - once per stay
- Tea & coffee amenities, unlimited espresso capsules daily
- Complimentary minibar (soft beverages only, refreshed daily)
- Complimentary tea time at Godiva Cafe (minimum stay 6 nights) - once per stay
- Personal Butler service (minimum stay 6 nights)
- Personal Trainer at Fitness Centre (minimum stay 6 nights) - one session per stay
- Turndown service
- Premium bathroom amenities
- Complimentary laundry service (max 5 pieces - minimum stay 6 nights) - once per stay



Guests staying in our Two Bedroom Premium Suite unlock a thrilling Dubai experience on us. Choose from a curated selection of the city's most iconic attractions, from sky-high views to desert adventures and an unforgettable aquarium experience. For stays of 6 nights or more, only one experience can be selected.



DESERT SAFARI
Up to 4 persons



BURJ KHALIFA AT THE TOP
Up to 4 persons



DUBAI AQUARIUM
Up to 4 persons

For more information, please contact your local travel partner.

MORE THAN | A Destination