



# Queen Elizabeth 2

Managed by ACCOR



## The only floating hotel in Dubai

An iconic ocean liner with a storied past spanning 50 years, Queen Elizabeth 2 is located in Port Rashid offering easy access to Dubai's key attractions. Queen Elizabeth 2 offers 447 rooms and suites designed to suit the needs of business, leisure travellers and families alike. Dining includes international cuisine at Lido restaurant, drinks and snacks at Golden Lion - the oldest pub in Dubai, and afternoon tea at Queen's Grill. Home to a historic ballroom, versatile boardrooms and exquisite outdoor venues, Queen Elizabeth 2 has the perfect venue for every occasion.



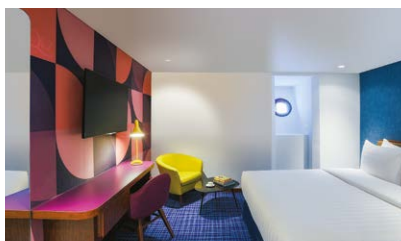
## Accommodation

From sea-cruising enthusiasts, families and couples, to holiday makers, the rich and famous, and even royalty, our choice of rooms and suites reflects the diverse range of passengers we have played host to over the years. Lovingly restored to capture the splendour and sophistication of the ship's glorious sailing days, each room and suite is also fitted with sleek and modern touches to fit in with her new surroundings.



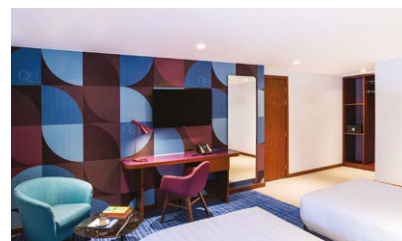
### Classic Room

The classic rooms offer an authentic cruise-ship cabin experience, with original porthole windows providing views of the Arabian Gulf or the iconic Dubai skyline.



### Superior Room

These rooms are ideal for those looking to enjoy an authentic QE2 cabin experience with a little more space. The original porthole windows offer sea or city views.



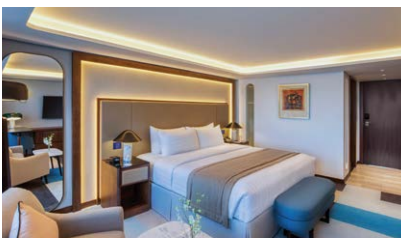
### Deluxe Room

Light and spacious with extra home-from-home comforts and luxurious touches. The sitting area provides a place to relax and three original porthole windows give sea or city views.



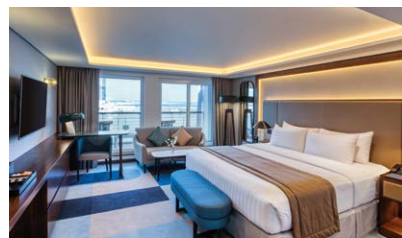
### Officer's Room

Located in the former first-class quarters of the QE2, our Officer's Rooms offer affordable luxury, with a functional and relaxed living space, and sea or city views through large windows.



### Captain's Room

Located on the Sun Deck, these newly refurbished rooms feature all the mod-cons that one would expect from the former first-class quarters of the QE2, while maintaining an authentic British heritage feel, with lovingly restored furniture and fittings. The state-of-the-art marble bathrooms boast walk-in showers and double sinks, as well as natural light and high-quality amenities.



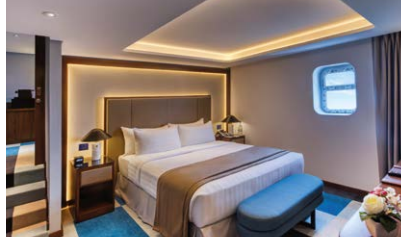
### Captain's Room with Balcony

loor-to-ceiling sliding doors lead out on to a balcony which brings you closer to the water than any other room in the city. Take in a front row spectacle of Dubai's skyline as you relax on the lovingly restored, comfortable wooden deck.



### Junior Suite

With a separate living area and sofa bed, this is an ideal option for families who want to explore everything the ship has to offer and enjoy comfortable sleeping arrangements.



### Officer's Suite

With a separate living area and desk space, plus large bathroom, bedroom and sofa bed, these impressive suites offer the space to unwind, work and sleep, all in a completely unique nautical environment.



### Duplex Suite

At 76m<sup>2</sup>, these are the largest suites onboard the QE2 offering a complete sense of luxury spread over two floors. These extravagant maritime cabins boast large windows to gaze out of, two balconies, a large separate sitting room and, an upstairs bedroom.



### The Royal Suite

Once reserved for members of the Royal Family, step into the next level of luxury with a stay in one of our two exclusive Royal suites: the Queen Elizabeth or the Queen Mary. The Royal Suites boast a spacious and comfortable bedroom, generous living quarters on a magnificent mezzanine level, a conservatory and large private veranda with stunning views.



### GUEST SERVICES

Library • Fully Equipped Gym • Indoor Pool • Heritage Tour • Theatre  
 Unisex Hair & Beauty Salon • 24-Hour Room Service • Complimentary Bicycles  
 Complimentary Shuttle Bus to Key • Travel Desk

ROOM TYPE NAMES	NUMBER OF UNITS	KING	TWIN	SIZE m <sup>2</sup>	OCCUPANCY
CLASSIC ROOM	248	217	31	20	2 adults and 1 child below 12 EB
SUPERIOR ROOM	64	36	28	26	3 adults with EXB or 2 adults and 2 children with EXB
DELUXE ROOM	70	25	11	34	3 adults with EXB or 2 adults and 2 children with EXB
JUNIOR SUITE	2	2		59	3 adults with EXB or 2 adults and 2 children with EXB
FAMILY ROOM - CLASSIC	8	24	10	24	3 adults with EXB or 2 adults and 2 children with EXB
FAMILY ROOM - SUPERIOR	12	24	10	24	3 adults with EXB or 2 adults and 2 children with EXB
CAPTAIN'S ROOM	12	12		39	3 adults with EXB or 2 adults and 2 children with EXB
CAPTAIN'S ROOM - BALCONY	24	24		24	3 adults with EXB or 2 adults and 2 children with EXB
OFFICER'S SUITE	2	2		60	3 adults with EXB or 2 adults and 2 children with EXB
CAPTAIN'S SUITE	1	1		62	3 adults with EXB or 2 adults and 2 children with EXB
DUPLEX SUITE	2	2		76	3 adults with EXB or 2 adults and 2 children with EXB
ROYAL SUITE	2	2		79	3 adults with EXB or 2 adults and 2 children with EXB

EB EXISTING BED EXB EXTRA BED



## Dining

The QE2 offers a range of dining venues with a dazzling array of dishes from around the world.



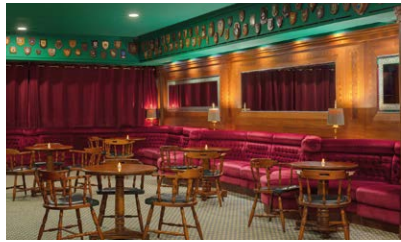
### Lido

Enjoy international dining in the chic and modern atmosphere of Lido restaurant while admiring the views from the large floor to ceiling windows.

Breakfast: 7:00 am – 10:30 am

Lunch: 12:30 pm – 3:00 pm

Dinner: 6:30 pm – 11:00 pm



### The Golden Lion

With plush red seats and deep green décor, The Golden Lion offers a historical English pub experience.

12:00 noon – 12:00 midnight



### In-Room Dining

Experience international dining in the comfort and privacy of your own room. Wake up to a lazy breakfast in bed, enjoy all-day refreshments or indulge in a midnight snack.

24 hours



### Afternoon Tea

Experience our quintessential afternoon tea in royal style at The Queen's Grill, a venue once reserved for the first-class passengers. Indulge in an exquisite assortment of savoury bites, freshly baked scones and a selection of pastries.

Fridays & Saturdays  
3:00 pm – 6:30 pm



### The Pavilion

Unwind under the stars while enjoying flavoursome shisha with friends. Located on the lower aft deck of the QE2, The Pavilion offers picturesque vistas of the Mina Rashid Yacht Club and Dubai's glistening skyline.

Sunday to Thursday: 5:00 pm - 12:00 am  
Friday & Saturday: 5:00 pm - 1:00 am



## Activities

Discover the remarkable history of the QE2, enjoy a spectacular show at the Theatre by QE2, or treat yourself to a range of hair, nails, and skincare services and treatments at TrendSetters Unisex Salon.



### Heritage Tour

Get a glimpse of what life was like onboard the iconic Queen Elizabeth 2 during her sailing days and learn about maritime history.

Daily, 11:00 am and 5:00 pm



### Theatre by QE2

Great entertainment has always been at the very heart of the QE2. Enjoy world-class and bespoke performances in the authentic theatre onboard the iconic hotel.

For more information visit [www.theatrebyqe2.com](http://www.theatrebyqe2.com).



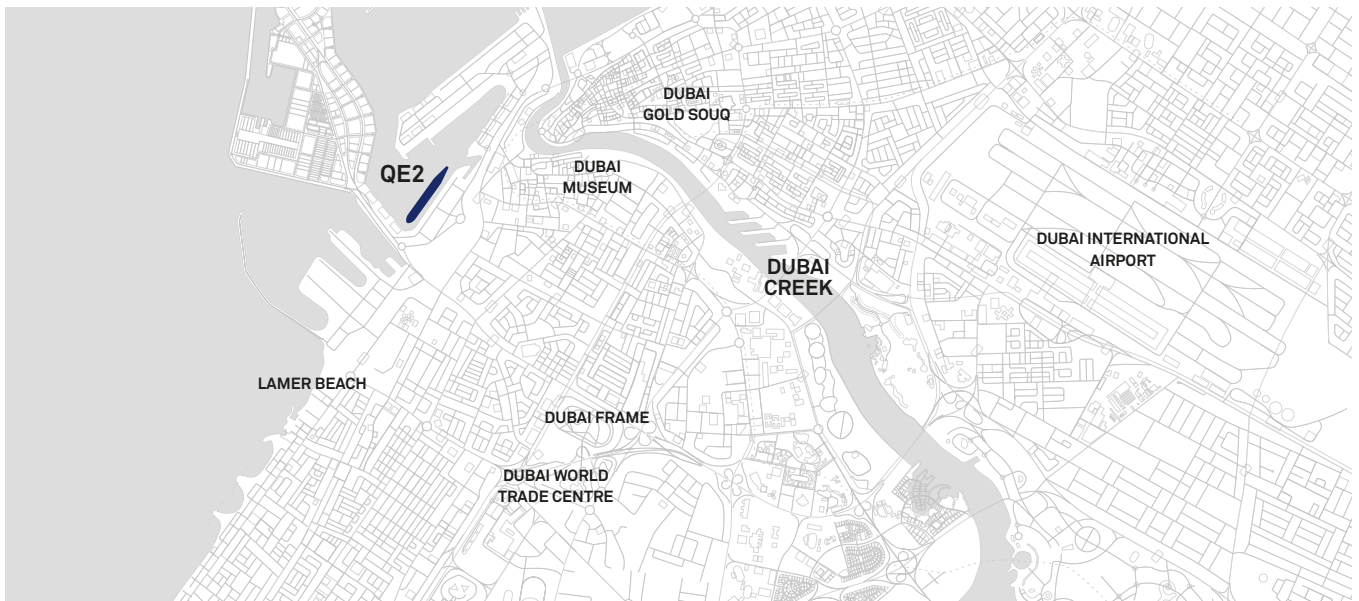
### TrendSetters Unisex Salon

Nourish, hydrate, and enhance your holiday glow with a variety of hair, nails, and skincare services and treatments at TrendSetters Unisex Salon.

Business Hours: 10:00 am - 10:00 pm

## Daily Shuttle Bus Service

Enjoy complimentary rides to some of Dubai's favourite attractions with daily shuttle service. Spend the day at the beach, visit the world's highest observation deck at Level 148 of Burj Khalifa, or enjoy shopping in one of the world's largest malls in the UAE.



For inquiries and reservations, please get in touch with us at  
+971 4 526 8888 or [reservations.qe2@accor.com](mailto:reservations.qe2@accor.com)  
[www.qe2.com](http://www.qe2.com)



Queen Elizabeth 2

Managed by ACCOR

Mina Rashid, P.O. Box 6769, Dubai, UAE