

BAB AL SHAMS

DESERT RESORT • DUBAI



Bab Al Shams, Arabic for ‘Gateway to the Sun’, is a luxury desert resort outside of Dubai, just 45 minutes from the city centre. This one-of-a-kind destination comprises 115 elegant contemporary rooms and suites within distinctive modernist architecture, along with vibrant dining and eclectic entertainment. Guests can celebrate life, relax beside beautiful pools shaded by desert palms, or surrender to mindful relaxation at the spa.

From sunrise to sunset, Bab Al Shams offers wondrous desert adventures, including hot-air balloon rides, Arabian horse riding, camelback trekking, falconry, nature tours to Al Marmoom, and more. For a theatrical open-air dining experience inspired by Middle Eastern culture, enjoy Al Hadheerah’s dinner spectacular with mesmerising live entertainment and regional delicacies.







**STAY IN THE DUBAI
DESERT**

Bab Al Shams Desert Resort offers 115 luxurious rooms and suites designed with modern Arabian flair across 16 two-storey buildings. Each room and suite features either desert or garden views; some include outdoor space with private terraces or balconies.

- Deluxe Garden View Room (37 sqm)
- Deluxe Desert View Room (37 sqm)
- Terrace Garden View Room (47 sqm)
- Terrace Desert View Room (47 sqm)
- Deluxe Family Room (74 sqm)
- Terrace Family Room (94 sqm)
- Junior Suite (50 sqm)
- Deluxe Suite (65 sqm)
- Deluxe Family Suite (102 sqm)
- Desert Pool Villa (Coming Soon)





DELUXE GARDEN VIEW ROOM



TERRACE GARDEN VIEW ROOM



TERRACE DESERT VIEW ROOM



DELUXE ROOMS WITH CONNECTING DOOR (FAMILY ROOM)













DAY INTO NIGHT, A CULINARY JOURNEY

Discover delectable dining experiences that span a variety of international cuisines, with live cooking and show kitchens that set a vibrant scene.

AL HADHEERAH

An Arabian theatre of open-air dining and live entertainment with its roots in diverse Middle Eastern cultures. Savour live-cooked delicacies and captivating performances among the dunes.

ZALA, ALL-DAY DINING

A neighbourhood-style eatery offering dishes inspired by Ottoman, Greek and Mediterranean cuisines. Breakfast, lunch or dinner, Zala embraces the region's rich heritage and hospitality.

ANWĀ, SUNSET LOUNGE

Blending diverse culinary traditions from the Far East and Southeast Asia, this rooftop restaurant offers immersive open-air dining surrounded by sweeping desert panoramas.

NINIVE BAB AL SHAMS

Inspired by 1001 Arabian Nights, Ninive Bab Al Shams presents a mesmerising dining experience that captures the essence of Middle Eastern and North African cuisine.

YA HALA, CIGAR LOUNGE

This hideaway cigar and residents' lounge, with the ambience of an old-world club, offers fine cigars, a collection of rare spirits and non-alcoholic drinks.

LOBBY LOUNGE

The Lobby Lounge is home to a curated selection of light dishes and signature mocktails, offering the ideal social setting for a delightful afternoon tea or a meet-and-greet in style.





Between the Arabian desert and the starlit night sky, discover Al Hadheerah, an Arabian theatre of open-air dining and live entertainment with its roots in ancient, diverse Arabic cultures. Enter a living souk and meander through alleyways of live-cooked authentic Middle Eastern cuisine as dancers, musicians, falconers, and camel riders come out to entertain. To experience Al Hadheerah is to cross a bridge linking the past to the future, as the soul of Arabian heritage comes alive under the desert stars.









zala

Step into a world of culinary delight at Zala, where Turkish and Greek flavours blend in a medley of Mediterranean dishes. Breakfast, lunch or dinner, Zala embraces the warm hospitality of the region, where gathering for meals is a language of love and a means of connection. Whether you're seeking a romantic dinner for two or a lively lunch with friends, Zala is the place to slow down, catch up, and share in the joy of good food.





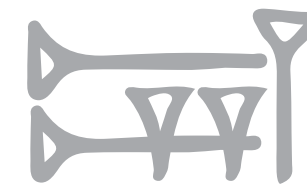
ANWĀ

Step out of the mundane and into a world of mystical delights at Anwā, a rooftop lounge with captivating views of Dubai. Explore artfully crafted cocktails, taste your way through a cosmos of Pan-Asian bites, and prepare for an evening of spirited conversations. Round up your tribe and come experience the magic that makes Anwā a destination beyond compare.







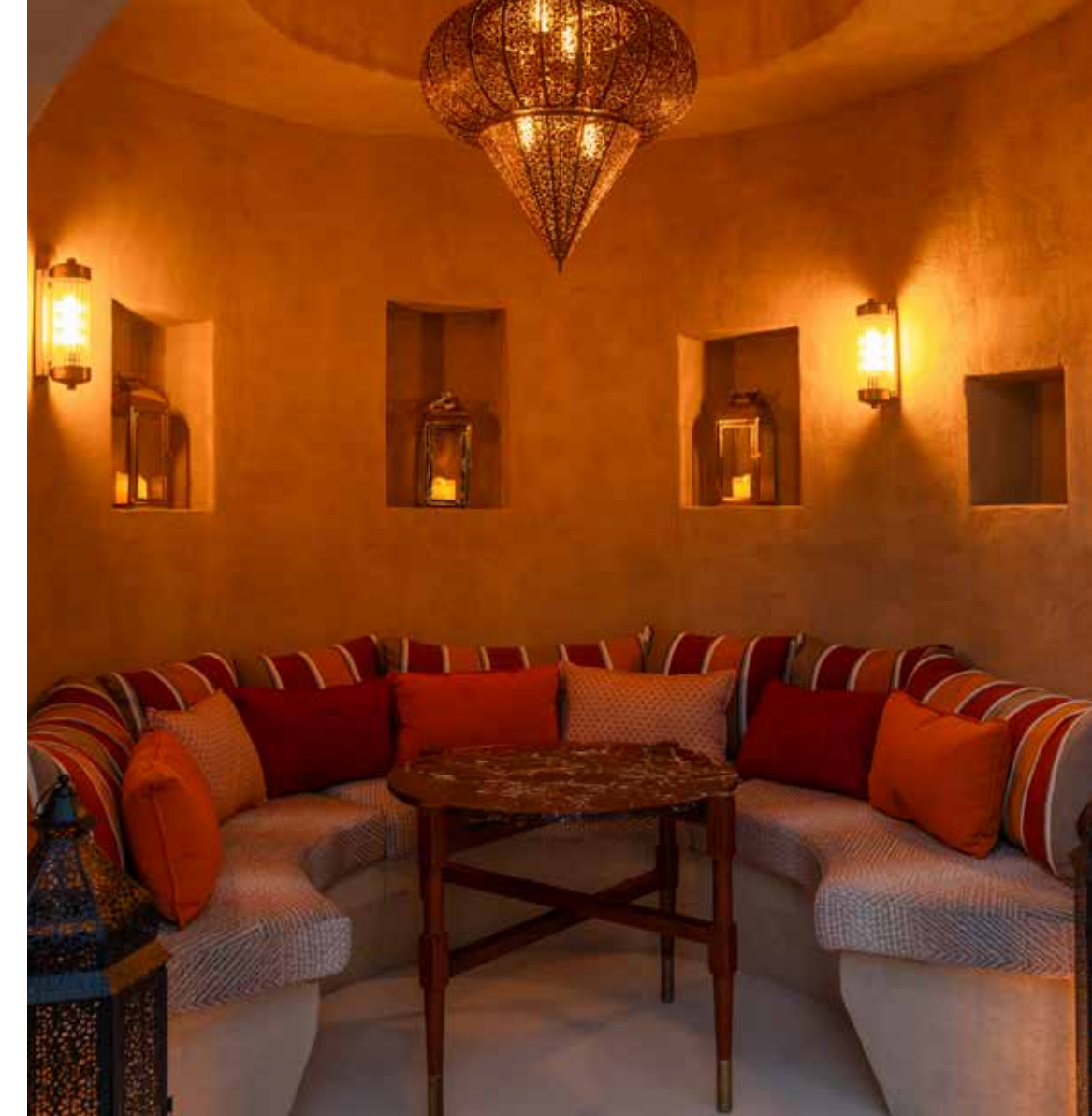


NINIVE

BAB AL SHAMS DESERT RESORT

Inspired by 1001 Arabian Nights, Ninive Bab Al Shams presents a mesmerising dining experience that captures the essence of Middle Eastern and North African cuisine. Uncover an enchanting blend of traditional flavours and contemporary flair at this sophisticated Oriental locale, nestled between Dubai's golden desert dunes.











A SPACE OF RITUAL & REVIVAL

Step into our self-care haven at the Bab Al Shams Spa & Hammam. Choose between rejuvenating treatments, fitness training and guided mindfulness, all set to the backdrop of Bab Al Shams' golden dunes.

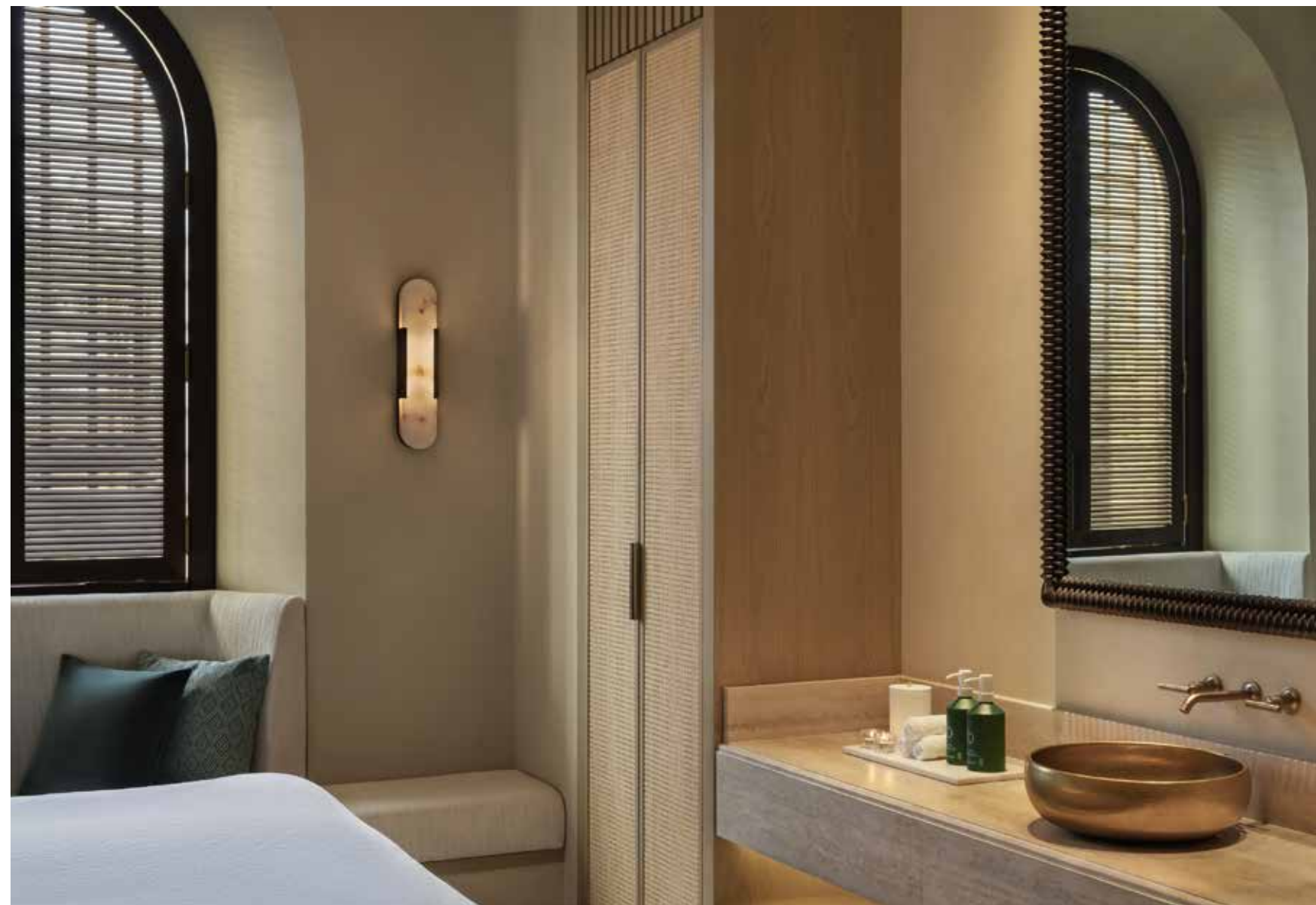
- Four multi-purpose single rooms
- Two VIP couple suites
- Male and female hammam facilities
- Courtyard plunge pool
- Steam rooms
- Sauna room
- Experience showers
- State-of-the-art Fitness Centre
- Collaborations with sustainable skincare brands, such as Bamford, Maison D'asa, and Whind, as well as homegrown brand De L'arta.

















EXPERIENCE A WORLD OF DESERT WONDER

Uncover the mystique of Arabia with vibrant desert experiences from sunrise to sunset, all bookable through the one-stop Experience Centre.

- Pool In the Desert
- Archery
- Falconry
- Desert Drive Tour
- Fat Bike Desert Safari
- Private Hot-Air Balloon
- Arabian Horse Riding
- Camelback Trekking
- Desert Stargazing
- Emirati Storytelling
- Bab Al Shams Kids' Club
- Guided Walk In The Arabian Desert
- The Art of Arabic Coffee Making & Serving











ARABIAN HORSE RIDING



FAT BIKE DESERT SAFARI

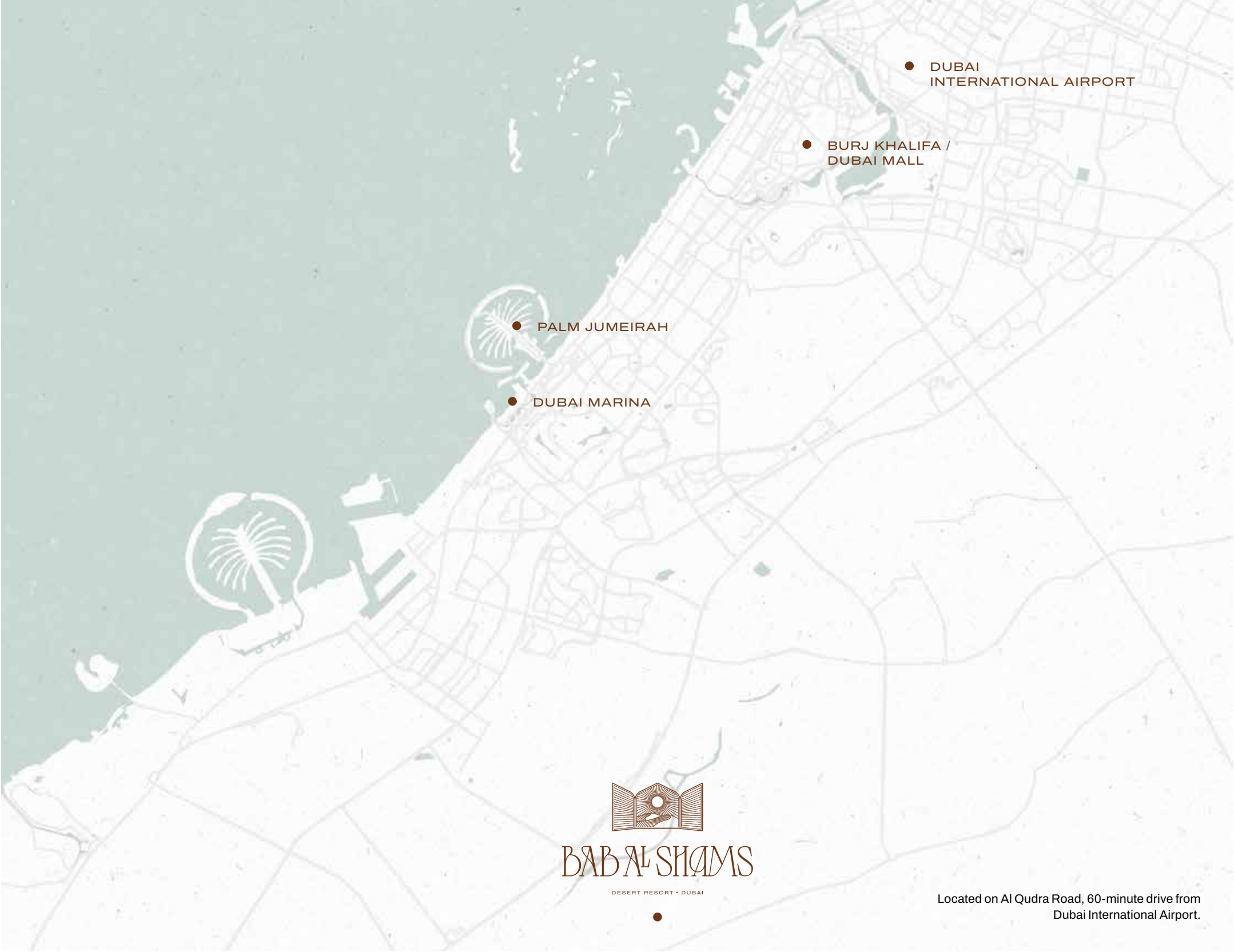






RESORT INFORMATION

ACCOMMODATION (SQM) TOTAL KEYS: 115	FOOD & BEVERAGE EATERTAINMENT	RESORT LEISURE	CELEBRATION & EVENTS
<ul style="list-style-type: none">Deluxe Garden View Room (37 sqm)Deluxe Desert View Room (37 sqm)Terrace Garden View Room (47 sqm)Terrace Desert View Room (47 sqm)Deluxe Family Room (74 sqm)Terrace Family Room (94 sqm)Junior Suite (50 sqm)Deluxe Suite (65 sqm)Deluxe Family Suite (102 sqm)Desert Pool Villa (Coming Soon)	<ul style="list-style-type: none">AL HADHEERAH An Arabian theatre of open-air dining with its roots in diverse regional cultures. Savour live-cooked delicacies and captivating performances in the heart of the desert.ZALA, All-Day Dining A neighbourhood-style eatery offering dishes inspired by Ottoman, Greek and Mediterranean cuisines. Breakfast, lunch or dinner, Zala embraces the region's rich heritage and hospitality.ANWĀ, Sunset Lounge Blending diverse culinary traditions from the Far East and Southeast Asia, this rooftop restaurant offers immersive open-air dining surrounded by sweeping desert panoramas.NINIVE BAB AL SHAMS Inspired by 1001 Arabian Nights, Ninive Bab Al Shams presents a mesmerising dining experience that captures the essence of Middle Eastern and North African cuisine.YA HALA, Cigar Lounge This hideaway cigar and residents' lounge, with the ambience of an old-world club, offers fine cigars, a collection of rare spirits and non-alcoholic drinks.LOBBY LOUNGE The Lobby Lounge is home to a curated selection of light dishes and signature mocktails, offering the ideal social setting for a delightful afternoon tea or a meet-and-greet in style.SWIM-UP BAR	<ul style="list-style-type: none">Bab Al Shams Spa & Hammam, a desert view pool and an adjoining Fitness Centre4 pools: 1 desert infinity pool, 1 kids' pool, 1 swim-up bar pool, 1 plunge poolZala Lawn area for leisure and events1 outdoor chess area2 outdoor sunken seating areas1 archery area1 volleyball courtKids' outdoor playgroundSunset Point - events area in the desertBab Al Shams Arena - an outdoor mega amphitheatre - up to 20,000 visitors, 6,000 pax seating, 10 kitchens, VIP majlis areas for up to 1,000 guests, staging area (200m x 100m)Experience CentreOngoing special events and holiday celebrationsNearby Al Qudra cycling track and Al Marmoom Desert Conservation Reserve	<ul style="list-style-type: none">Falcon meeting rooms: 3 meeting rooms - 2 boardrooms (10 pax capacity each), 1 meeting room (15-40 pax capacity), courtyard (20 pax capacity)Bab Al Shams Arena (20,000 pax capacity)Bedouin Area (700 - 1,000 pax capacity)Sunset Point (300 pax capacity), lower deck (100 pax capacity)Anwā: Sunrise Terrace (68 pax capacity), Sunset Terrace (220 pax capacity), Rooftop Terrace (76 pax capacity), indoor (33 pax capacity)Zala: indoor (100 pax capacity), terrace (120 pax capacity), Zala Lawn (600 pax capacity)Ya Hala (26 pax capacity)Ninive Bab Al Shams(100 pax capacity)Al Hadheerah: restaurant (450 pax capacity)Lobby Lounge: indoor (33 pax capacity), courtyard (38 pax capacity)



Located on Al Qudra Road, 60-minute drive from Dubai International Airport.



