

HOTEL CLOVER  
PATONG PHUKET



[WWW.PATONGPHUKET.HOTELCLOVER.COM](http://WWW.PATONGPHUKET.HOTELCLOVER.COM)





## OVERVIEW

Hotel Clover Patong Phuket, a 4-star hotel features contemporary design combined with warm Thai hospitality and the highest standard of service and quality, staying true to its philosophy of “Simplicity in Luxury”. Located in the heart of Phuket, Hotel Clover Patong Phuket is a minute walk to the popular Patong beach, a five (5) minutes’ walk to Jungceylon and Central, the largest shopping malls on the island and Bangla Road, a fun party district. Phuket Old Town is a short twenty (20) minutes’ drive from the hotel. It takes approximately 45 minutes’ by car/taxi from Phuket International/Domestic Airport to the hotel.



# EXPLORE OUR COSY HOTEL ROOMS



## **SUPERIOR BALCONY ROOM**

26 SQM, 121 Units Available  
Fitted with a Twin or King Bed along  
with a Balcony.  
Connecting Rooms Available  
Sleeps Max 2 Pax



## **PREMIER BALCONY ROOM**

26 SQM, 24 Units Available  
Fitted With a Twin or King Bed Along  
Includive Ladies Kits and Special Amenity  
Connecting Rooms Available  
Sleeps Max 2 Pax



## **DELUXE STUDIO ROOM**

28 Sqm, 34 Units Available  
Fitted with a Twin or King Bed Along  
with Extra Bed as per Request,  
Daily Washing service, Welcome a Minibar,  
Sleeps Max 3 Pax

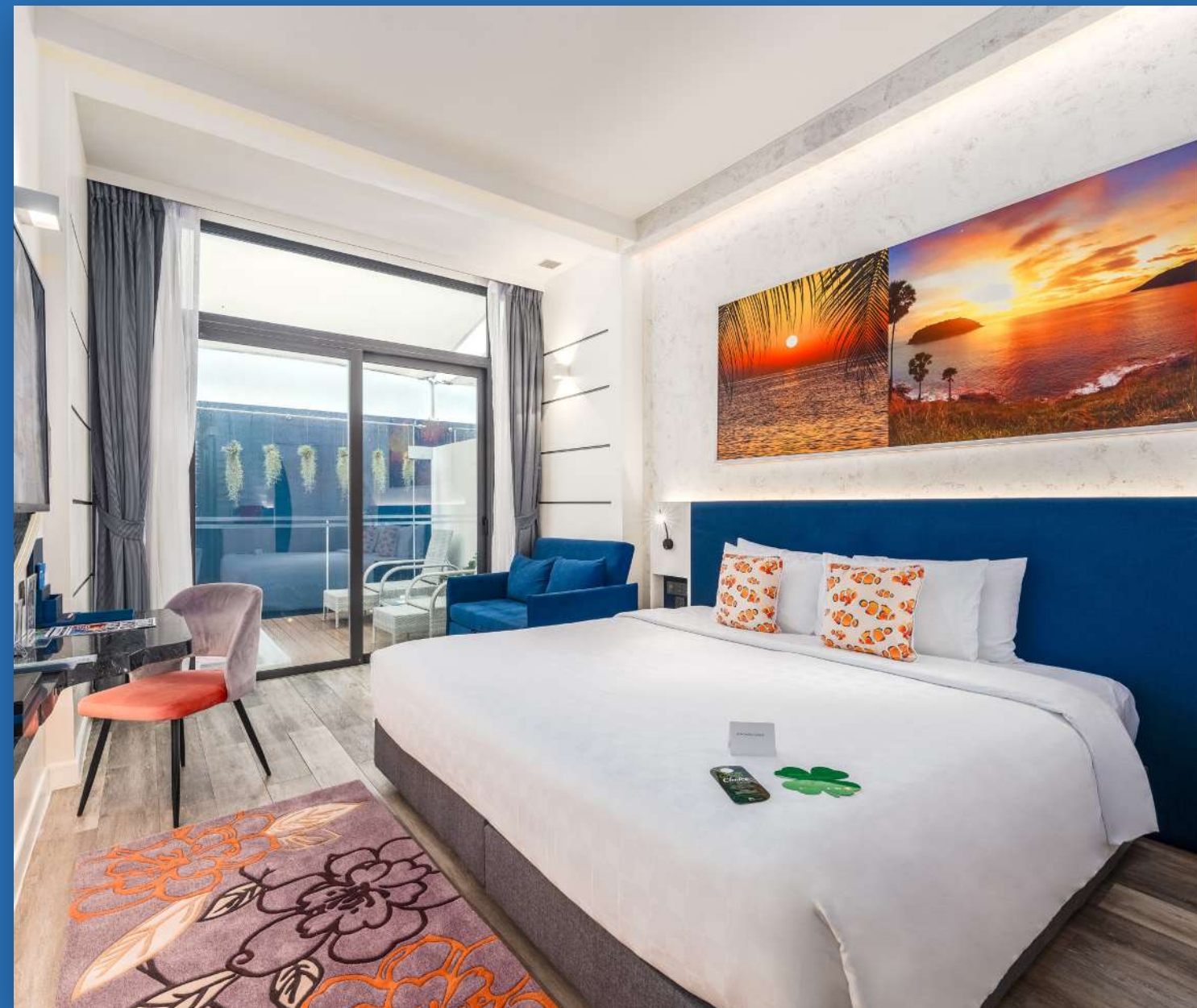


# EXPLORE OUR COSY HOTEL ROOMS



## DELUXE FAMILY

26 SQM, 19 Units Available  
Fitted with a Twin or King Bed  
along with a Daybed  
Connecting Rooms Available  
Sleeps Max 2 + 1 on Daybed



## DELUXE JACUZZI

35 SQM, 14 Units Available  
Fitted with a Twin or King Bed along  
with an Outdoor Deck with Private Jacuzzi  
Rooms Available  
Sleeps Max 2 Pax



## DELUXE JACUZZI SUITE

52 SQM, 1 Units Available  
King Bed with Jacuzzi  
Sleeps Max 3 on Daybed



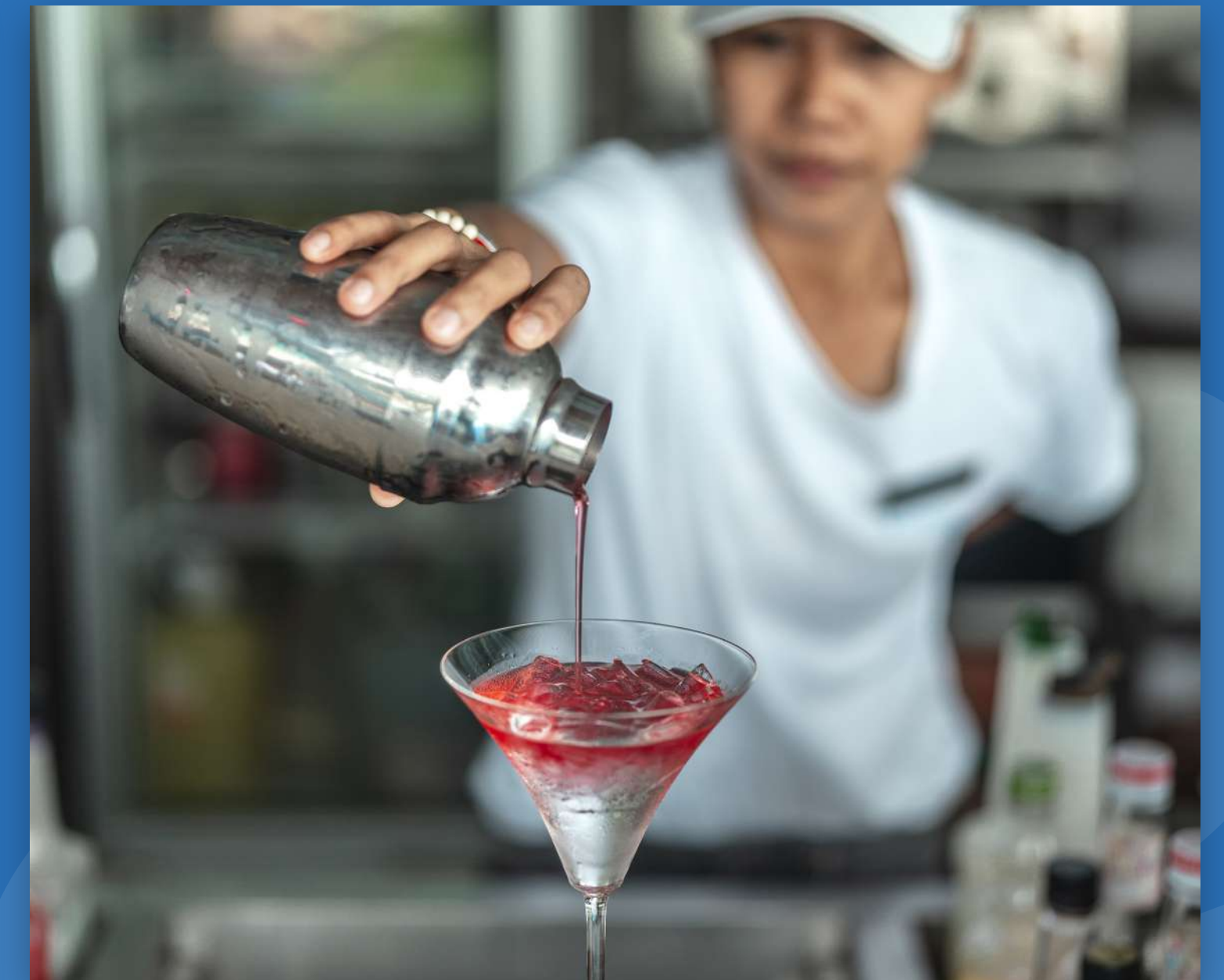
# RESTAURANT & BAR



Shore Kitchen / Grill / Bar: An all-day dining experience offering a diverse menu inspired by the rich flavors of Southeast Asia and Europe. The restaurant specializes in Western, traditional Chinese, Halal options, and other local delights.  
Timings: 06:30 AM - 10:30 PM (Breakfast, Lunch, and Dinner served daily)



# BLU BAR, ROOFTOP BAR



Enjoy exquisite cocktails under the blue sky with the breathtaking view of the Andaman Ocean. The rooftop bar offers a wide variety of all-time favourite snacks and is the ideal place for pre-dinner cocktails. Timings: 10.00 AM - 10.00 PM



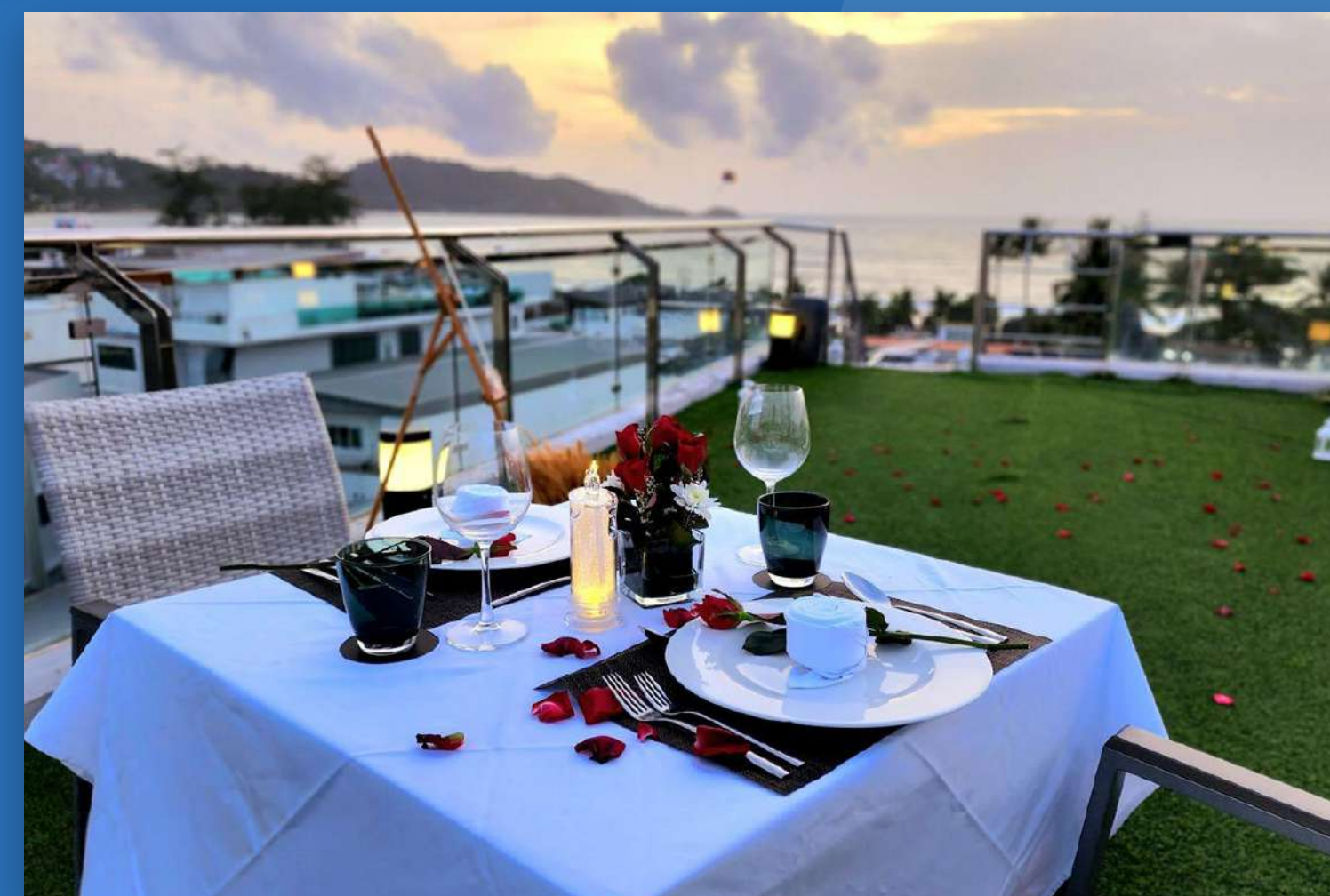
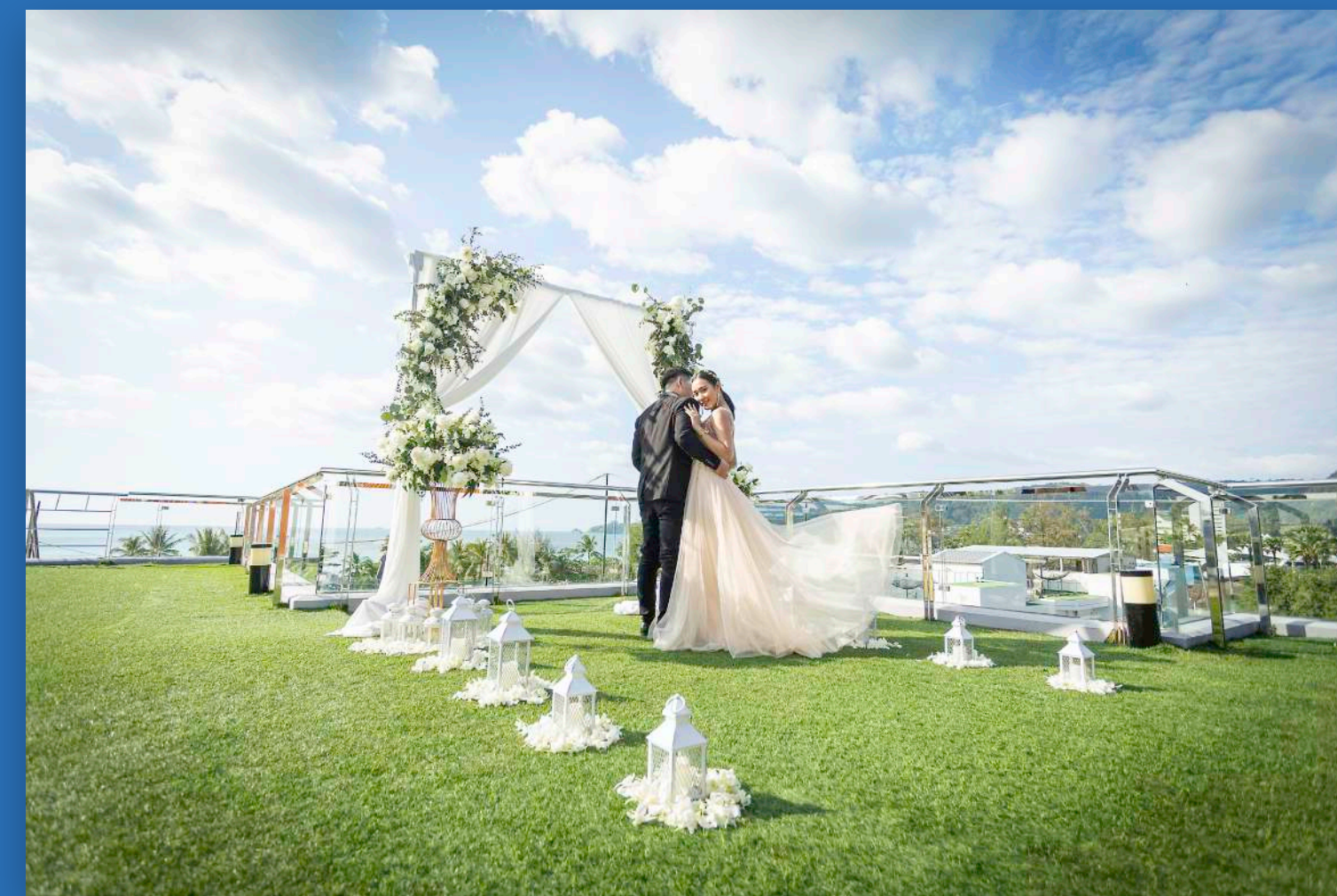
# ROOFTOP POOL



Guests can rest and relax, and enjoy the sun at our rooftop pool. Our sun loungers are a great way to soak up the rays and we always recommend our signature cocktail in hand. Timings: 07.00 AM - 10.00 PM



# SKY DECK





# FUNCTION SPACE

(provide the meeting set up in different styles) Inspiring atmosphere for various types of meetings, incentives.



- Over 69 sqm. of floor space for events up to 70 persons
- Scenic indoor spaces in heart of Patong
- Professional in-house Events team
- High-definition projectors
- Reliable 500 MB WiFi bandwidth

- Extensive menu selection
- Modern audiovisual equipment
- Creative themed events and banquets
- Additional of entertainment and shows to enhance events from traditional cultural shows to live band performances



# EVENTS SPACE OPTION

## FUNCTION ROOMS- CAPACITY



	AREA (SQM)	WXLXH (METERS)	Cocktails	Theatre	Classroom	U-Shape	U-Shape +Class room	Banquet (6-9 seat)	CABARET (6-8 SEAT)	BOARD ROOM
Clover 1	69	6.9x10x2.96	60	60	45	28	35	40-45	30-35	30
Clover 2	42	5.6x7.4x2.77	40	40	21	17	21	18-24	18-21	15

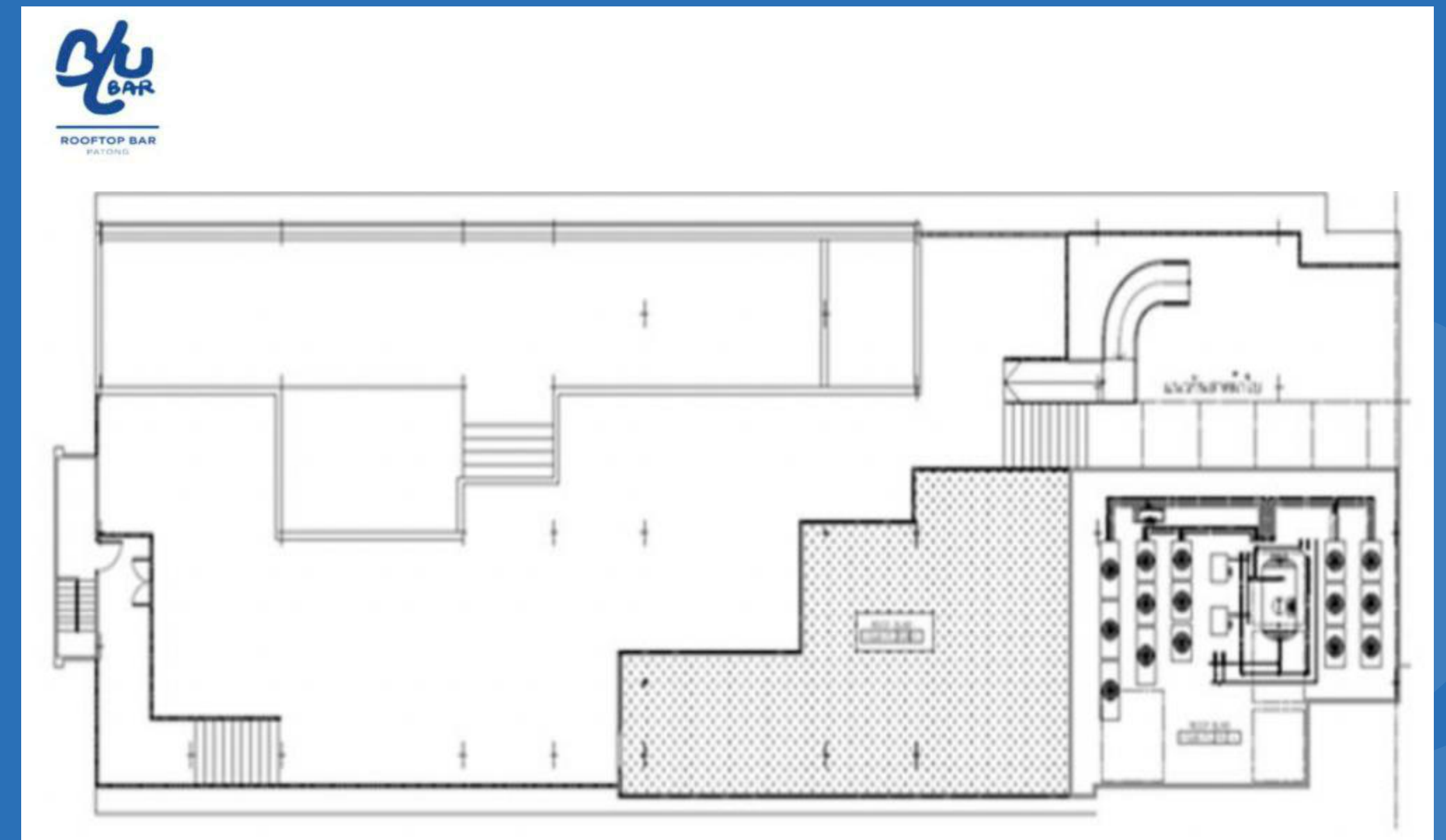
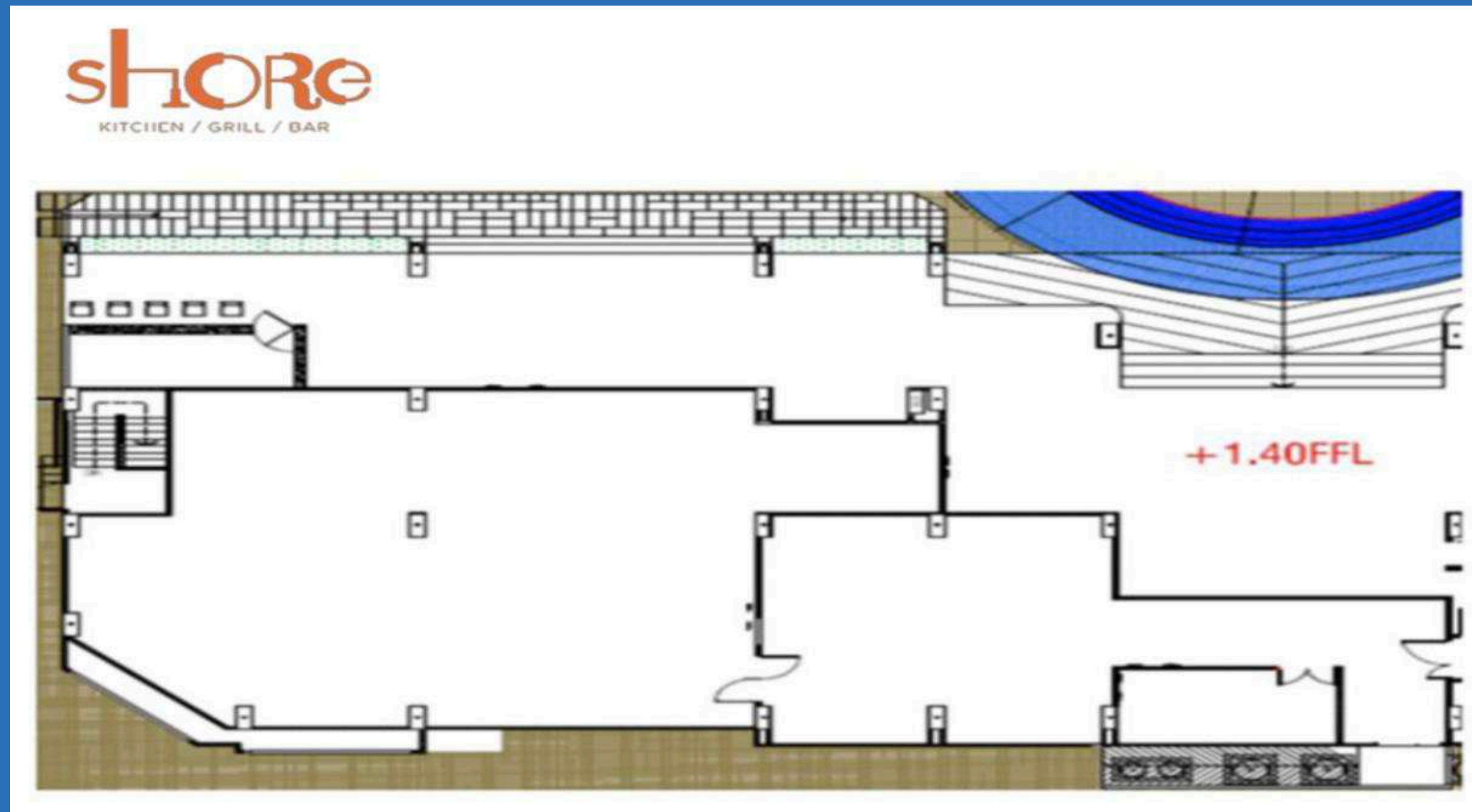
- Beverage package
- Meal package

- Buffet (Lunh/Dinner)
- Set Menu (Lunch/Dinner)

- Coffee break package



# BANQUET EVENT



## SHORE RESTAURANT SEAT CAPACITY

Buffet / Western set	
Indoor approximate	50-65 seats
Terrace approximate	20-45 seats
Total approximate	70-120 Seats
Cocktail Reception approximate	20-45 seats

## BLU BAR & LAWN SEAT CAPACITY

Buffet / Western set	
ROOF TOP approximate	80-100 seats
SKY DECK approximate	30-40 seats
LAWN approximate	30-40 seats
TOTAL approximate	140-180 Seats

## COKTAIL RECEPTION / STAND UP

ROOF TOP approximate	100-150 seats
SKY DECK approximate	30-40 seats
LAWN approximate	30-40 seats
TOTAL approximate	160-230 Seats



# FACILITIES & SERVICES



- Non-smoking room
- Handicapped room
- Fully Air-conditioned w/ individual control
- Laptop-compatible in-room safe-deposit box
- Branded bathroom amenities & hairdryer
- Laundry & dry cleaning service
- Daily housekeeping service
- Complimentary coffee & tea making



- LED HDTV w/ satellite channel
- Complimentary internet (Cabled & WIFI)
- Complimentary local calls Iron & ironing board (upon request)
- Secured key card locking system
- Tour & transport booking
- 24 Hours Front Desk
- 24 Hours CCTV
- GYM, timings from 07.00 AM - 10.00 PM



- In-Room Dining Service (room Service) : 11.00 AM - 10.30 PM
- Shore Kitchen / Grill / Bar : 06.30 AM - 10.30 PM
- Blu Bar : 10.00 AM - 10.00 PM
- Rooftop Pool : 07.00 AM - 10.00 PM
- Reception operate time 24 hours.
- Parking



# CLOVER RETREAT



## MASSAGE IN THE BIRD'S NEST

A unique and tranquil space for rejuvenating massages.  
We creating a special retreat room inspired by the beauty of a bird's nest  
and offers individual massage beds for ultimate relaxation and privacy.

Timings: 10.00 AM - 08.00 PM



# PHUKET SURF HOUSE

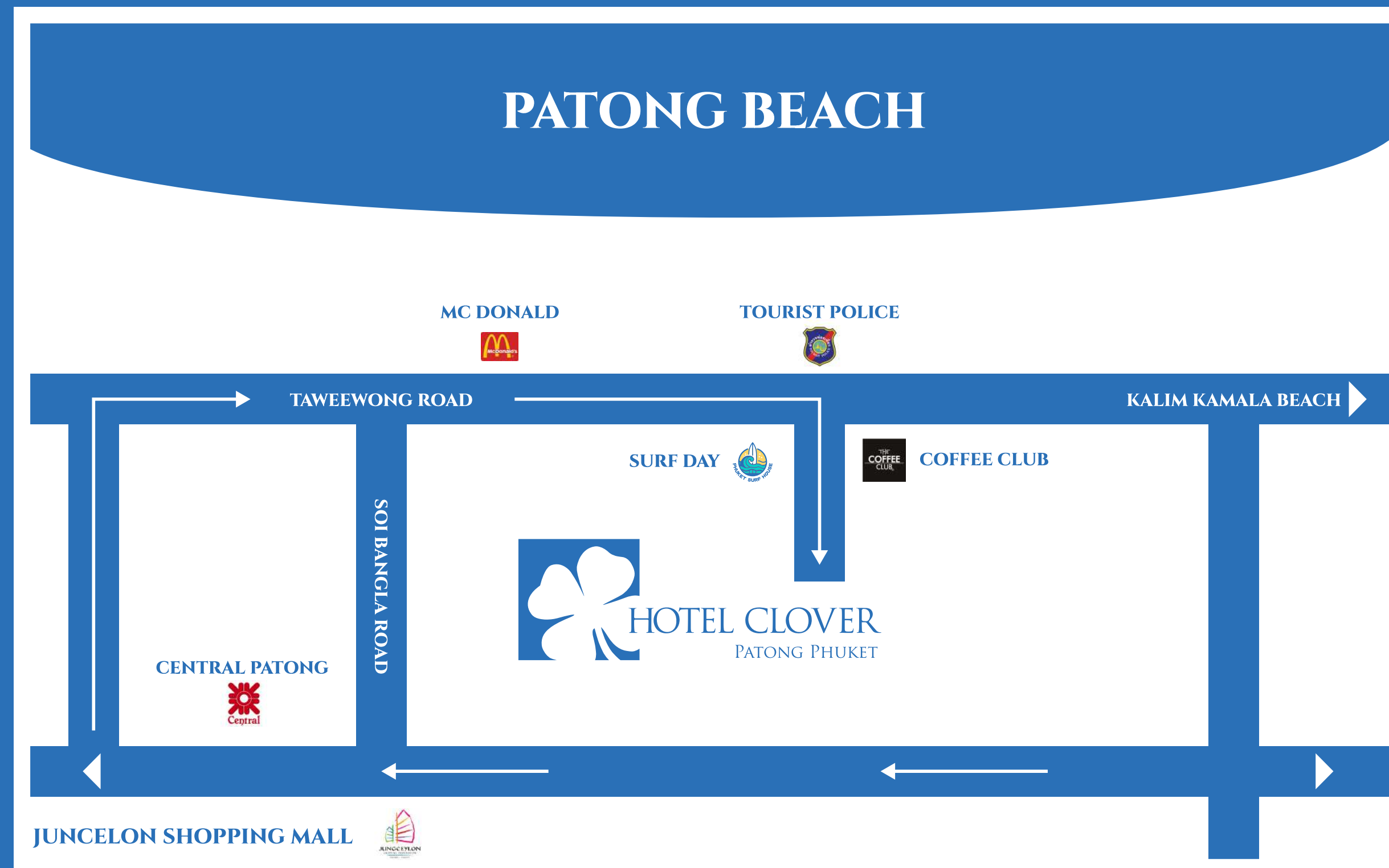


We are thrilled to invite you to an exclusive of the Phuket Surf House, where the spirit of adventure meets the beauty of the coast. Join us for an immersive experience to this unique space designed for surf lovers, beach enthusiasts, and those seeking the perfect blend of relaxation and adventure. Whether you're a seasoned surfer or someone dreaming of the ultimate coastal retreat, the Surf House is a place where passion for the waves and the sea comes alive.

Timings: 09.30 AM - 12.00 AM



# LOCATION



HOTEL WEBSITE



LOCATION

Discover the unrivalled energy of Patong, Phuket most vibrant town with Hotel Clover Patong Phuket. The hotel is a 5-minute walk to Patong Beach and Bangla Street, where the excitement begins all day long. Located at the heart of Patong, Phuket, a contemporary designed retreat paired with luxurious amenities beckons you. From tastefully-designed rooms to sumptuous breakfasts to stunning sunset views of the Andaman Ocean, curate a memorable holiday experience at Hotel Clover Patong Phuket.





HOTEL CLOVER  
PATONG PHUKET

**HOTEL CLOVER PATONG PHUKET**

162/8-11 Taweewong Road, Patong Beach, Kathu, Phuket, Thailand 83150

E: [info@hotelcloverpatong.com](mailto:info@hotelcloverpatong.com)

T: +66 76 685 088 F: +66 76 685 089

 [patongphuket.hotelclover.com](http://patongphuket.hotelclover.com)

  [hotelcloverpatongphuket](https://www.facebook.com/hotelcloverpatongphuket)