

CAPE & KANTARY  
HOTELS



CAPE PANWA HOTEL  
PHUKET, THAILAND



Beach Front

## PERFECTLY RELAXING, BEAUTIFULLY SECLUDED, DISTINCTLY CAPE PANWA

Cape Panwa Hotel is located on the quiet southern tip of the east coast of Phuket Island. Built on an old coconut plantation on a hillside, it offers panoramic views of the Andaman Sea and a secluded, palm-fringed white sand beach. The sea adjacent to the beach is calm enough for swimming or water sports all year round as it is protected from the westerly winds. The hotel is self-contained, cosy and ideal for those seeking tranquility and natural surroundings. Unlike other hotels, Cape Panwa does not suffer from the ill effects of mass tourism. It is aimed at families and individual tourists who prefer a first-class hotel in a peaceful environment.

27, 27/2 Mu 8, Sakdidej Road, Cape Panwa, Phuket 83000, THAILAND.

Tel. 66 (0)76 391 123-5

Email: [reservations@capepanwa.com](mailto:reservations@capepanwa.com)



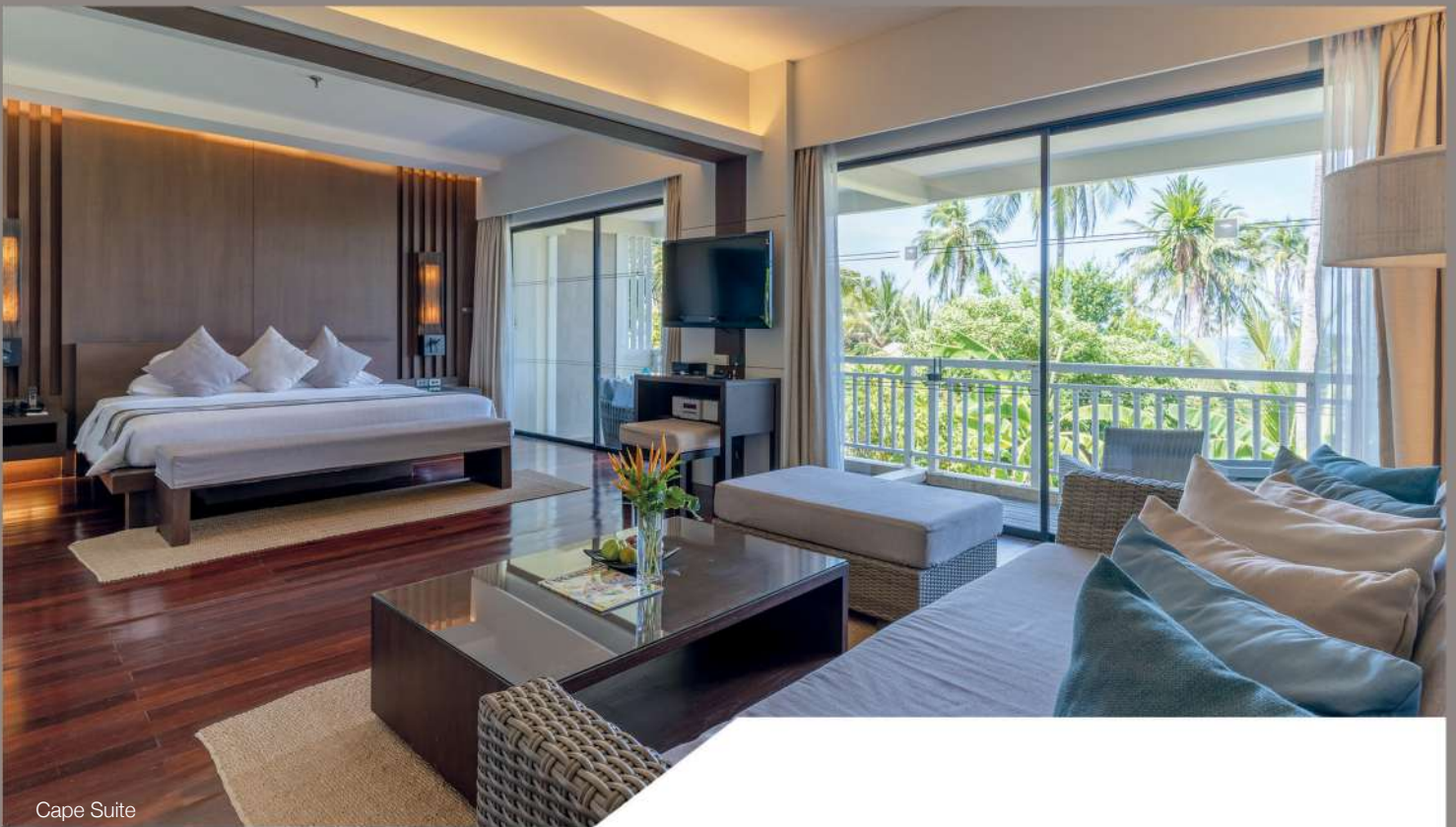
Lobby



Bird's Eye View



Round House



Cape Suite

## ACCOMMODATION

Set in lush tropical gardens with a low-rise architectural design that blends perfectly with the natural beauty of the cape and bay area, Cape Panwa Hotel offers a superb selection of sea-facing suites and villas, all luxuriously appointed with modern, five star in-room amenities and large balconies.

### Junior Suite

(55 units) Room Size: 53 sq.m.

Our Junior Suites are spacious and comfortable and feature everything required for a relaxing and comfortable stay including a private balcony, furnished with a large sunbed.

### Cape Suite

(126 units) Room Size: 78 sq.m.

A range of features includes a large sunbed, spacious, modern bathrooms and tastefully decorated living and sleeping spaces.

### Cape Signature Suite

(2 units) Room Size: 78 sq.m.

Our Cape Signature Suite features an extended sun-deck with an outdoor whirlpool and incredible views of the turquoise Sea.

### Cape Signature Corner Suite

(2 units) Room Size: 127 sq.m.

Commanding sweeping panoramic views over the Andaman Sea, the Cape Signature Suites are much sought after by celebrities and royalty alike. The sprawling suites feature large balconies and luxuriously appointed indoor living spaces.



Junior Suite



Cape Suite



Cape Signature Suite



Cape Signature Corner Suite



Balcony and Whirlpool Bath



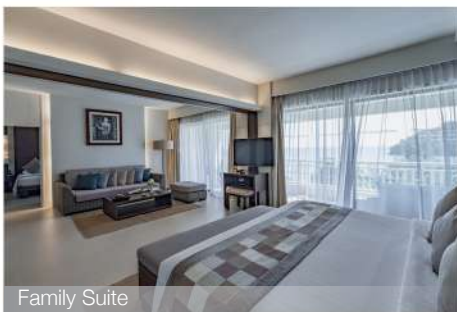
Panwa 2-Bedroom Pool Villa

## ACCOMMODATION

### Family Suite

(12 units) Size: 114sq.m.

Our Family Suites combine a luxurious Cape Suite with an adjoining Superior Room, offering all the facilities of the Cape Suite with the comfort and style of our newly renovated Superior Rooms.



Family Suite

### Panwa 2-Bedroom Pool Villa

(6 units) Room Size: 138sq.m.

Each elegantly appointed Pool Villa features a large private pool facing the beach, two separate bedrooms with large bathrooms as well as a comfortable living room.



Panwa 2-Bedroom Pool Villa

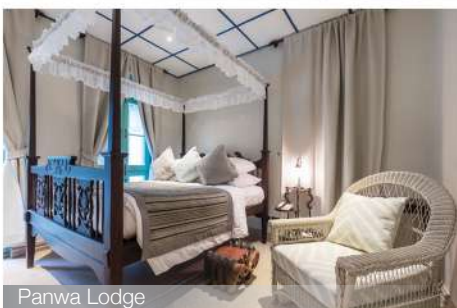
### Panwa Lodge

(1 unit) Size: 154sq.m.

This three-bedroom, private house is located a few steps from the beach in a peaceful coconut grove. Featuring its own private pool, Panwa Lodge's architecture and interior design date back to the Sino-Portuguese era in Phuket's history.



Panwa Lodge



Panwa Lodge



Living Room



Bedroom 2nd Floor



Private Spa



Swimming Pool



View Over the Bay

## ACCOMMODATION

### The Cape Absolute Suite

A baronial penthouse with awe-inspiring 360-degree views over the magnificent Andaman Sea from every angle, The Cape Absolute Suite boasts 530 square metres of understated tropical luxury over two glass-encased floors. Featuring two bedrooms, separate living and dining rooms, a private spa facility, large solid wooden sun decks and a full-sized infinity pool, it offers the absolute holiday experience...whilst being steps away from the resort's private palm-fringed beach and extensive facilities, including 9 restaurants and bars.



## HOTEL SERVICES & FACILITIES

- Secluded 300 metre sandy beach
  - 2 swimming pools
  - Fitness Centre and sauna
  - Monkeys' Club - Games room
  - Children's playground
  - Complimentary Wi-Fi access in all areas
  - Meeting facilities
  - Restaurants and bars
  - Water sports
  - Thai massage in the gardens at the beach
  - Cape Spa
  - Beauty salon
  - Cape Yacht Charters
  - Panwa Bay Village shopping area
  - Weddings
  - Airport transfer-Phuket International Airport (45 km).
    - By private minivan @ 1,200 THB net each way
    - By private limousine @ 2,800 THB net each way
- \*Prices are subject to change without prior notice.



Beach Dining



Panwa Princess



Wedding Terrace



Swimming Pool

Revitalise your body and soul in a stylish and spacious facility where sunlight and tranquility blend with superlative service. The Cape Spa offers an extensive range of massages and treatments using only the finest products and techniques to ensure that you are pampered to perfection.

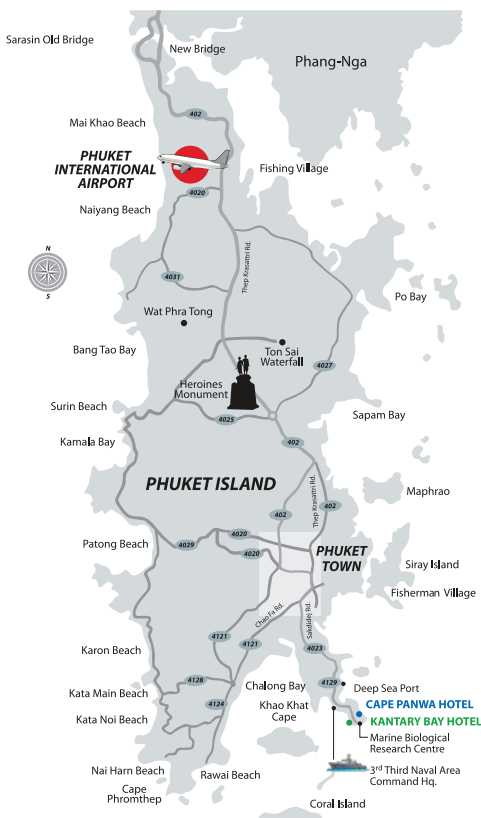




Café Andaman

## DINING AT CAPE PANWA

### HOTEL & PHUKET MAP



#### Restaurants

- **Café Andaman** : Casual, all-day Thai and international dining.  
**Opening hours:** 06.30 – 23.00
- **Panwa House** : Fine Thai dining.  
**Opening hours:** 18.30 – 23.00  
(Closed on Monday)
- **Top of The Reef** : Equisite Mediterranean cuisine.  
**Opening hours:** 18.30 – 23.00  
(Closed on Sunday)
- **Uncle Nan's Restaurant** : Classic Italian cuisine.  
**Opening hours:** 18.30 – 23.00  
(Closed on Tuesday)
- **Café Kantary** : Premium coffee, home made pastries and gelato.  
**Opening hours:** 08.00 – 23.00
- **Beach Dining** : Private dining on the beach provided on request for small and large groups

#### Bars

- **Otter's Bar** : Piano and lounge bar.  
**Opening hours:** 17.00 – 23.00  
(Closed on Wednesday and Sunday)
- **The Lighthouse** : Nautical themed pub with live music.  
**Opening hours:** 17.00 – 01.00  
(Closed on Monday and Tuesday)
- **Bamboo Bar** : Beachside snacks and drinks.  
**Opening hours:** 09.00 – 20.00  
(Kitchen at 10.00 – 19.00)

#### Room Service

Room service is available 24 hours and serves a wide range of Thai and international dishes.

Restaurant hours and menus vary based on season and are subject to change.



Top of the Reef



Panwa House



Bamboo Bar



The Lighthouse

# CAPE & KANTARY HOTELS

---



CAPE HOTEL COLLECTION

[www.capecollection.com](http://www.capecollection.com)



KANTARY COLLECTION  
HOTELS & SERVICED APARTMENTS

[www.kantarycollection.com](http://www.kantarycollection.com)



KAMEO COLLECTION  
BY CAPE & KANTARY  
HOTELS & SERVICED APARTMENTS

[www.kameocollection.com](http://www.kameocollection.com)

---

## Cape & Kantary Hotels (Bangkok Sales Office)

5<sup>th</sup> Floor, B.L.H. Building, 7/1 Wireless Road, Lumpini, Pathumwan, Bangkok 10330, THAILAND

Tel: +66 (0) 2253 3791-7

Email: [enquiries@capekantaryhotels.com](mailto:enquiries@capekantaryhotels.com)

## Australia & New Zealand (Sales Office)

Travel Loop Representation

Tel: +61 (0) 499 987 111

Email: [charlie@travelloop.com.au](mailto:charlie@travelloop.com.au)

## London UK (Sales Office)

11 Victoria Grove, London W8 5RW

Tel: +44 (0) 207 581 8281

Email: [debbiehaw@aol.com](mailto:debbiehaw@aol.com)

## Switzerland (Sales Office)

Keksconsulting KLG, Bierhausstrasse 28 CH-1712 Tafers Switzerland

Tel: +41 (0) 76 603 5828

Email: [info@keksconsulting.com](mailto:info@keksconsulting.com)

---

The descriptions of facilities and services in this brochure are intended only as a guide. Where every effort has been made to ensure accuracy at the time of printing, specifics may change in response to customer needs or as a result of renovation. Please contact the property direct to confirm the information in this brochure.

© Copyright 2026 Kasemkij Co All Rights Reserved