



Wellness

Stay and Hotel
Sukhumvit 107

Hotel Presentation

WELCOME

Facilities

- Free WiFi internet access
- Naori Restaurant
- Fitness
- Meeting Room
- Sasa Onsen & Massage
- Shuttle Van Service



Lobby

Wellness Stay and Hotel Sukhumvit 107



ROOM





136 Rooms

- 93 Superior Room
- 16 Deluxe Room
- 13 (26) Family Connecting Room
- 1 Wellness Suite

Features

TV with sattlite and
cable channel

Safety Box

Telephone

Kitchen area with
kitchenett

Microwave

Electronic Kettle

Refrigerator

Bathroom Emergency

Hairdryer

Washing Machine
(only Deluxe Room)

Superior Room

Wellness Stay and Hotel Sukhumvit 107



Deluxe Room

Wellness Stay and Hotel Sukhumvit 107



Family Connecting Room

Wellness Stay and Hotel Sukhumvit 107



Naori Restaurant



Naori Restaurant

Wellness Stay and Hotel Sukhumvit 107

● Breakfast from 06:00 - 10:30 hrs.



Fitness



Fitness

Wellness Stay and Hotel Sukhumvit 107



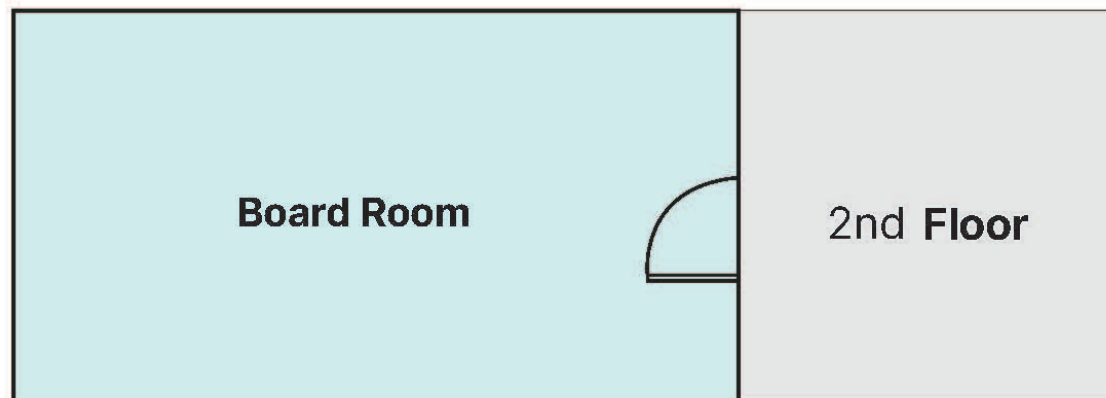
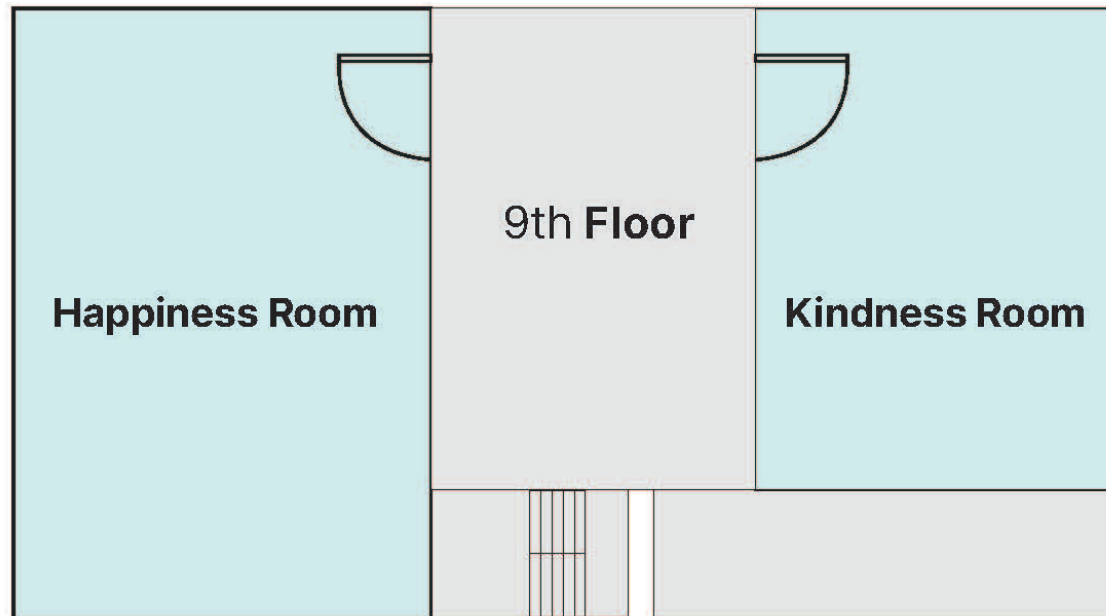
Meeting Rooms



Meeting Rooms

Wellness Stay and Hotel Sukhumvit 107





Capacity

3 meeting rooms Kindness Room, Happiness Room and Board Room

Ouradvantages

Modern meeting rooms with Wi Fi internet access and state of the art equipment Ideal for small meeting room and dining room privateparty

Includes

- | | |
|-----------------------|------------|
| Video projector | Stage |
| Sound system | Podium |
| 2 Wireless microphone | Stationery |
| 1 Table microphone | WiFi |
| Flipchart | |



Function Room	I - shape	U - shape	Theatre	Classroom	Workshops
Board Room	10	-	25	10	-
Kindness Room	35	25	60	40	30
Happiness Room	50	35	90	60	40
Co-Playing Space	-	-	20	-	-

Sasa Onsen & Massage



Sasa Onsen & Massage

Wellness Stay and Hotel Sukhumvit 107

● Available daily during 09:00 - 21:00 hrs.



Nearby Attractions



Bitec Exhibition Center

Wellness Stay and Hotel Sukhumvit 107



Imperial Samrong Shopping Mall

Wellness Stay and Hotel Sukhumvit 107



Map

Wellness Stay and Hotel Sukhumvit 107

- 10 minutes by car to BTS Bearing
- 15 minutes by BTS to Bitec Exhibition Center
- 15 minutes by BTS to Imperial Samrong Shopping Mall
- 20 minutes by car to Central Bangna
- 20 minutes by BTS to Erawan Elephant Museum

