



# REDEFINING LUXURY IN SUKHUMVIT'S DYNAMIC THONGLOR DISTRICT

---



# LUXURY HAVEN IN SUKHUMVIT'S THONGLOR DISTRICT



Discover InterContinental Bangkok Sukhumvit, a refined haven in Sukhumvit's most vibrant district. Thai-inspired design and hand woven elements are incorporated throughout the hotel. From bespoke events to rejuvenating wellness experiences, every aspect of your stay is tailored to perfection. Discover our glamorous hotel near high-end malls, trendy restaurants, and nightlife, just footsteps away from Thong Lo BTS Skytrain station. Unveil the allure of Bangkok effortlessly.

Unwind in our state-of-the-art rooms and suites, showcasing breathtaking city views and luxurious amenities. For Club InterContinental guests, enjoy access to Thonglor's finest Club Lounge. Delight in exceptional culinary adventures in our restaurants and bars; a gastronomic hub in Bangkok's emerging neighbourhood. Rejuvenate at our Japanese-Thai inspired The Spa by HARNN. Welcome to Sukhumvit's ultimate luxury destination, your memorable stay awaits.



# THE NEXT GENERATION OF LUXURY



## Thonglor District

Close to popular restaurants, upscale shopping malls, and a busy nightlife area, the hotel is also just a short walk from Thong Lo Station on the BTS Skytrain, with convenient access to the city's major attractions and MRT.



## Gastronomic Hub

Indulge in a gastronomic hub with The Lobby, an inviting all-day space for relaxation and socialising; AVA Brasserie, with international flavours and aviation-inspired design; and Rouges, a hidden gem and versatile event space.



## Club InterContinental

When you book a Club InterContinental room or suite, you'll have access to Thonglor's finest Club Lounge and magical sunset views. Enjoy a refreshing welcome drink with stunning Sukhumvit sunset views. Delight in personalised service, exquisite Thai and Asian cuisine, and cherished moments with loved ones at Club InterContinental Lounge.



## Wellness

Nourish your mind and body with our focus on nutrition, fitness programs, and access to our state-of-the-art fitness centre. Unwind in the tranquility of our indoor pool and rejuvenate in the comfort of your guest room each with its own bathtub. A sanctuary of relaxation awaits you at the Japanese-Thai inspired The Spa by HARNN.



# DISCOVER THE RICH TAPESTRY OF THONGLOR

---





# THONGLOR DISTRICT



## Explore Sukhumvit's Hottest Neighbourhood

Discover Sukhumvit, Thonglor, one of Bangkok's most diverse and culturally rich districts. Discover the convenience of our close proximity to the MRT, BTS, bus terminal, and Sukhumvit. Immerse yourself in the vibrant energy of this prime location, with its high-end shopping malls, rooftop bars, Michelin star restaurants, world famous rooftop bars, golf courses, and bustling nightlife.

## Immerse yourself in the allure of Thonglor

Thonglor is officially known as Soi Sukhumvit 55 - a remarkable road and neighbourhood nestled in Wattana District. Translating to 'molten gold,' Thonglor derives its name from the esteemed naval officer Thonglor Khamhiran, a member of the revolutionary Khana Ratsadon in 1932.

## Convenient access to the best of Bangkok

Thonglor's allure lies in its seamless accessibility. Close to popular restaurants, upscale shopping malls, and a busy nightlife area, the hotel is also just a short walk from Thong Lo Station on the BTS Skytrain, which provides convenient access to the city's major attractions, the MRT, and near the QSNCC and BITEC Bangna.

## Discover the city's most stylish hangouts

Thonglor proudly blends modernity and charm, luring visitors and Bangkok's most discerning to its enchanting streets. Here, you'll find a haven of incredible rooftop bars, trendy cafes, and the city's most stylish hangouts, harmoniously blending the contemporary with the timeless.



# OUR LOCATION

## At a Glance

- 22 mins drive from Suvarnabhumi Airport
- 28 mins drive from Dong Mueang International Airport
- 3 mins walk from BTS Skytrain Thong Lo Station
- 30 mins drive (or 25 mins via BTS Skytrain) from BITEC
- 15 mins drive from QSNCC

## BTS Skytrain & MRT

From InterContinental Bangkok Sukhumvit, a short 3 min stroll leads you to BTS Skytrain's Thong Lo Station which allows you to connect to the MRT. Embrace the energy of Sukhumvit Road as you pass vibrant venues, trendy boutiques, and captivating landmarks. Arriving at the sleek station, purchase your ticket and effortlessly explore Bangkok's dynamic landscape.

## Airport

A convenient way to get to and from the airport is either via public transport or taking a taxi or ride-hailing service like Grab. Head to the nearby Thong Lo BTS Skytrain station and board a train towards Phaya Thai Station. There, transfer to the Airport Rail Link, which takes you directly to the airport. Relax and enjoy the smooth ride, arriving at the modern and well-equipped airport ready for your next adventure.

Legend

 Hotel

 Temple

 Bus Terminal

 MRT Station

 QSNCC

 Restaurant

 Hospital

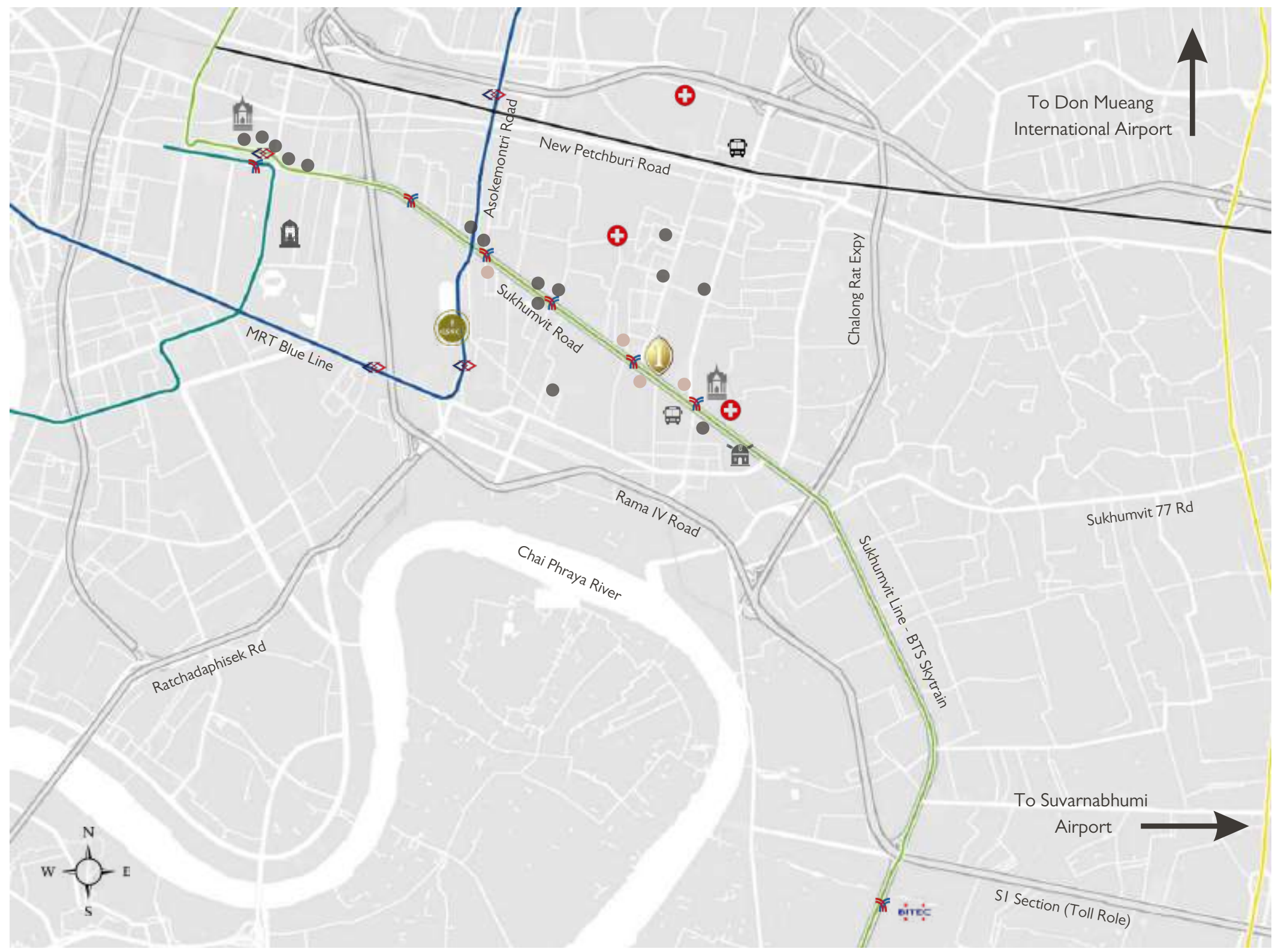
 Shopping Mall

 Plantarium

 BTS Station

 BITEC

 Shrine



# GUEST ROOMS AND SUITES

---





# ROOMS & SUITES

## At a Glance

Room Type	Size (m2)	Room Inventory	Club InterContinental
Classic King	34	108	No
Classic Twin	34	43	No
Premium	42	44	No
Premium Club InterContinental	42	22	Yes
Junior suite	58	18	Yes
Executive suite	68	5	Yes
Presidential suite	200	1	Yes

Our impressive 241 guest rooms and suites incorporate Thai-inspired design elements that captivate both local and international guests. Indulge in luxurious amenities from BYREDO, breathtaking city views, and the comfort of a bathtub in each suite.



## Room & Suite Features

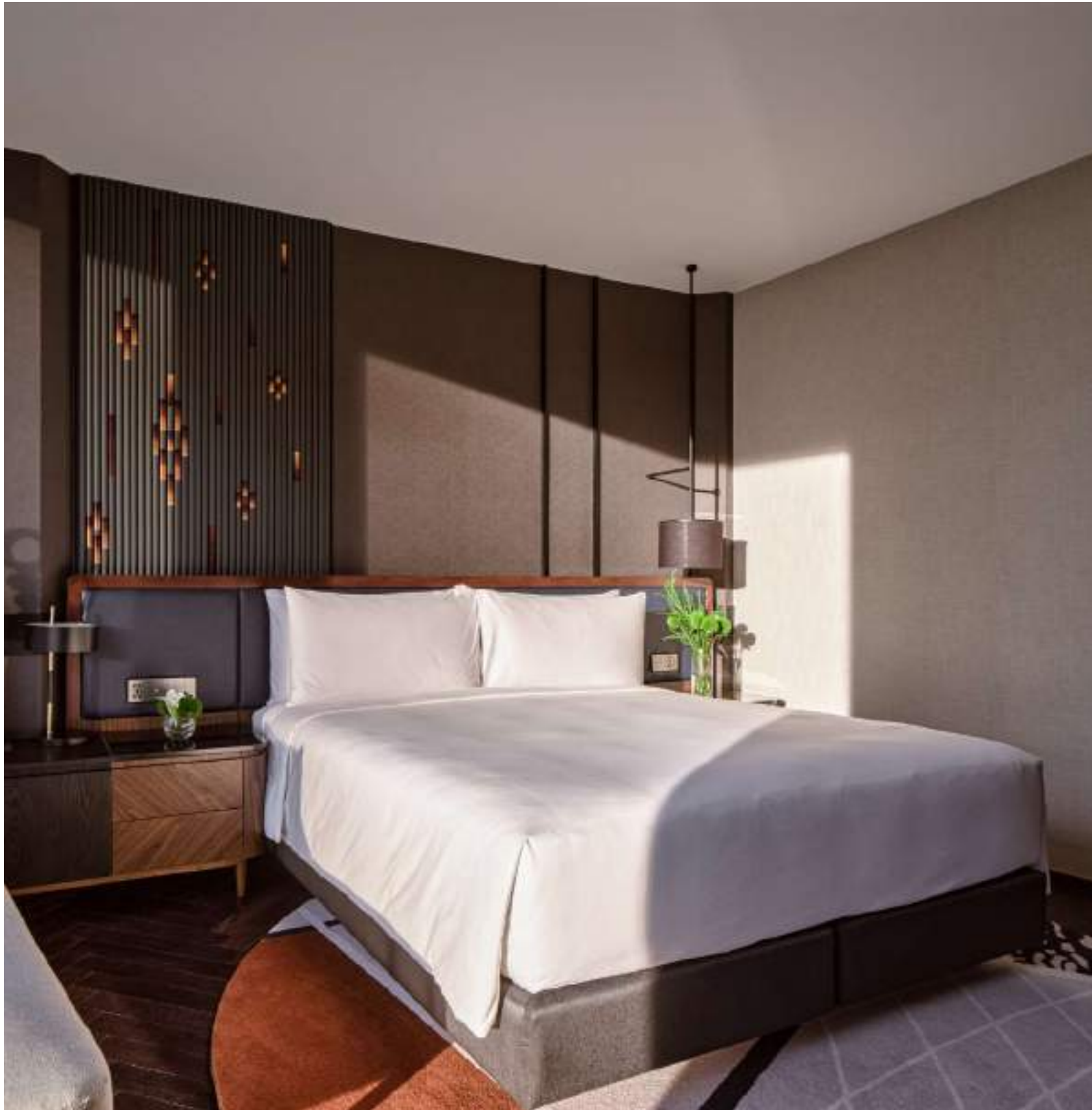
- Impressive city views
- Luxury bath tub
- Luxe beauty and bathroom products from BYREDO
- Motion sensor to detect when a room is occupied
- 55-inch Smart TV
- Broadcast devices to the TV with Chromecast
- USB ports
- Pillow menu
- Tea & coffee making facilities
- In-room phone
- iHome smart wireless bluetooth stereo
- Cocktail making set
- Complimentary Wi-fi
- In-room safe
- Minibar
- Iron & ironing board
- Daily turndown
- Individually controlled A/C
- Dry cleaning available
- 24 hour room service available
- Suites and select Premium Rooms have access to Club InterContinental



---

# ROOMS & SUITES

---



## Classic (King)

---

### Unique Room Features

- 34 sqm
- King Bed

### Featured in all Guest Rooms

- Thai-inspired interior design features
- Impressive city views
- Luxury European bathroom products from BYREDO
- Motion sensor to detect when a room is occupied
- 55-inch Smart TV
- Broadcast devices to the TV with Chromecast
- USB ports
- Pillow menu
- Tea & coffee making facilities
- In-room phone
- iHome smart wireless bluetooth stereo
- Cocktail making set
- Complimentary Wi-fi
- In-room safe
- Minibar
- Iron & ironing board
- Daily turndown
- Individually controlled air-conditioning
- Dry cleaning available
- 24 hour room service available

### Room Inventory

- 108 Rooms



---

# ROOMS & SUITES

---



## Classic (Twin)

---

### Unique Room Features

- 34 sqm
- Twin Single Beds

### Featured in all Guest Rooms

- Thai-inspired interior design features
- Impressive city views
- Luxury European bathroom products from BYREDO
- Motion sensor to detect when a room is occupied
- 55-inch Smart TV
- Broadcast devices to the TV with Chromecast
- USB ports
- Pillow menu
- Tea & coffee making facilities
- In-room phone
- iHome smart wireless bluetooth stereo
- Cocktail making set
- Complimentary Wi-fi
- In-room safe
- Minibar
- Iron & ironing board
- Daily turndown
- Individually controlled air-conditioning
- Dry cleaning available
- 24 hour room service available

### Room Inventory

- 43 Rooms



---

# ROOMS & SUITES

---



## Premium

---

### Unique Room Features

- 42 sqm
- King Bed
- Free standing, oval bathtub with a partition so you can relax and admire city views

### Featured in all Guest Rooms

- Thai-inspired interior design features
- Impressive city views
- Luxury European bathroom products from BYREDO
- Motion sensor to detect when a room is occupied
- 55-inch Smart TV
- Broadcast devices to the TV with Chromecast
- USB ports
- Pillow menu
- Tea & coffee making facilities
- In-room phone
- iHome smart wireless bluetooth stereo
- Cocktail making set
- Complimentary Wi-fi
- In-room safe
- Minibar
- Iron & ironing board
- Daily turndown
- Individually controlled air-conditioning
- Dry cleaning available
- 24 hour room service available

### Room Inventory

- 44 Rooms



---

# ROOMS & SUITES

---



## Premium Club InterContinental

---

### Unique Room Features

- 42 sqm
- King Bed
- Club InterContinental Access
- Free standing, oval bathtub with a partition so you can relax and admire city views

### Featured in all Guest Rooms

- Thai-inspired interior design features<sup>99</sup>
- Impressive city views<sup>9</sup>
- Luxury European bathroom products from BYREDO
- Motion sensor to detect when a room is occupied
- 55-inch Smart TV
- Broadcast devices to the TV with Chromecast
- USB ports
- Pillow menu
- Tea & coffee making facilities
- In-room phone
- iHome smart wireless bluetooth stereo
- Cocktail making set
- Complimentary Wi-fi
- In-room safe
- Minibar
- Iron & ironing board
- Daily turndown
- Individually controlled air-conditioning
- Dry cleaning available
- 24 hour room service available

### Room Inventory

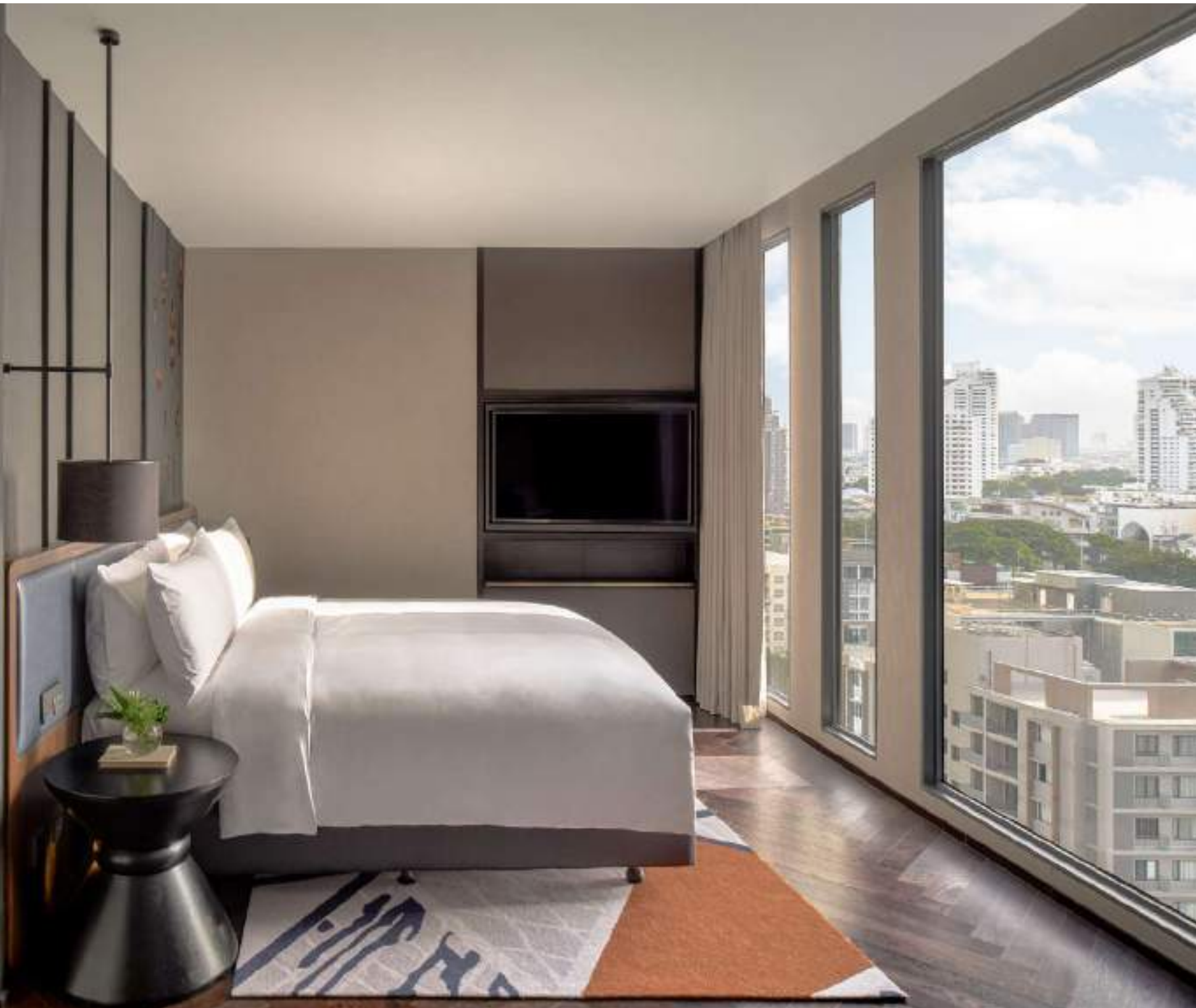
- 22 Rooms



---

# ROOMS & SUITES

---



## Junior Suite

---

### Unique Room Features

- 58 sqm
- King Bed
- Separate living area
- Corner room
- Walk in closet
- Floor to ceiling glass
- Club InterContinental Access
- Additional TV in Living Room with sound bar
- Free standing, oval bathtub with a partition so you can relax and admire city views

### Featured in all Guest Rooms

- Thai-inspired interior design features
- Impressive city views
- Luxury European bathroom products from BYREDO
- Motion sensor to detect when a room is occupied
- 55-inch Smart TV
- Broadcast devices to the TV with Chromecast
- USB ports
- Pillow menu
- Tea & coffee making facilities
- In-room phone
- iHome smart wireless bluetooth stereo
- Cocktail making set
- Complimentary Wi-fi
- In-room safe
- Minibar
- Iron & ironing board
- Daily turndown
- Individually controlled air-conditioning
- Dry cleaning available
- 24 hour room service available

### Room Inventory

- 18 Suites



---

# ROOMS & SUITES

---



## Executive Suite

---

### Unique Room Features

- 68 sqm
- King Bed
- Separate living area
- Club InterContinental Access
- Additional TV in Living Room with sound bar
- Free standing, oval bathtub with a partition so you can relax and admire city views

### Featured in all Guest Rooms

- Thai-inspired interior design features
- Impressive city views
- Luxury European bathroom products from BYREDO
- Motion sensor to detect when a room is occupied
- 55-inch Smart TV
- Broadcast devices to the TV with Chromecast
- USB ports
- Pillow menu
- Tea & coffee making facilities
- In-room phone
- iHome smart wireless bluetooth stereo
- Cocktail making set
- Complimentary Wi-fi
- In-room safe
- Minibar
- Iron & ironing board
- Daily turndown
- Individually controlled air-conditioning
- Dry cleaning available
- 24 hour room service available

### Room Inventory

- 5 Suites



---

# ROOMS & SUITES

---



## Presidential Suite

### Unique Room Features

- 200 sqm
- Dedicated work room
- Expansive living room
- Dining Room
- Private meeting room with private bathroom
- Private balcony
- Outdoor plunge pool
- Ideal for special occasions and gatherings
- Club InterContinental access
- Additional TV in Living Room with sound bar
- Free standing, oval bathtub with a partition so you can relax and admire city views

### Featured in all Guest Rooms

- Thai-inspired interior design features
- Impressive city views
- Luxury European bathroom products from BYREDO
- Motion sensor to detect when a room is occupied
- 55-inch Smart TV
- Broadcast devices to the TV with Chromecast
- USB ports
- Pillow menu
- Tea & coffee making facilities
- In-room phone
- iHome smart wireless bluetooth stereo
- Cocktail making set
- Complimentary Wi-fi
- In-room safe
- Minibar
- Iron & ironing board
- Daily turndown
- Individually controlled air-conditioning
- Dry cleaning available
- 24 hour room service available

### Room Inventory

- 1 Suite





# CLUB INTERCONTINENTAL

---





# CLUB INTERCONTINENTAL



## Opening Hours and Location

- Capacity: 46 guests
- 6 a.m. until 10 p.m.
- 31st floor with impressive views of Sukhumvit

## Unparalleled luxury in Thonglor

When you book a Club InterContinental room or suite, you'll have access to Thonglor's finest Club Lounge and magical sunset views. Enjoy a refreshing welcome drink overlooking the Sukhumvit skyline.

Delight in personalised service, exceptional Thai and Asian cuisine, and cherish moments with loved ones in the Club InterContinental Lounge.





# CLUB INTERCONTINENTAL



## Impressive Sukhumvit city views from the 31st floor

Enjoy breathtaking views of Sukhumvit and a mesmerising sunset casting a golden glow over the bustling streets below. Take in the panoramic vistas that stretch as far as the eye can see, immersing yourself in the beauty of Bangkok's skyline. It's a truly unforgettable experience that captures the essence of this vibrant city.

Open: 7 a.m. until 10 p.m.



## Culinary Creations to Enthrall

Enjoy complimentary breakfast, afternoon tea and evening bar bites. Inspired by Thai and Asian cuisine, breakfast features innovative egg dishes and continental self-service options. During afternoon tea and evening cocktail hour, indulge in set menus inspired by global destinations.

Breakfast: 7am-10am  
Afternoon Tea: 2.30pm-4.30pm  
Evening Cocktails: 5.30-7.30pm



## Artisan Beverages and Handcrafted Cocktails

Indulge in a selection of complimentary all-day non-alcoholic refreshments, including a variety of tea and coffee options, perfect for any time of the day. In the evening, treat yourself to a delightful array of handcrafted cocktails as you watch the sunset, skillfully prepared by our talented mixologists.

All-day Light Refreshments: 7 a.m.-10 p.m.  
Evening Cocktails: 5:30-7:30 p.m.



## A heightened level of luxury and indulgence

Experience the epitome of luxury and indulgence at our Club InterContinental Lounge, where every detail is meticulously curated to elevate your stay. Enjoy the convenience of private check-in and check-out, ensuring a seamless arrival and departure experience. From arranging special requests to offering expert recommendations, we strive to exceed your expectations and make your stay truly exceptional.



# A GASTRONOMIC FOOD & BEVERAGE HUB

---





## RESTAURANTS & BARS



Lobby Lounge

### Thonglor's newest Gastronomic Hub

InterContinental Bangkok Sukhumvit is a true gastronomic hub in Thonglor's burgeoning neighbourhood, with a lounge, all-day dining restaurant, and bar. Inspired by Thai culture and cuisine from around the world, the hotel's talented culinary team creates a truly unique dining experience. At AVA Brasserie and the Lobby Bar, you can indulge in a variety of nutritious and delicious dishes, skillfully crafted with a modern twist including afternoon tea. With every bite, you'll taste exquisite flavours from around the world. An enchanting selection of appetisers, savoury dishes, and irresistible desserts are available for all dietary preferences. The menu includes vegan options as well as dishes designed to promote overall well-being and reduce jetlag symptoms. Taking you on a journey of tantalising flavours, our Thai-Japanese inspired beverage menu will captivate every sense. Indulge in personalised service as we serve signature Japanese green tea, Thai tea cocktails, and barista coffee using locally sourced coffee beans. Revitalise your senses with our refreshing colour-themed juices, meticulously crafted to boost vitality.



# RESTAURANTS & BARS

## AVA Brasserie

Experience the culinary masterpiece that is AVA Brasserie. Indulge in a gastronomic journey with an aviation inspired design harmoniously blended with international flavours.

Our talented chefs curate an impressive menu that takes you on a global exploration of taste and textures.

Immerse yourself in the elegant surroundings, savour the dishes, indulge in the afternoon tea and create unforgettable memories at AVA Brasserie. Unparalleled dining experiences await at our extraordinary gastronomic haven.



## OPENING HOURS & LOCATION

- Capacity: 122 guests
- Location: 4th Floor
- Breakfast: 6 a.m. until 10:30 a.m. (Daily)
- Lunch & Dinner: 11:30 a.m. until 10:30 p.m.
- Weekend Dinner: 6 p.m. until 10 p.m.
- Sunday Brunch: 12 p.m. until 3 p.m.



# RESTAURANTS & BARS



## The Lobby

Our lobby embodies Thonglor's vibrant spirit, welcoming you to a tranquil living room. Nestled amidst our lobby, a garden view enhances the soothing ambiance, creating an oasis of tranquility. Guests are welcomed with handcrafted coffees and teas, as well as light meals and delicious Thonglor cuisine.

Savour the signature Thai-Japanese inspired beverages, including personalised Japanese green tea and Thai tea cocktails, or indulge in afternoon tea. Enjoy innovative comfort bites that fuse the flavours of both cuisines.



## OPENING HOURS & LOCATION

- Capacity: 87 guests
- 7 a.m. until 9 p.m.
- Ground floor



# RESTAURANTS & BARS

## Rogues

Discover a clandestine haven, a versatile bar where the unconventional thrives and the extraordinary comes to life. A hidden gem that beckons mischiefs and misfits alike. Indulge in our carefully crafted cocktails, enjoy the pulsating rhythms of live performances, and embrace the exclusivity of our private bar and event spaces, perfect for creating unforgettable social hours and extraordinary moments.



## OPENING HOURS & LOCATION

- Friday - Saturday: 5 p.m. – 2 a.m.
- Sunday - Thursday: 5 p.m. – midnight
- 2nd floor
- Capacity: 62 guests with private dining room



# THE SPA BY HARNN



## Opening Hours and Location

- 12 p.m. until 8 p.m.
- 32nd floor with impressive views of Sukhumvit

## Step into a Realm of Pure Bliss

The Spa by HARNN is where tranquility and rejuvenation intertwine in perfect harmony. Immerse yourself in a sanctuary inspired by the elegant fusion of Japanese and Thai traditions, where ancient healing techniques are seamlessly blended with modern luxury. Led by a team of highly skilled therapists, each treatment at The Spa by HARNN is a sensory journey, crafted to restore balance and revitalise the body, mind, and soul.

Indulge in a range of exquisite therapies and rituals within the three treatment rooms. One of the treatment rooms is suited to couples with its own private bath whilst the other two rooms are suited for those wanting to indulge on their own. Harness the power of nature's botanical treasures, carefully selected for their restorative properties. From the moment you enter the serene surroundings, you will be enveloped by a sense of calm and serenity. Surrender to the gentle touch of expert hands, as tension and stress melt away, replaced by a profound sense of well-being.

Whether you choose to immerse yourself in a revitalising massage, unwind in the tranquil ambience of our Japanese-inspired bath, or explore the transformative benefits of our holistic treatments, The Spa by HARNN offers an oasis of unparalleled relaxation.

Embrace the art of self-care and embark on a transformative journey towards inner harmony and renewed vitality. With every visit to The Spa by HARNN, you will discover a world where time stands still, and the path to true rejuvenation awaits.



# MEETING & EVENTS

---





# MEETINGS & EVENTS



## Seamless Events, Unforgettable Occasions

Discover the perfect venue for small to medium-sized gatherings, accommodating up to 300 in a 685sqm space bathed in natural light. Let our dedicated event planners tailor-make your wedding, engagement, or social gathering for an unforgettable experience.

Our commitment to excellence extends beyond the elegant setting, as we seamlessly integrate the latest technology to ensure your event or meeting runs smoothly. With state-of-the-art audiovisual equipment, high-speed internet connectivity, and cutting-edge presentation tools, our dedicated event planners work closely with you to tailor every detail to perfection, creating a truly bespoke and unforgettable occasion.

Trust us to bring your vision to life and exceed your expectations with our unrivaled expertise and meticulous attention to detail.





# MEETINGS & EVENTS

## AT A GLANCE

Room	Area (sqm)	W x L x H (m)	Cocktail Reception	Conference	Theatre	Classroom	U-Shape	Banquet (Round of 8)
Topaz Ballroom	270	15 x 18 x 4	150	120	150	100	40	100
Citrine Room	265	11 x 24 x 4	100	100	120	80	30	80
Jasper Room	50	6 x 8 x 4	25	20	40	20	15	30
Pre-Function Foyer	100	11 x 9 x 4	30	-	-	-	-	-
Presidential Suite	200	9 x 23 x 3	30	-	-	-	-	-

## Special Features

- Multipurpose spaces equipped with cutting-edge technology
- Ability to support both physical and hybrid virtual events
- EV car charging and convenient automated self-parking with capacity for 160 cars
- Presidential Suite with its private outdoor balcony is ideal for intimate social gatherings and private events

Elevate your meetings and events with versatile and stylish spaces cater to medium-sized gatherings. Each of our meeting spaces have been thoughtfully named after various yellow jewels inspired by their namesake 'Thong' and also an important part of Thai culture. Our dedicated event planners are here to tailor every occasion to your specific needs, ensuring a seamless and unforgettable experience.





# MEETINGS & EVENTS



## Topaz Ballroom

Experience the pinnacle of excellence in meetings and events in the Topaz Ballroom, thoughtfully named after Topaz stones (พลอยโทแพซ) which are an important part of Thai culture. Immerse yourself in the contemporary ambiance, meticulously designed to inspire and captivate. Whether you're hosting a social soirée, a high-profile conference, or a corporate gathering, the Topaz Room seamlessly blends style and functionality to create an unparalleled setting.

Our dedicated team of event planners is committed to bringing your vision to life, tailoring every aspect of your occasion to perfection. With their unwavering attention to detail, they ensure a flawlessly executed and unforgettable experience for you and your esteemed guests. Equipped with cutting-edge technology, the Topaz Ballroom caters to both physical and hybrid virtual events, providing a seamless and immersive environment for all attendees.

## Highlights

- Capacity: 40-150 guests
- Area: 270 square-metres
- Location: 3rd Floor



# MEETINGS & EVENTS



## Citrine Room

Citrine Room's contemporary interiors exude elegance and sophistication, creating an atmosphere that is both inspiring and impressive. In Thai culture, Citrine stones (พลอยขี้ต้อน) are considered sacred and important. Whether you're organising a social event, a grand ball, or a corporate meeting, this space is the perfect blend of style and functionality.

Our dedicated event planners are committed to understanding your unique vision and customising every aspect of your event to surpass your expectations. The Citrine Room is equipped with state-of-the-art technology, allowing for seamless integration of physical and hybrid virtual events, providing you with utmost flexibility.

## Highlights

- Capacity: 30-120 guests
- Area: 265 square-metres
- Location: 3rd Floor



# MEETINGS & EVENTS



## Jasper Room

Elevate your meetings and events to new heights in the Jasper Room. With its stunning contemporary interiors, this versatile space is designed to inspire and impress, just like Jasper stones (เจสเปอ์) which are considered sacred and important in Thai culture. Whether you're hosting a small corporate gathering, a team brainstorming session, or an intimate social event, the Jasper Room offers the perfect blend of style and functionality.

Our dedicated event planners will work closely with you to tailor every detail to your specific needs, ensuring a seamless and unforgettable experience for you and your guests. Equipped with cutting-edge technology and the ability to support both physical and hybrid virtual events, this multipurpose space is fully prepared to meet your event requirements.

## Highlights

- Capacity: 15-40 guests
- Area: 50 square-metres
- Location: 3rd Floor



# MEETINGS & EVENTS



## Pre-Function Foyer

The Pre-Function Foyer is a versatile space designed to enhance your event experience. With a capacity to accommodate up to 30 guests and spanning across 100 square metres, it provides a spacious and stylish setting for pre-event networking, cocktail receptions, or small gatherings.

The contemporary design and elegant décor create an inviting atmosphere, setting the stage for a seamless transition into the main event space. Whether you're hosting a corporate meeting, a social celebration, or a special occasion, the pre-function area offers the perfect space to welcome and engage your guests in style.

## Highlights

- Capacity: Up to 30 guests
- Area: 100 square-metres
- Location: 3rd Floor



# MEETINGS & EVENTS



## Presidential Suite

Indulge in unparalleled luxury in the hotel's extraordinary 200 sqm Presidential Suite on the 30th floor. Step into the expansive living room with your own private outdoor balcony, offering panoramic views of the city's breathtaking skyline. The outdoor plunge pool beckons you to soak in the tranquil ambiance.

A dedicated working room offers a private space for productivity, while a sophisticated dining room sets the stage for intimate gatherings and memorable meals.

For those seeking a blend of business and pleasure, a private meeting room with an attached bathroom is available, providing a convenient space for private discussions or small-scale corporate engagements. Whether you seek a haven for a luxurious residential stay or wish to host intimate social gatherings and private events, the Presidential Suite sets the stage for unforgettable moments.

## Highlights

- Capacity: Up to 30 guests
- Area: 200 square-metres
- Location: 30th Floor



# IHG® ONE REWARDS

## IHG® One Rewards

Discover the freedom of travelling your way with an IHG® One Rewards membership, designed to offer you the flexibility and recognition you deserve as a loyal IHG guest. Complimentary to join, you will start earning points every time you stay at more than 6,000 IHG hotels worldwide. Enjoy a suite of member benefits:

### Here's how it works

- Up to 3% more savings with 'Your Rate'
- Earn points for reward nights
- Access to member rates & offers
- Be the first to know about special offers
- Stay connected with complimentary WiFi access
- Late Check-out
- Aspire to Elite membership and enjoy Bonus Points, Reward Night Discounts, Welcome Amenity, Milestone Rewards and more
- No blackout dates for Rewards Night





# IHG® BUSINESS REWARDS

## IHG® Business Rewards

When you make bookings on behalf of others, for business or for pleasure, we're here to reward you. With IHG® Business Rewards, you can earn points every time you book accommodations, meetings, or events at nearly 6,000 participating IHG® Hotels & Resorts worldwide. Here's how it works:

### Here's how it works


- Join IHG Business Rewards and earn 3 points per \$1 USD.
- Book corporate meetings and events like weddings for your group.
- Take advantage of our promotions that can help you earn rewards faster.


### The benefits of IHG Business Rewards


- Earn points: 3 points for every \$1 USD spent on accommodations, meetings and/or events.
- Loyalty benefits: Earn Elite status and redeem points for stays, merchandise from the IHG One Rewards catalogue, and more.
- Hotel choices: Nearly 6,000 participating hotels worldwide.
- Manage just one account: One membership number manages your IHG Business Rewards and IHG One Rewards activity.





 @interconbangkoksukhumvit

 @intercontinentalbangkoksukhumvit

 @intercontinental-bangkok-sukhumvit

 @Interconbangkok



INTERCONTINENTAL®  
HOTELS & RESORTS

*Thank you*