

GRAND HYATT BEIJING AT ORIENTAL PLAZA

1 East Chang An Avenue,
Beijing 100738,
People's Republic of China

TELEPHONE +86 10 8518 1234
FAX +86 10 8518 0000

grandhyattbeijing.com

GRAND | HYATT
君悦酒店



RESTAURANTS & BARS

- *Made in China* - The saying goes, you haven't experienced Beijing until you've dined at Made in China. An award-winning culinary destination for more than two decades, Made in China is the place to savor authentically crafted Beijing classics, including the signature Peking duck.
- *SHUO* - Set to be a party and gathering spot, Shuo is a stylish and vibrant steakhouse and bar where guests can enjoy grilled dry-aged steaks, seafood and curated cocktails in a relaxing atmosphere with live DJ music.
- *Balcony* - An interactive buffet casual dining concept, specializing in premium international fare, and Beijing home-style comfort ambience. The Balcony offers heritage views alongside premium dining throughout the day. Its long space follows the unique curvature of the building, with floor-to-ceiling windows maximizing the striking view of the rooftops of ancient Peking Union Medical College.
- *Fountain Lounge* - Conceived as a contemporary Beijing courtyard, it features two elegant drinking and dining areas. Dominating the west end is a birdcage-like server's area where guests can enjoy signature afternoon tea, while the east end showcases a glamorous Champagne Bar.
- *Patisserie* - The Patisserie is designed as an elegant purveyor of luxury goods where baked confections and artisanal treats are treated with the reverence. It offers an array of inspirational gourmet and gifts including Chiffon cakes, The Patisserie's signature bake. Handmade pralines, chocolate truffles and exquisitely packaged hampers are among the top picks which guests can take away.

DOUBLE AIR FILTER SYSTEM

Grand Hyatt Beijing and the entire Beijing Oriental Plaza complex has installed a new air filter system to minimise PM2.5 pollutants.

Maintaining ideal indoor air quality, 24 hours daily furthre comfort and well-being of our guest.

RECREATIONAL FACILITIES

- A 55-meter resort-style indoor swimming pool with a virtual sky. Currently the facilities are being upgraded and the operation is suspended.
- Oasis Club Fitness Center is equipped with Technogym advanced fitness equipment and experienced trainers.
- The spa offers a wide range of body and facial treatments, as well as manicure services for you to rejuvenate and relax.
- Ride bicycles to discover Beijing in the up close and personal way. For a cycling map and more information, please visit the Concierge, located at the Lobby level or dial +86 10 8518 1234 ext. 6171/6172.
- Fitness and well-being classes.
- Use of bicycles.

LOCATION

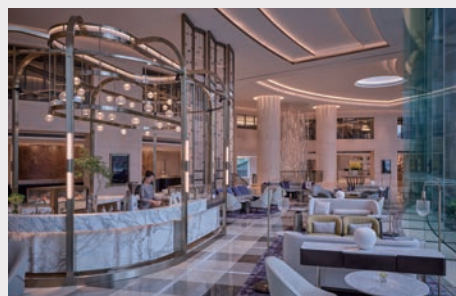
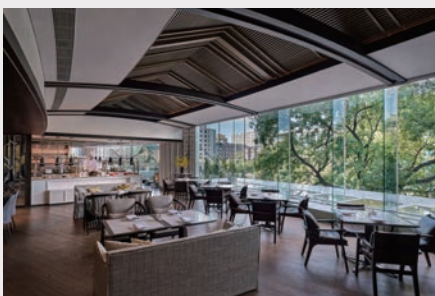
Encompassing the crossroads of Chang An Avenue and Wangfujing area, the hotel is part of Beijing Oriental Plaza. Located in the prime business and shopping district, Grand Hyatt Beijing is within walking distance of The Forbidden City and Tiananmen Square.

POINTS OF INTEREST

- The Forbidden City
- Tiananmen Square
- The Temple of Heaven
- The Lama Temple
- The Summer Palace
- The Great Wall
- The Bird's Nest
- The Water Cube

DIRECTIONS

- From International Airport (30 miles):
40 mins.by car
- From Beijing Railway Station (1.5 miles):
10 mins.by car
- From Beijing South Railway Station (9.1 miles):
40 mins.by car
- From Beijing Daxing International Airport (46 miles):
50 mins by car



**GRAND HYATT BEIJING
AT ORIENTAL PLAZA**

1 East Chang An Avenue,
Beijing 100738,
People's Republic of China

TELEPHONE +86 10 8518 1234
FAX +86 10 8518 0000

grandhyattbeijing.com



ACCOMMODATIONS

- 518 luxurious and comfortable rooms and Suites
411 currently on sale

All Accommodations Offer:

- In-room air-conditioning control panel
- In-room self service coffee and tea, bottled mineral water
- Extend work station with USB charging outlets with iPod docking station
- Fully-stocked private bar and refrigerator with welcome fruits

GUESTROOMS AND SUITES

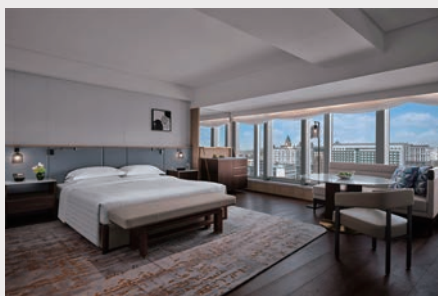
Grand Room (King/Twin)	75	Rooms
1 King City View	35	Rooms
Premium Room (King/Twin)	66	Rooms
Deluxe Room (King/Twin)	46	Rooms
1 King Bed Premier	29	Rooms
Grand Suite (King/Twin)	19	Rooms
1 King Bed Studio	26	Rooms
Suite King Premium	6	Suites
Club Room (King/Twin)	14	Rooms
Club Deluxe Room (King)	6	Rooms
Club Suite (King/Twin)	38	Suites
Club Premium Suite (King/Twin)	26	Suites
Club Deluxe Two-Bedroom	9	Suites
Club Two-Bedroom Premier	9	Suites
Grand Executive Suite	2	Suites
Diplomat Suite	3	Suites
Ambassador Suite	1	Suite
Presidential Suite	1	Suite

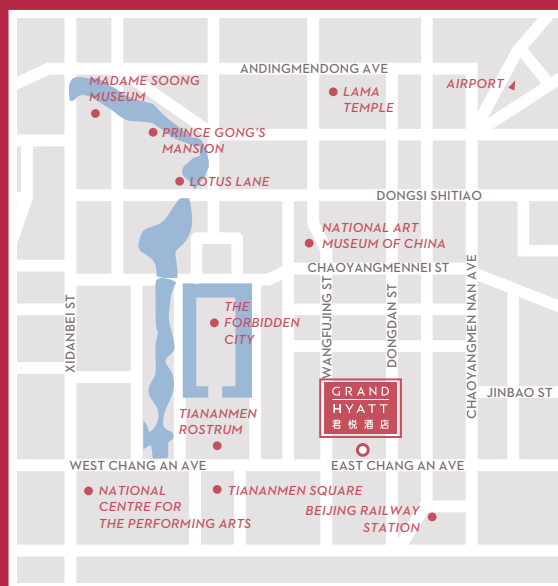
GRAND CLUB

- Located on 17 Floor and with best views
- Personalized check-in, express check-out and concierge service
- Daily breakfast at Grand Club Lounge
- Refreshments throughout the day and evening cocktails are served at Grand Club Lounge
- Wireless and in-room broadband Internet access
- A boardroom for Grand Club guest's use, with the first hour
- Pressing service (one set of suit per stay)
- Personalized concierge service

SERVICES AND FACILITIES

- Airport limousine and personal airport greeting
- Group check-in and check-out
- Business Center providing conference, translations, courier services, library facilities, laptop computers and rental of technology and communication equipment, mobile phone and secretarial services
- High-speed Internet access and wireless connectivity throughout the hotel
- Multilingual hotel associates
- Assistant Manager / Concierge
- Room Service
- Laundry and valet services
- Parking for up to 2,000 vehicles
- Direct access to shopping arcade
- Sightseeing tours / customized private tours
- Foreign currency exchange service
- Hyatt Worldwide Reservation Center
- In-house floristry
- Secretariat or Group check-in can be arranged in the hotel lobby
- Safe-deposit boxes





GRAND | HYATT
君悦酒店

GRAND HYATT BEIJING AT ORIENTAL PLAZA

1 East Chang An Avenue, Beijing 100738, People's Republic of China

Telephone +86 10 8518 1234 Facsimile +86 10 8518 0000

grandhyattbeijing.com



Follow us on WeChat