


HOTEL RIU ATOLL ****
DHAALU ATOLL

Maafushi Island · Dhaalu Atoll · Maldives

ALL INCLUSIVE 24H

All Inclusive 24
by RIU
ROOMS

264

SMOKING POLICY

 Non-smoking environment
 Only permitted in designated areas

SEASON

Open all year round

Remarks

Toilet with hygienic shower.

Location

| | | |
|--------------------|--------------------------------------|----------------|
| Right on the beach | Maafushi island | |
| Closest city | Kudahuvadhoo | 5 km approx. |
| Airport | Local airport on Kudahuvadhoo island | 5 km approx. |
| Airport | Velana International airport (MLE) | 180 km approx. |

General info

Situated on the private island of Maafushi, which is part of Dhaalu Atoll. It is connected by a walkway with the neighbouring Kedhigandu island, where the hotel Riu Palace Maldivas is situated. There are 1 or 2-storey villas with several rooms, some of them located over the water. The spectacular natural beauty of the area selected for these establishments, together with the quality of RIU services, will make this a top notch vacation destination.

Building details

| NO. | BUILDING | FLOORS INCL. | GROUND FLOOR | LIFTS | ROOMS | COMMENTS |
|-----|---------------|--------------|--------------|-------|-------|-------------------------------|
| 1 | Main building | 1 | | - | - | |
| 19 | Villas | 2 | | - | 228 | Double rooms and Beach rooms. |
| 12 | Villas | 1 | | - | 36 | Overwater junior suites. |

TOTAL: 264 ROOMS

Remarks

Construction & Renovations

Built in: 2019

Riu hotel since: 2019

Environmental best practices

| GROUP | MEASURE |
|---------------|--|
| Communication | Environmental training for staff |
| Energy | Low-energy lighting |
| Energy | Main switch in guest rooms |
| Waste | Environmentally-friendly purchasing policy |
| Water | Eco-Friendly towel change policy |
| Water | Hot-cold mixer tap |
| Water | Use of biodegradable cleaning agents |
| Water | Water saving aerator |
| Water | WC watersaving flush |

Awards & Certifications

| AWARDS & CERTIFICATIONS | YEAR | COMMENTS |
|---|------|-------------|
| TUI Top 100 Hotels | 2024 | |
| TripAdvisor® Travellers' Choice | 2023 | 2022. |
| HolidayCheck Recommended | 2023 | 2021. |
| Booking Traveller Review Awards | 2023 | 2021, 2020. |
| Customer Excellence Awards by BA Holidays | 2022 | |
| TUI Top Quality | 2022 | |
| HolidayCheck Special Award | 2021 | |
| Preverisk COVID-19 Hygiene Response | 2020 | |
| Travelife Gold Award | | |


HOTEL RIU ATOLL ****
 DHAALU ATOLL

All Inclusive 24
by RIU

Facilities

Hotel Facilities

| AVAILABLE | TYPE | COMMENTS |
|-----------|--|-------------------|
| ✓ | Restaurants | 3 restaurants. |
| ✓ | Bars | 3 bars. |
| ✓ | Pools | 2 swimming pools. |
| ✓ | RIU Land kids' club | |
| ✓ | Free WiFi throughout hotel | |
| ✓ | Gym | |
| ✓ | Wellness centre | |
| ✓ | Boutique/Kiosk | |
| ✓ | Doctor (on request, additional charge) | |

✓ Available ✗ Not available

Reception

Reception opening hours: 24 hours

Reception staff speak: English · Dhivehi

Local languages: Dhivehi

Local currency: Maldive Rufiyaa

Reception services

| TYPE | ON REQUEST | EXTRA CHARGE | COMMENTS |
|-----------------|------------|--------------|----------|
| Laundry service | ✓ | ✓ | |

Means of payment

Currency exchange in hotel

Accepted credit cards: MasterCard · Visa · Amex · Union Pay

Additional Information

No pets allowed.

Wellness & Beauty

| DESCRIPTION | NAME / LOCATION | NO CHARGE | EXTRA CHARGE | COMMENTS |
|--------------|-----------------|-----------|--------------|----------|
| Spa | Renova | | ✓ | |
| Beauty salon | | | ✓ | |
| Hairdresser | | | ✓ | |
| Massages | | | ✓ | |
| Steam bath | | ✓ | | |
| Gym | | ✓ | | |

Sports shoes are compulsory when using the gym.

Use of the gym and steam bath is restricted to guests over 18 years old.

External Facilities

| TYPE | TYPE/NAME | DISTANCE APPROX. | LOCATION | COMMENTS |
|----------|-----------|------------------|----------|----------|
| Hospital | | 5 km | | |


HOTEL RIU ATOLL ****
DHAALU ATOLL

All Inclusive 24
by RIU

Food & Beverages
Restaurants

| TYPE | NAME | OPENING | BUFFET / MENU / SNACKS | COMMENTS | NO SMOKING | AIR COND. | TERRACE |
|--------------------|-----------------------|--------------|------------------------|--|------------|-----------|---------|
| Main restaurant | Dhoni | | | | ✓ | ✓ | ✓ |
| | Breakfast | 07.30-10.30h | Buffet | Varied buffet and live cooking stations. | | | |
| | Lunch | 13.00-15.00h | Buffet | Buffet with live cooking stations and assorted desserts. | | | |
| | Dinner | 18.30-22.00h | Buffet | Buffet with live cooking stations and assorted desserts. Vegetarian options available. Special evenings: twice a week. | | | |
| Italian restaurant | Sofia | | | Reservation required. | ✓ | ✓ | |
| | Optional dinner | 18.30-22.00h | à la carte | Starters and desserts buffet. | | | |
| Steakhouse | Beef Steak House | | | | ✓ | | ✓ |
| | Continental breakfast | 10.30-12.30h | | | | | |
| | Optional dinner | 18.30-22.00h | à la carte | Reservation required. | | | |

Additional information

| RESERVATION REQUIRED | EXTRA CHARGE | COMMENTS |
|----------------------|--------------|---|
| | | Opening and meal times are subject to change. |

Bars

| TYPE | NAME | OPENING | COMMENTS | AIR COND. | TERRACE |
|-------------------------------|------------|--------------|--|-----------|---------|
| Lounge bar | Boduberu | 18.00-24.00h | | ✓ | ✓ |
| Sports bar | | 0.00-24.00h | | ✓ | |
| Poolside bar with swim-up bar | Sunshine** | 10.30-18.00h | **Access to the swim-up bar is restricted to guests over 18 years old. | | ✓ |


HOTEL RIU ATOLL ****
 DHAALU ATOLL

All Inclusive 24
 by RIU

All Inclusive
ALL INCLUSIVE FACILITIES

All meals, snacks, domestic and international alcoholic and non-alcoholic beverages in all hotel bars and restaurants.

Wines from the speciality wine list and a selection of premium drinks with extra charge.

Snacks and drinks 24 hours a day.

Free wellness facilities as described.

Free sports, activities and entertainment programme as described.

In-room safe.

Regularly refilled minibar.

In OW Junior suites and OW Superior junior suites: regularly restocked liquor dispenser.

WiFi throughout the hotel.

All hotel guests are required to wear an "All Inclusive" wristband for identification purposes.



HOTEL RIU ATOLL ****

DHAALU ATOLL

All Inclusive 24
by RIU

Outdoor areas

Swimming pools

| AVAILABLE | POOL TYPE | SIZE (SQ M) | HEATED IN WINTER | SWIM-UP BAR (+18 YEARS) | COMMENTS |
|-----------|-----------------|-------------|------------------|-------------------------|----------|
| ✓ | Outdoor pool | - | | ✓ | |
| ✓ | Children's pool | - | | | |

Remarks

Access to the swim-up bar is restricted to guests over 18 years old.

Pool area

| AVAILABLE | POOL FACILITIES | DEPOSIT REQUIRED | COMMENTS |
|-----------|---------------------|------------------|----------|
| ✓ | Sun terrace | | |
| ✓ | Sun loungers | | |
| ✓ | Parasols | | |
| ✓ | Pool towels | | |
| ✓ | Sunken sun loungers | | |

Beach

Name: Maafushi island

Beach facilities

| AVAILABLE | BEACH FACILITIES | PROVIDED BY HOTEL | LOCAL PROVIDER | EXTRA CHARGE | ALSO IN WINTER | COMMENTS |
|-----------|------------------|-------------------|----------------|--------------|----------------|----------|
| ✓ | Sun loungers | ✓ | | | ✓ | |
| ✓ | Towels | ✓ | | | ✓ | |
| ✓ | Parasols | ✓ | | | ✓ | |

Remarks

The sandy beach and the coral reefs offer ideal opportunities for scuba diving.



HOTEL RIU ATOLL ****

DHAALU ATOLL

All Inclusive 24

by RIU

Activities & Entertainment

Sports

| AVAILABLE | ACTIVITY | NO CHARGE | EXTRA CHARGE | HOTEL | LOCAL PROVIDER | DISTANCE APPROX. | COMMENTS |
|-----------|--|-----------|--------------|-------|----------------|------------------|----------|
| ✓ | Gym | ✓ | | ✓ | | | |
| ✓ | Group fitness activities in the RIU Fit area | ✓ | | ✓ | | | Daily. |
| ✓ | Stand up paddle surfing (SUP) | ✓ | | ✓ | | | |
| ✓ | Kayaking | ✓ | | ✓ | | | |
| ✓ | Pedaloos | ✓ | | ✓ | | | |
| ✓ | Snorkel gear | ✓ | | ✓ | | | |
| ✓ | 1 scuba tryout in the pool | ✓ | | ✓ | | | |
| ✓ | Scuba Diving School (PADI) | | ✓ | | ✓ | | |

Sports shoes are compulsory when using the gym.

Use of the gym is restricted to guests over 18 years old.

The practice of water sports included in the "All Inclusive" is limited to the area marked in front of the water sports centre.

The RIU Group has no direct or indirect relationship with external services/local providers (especially PARASAILING) and does not assume any liability for them, any contract between them being the exclusive responsibility of the clients themselves.

Entertainment

| AVAILABLE | ACTIVITY | TIMES A WEEK | NO CHARGE | EXTRA CHARGE | COMMENTS |
|-----------|--|--------------|-----------|--------------|----------|
| ✓ | Daytime entertainment programme for adults | 7 | ✓ | | |

| AVAILABLE | ACTIVITY | TIMES A WEEK | NO CHARGE | EXTRA CHARGE | COMMENTS |
|-----------|-----------------------------|--------------|-----------|--------------|----------|
| ✓ | Live music or DJ and events | 7 | ✓ | | |

X = several times a week

Children

| AVAILABLE | FACILITIES | TIMES WEEKLY | NO CHARGE | EXTRA CHARGE | COMMENTS |
|-----------|---|--------------|-----------|--------------|----------|
| ✓ | RIU Land kids' club (4-7 & 8-12 yrs) | 6 | ✓ | | |
| ✓ | Children's pool | | ✓ | | |
| ✓ | Children's playground | | ✓ | | |
| ✓ | High chairs (depending on availability) | | ✓ | | |
| ✓ | Cots on request | | ✓ | | |

X = several times a week

HOTEL RIU ATOLL ****
DHAALU ATOLL

All Inclusive 24
by RIU

Info for disabled guests
Adapted rooms

| | |
|---|---|
| Adapted rooms for wheelchair user available | X |
| Room category | - |
| Number of adapted rooms | 0 |
| Size of adapted rooms (sq m) | - |
| Location of adapted rooms (area/floor) | - |

Adapted rooms - Door widths

| | |
|---|---|
| Entrance | - |
| Bedroom (if there is an extra door) | - |
| Living room (if there is an extra door) | - |
| Bathroom | - |
| Balcony/Terrace | - |

Adapted rooms - Bathroom facilities

| | |
|---|---|
| Bathtub | X |
| Shower | X |
| Step free shower or roll in shower (level entry with no raised lip or step) | X |
| Shower seat | X |
| Support/grab rails in shower | X |
| Support/grab rails in bathtub | X |
| Clear wheelchair turning circle (1.50m diameter) in the bathroom | X |
| Support/grab rails near WC | X |
| Enough wheelchair turning room/min. 0.7m transfer space next to the WC | X |
| Washbasin accessible with wheelchair | X |
| Entry height of the shower (from floor) | - |
| Entry height of the bathtub (from floor) | - |
| Height of the basin | - |
| Height of the toilet | - |

General hotel facilities

| | |
|--|---|
| Lift available | X |
| Lift's door width | - |
| Lift's depth | - |
| Possibility to rent a wheelchair or mobility scooter | X |

Accessibility of public areas in the hotel

Not all public areas are accessible for wheelchair user

Accessibility of hotels' swimming pool

| | |
|---|---|
| At least one swimming pool accessible | X |
| Stairs - number of steps | - |
| Stairs with handrail | X |
| Ladder - number of steps | - |
| Ramp available | X |
| Ramp with handrail | X |
| Pool lift available (on request) | X |
| Accessible bathroom near the swimming pool (distance) | - |

Additional facilities in hotel

Location of additional toilets for wheelchair user if available

Hotel location and environment

| | |
|--|---|
| Surrounding areas of the hotel easily accessed by wheelchair users | X |
| Flat | X |
| Hillside | X |
| Paved sidewalks and streets | X |
| Flat landscape | X |
| Slightly rising or descending landscape | X |
| Paved way to the beach promenade | X |
| Paved way to the ocean at the beach | X |
| Wheelchair access to the sea | X |

Facilities of non-adapted rooms

Specifications for [Double standard room](#)

Bathtub X

| | |
|---|---|
| Shower | X |
| Roll in shower/shower accessible for wheelchair | X |
| Shower seat | X |
| Support/grab rails in the shower | X |
| Support/grab rails in the bathtub | X |
| Support/grab rails near WC | X |
| Enough wheelchair turning room/floor space next to the WC | X |
| Washbasin accessible for wheelchair | X |
| Walk in shower (steps or raised lip) | X |
| Step free shower (level entry with no raised lip or step) | X |
| Door widths - Entrance | - |
| Bedroom (if there is an extra door) | - |
| Living room (if there is an extra door) | - |
| Bathroom | - |
| Balcony/Terrace | - |
| Number of standard rooms located on the ground floor | - |

Please contact hotel if more detailed information is needed.



HOTEL RIU ATOLL ****
DHAALU ATOLL

All Inclusive 24
by RIU

| RIU INTERNAL CODES | RIU STANDARD DESCRIPTION | | SURFACE EXCLUDING BALCONY (sq.m) | OCEAN VIEW (SEA VIEW) | BATHROOM WITH SHOWER | DOUBLE WASHBASIN | BATHROOM WITH BATHTUB & SEP. SHOWER | SPECIAL AMENITIES | HAIRDRYER | BATHROBE | TELEPHONE | WIFI | TV (Sat/cable) | CENTRAL AIR CONDITIONING (depending on season) | CEILING FAN | IN-ROOM SAFE | MINIBAR | LIQUOR DISPENSER | ELECTRIC KETTLE | 1 BEDROOM | SITTING AREA | 1 BED - SIZE: 200 x 200 cm | SOFA | SOFA OR SOFA BED | BALCONY/TERRACE | COMMENTS |
|--------------------|---------------------------------|----|----------------------------------|-----------------------|----------------------|------------------|-------------------------------------|-------------------|-----------|----------|-----------|------|----------------|--|-------------|--------------|---------|------------------|-----------------|-----------|--------------|----------------------------|------|------------------|-----------------|--|
| DDME | Beach room | 31 | ✓ | ✓ | ✓ | ✓ | ✓ | ● | ✓ | ✓ | ✓ | ✓ | ✓ | ✓ | ✓ | ✓ | ✓ | ✓ | ✓ | ✓ | ✓ | ✓ | ✓ | ✓ | ✓ | Terrace with direct beach access. 2 beds 125x200 cm or 1 bed 200x200 cm. |
| DDMB | Double room | 31 | ✓ | ✓ | ✓ | ✓ | ✓ | ● | ✓ | ✓ | ✓ | ✓ | ✓ | ✓ | ✓ | ✓ | ✓ | ✓ | ✓ | ✓ | ✓ | ✓ | ✓ | ✓ | ✓ | Balcony. 2 beds 125x200 cm or 1 bed 200x200 cm. |
| SJMB | Overwater junior suite | 37 | ✓ | ✓ | ✓ | ✓ | ✓ | ✓ | ● | ✓ | ✓ | ✓ | ✓ | ✓ | ✓ | ✓ | ✓ | ✓ | ✓ | ✓ | ✓ | ✓ | ✓ | ✓ | ✓ | Terrace with direct access to the sea. 2 beds 125x200 cm or 1 bed 200x200 cm. Parents travelling with children under 18 have to sign a responsibility disclaimer at arrival. |
| SJME | Overwater superior junior suite | 41 | ✓ | ✓ | ✓ | ✓ | ✓ | ✓ | ● | ✓ | ✓ | ✓ | ✓ | ✓ | ✓ | ✓ | ✓ | ✓ | ✓ | ✓ | ✓ | ✓ | ✓ | ✓ | ✓ | Terrace with direct access to the sea. 2 beds 125x200 cm or 1 bed 200x200 cm. Parents travelling with children under 18 have to sign a responsibility disclaimer at arrival. |

TOTAL: 264 ROOMS

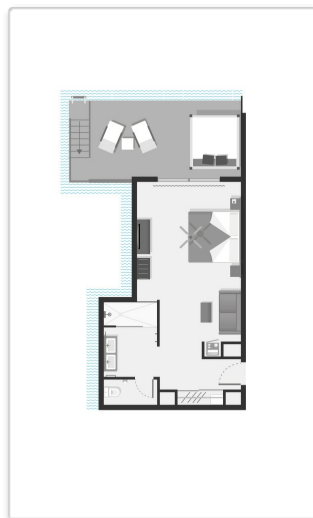
✓ Available, free of charge. ● Available, additional charge.

Plans

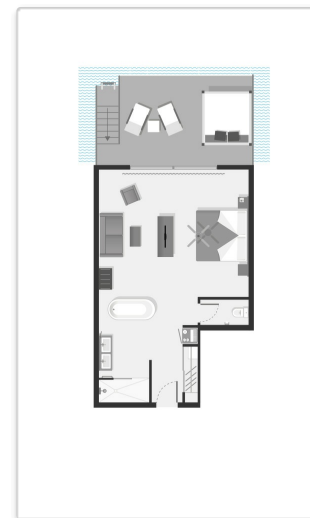
Images for guidance purposes



DDMB_DDME - Double room_Beach room



SJMB - Overwater junior suite



SJME - Overwater superior junior suite

Features

Current : 220V

Remarks

Toilet with hygienic shower.